

PRESS



PRESS RELEASE FOR IMMEDIATE RELEASE

September 25, 2013

Maury L. Carter and Associates, Inc. Investors Make \$1.6 Million Land Acquisition

Orlando, Florida – Daryl M. Carter, Trustee of Carter-St. Lucie Indrio Land Trust recently purchased approximately 53 acres on the south side of Indrio Road at Kings Highway in Ft. Pierce, St. Lucie, County, Florida. The 53 +/- acre parcel was acquired from Capstone Res Dev, LLC for \$1,300,000 cash.

Another Carter-led affiliate, the Chester C. Fosgate Company purchased an adjoining 2+/- acre tract from John V. Langel and Patrick J. Langel for \$300,000 cash.

Aggregate purchase price of the 55+/- acre assemblage was \$1,600,000 cash.

Nikolaus Schroth with NAI Southcoast represented the seller on the 53 acres and David Tubeck with Tubeck Realty, Inc. represented the seller on the 2 acres.

Daryl M. Carter, President of Maury L. Carter and Associates, Inc., Jeff Douglas and Hal Dodt represented the buyer.

Carter said the acquisitions are consistent with the firm's history of buying well-located land for investment with interim agricultural uses. Carter's investors have been very active lately, having acquired approximately 6 tracts of land in Florida in the last 12 months.

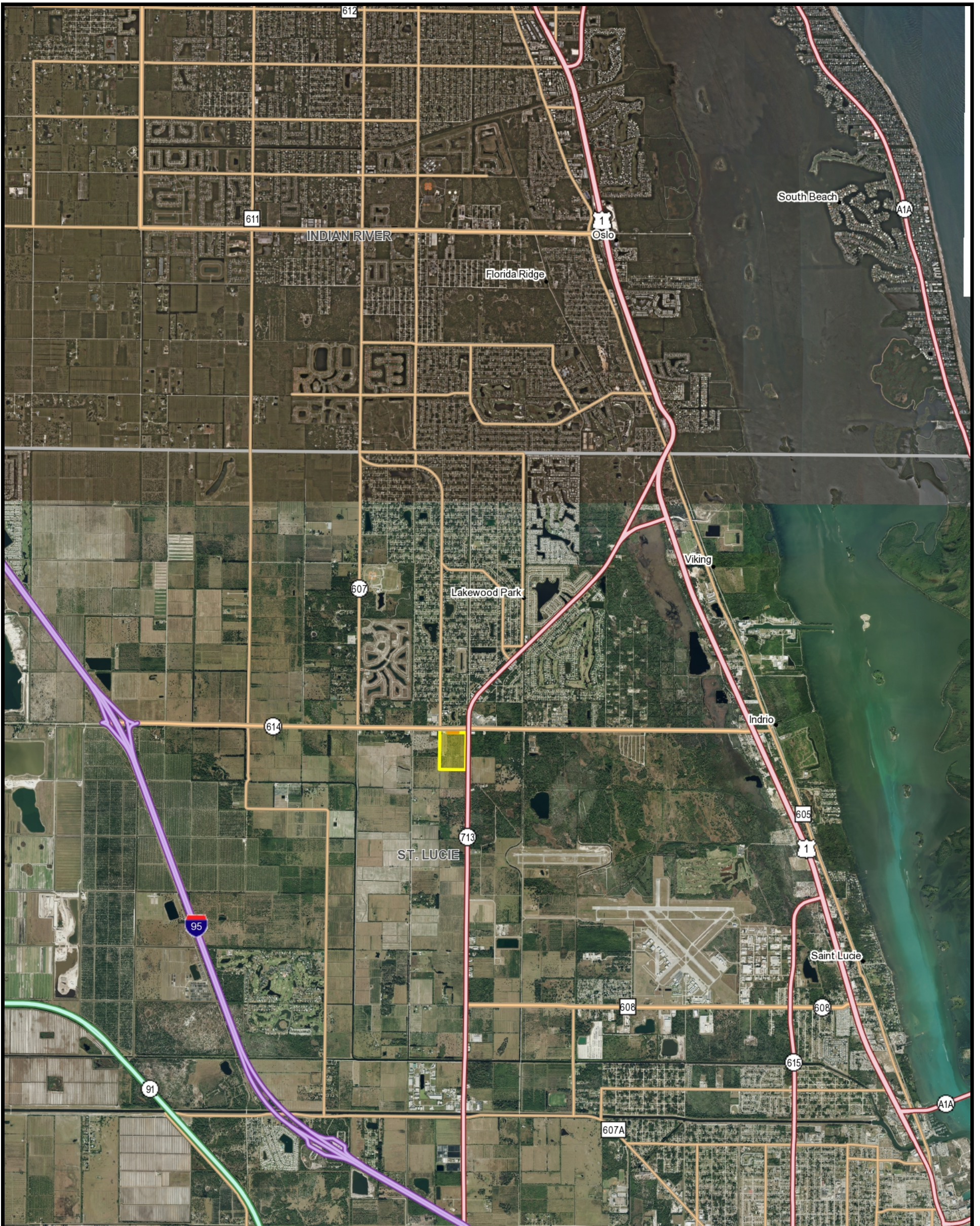
Maury L. Carter & Associates, Inc. is an Orlando-based full service commercial real estate firm proficient in commercial real estate investments, asset management, brokerage, and development. The firm's officers combine more than 75 years experience in real estate investments and brokerage.







Contact Information:

Maury L. Carter & Associates, Inc.
3333 S. Orange Avenue, Suite 200, Orlando, FL 32806
407-422-3144

www.maurycarter.com

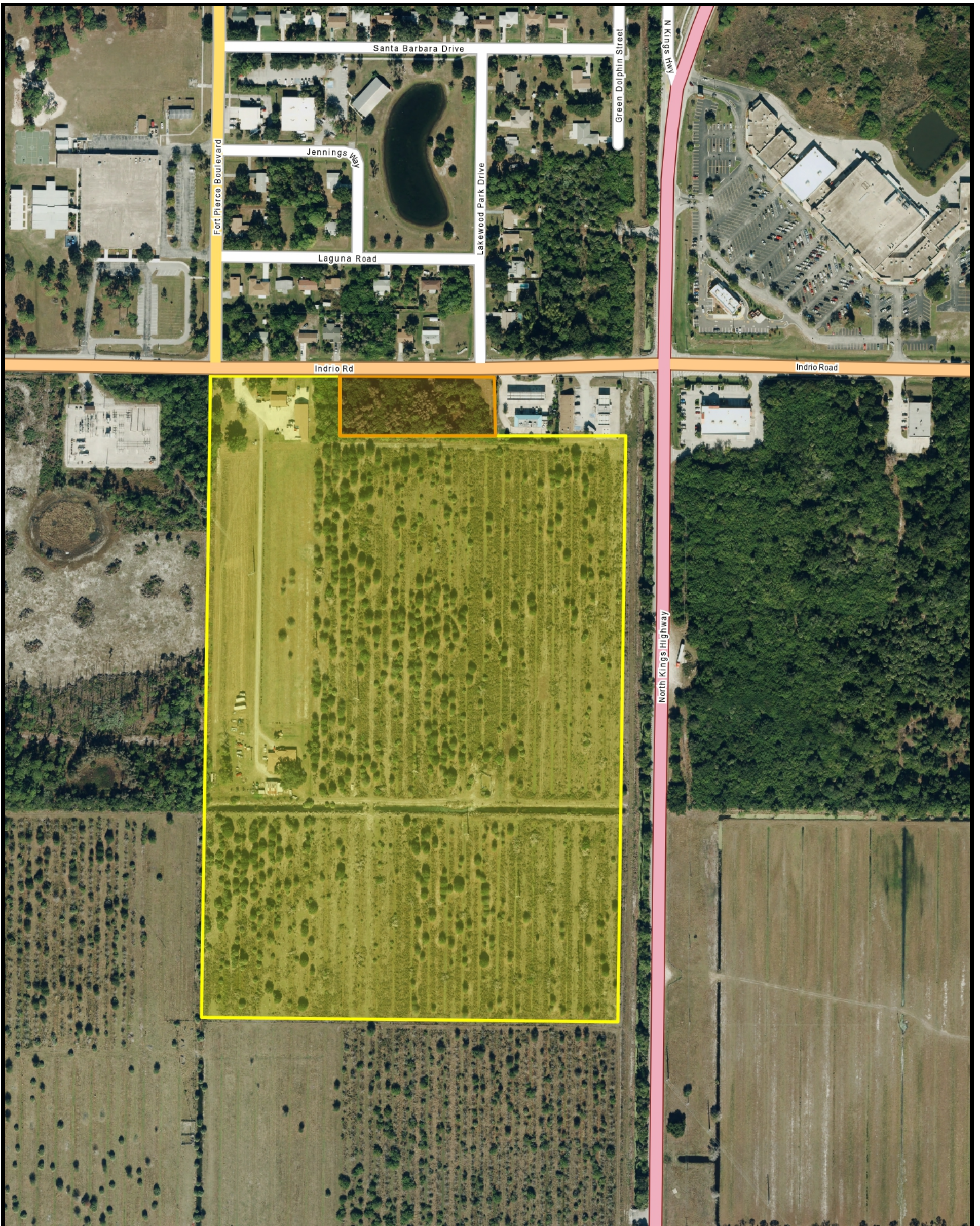
###










-  County Boundaries
-  Polygons Drawing
-  Lines Drawing
-  Labels Drawing
-  Points Drawing
-  Selected Parcels



Copyright 2013 MapWise, Inc. All rights reserved.
 www.mapwise.com. This map is informational only. No representation
 is made or warranty given as to its content. User assumes all risk of
 use. MapWise and its suppliers assume no responsibility for any
 losses resulting from such use.



-  County Boundaries
-  Polygons Drawing
-  Lines Drawing
-  Labels Drawing
-  Points Drawing
-  Selected Parcels
-  Parcel Outlines



0 230 460 690 ft

Copyright 2013 MapWise, Inc. All rights reserved.
 www.mapwise.com. This map is informational only. No representation is made or warranty given as to its content. User assumes all risk of use. MapWise and its suppliers assume no responsibility for any losses resulting from such use.