

# SEBRING RESIDENTIAL ACREAGE

30.03 ± gross acres (6.41 net acres) • Approved for 12 Single Family Lots  
Highlands County, FL

LAND FOR SALE



## LOCATION

The property is located on the southeast quadrant of Valerie Boulevard and Memorial Drive in Sebring, Highlands County, Florida.

## SIZE

30.03 gross acres, 6.41 net acres  
Approved for 12 single family lots (Holness Subdivision)

## PRICE

\$300,000

## ZONING

The property is zoned R1; Single Family Residential

## ROAD FRONTAGE/ACCESS

The site has 950' ± of frontage on the south side of Valerie Boulevard, 1,800' of frontage on the east side of Memorial Drive, 1,750' on the north side of Northwest Lake Sebring Drive and 950' on the west side of Manatee Drive.

## DESCRIPTION

This is an opportunity for a small residential builder to construct twelve single family homes in the heart of Sebring, Highlands County. The property has been approved as the Holness subdivision on 6.41 acres along the northern boundary of the site.

Offering subject to errors, omission, prior sale or withdrawal without notice.



— Commercial Real Estate Investments | Management | Brokerage | Development | Land

Maury L. Carter & Associates, Inc.  
407-422-3144 | [www.maurycarter.com](http://www.maurycarter.com)





# SEBRING RESIDENTIAL ACREAGE

30.03 ± gross acres (6.41 net acres) • Approved for 12 Single Family Lots  
Highlands County, FL



PROPERTY MAP

— Commercial Real Estate Investments | Management | Brokerage | Development | Land

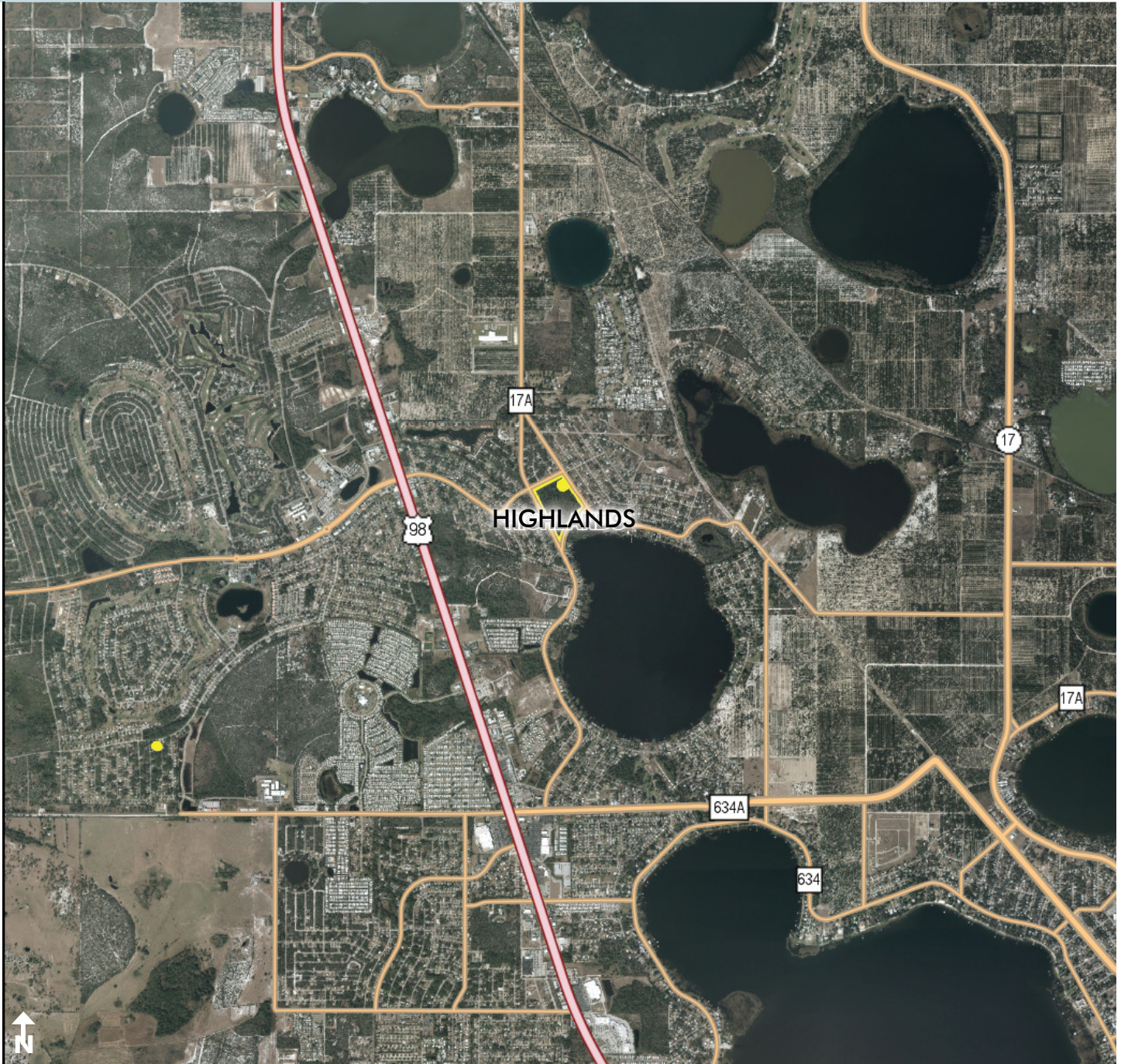
Maury L. Carter & Associates, Inc.  
407-422-3144 | [www.maurycarter.com](http://www.maurycarter.com)





# SEBRING RESIDENTIAL ACREAGE

30.03 ± gross acres (6.41 net acres) • Approved for 12 Single Family Lots  
Highlands County, FL



REGIONAL MAP

— Commercial Real Estate Investments | Management | Brokerage | Development | Land

Maury L. Carter & Associates, Inc.  
407-422-3144 | [www.maurycarter.com](http://www.maurycarter.com)

