

BAY LAKE ROAD

4.6± acres

Lake County, FL



LOCATION

Located at 14001 Bay Lake Road, the Property is on the east and west sides of Bay Lake Road and the north side of Carter Jones Road in Groveland, Florida.

SIZE

4.6± acres

PRICE

\$50,000 or \$10,870/acre

ZONING

Agricultural (1 du / 5 acres).

ROAD FRONTAGE

335± feet on the east side of Bay Lake Rd (CR 565)

365± feet on the west side of Bay Lake Rd (CR 565)

560± feet on the north side of Carter Jones Rd

UTILITIES

Well and Septic.

DESCRIPTION

Zoned Agricultural. Property is on east and west sides of Bay Lake Road and north side of Carter Jones Road in Groveland, FL.

Offering subject to errors, omission, prior sale or withdrawal without notice.

LAND FOR SALE

— Commercial Real Estate Investments | Management | Brokerage | Development | Land

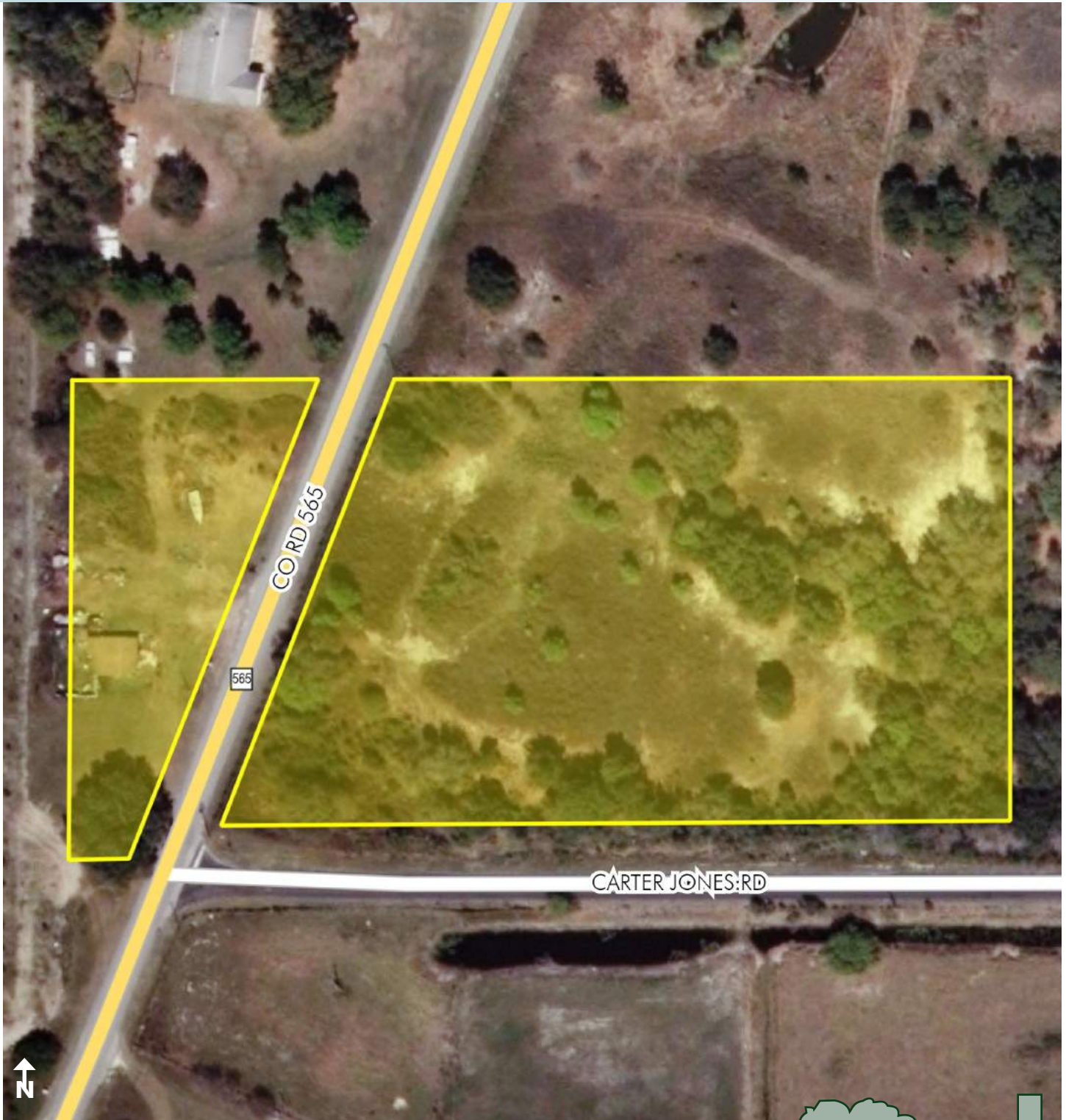
Maury L. Carter & Associates, Inc.
407-422-3144 | www.maurycarter.com



BAY LAKE ROAD

4.6± acres

Lake County, FL



PROPERTY MAP

— Commercial Real Estate Investments | Management | Brokerage | Development | Land

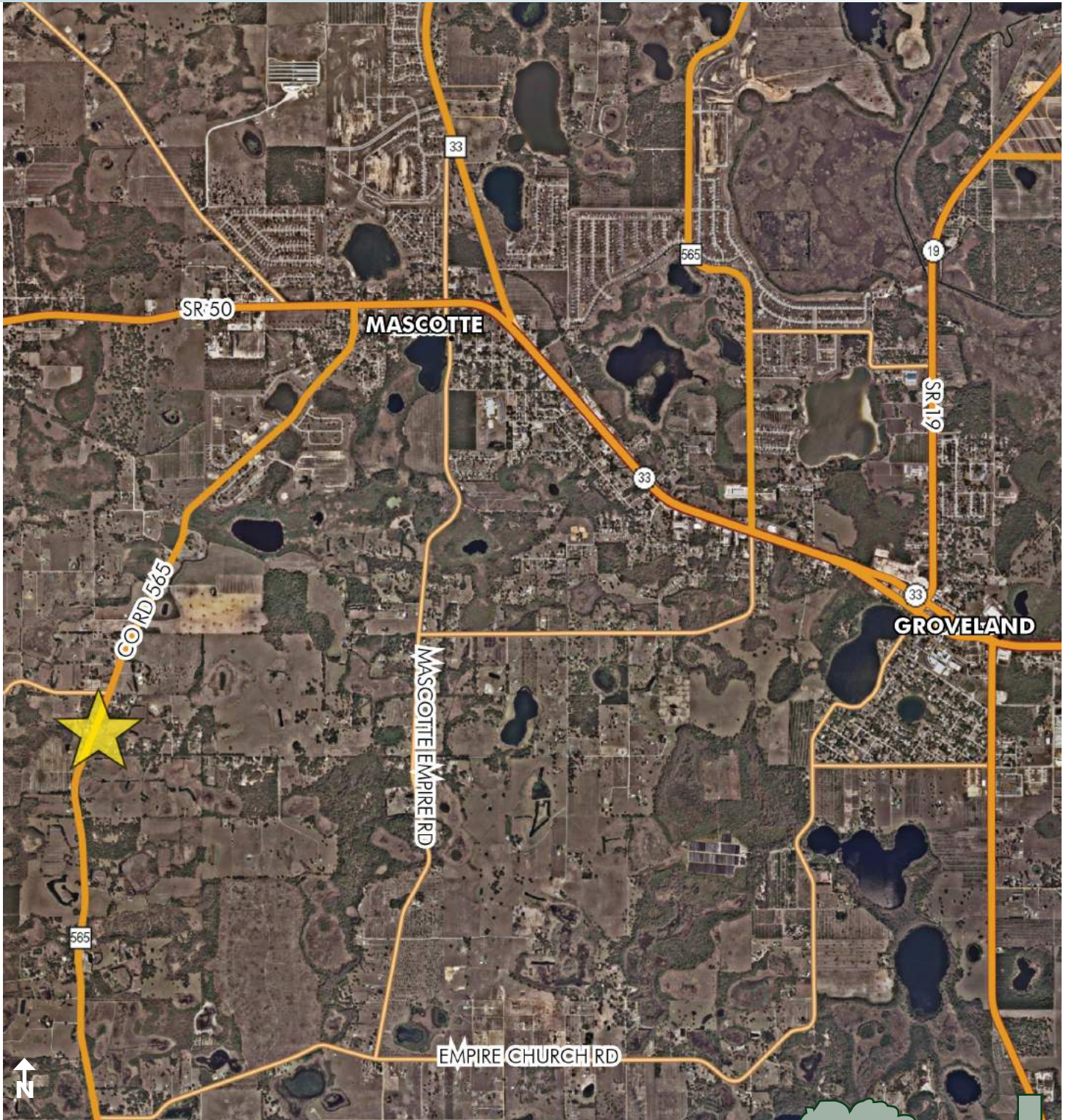
Maury L. Carter & Associates, Inc.
407-422-3144 | www.maurycarter.com



BAY LAKE ROAD

4.6± acres

Lake County, FL



REGIONAL MAP

— Commercial Real Estate Investments | Management | Brokerage | Development | Land

Maury L. Carter & Associates, Inc.
407-422-3144 | www.maurycarter.com

