

# ST. CLOUD REDEVELOPMENT SITE

1.72± acres

Osceola County, FL



## LOCATION

Located on the south side of US Highway 192/SR 441 between Ohio Avenue and Indiana Avenue within the City Limits of St. Cloud, Florida.

## SIZE

1.72± acres

## PRICE

\$1,150,000

## ZONING

HB Highway Business District. FLU is Commercial.

## ROAD FRONTAGE

300+/- feet on the south side of US Hwy 192/SR441  
250 +/- feet on the east side of Ohio Avenue  
300+/- feet on the north side of 14th Street  
250 +/- on the west side of Indiana Avenue  
ADT= 26,000 to 30,000.

## UTILITIES

City of Saint Cloud.

## DESCRIPTION

Redevelopment site within the heart of Downtown St. Cloud consisting of eight individual tax parcels. The property is located within the City of St. Cloud Community Redevelopment Area, therefore, if redeveloped property is eligible for incentives including impact fee discounts, credits, and façade grants.

Offering subject to errors, omission, prior sale or withdrawal without notice.

LAND FOR SALE

— Commercial Real Estate Investments | Management | Brokerage | Development | Land

Maury L. Carter & Associates, Inc.  
407-422-3144 | [www.maurycarter.com](http://www.maurycarter.com)



# ST. CLOUD REDEVELOPMENT SITE

1.72± acres

Osceola County, FL



PROPERTY MAP

— Commercial Real Estate Investments | Management | Brokerage | Development | Land

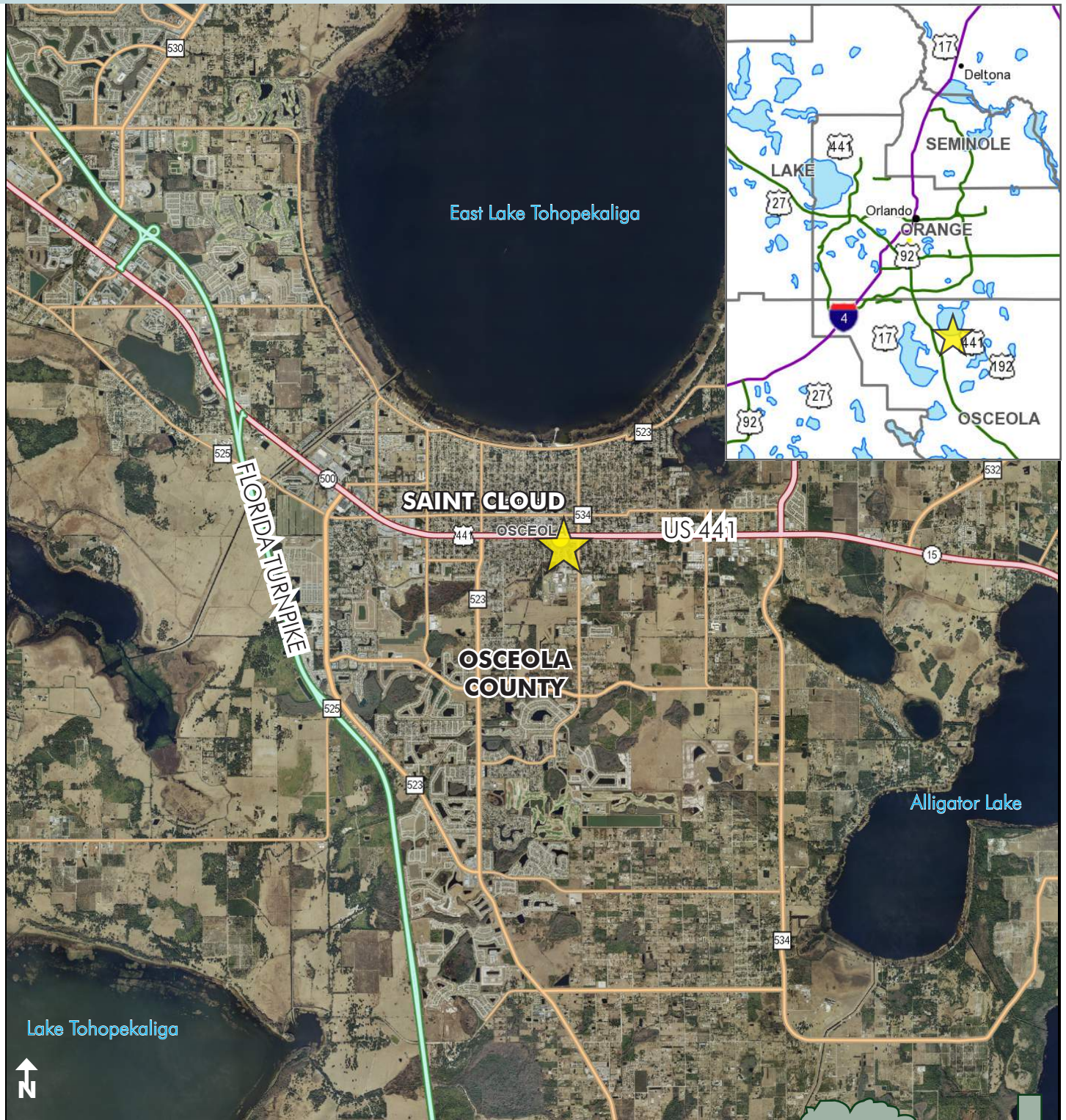
Maury L. Carter & Associates, Inc.  
407-422-3144 | [www.maurycarter.com](http://www.maurycarter.com)



# ST. CLOUD REDEVELOPMENT SITE

1.72± acres

Osceola County, FL



LOCATION MAP

— Commercial Real Estate Investments | Management | Brokerage | Development | Land

Maury L. Carter & Associates, Inc.  
407-422-3144 | [www.maurycarter.com](http://www.maurycarter.com)

