

# HICKORY TREE ROAD

13.67± acres

St. Cloud, Osceola County, FL



## LOCATION/ DESCRIPTION

6100 Hickory Tree Road St. Cloud, located in north Osceola County. Former orange grove land, just west of Harmony, FL. Structures include a large 2,500 ± sf barn and mobile home. Property contains a medium sized pond and access to two canals within close proximity to Pearl Lake.

## SIZE

13.67± acres

## PRICE

\$325,000

## ZONING

AC. FLU is MX, Mixed Use.

## ROAD FRONTAGE

718' on Hickory Tree Road.

## UTILITIES

Well and Septic.

## PARCEL ID

26-26-31-4950-0001-0681

Offering subject to errors, omission, prior sale or withdrawal without notice.

LAND FOR SALE

— Commercial Real Estate Investments | Management | Brokerage | Development | Land

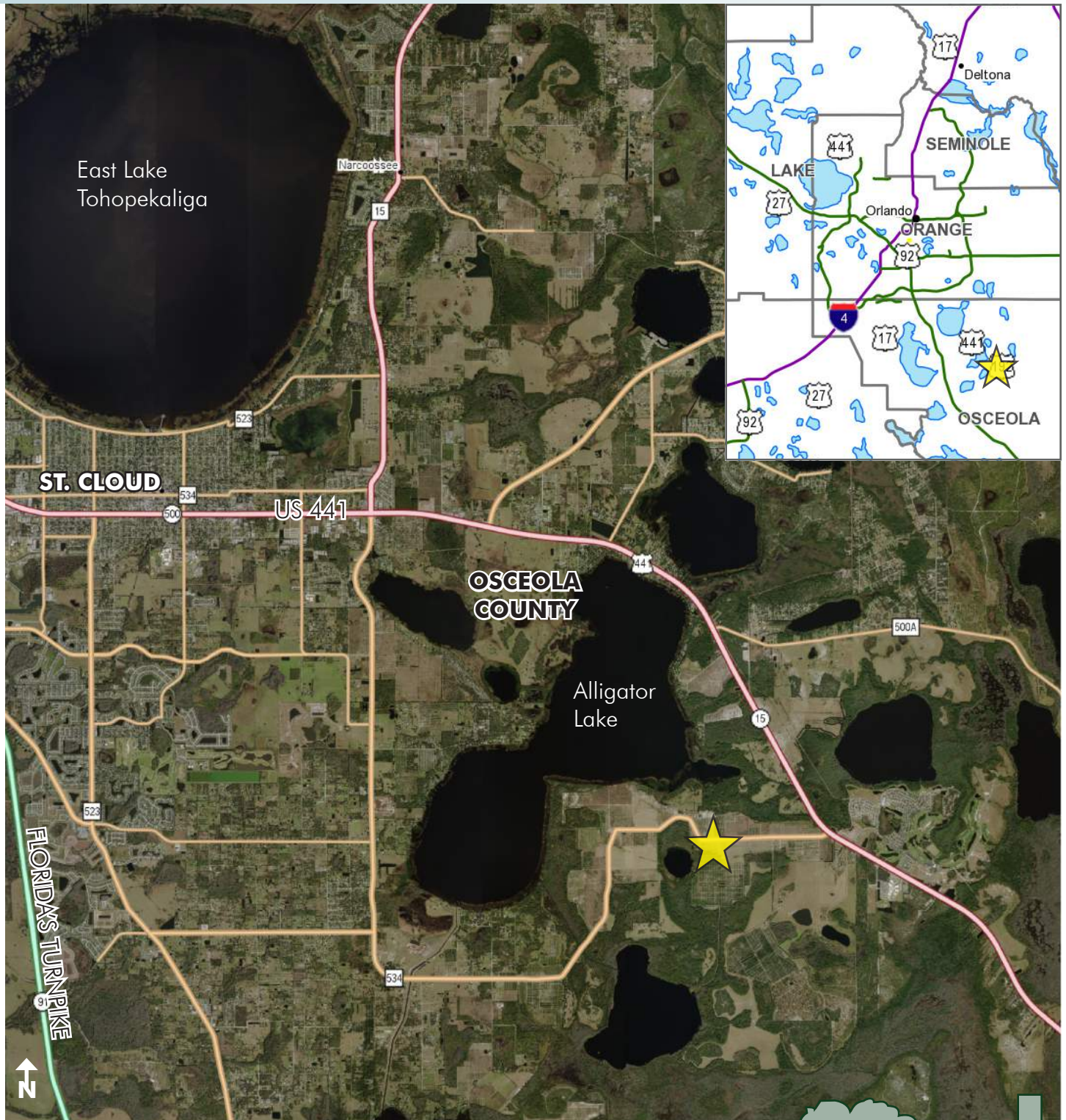
Maury L. Carter & Associates, Inc.  
407-422-3144 | [www.maurycarter.com](http://www.maurycarter.com)



# HICKORY TREE ROAD

13.67 ± acres

St. Cloud, Osceola County, FL



LOCATION MAP

— Commercial Real Estate Investments | Management | Brokerage | Development | Land

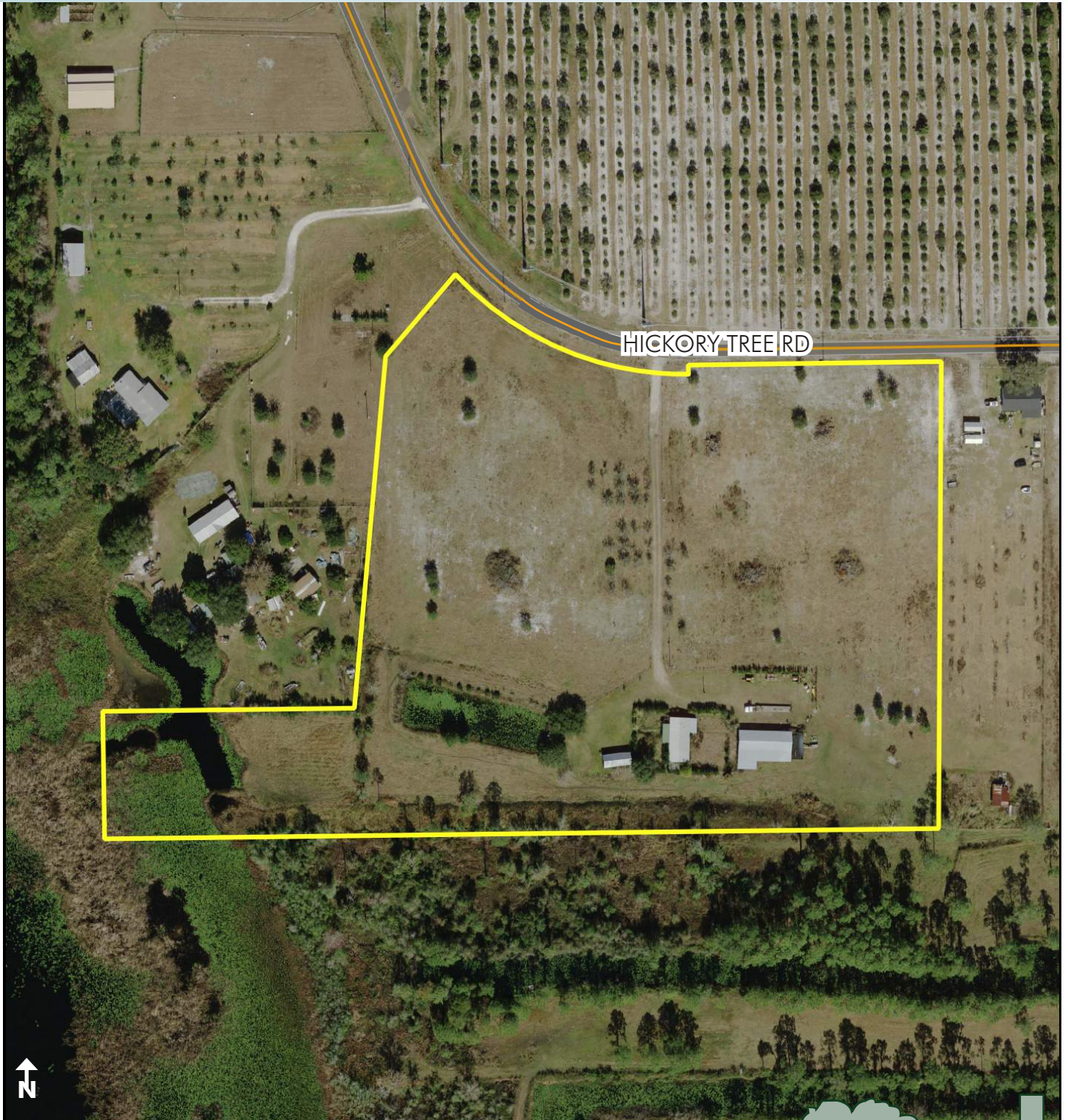
Maury L. Carter & Associates, Inc.  
407-422-3144 | [www.maurycarter.com](http://www.maurycarter.com)



# HICKORY TREE ROAD

13.67± acres

St. Cloud, Osceola County, FL



PROPERTY MAP

— Commercial Real Estate Investments | Management | Brokerage | Development | Land

Maury L. Carter & Associates, Inc.  
407-422-3144 | [www.maurycarter.com](http://www.maurycarter.com)

