

# COMMERCIAL INFILL SITE

BUSY INTERSECTION OF PLANT ST & STORY RD

2.59± acres • Winter Garden, FL



## PARCEL IDs

22-22-27-6124-16-000,  
22-22-27-6124-00-001s

## LOCATION

Located on the SE corner of Plant Street and Story Road within the city limits of Winter Garden, Florida.

## SIZE

2.59± total acres (2.24ac future dev/.35ac retention)

## PRICE

\$450,000

## LAND USE

The site is zoned PCD by the City of Winter Garden. Permits up to 15,000 SF of commercial uses consistent with C-4 Neighborhood Commercial Zoning District, plus the following uses: retail stores and shops of a neighborhood convenience (convenience food stores, dry cleaning and laundry facilities), bakeries, restaurants, drug and sundries, barbershop and beauty shops, nail salons and spas. Also permitted are professional office uses, studios and personal service establishments of a similar nature. Additional development standards can be found within the Oaks at Brandy Lake PD documents on file with the City of Winter Garden.

## ROAD FRONTAGE

350'± on S side of Story Road  
350'± on W side of Plant Street

## UTILITIES

City of Winter Garden

## DESCRIPTION

Located in a fast-growing area of Central Florida. The site is high and dry with retention area in place and excellent physical, legal and economic characteristics.

Offering subject to errors, omission, prior sale or withdrawal without notice.

LAND FOR SALE

— Commercial Real Estate Investments | Management | Brokerage | Development | Land

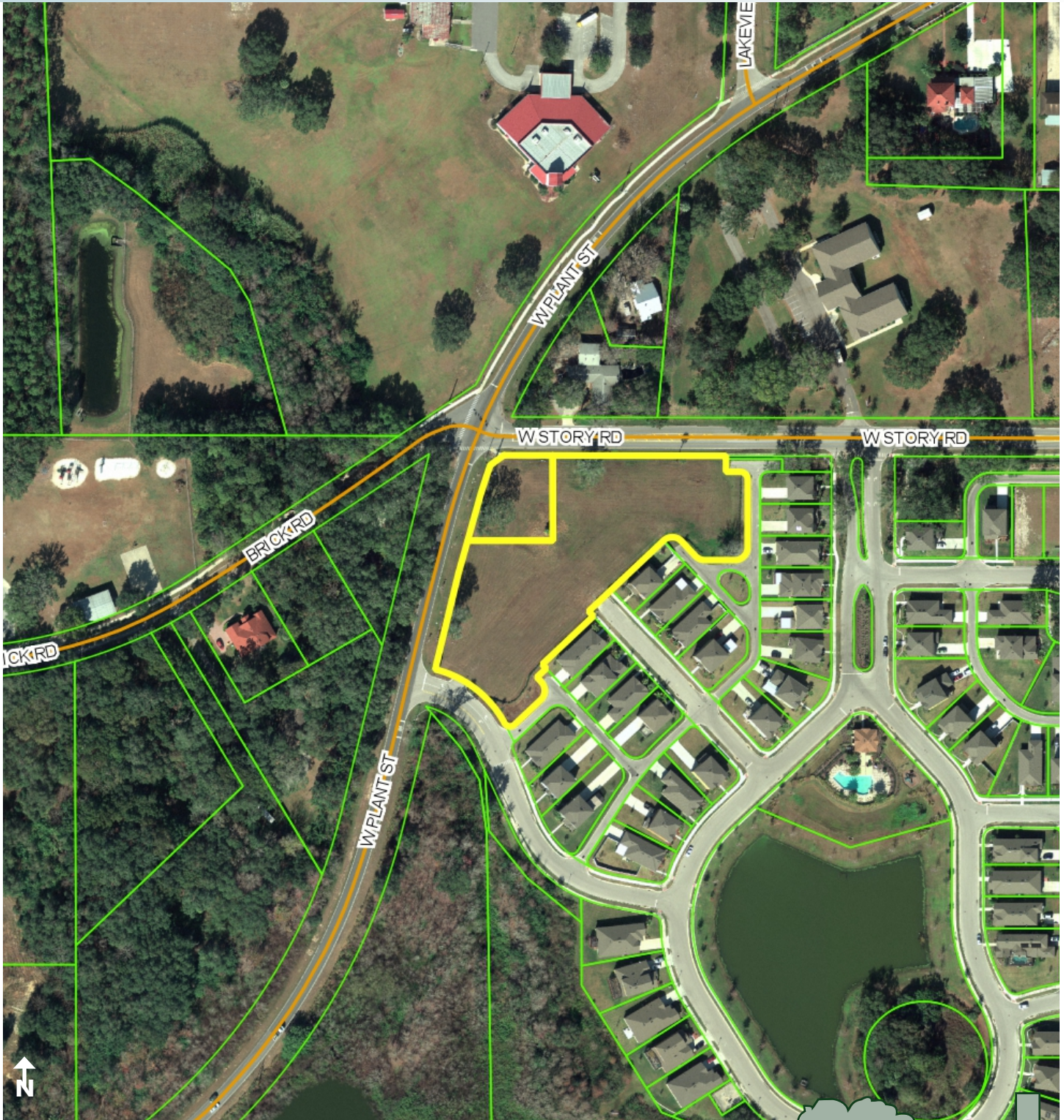
Maury L. Carter & Associates, Inc.  
407-422-3144 | [www.maurycarter.com](http://www.maurycarter.com)



# COMMERCIAL INFILL SITE

BUSY INTERSECTION OF PLANT ST & STORY RD

2.59± acres • Winter Garden, FL



PROPERTY MAP

— Commercial Real Estate Investments | Management | Brokerage | Development | Land

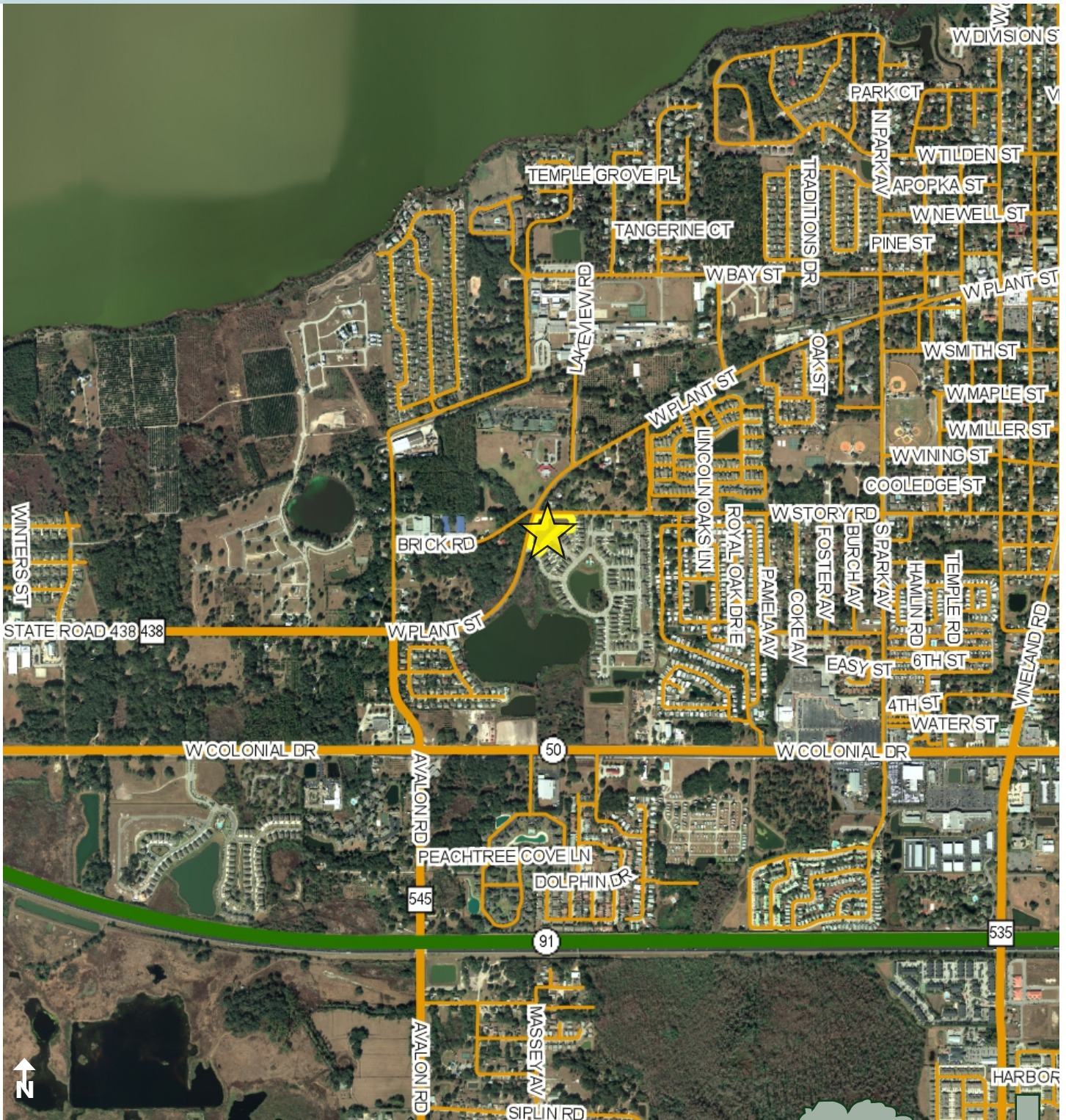
Maury L. Carter & Associates, Inc.  
407-422-3144 | [www.maurycarter.com](http://www.maurycarter.com)



# COMMERCIAL INFILL SITE

BUSY INTERSECTION OF PLANT ST & STORY RD

2.59± acres • Winter Garden, FL



REGIONAL MAP

— Commercial Real Estate Investments | Management | Brokerage | Development | Land

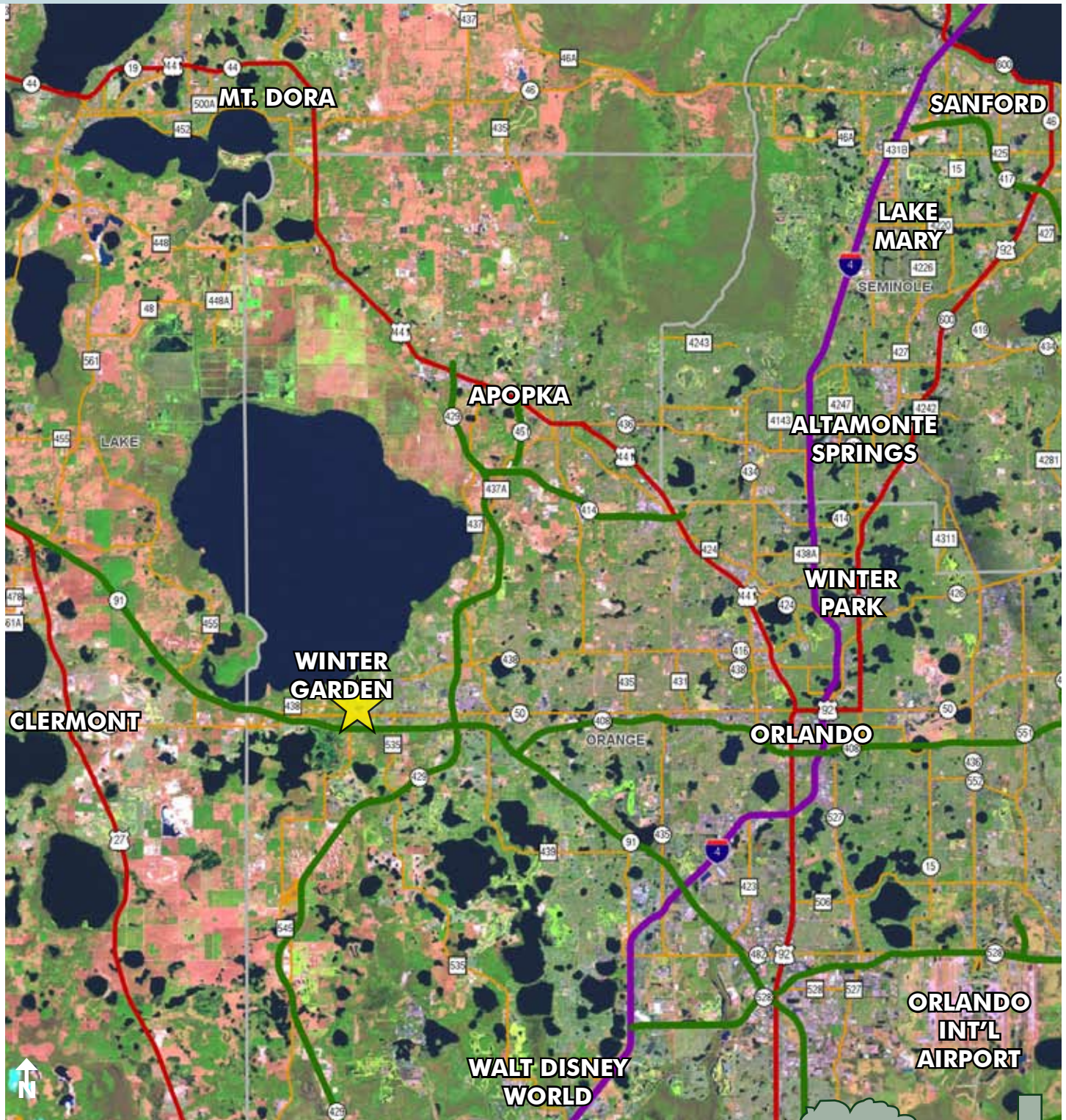
Maury L. Carter & Associates, Inc.  
407-422-3144 | [www.maurycarter.com](http://www.maurycarter.com)



# COMMERCIAL INFILL SITE

BUSY INTERSECTION OF PLANT ST & STORY RD

2.59± acres • Winter Garden, FL



LOCATION MAP

— Commercial Real Estate Investments | Management | Brokerage | Development | Land

Maury L. Carter & Associates, Inc.

407-422-3144 | [www.maurycarter.com](http://www.maurycarter.com)

