

OSCEOLA COUNTY COMMERCIAL

REUNION/CHAMPIONSGATE AREA

6.04± acres • Osceola County, FL



LOCATION

Located on the SW corner of side of Sand Hill Road and CR 545. A portion of the Indian Ridge single family subdivision.

SIZE

6.04± total acres
(level at road grade, ready for development)

PRICE

\$1,580,000

LAND USE

Zoned CG Commercial which allows a wide variety of commercial uses by the Osceola County.

ROAD FRONTAGE

660'± on S side of Sand Hill Road
475'± on W side of CR 545

UTILITIES

Available from Osceola County

DESCRIPTION

Major single family developments are underway, including the Encore Club (a large single family development that permits vacation rentals). Site is high and dry with excellent physical, legal and economic characteristics.

Offering subject to errors, omission, prior sale or withdrawal without notice.

LAND FOR SALE

— Commercial Real Estate Investments | Management | Brokerage | Development | Land

Maury L. Carter & Associates, Inc.
407-422-3144 | www.maurycarter.com



OSCEOLA COUNTY COMMERCIAL

REUNION/CHAMPIONSGATE AREA

6.04± acres • Osceola County, FL



PROPERTY MAP

— Commercial Real Estate Investments | Management | Brokerage | Development | Land

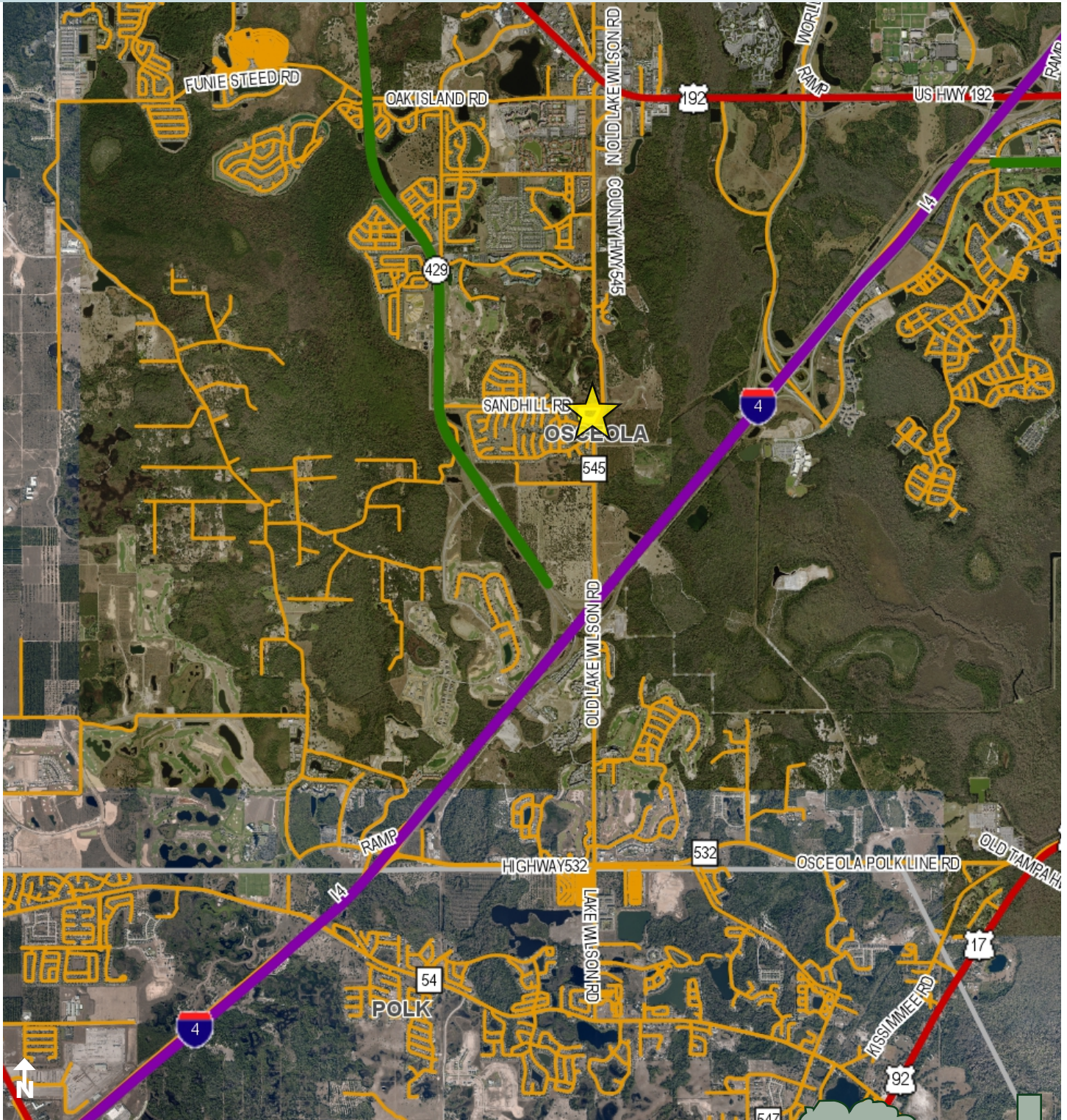
Maury L. Carter & Associates, Inc.
407-422-3144 | www.maurycarter.com



OSCEOLA COUNTY COMMERCIAL

REUNION/CHAMPIONSGATE AREA

6.04± acres • Osceola County, FL



REGIONAL MAP

— Commercial Real Estate Investments | Management | Brokerage | Development | Land

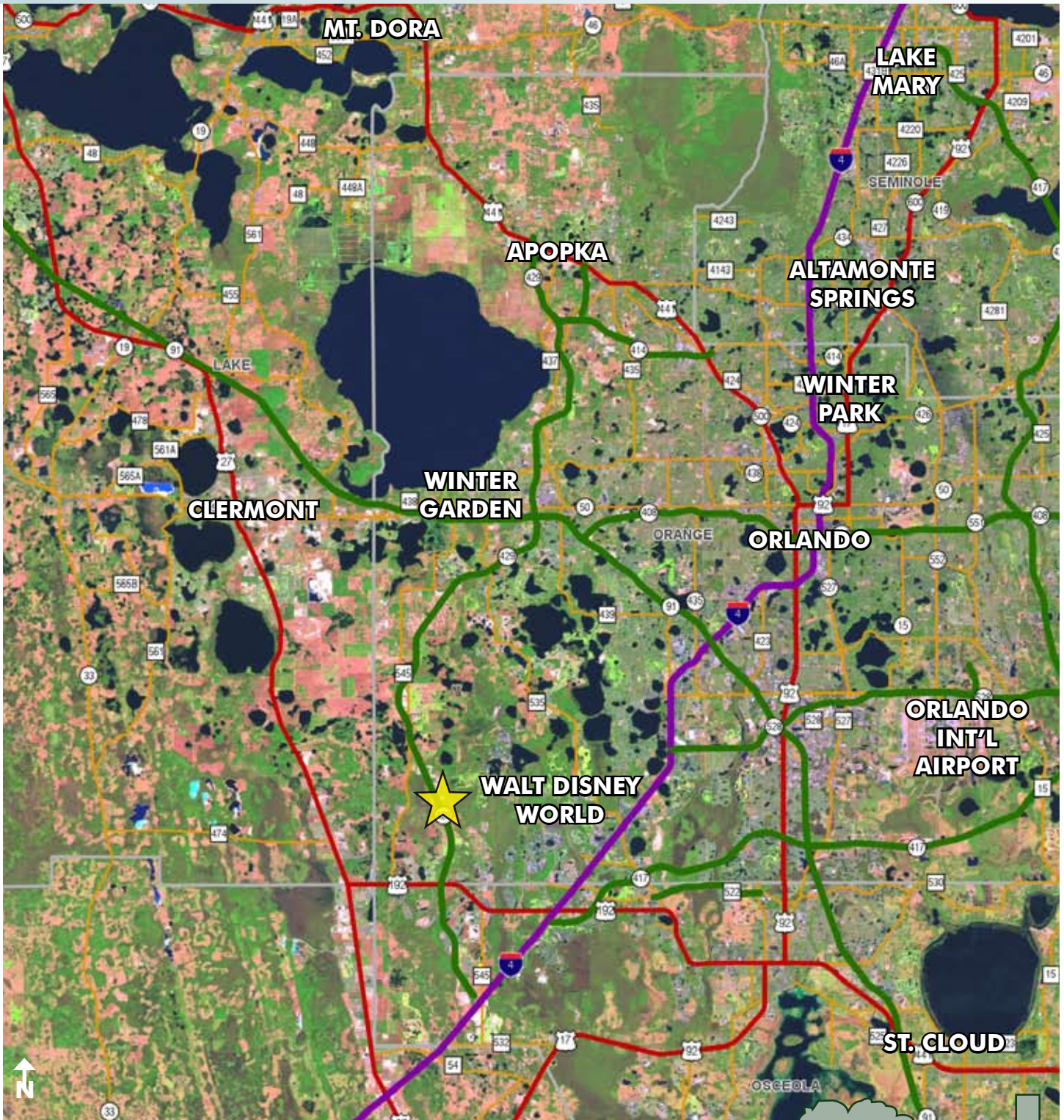
Maury L. Carter & Associates, Inc.
407-422-3144 | www.maurycarter.com



OSCEOLA COUNTY COMMERCIAL

REUNION/CHAMPIONSGATE AREA

6.04± acres • Osceola County, FL



LOCATION MAP

— Commercial Real Estate Investments | Management | Brokerage | Development | Land

Maury L. Carter & Associates, Inc.
407-422-3144 | www.maurycarter.com

