

OSCEOLA COUNTY COMMERCIAL US 192/FL TURNPIKE INTERCHANGE

2.67± acres • Osceola County, FL



LOCATION

Centrally located between Kissimmee and St. Cloud. 2 miles to FARMC (UCF/Sensor); 2 miles to Kissimmee and St. Cloud. Across from proposed retail center to be built at site of Osceola Flea and Farmers Market.

SIZE

2.67± acres

PRICE

\$345,000

ZONING

Commercial/Office

ROAD FRONTAGE

900± feet on Hwy 192
180± feet on Simmons Blvd
180± feet on Florence Drive
420± feet on Patricia Street

UTILITIES

Water and Sewer available at site.

DESCRIPTION

This property is centrally located between Kissimmee and St. Cloud with 900± feet frontage on US 192. Ideal for office complex use; small retail use is possible. In high growth area with traffic counts at 40,000 ADT.

Offering subject to errors, omission, prior sale or withdrawal without notice.

LAND FOR SALE

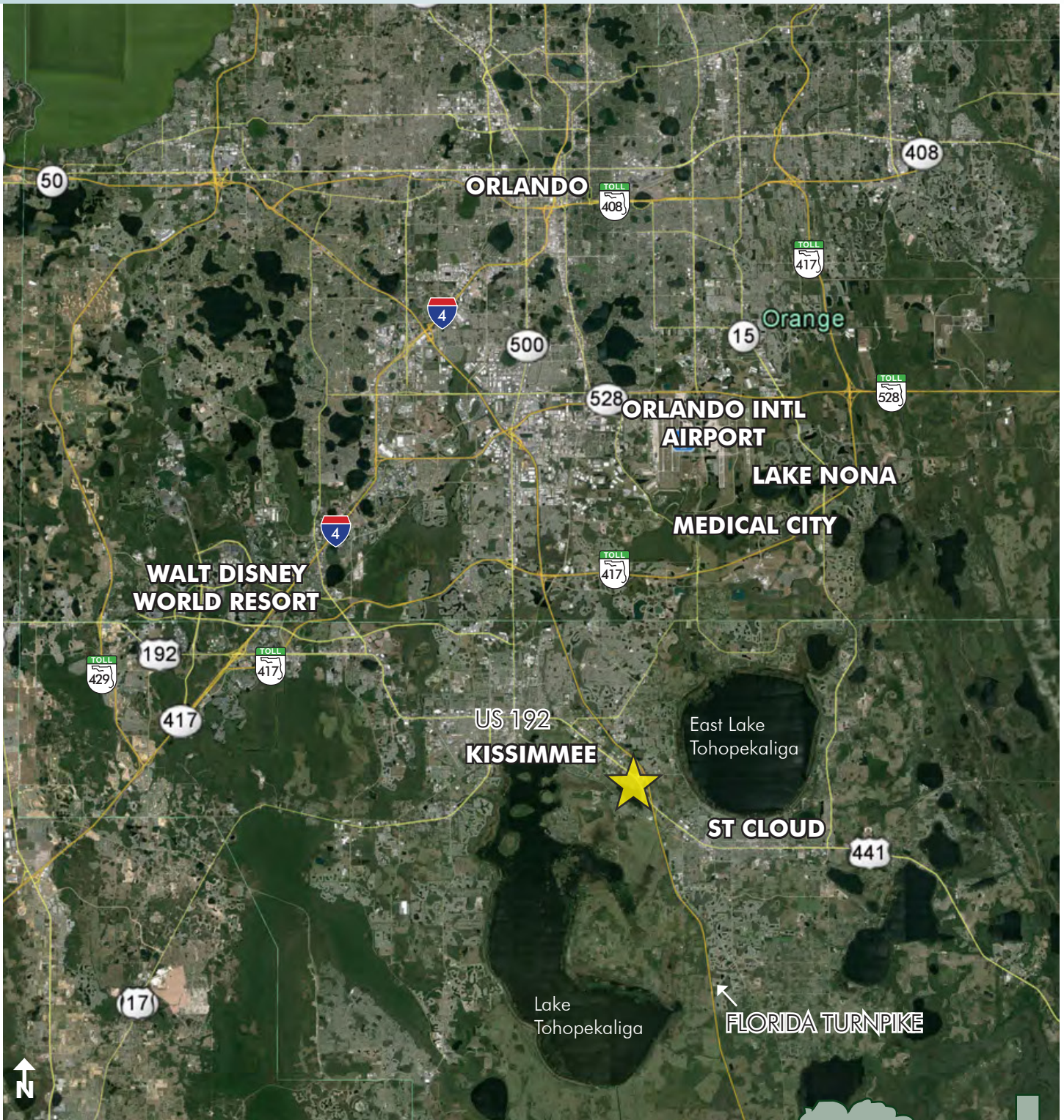
— Commercial Real Estate Investments | Management | Brokerage | Development | Land

Maury L. Carter & Associates, Inc.
407-422-3144 | www.maurycarter.com



OSCEOLA COUNTY COMMERCIAL US 192/FL TURNPIKE INTERCHANGE

2.67± acres • Osceola County, FL



LOCATION MAP

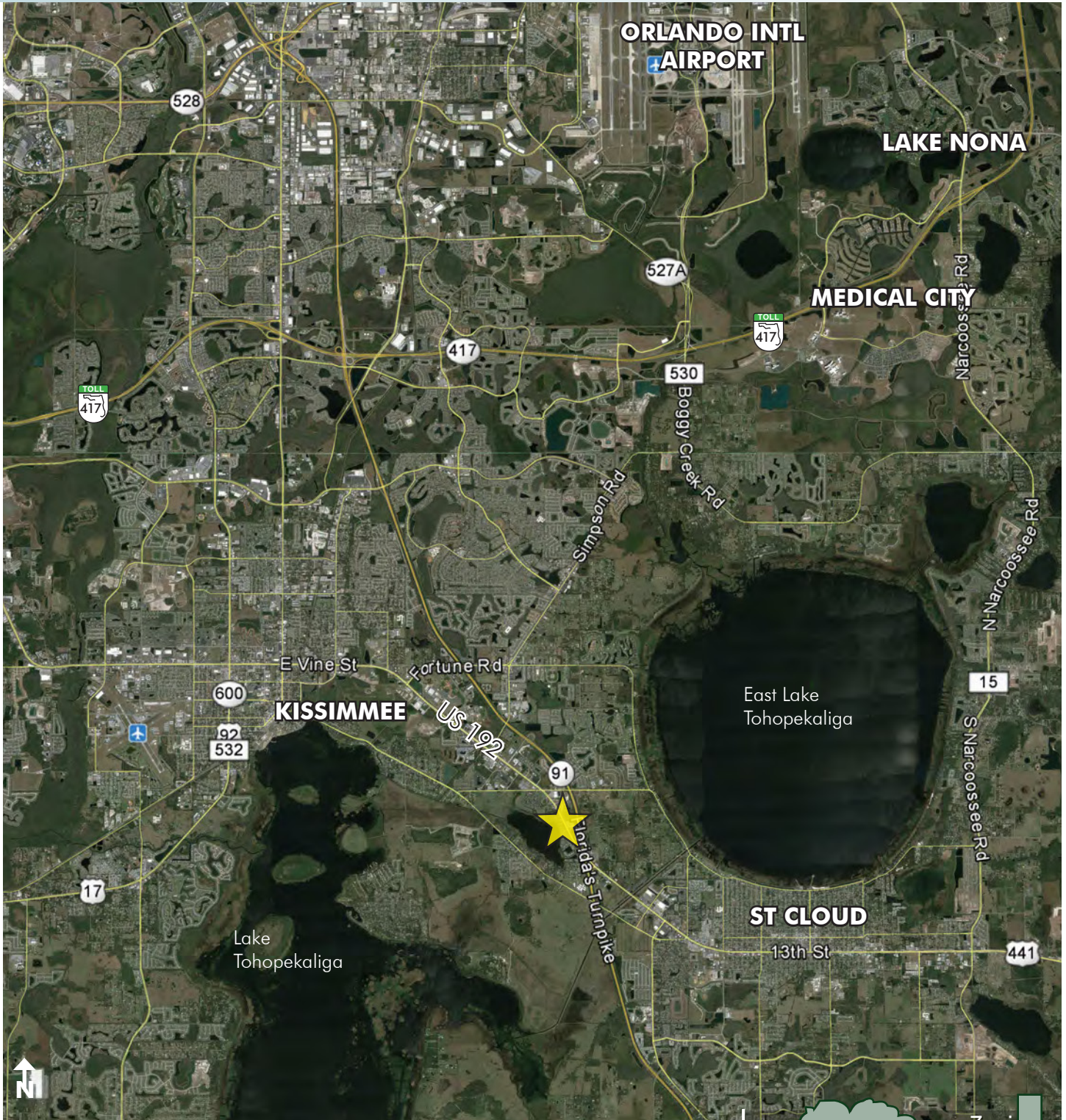
— Commercial Real Estate Investments | Management | Brokerage | Development | Land

Maury L. Carter & Associates, Inc.
407-422-3144 | www.maurycarter.com



OSCEOLA COUNTY COMMERCIAL US 192/FL TURNPIKE INTERCHANGE

2.67± acres • Osceola County, FL



REGIONAL MAP

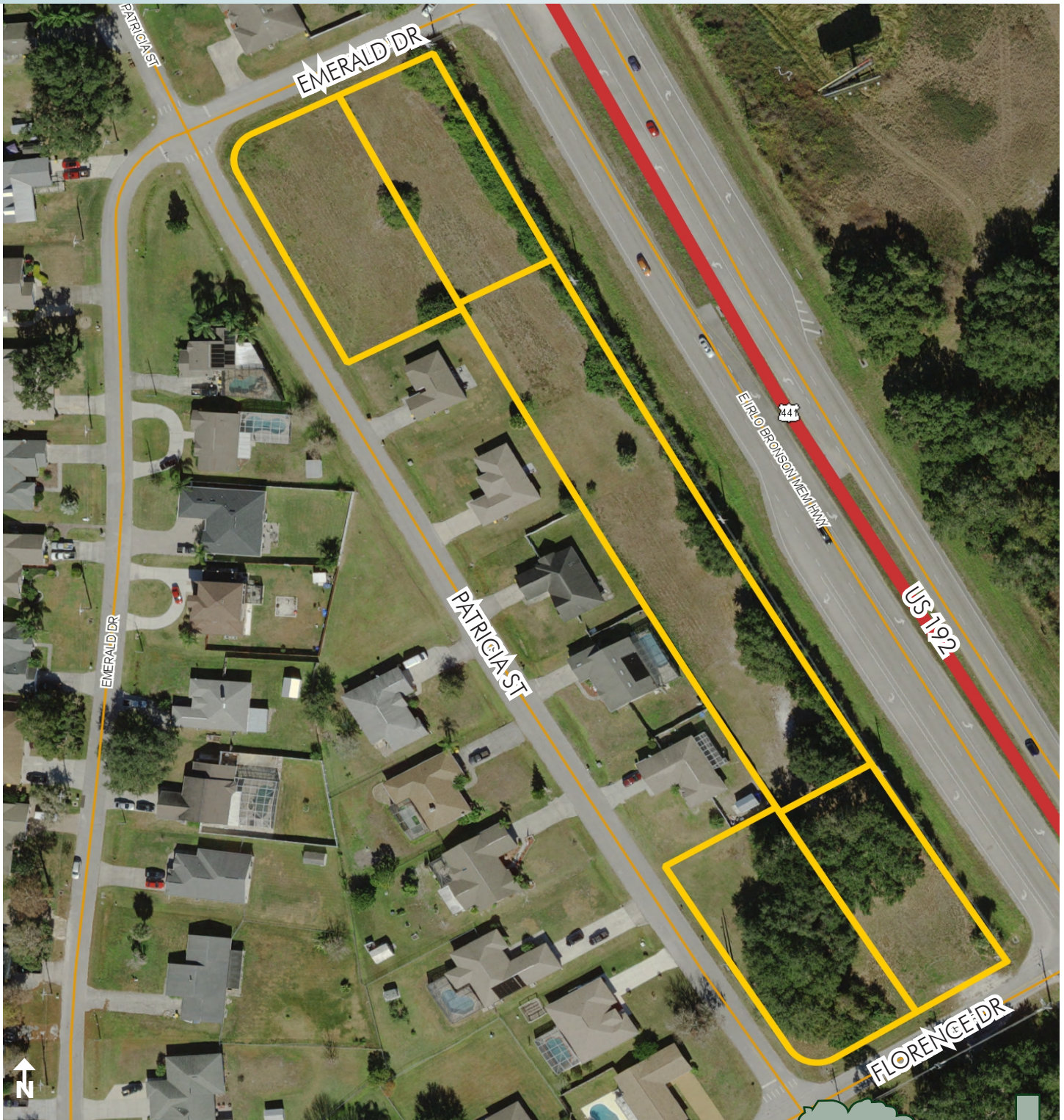
— Commercial Real Estate Investments | Management | Brokerage | Development | Land

Maury L. Carter & Associates, Inc.
407-422-3144 | www.maurycarter.com



OSCEOLA COUNTY COMMERCIAL US 192/FL TURNPIKE INTERCHANGE

2.67± acres • Osceola County, FL



PROPERTY MAP

— Commercial Real Estate Investments | Management | Brokerage | Development | Land

Maury L. Carter & Associates, Inc.
407-422-3144 | www.maurycarter.com

