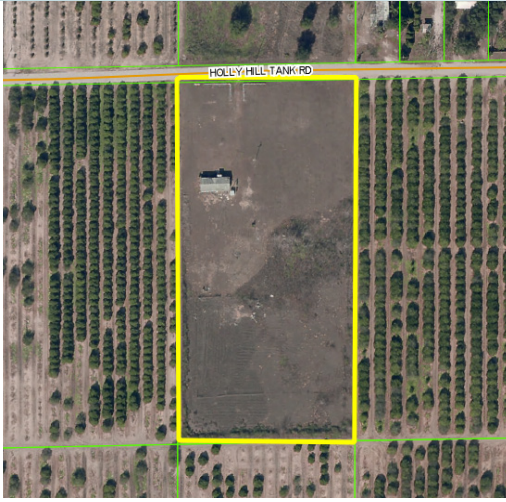


# RESIDENTIAL/COMMERCIAL LAND

4.95± acres

Polk County, FL



## LOCATION

2527 Holly Hill Tank Road, Davenport, FL. 33837  
Just off of Hwy 27 and close to I-4.

## SIZE

4.95± acres

## PRICE

\$475,000 - Owner Financing Available

## ZONING/FLU

RL - 1

## ROAD FRONTAGE

330' on Holly Hill Tank Road  
1300' from Hwy 27

## UTILITIES

Well and septic on site.

## DESCRIPTION

4.95± acres with mobile home. Nice residential tract close to Hwy 27 and I-4. Potential to rezone for storage units or warehouse.

Offering subject to errors, omission, prior sale or withdrawal without notice.

LAND FOR SALE

— Commercial Real Estate Investments | Management | Brokerage | Development | Land

Maury L. Carter & Associates, Inc.  
407-422-3144 | [www.maurycarter.com](http://www.maurycarter.com)



# RESIDENTIAL/COMMERCIAL LAND

4.95± acres

Polk County, FL



PROPERTY MAP

— Commercial Real Estate Investments | Management | Brokerage | Development | Land

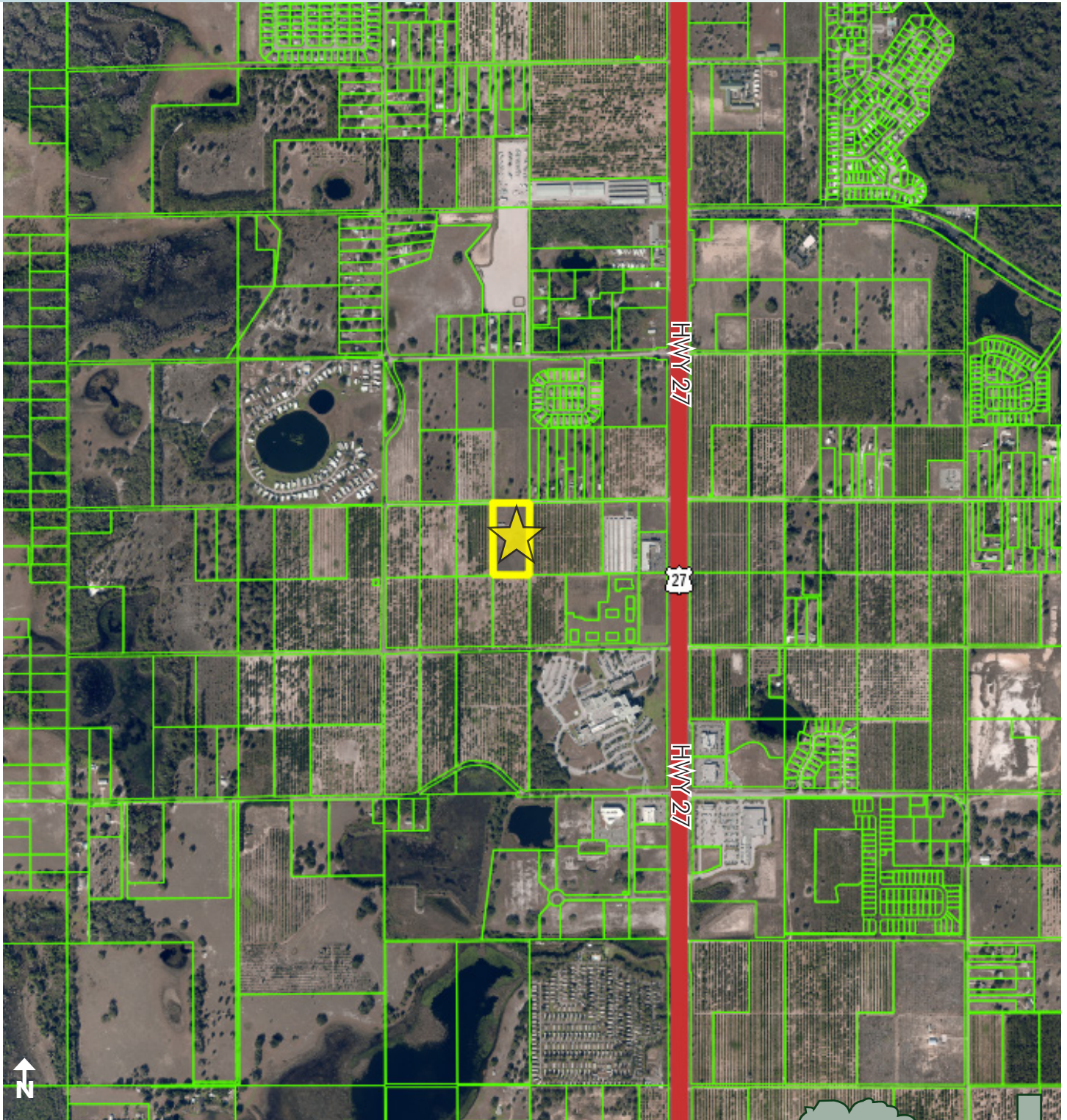
Maury L. Carter & Associates, Inc.  
407-422-3144 | [www.maurycarter.com](http://www.maurycarter.com)



# RESIDENTIAL/COMMERCIAL LAND

4.95± acres

Polk County, FL



REGIONAL MAP

— Commercial Real Estate Investments | Management | Brokerage | Development | Land

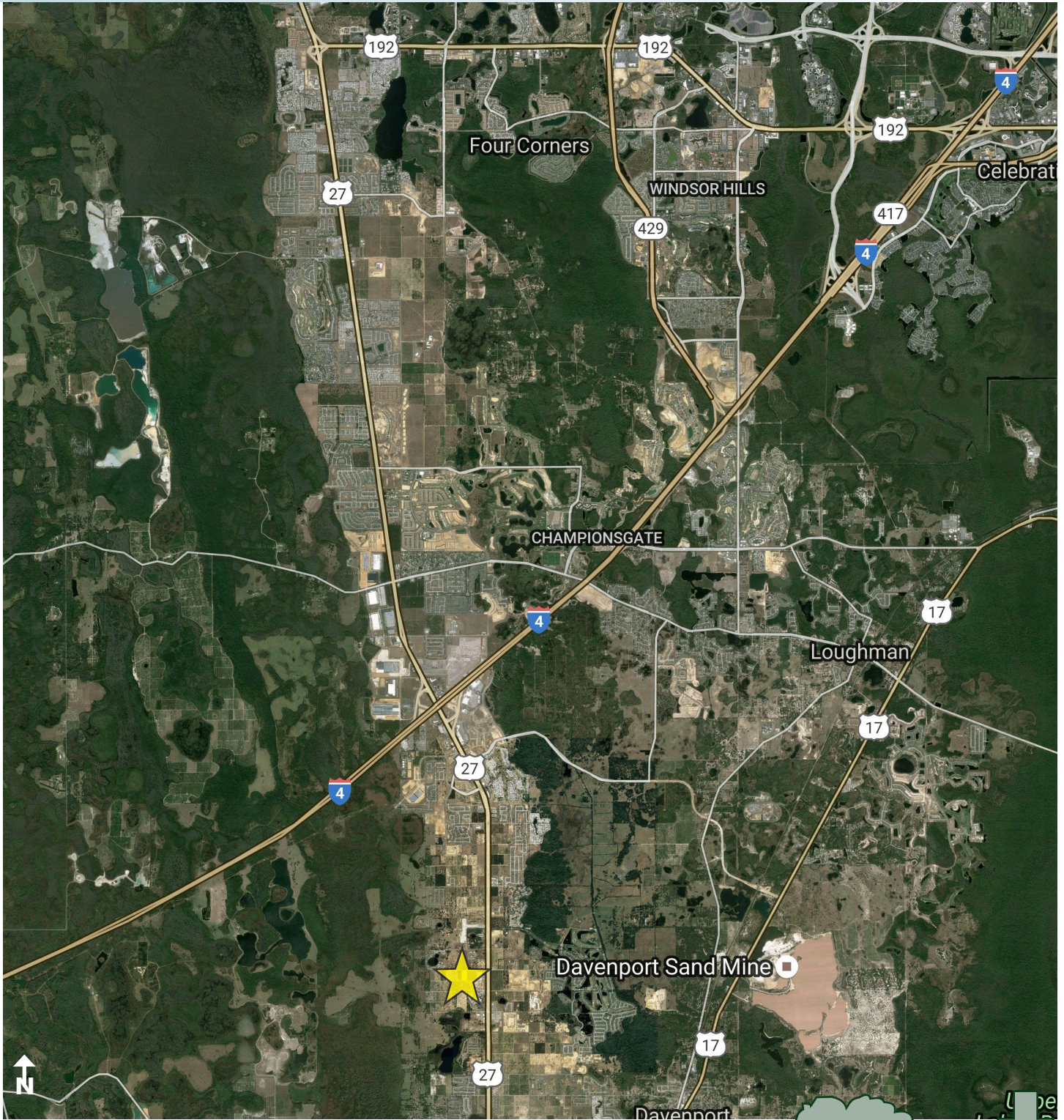
Maury L. Carter & Associates, Inc.  
407-422-3144 | [www.maurycarter.com](http://www.maurycarter.com)



# RESIDENTIAL/COMMERCIAL LAND

4.95± acres

Polk County, FL



LOCATION MAP

— Commercial Real Estate Investments | Management | Brokerage | Development | Land

Maury L. Carter & Associates, Inc.  
407-422-3144 | [www.maurycarter.com](http://www.maurycarter.com)

