

# RESIDENTIAL LAND ON GILLIAM ROAD

21.7± acres

Orange County, FL

**PRICE  
REDUCED**

LAND FOR SALE



## LOCATION

Located along the north side of Gilliam Road, just east of Clarcona Road near the new SR 414/Keene Road interchange in Orange County. Address is 7831 and 7881 Gilliam Road, Orlando, FL 32818

## SIZE

21.7± acres

## PRICE

~~WAS \$695,000~~ NOW \$595,000

## ZONING/FUTURE LAND USE

A-1 / (1 unit/5 acres)

## ROAD FRONTAGE

350'± along the N side of Gilliam Road

## UTILITIES

Wells and septs available onsite. Municipal water located along Gilliam Road, 450' to the west.

## STRUCTURES

- 3BR/3BA home - 2,104sf (built 1991)
- 2BR/1BA home - 696sf (built 1960)
- 3BR/1BA home - 1,380sf (built 1956)

## DESCRIPTION

Outdoor enthusiasts, hobbyist, ranchers, farmers, equestrian and estate buyers - TAKE NOTICE!  
This property offers country living adjacent to city amenities!

Enjoy exclusion, peacefulness and quiet surroundings on your private acreage, including three well-maintained homes under oak hammocks and pine stands. Move-in ready!

Surveys available upon request. MLS #05463067  
Co-listed with AXEL Real Estate, Inc.

## DRIVE TIMES

- 20 minutes to downtown Orlando
- 30 minutes to Orlando Int'l Airport
- 15 minutes to Apopka

Offering subject to errors, omission, prior sale or withdrawal without notice.

— Commercial Real Estate Investments | Management | Brokerage | Development | Land

Maury L. Carter & Associates, Inc.  
407-422-3144 | [www.maurycarter.com](http://www.maurycarter.com)



# RESIDENTIAL LAND ON GILLIAM ROAD

21.7± acres

Orange County, FL

**PRICE  
REDUCED**

LAND FOR SALE



*Interior photos available upon request.*

— Commercial Real Estate Investments | Management | Brokerage | Development | Land —

Maury L. Carter & Associates, Inc.  
407-422-3144 | [www.maurycarter.com](http://www.maurycarter.com)

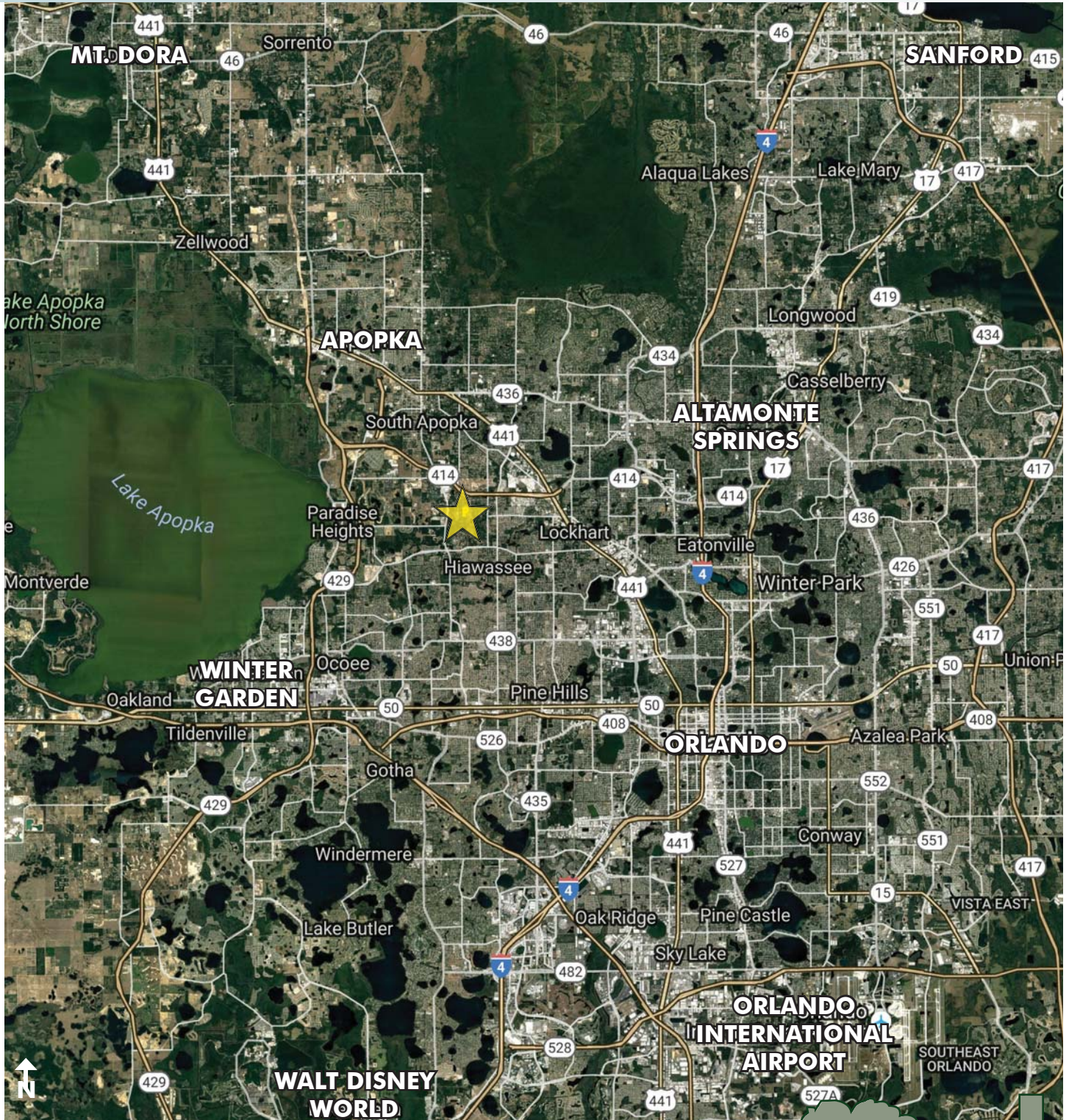


# RESIDENTIAL LAND ON GILLIAM ROAD

21.7± acres

Orange County, FL

**PRICE  
REDUCED**



LOCATION MAP

— Commercial Real Estate Investments | Management | Brokerage | Development | Land

Maury L. Carter & Associates, Inc.  
407-422-3144 | [www.maurycarter.com](http://www.maurycarter.com)

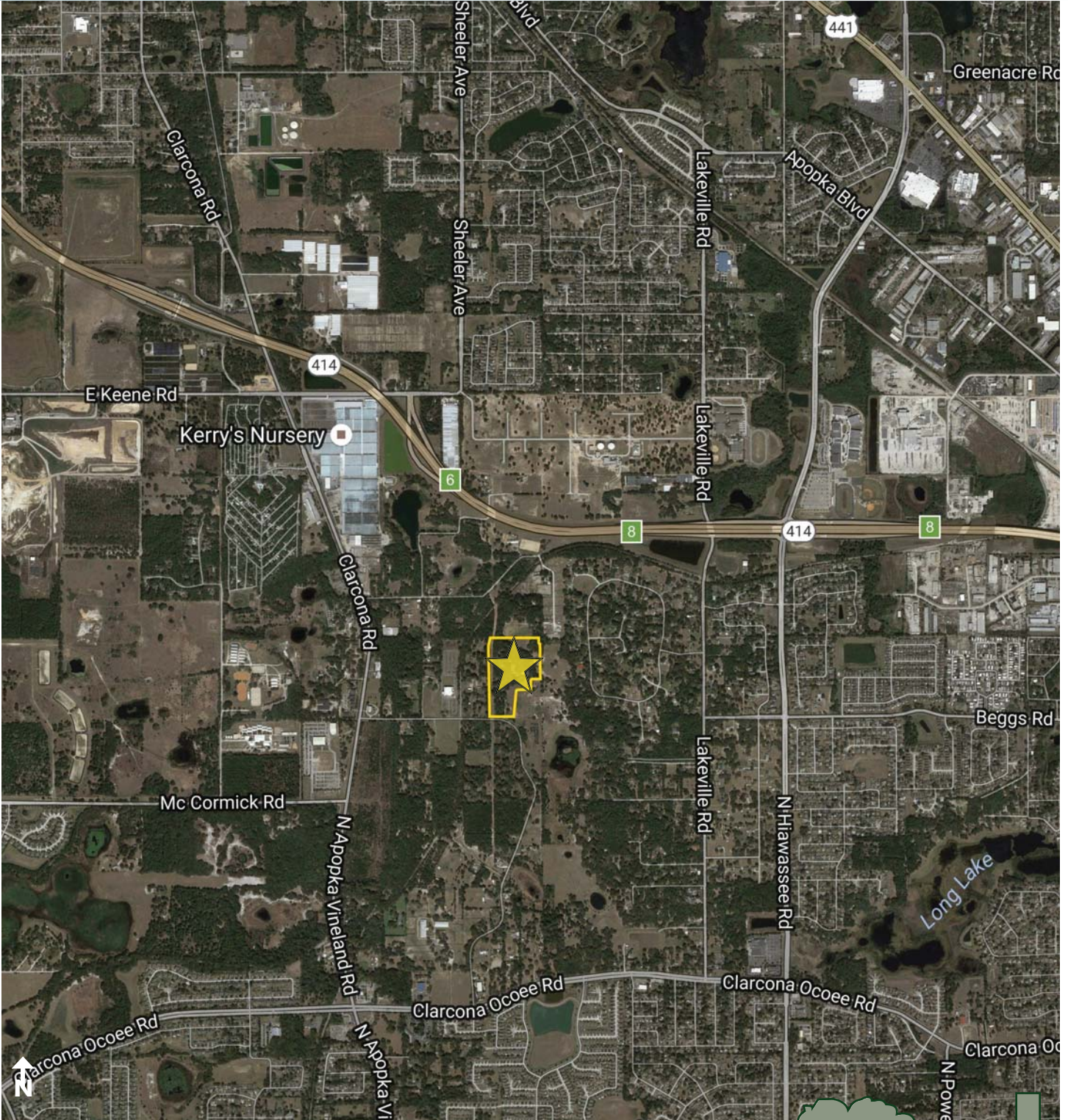


# RESIDENTIAL LAND ON GILLIAM ROAD

21.7± acres

Orange County, FL

**PRICE  
REDUCED**



REGIONAL MAP

— Commercial Real Estate Investments | Management | Brokerage | Development | Land

Maury L. Carter & Associates, Inc.  
407-422-3144 | [www.maurycarter.com](http://www.maurycarter.com)



# RESIDENTIAL LAND ON GILLIAM ROAD

21.7± acres

Orange County, FL

**PRICE  
REDUCED**



PROPERTY MAP

— Commercial Real Estate Investments | Management | Brokerage | Development | Land

Maury L. Carter & Associates, Inc.  
407-422-3144 | [www.maurycarter.com](http://www.maurycarter.com)

