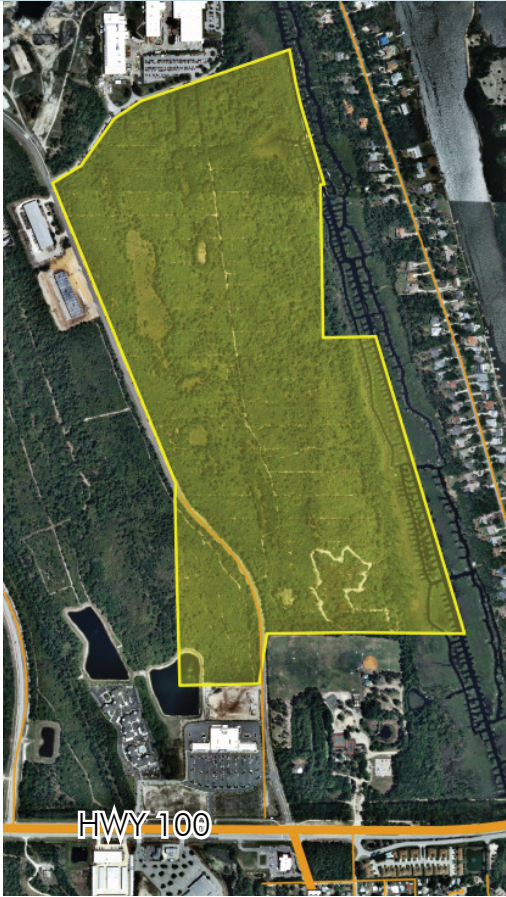


FLAGLER BEACH COASTAL RESIDENTIAL

232± acres

Flagler County, FL



LOCATION/DESCRIPTION

Coastal development opportunity within 5 minutes of I-95! Perfectly situated less than 3 minutes from the golden sands of Flagler Beach and its ever-expanding offering of river and ocean view restaurants, this is the last treasure along the Flagler and Volusia Coast. A dozen golf courses are within 15 minutes of the project and for the boater, there are numerous marinas and the Intracoastal Waterway less than a mile away. Beach Village is within walking distance to a new Publix shopping center and both projects offer utilities allowing for a mix of multi-family and single-family homes.

SIZE

232± acres (195± usable acres)

PRICE

\$6,900,000 (\$29,741/acre)

ZONING

PUD (single-family and multi-family)

ROAD FRONTAGE

4,200'± on Roberts Road

UTILITIES

City of Palm Coast and City of Flagler Beach

PARCEL IDs

11-12-31-0650-000A0-0060 - 48.06 acres
02-12-31-0000-01010-0151 - 74.78 acres
02-12-31-0000-01010-0141 - 9.04 acres
02-12-31-0000-01010-0152 - 45.27 acres
02-12-31-0000-01010-0142 - 12.98 acres
02-12-31-0000-01010-0140 - 5.23 acres
02-12-31-0000-01010-0150 - 18.88 acres
11-12-31-0650-000A0-0071 - 18.71 acres

Offering subject to errors, omission, prior sale or withdrawal without notice.

SUBDIVISION LAND FOR SALE

— Commercial Real Estate Investments | Management | Brokerage | Development | Land

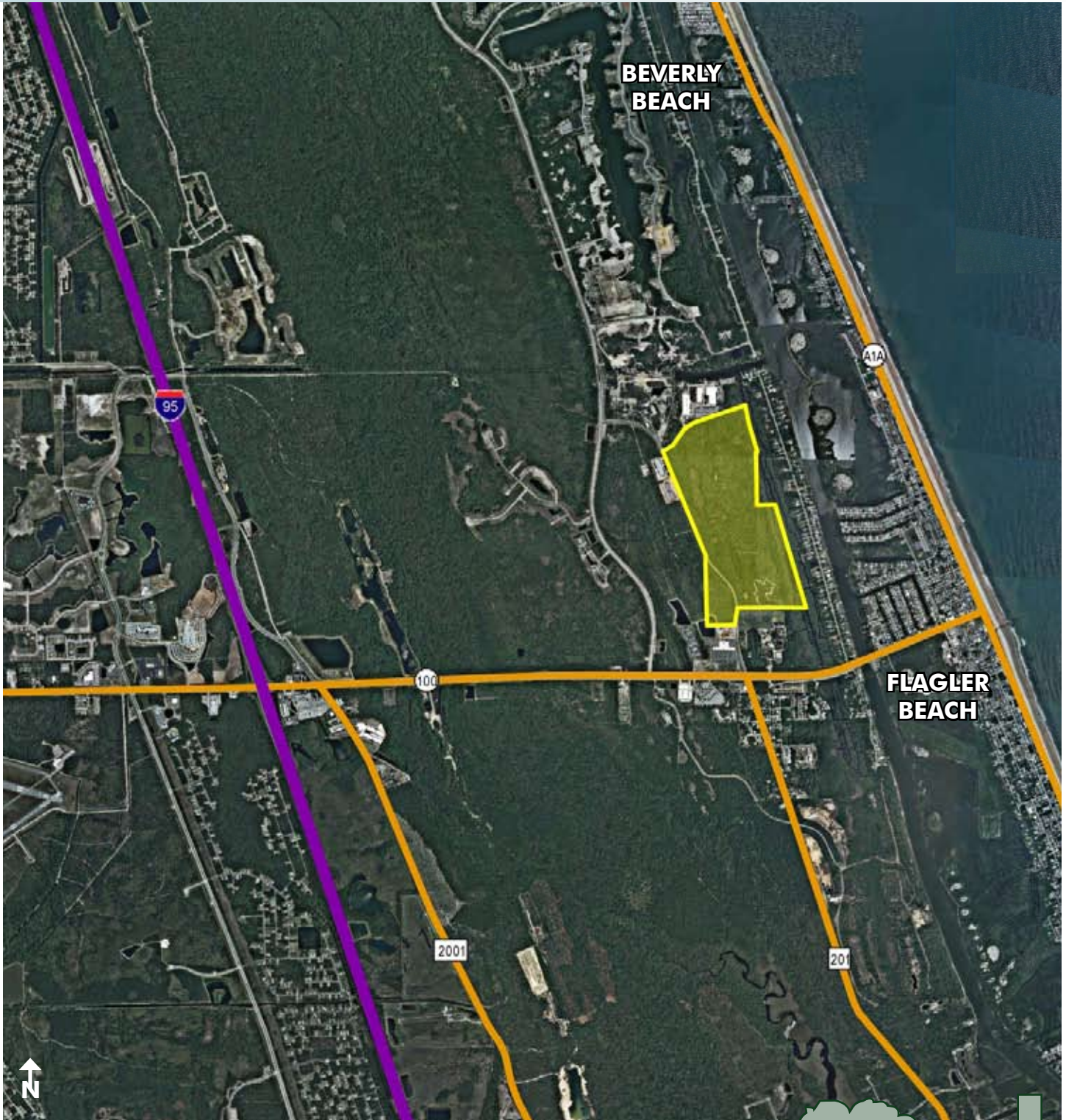
Maury L. Carter & Associates, Inc.
407-422-3144 | www.maurycarter.com



FLAGLER BEACH COASTAL RESIDENTIAL

232± acres

Flagler County, FL



LOCATION MAP

— Commercial Real Estate Investments | Management | Brokerage | Development | Land

Maury L. Carter & Associates, Inc.
407-422-3144 | www.maurycarter.com



FLAGLER BEACH COASTAL RESIDENTIAL

232± acres

Flagler County, FL



COMPREHENSIVE PLAN

Commercial Real Estate Investments | Management | Brokerage | Development | Land

Maury L. Carter & Associates, Inc.

407-422-3144 | www.maurycarter.com

