

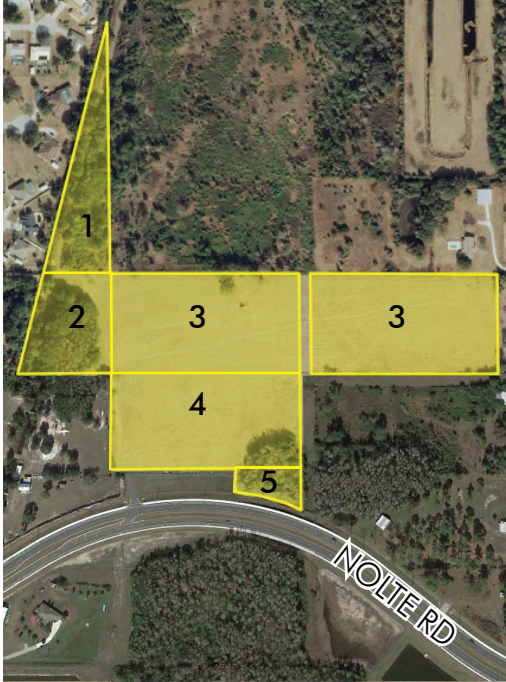
LAND NEAR FL TURNPIKE & HWY 441/192

19± acres

Osceola County, FL

**PRICE
REDUCED**

LAND FOR SALE



LOCATION

Approximately 1½ miles south of HWY 192/HWY 441, lying east of Canoe Creek Road and on the north side of Nolte Road, St. Cloud, Osceola County, FL.

SIZE

19± acres

PRICE

WAS \$1,200,000 - REDUCED TO \$1,000,000

ZONING/FUTURE LAND USE

Parcel 1: zoned RS-2/FLU: Low Density Residential
Parcels 2-5: zoned AC; FLU: Low Density Residential

ROAD FRONTAGE

240'± on Nolte Road

PARCEL IDs

Parcel 1: 14-26-30-4950-0001-0220

Parcel 2: 14-26-30-4950-0001-0385

Parcel 3: 14-26-30-4950-0001-0360

Parcel 4: 14-26-30-4950-0001-0440

Parcel 5: 14-26-30-4950-0001-0530

Offering subject to errors, omission, prior sale or withdrawal without notice.

— Commercial Real Estate Investments | Management | Brokerage | Development | Land

Maury L. Carter & Associates, Inc.
407-422-3144 | www.maurycarter.com

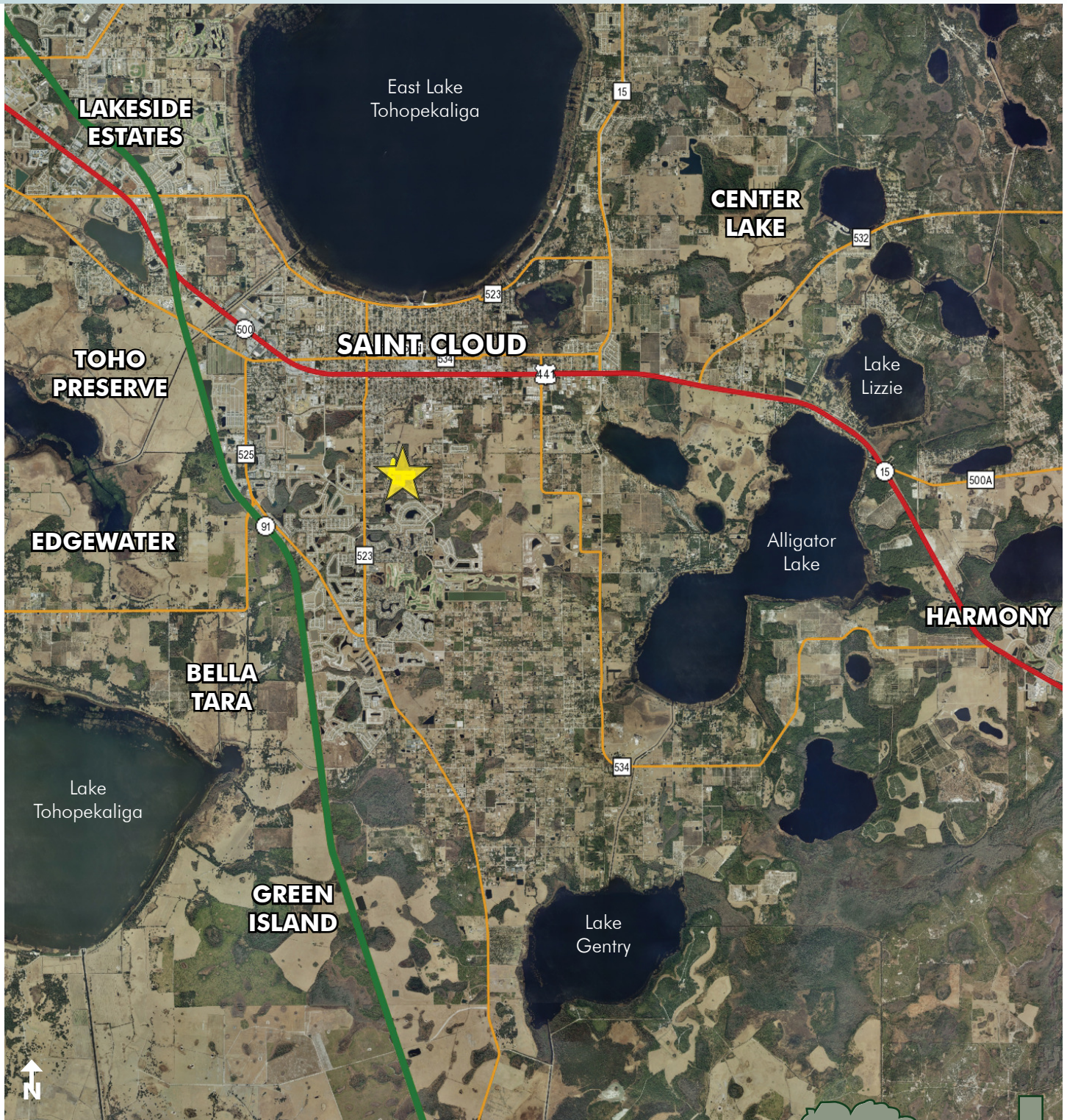


LAND NEAR FL TURNPIKE & HWY 441/192

19± acres

Osceola County, FL

**PRICE
REDUCED**



LOCATION MAP

— Commercial Real Estate Investments | Management | Brokerage | Development | Land

Maury L. Carter & Associates, Inc.
407-422-3144 | www.maurycarter.com

