

SEBRING RESIDENTIAL ACREAGE

30.03 ± gross acres available • 6.41 Net acres •

Approved for 12 Single Family Lots

Highlands County, FL

LAND FOR SALE



LOCATION

The property is located on the southeast quadrant of Valerie Boulevard and Memorial Drive in Sebring, Highlands County, Florida.

SIZE

- 30.03 Gross acres
- 6.41 Net acres

Approved for 12 single family lots (Holness Subdivision)

PRICE

\$300,000.00

ZONING

The property is zoned R1; Single Family Residential

ROAD FRONTAGE/ACCESS

The site has 950 +/- feet of frontage on the south side of Valerie Boulevard, 1800 feet of frontage on the east side of Memorial Drive, 1750 on the north side of Northwest Lake Sebring Drive and 950 feet on the west side of Manatee Drive.

DESCRIPTION

This is an opportunity for a small residential builder to construct twelve single family homes in the heart of Sebring, Highlands County. The property has been approved as the Holness subdivision on 6.41 acres along the northern boundary of the site.

Offering subject to errors, omission, prior sale or withdrawal without notice.



— Commercial Real Estate Investments | Management | Brokerage | Development | Land

Maury L. Carter & Associates, Inc.
407-422-3144 | www.maurycarter.com



SEBRING RESIDENTIAL ACREAGE

30.03 ± gross acres available • 6.41 Net acres •

Approved for 12 Single Family Lots

Highlands County, FL



PROPERTY MAP

— Commercial Real Estate Investments | Management | Brokerage | Development | Land

Maury L. Carter & Associates, Inc.
407-422-3144 | www.maurycarter.com

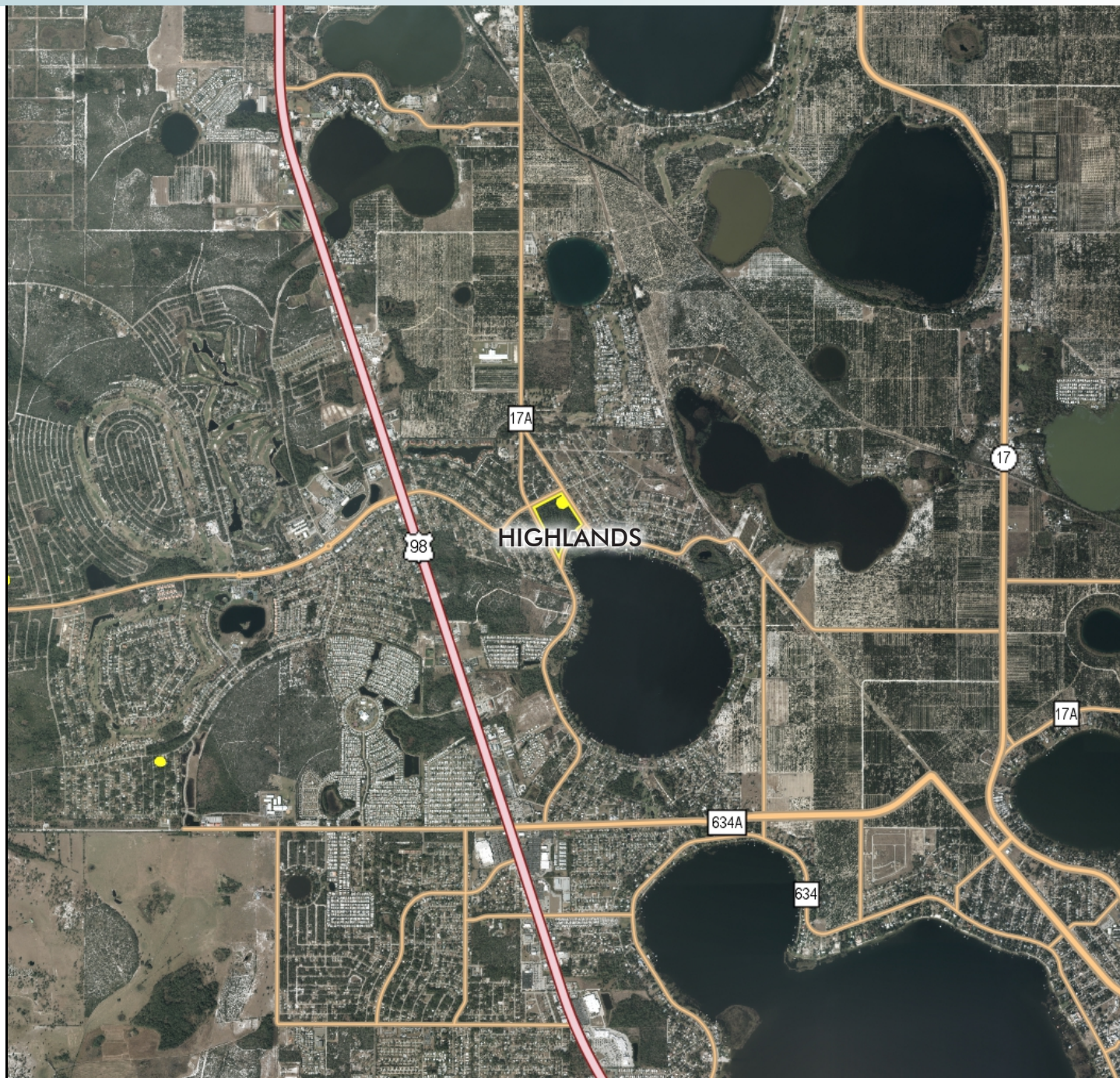


SEBRING RESIDENTIAL ACREAGE

30.03 ± gross acres available • 6.41 Net acres •

Approved for 12 Single Family Lots

Highlands County, FL



REGIONAL MAP

— Commercial Real Estate Investments | Management | Brokerage | Development | Land

Maury L. Carter & Associates, Inc.
407-422-3144 | www.maurycarter.com

