

I-75 INTERCHANGE LAND

157± acres

Sumter County, FL



LOCATION

This property is located at the interchange at the NE corner of I-75 and Hwy 478 (CR 673).

SIZE

157± acres

PRICE

\$2,625,000 (\$17,500/acre)

REDUCED TO \$2,250,000 (\$14,330/acre)

ZONING/FUTURE LAND USE

10± acres along east side of I-75 at Hwy 478 (CR 673) zoned Commercial with FLU of Commercial. Remaining 140± acres zoned Agricultural with FLU of Agricultural.

ROAD FRONTAGE

2,400'± on Hwy 478 (CR 673)

3,500'± on I-75

Offering subject to errors, omission, prior sale or withdrawal without notice.

LAND FOR SALE

— Commercial Real Estate Investments | Management | Brokerage | Development | Land —

Maury L. Carter & Associates, Inc.

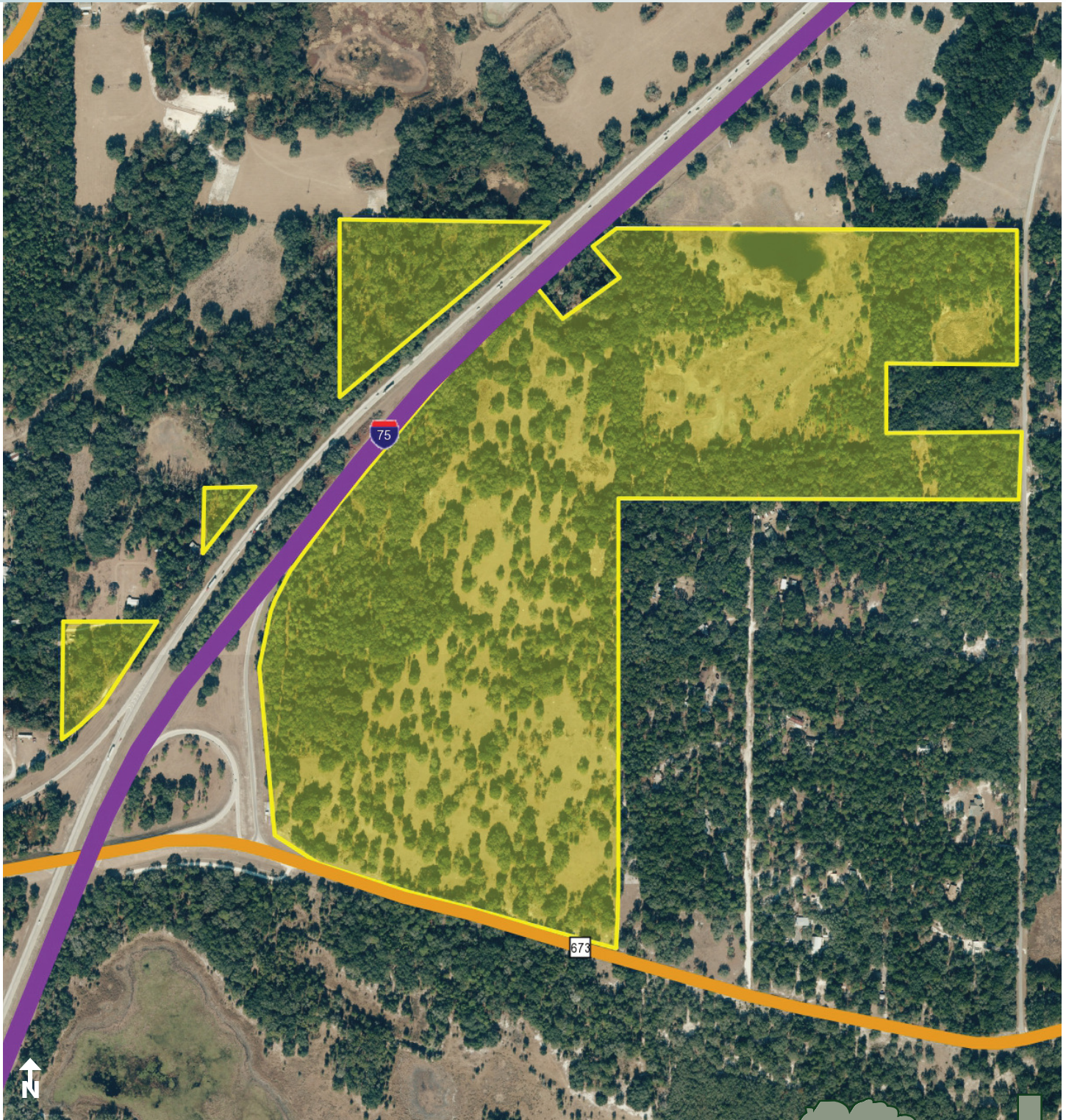
407-422-3144 | www.maurycarter.com



I-75 INTERCHANGE LAND

157± acres

Sumter County, FL



PARCEL MAP

— Commercial Real Estate Investments | Management | Brokerage | Development | Land —

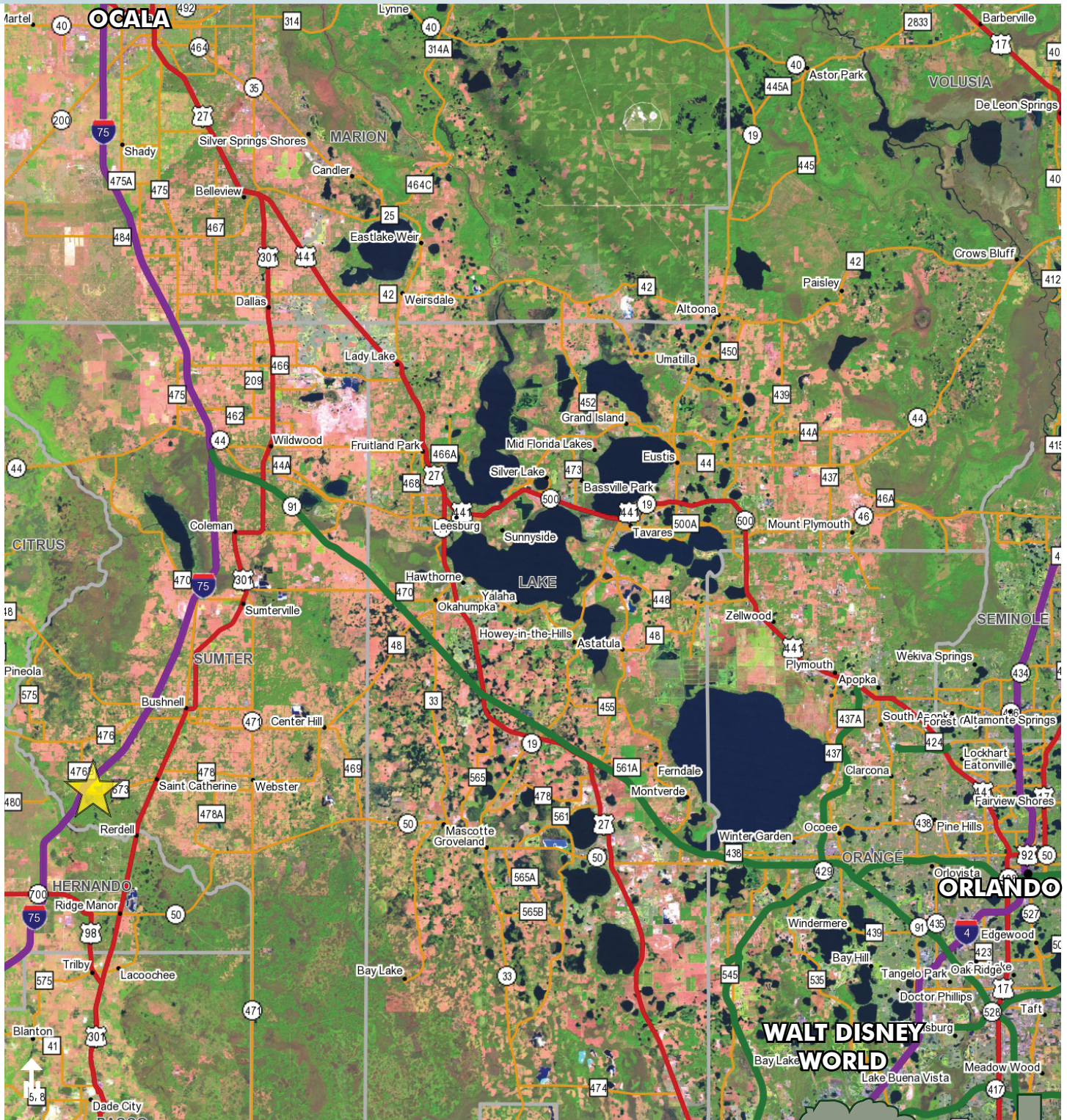
Maury L. Carter & Associates, Inc.
407-422-3144 | www.maurycarter.com



I-75 INTERCHANGE LAND

157± acres

Sumter County, FL



LOCATION MAP

— Commercial Real Estate Investments | Management | Brokerage | Development | Land

Maury L. Carter & Associates, Inc.

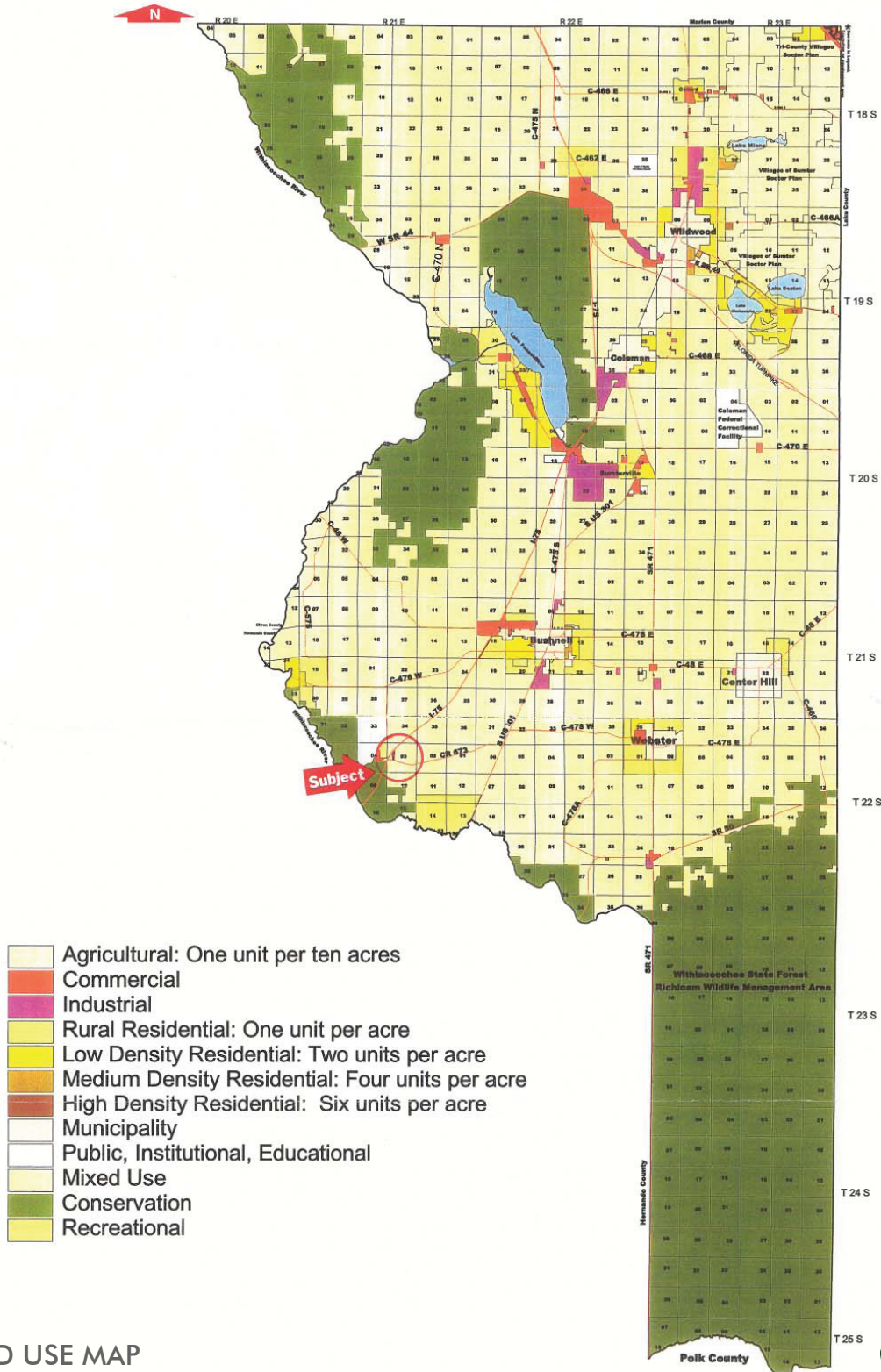
407-422-3144 | www.maurycarter.com



I-75 INTERCHANGE LAND

157± acres

Sumter County, FL



LAND USE MAP

— Commercial Real Estate Investments | Management | Brokerage | Development | Land

Maury L. Carter & Associates, Inc.

407-422-3144 | www.maurycarter.com



157± acres
Sumter County, FL



Maury L. Carter & Associates, Inc.
407-422-3144 | www.maurycarter.com

