

# WOLF BRANCH ROAD ACREAGE

12.47± acres  
Lake County, FL



## LOCATION

Just south of Wolf Branch Road, Lake County, FL  
(unincorporated Lake County, FL)

## SIZE

12.47± acres

## PRICE

\$170,000.00 or \$13,632/acre

## ZONING

A

## FUTURE LAND USE

Regional Office – ask for Allowable Uses Sheet and information

## ROAD FRONTAGE/ACCESS

No road frontage. Access through easement by way of Investor Road

## UTILITIES

Well and septic required. Power approximately 300' away on Wolf Branch Road

## DESCRIPTION

This property is currently cattle grazing land. The land boast elevation changes that give a natural charm to the landscape. Long term investment opportunity.

## PARCEL ID

261927000100002400

Offering subject to errors, omission, prior sale or withdrawal without notice.

LAND FOR SALE

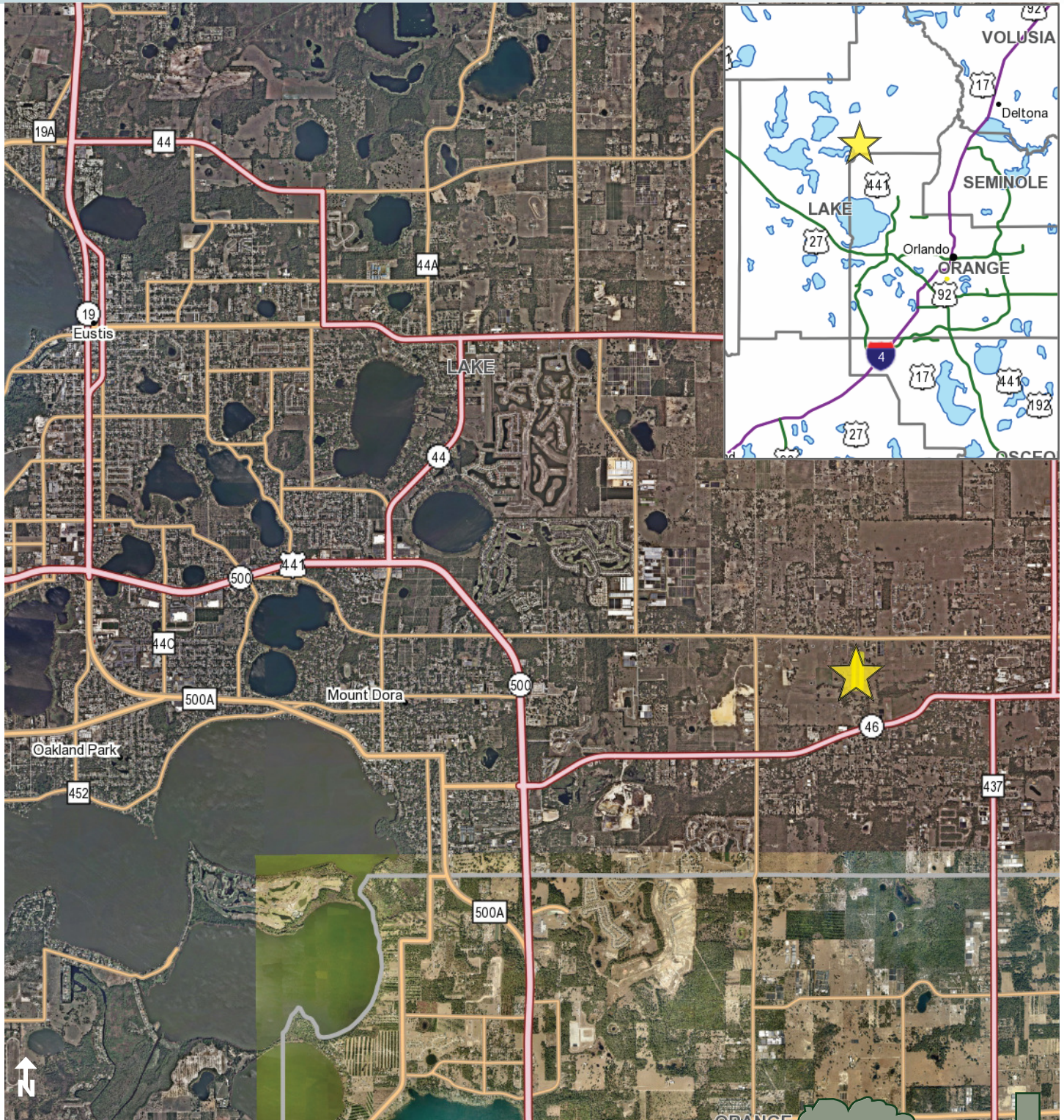
— Commercial Real Estate Investments | Management | Brokerage | Development | Land

Maury L. Carter & Associates, Inc.  
407-422-3144 | [www.maurycarter.com](http://www.maurycarter.com)



# WOLF BRANCH ROAD ACREAGE

12.47± acres  
Lake County, FL



VICINITY MAP

— Commercial Real Estate Investments | Management | Brokerage | Development | Land

Maury L. Carter & Associates, Inc.  
407-422-3144 | [www.maurycarter.com](http://www.maurycarter.com)

