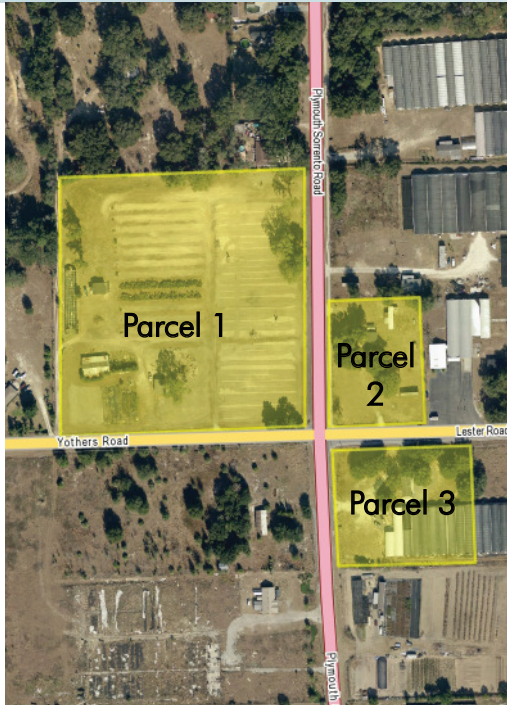


CITY OF APOPKA COMMERCIAL PARCELS

8.95±/1.67±/2.35± acres

Apopka, FL



LOCATION

Intersection of Plymouth Sorrento Road and Lester Road in Apopka

PARCEL 1

8.95 acres

City of Apopka zoning C-1-Retail Commercial district

PRICE: \$1,400,000

PARCEL 2

1.67 acres

City of Apopka Commercial PUD zoning

Up to 18,000 sf of retail/office entitlements

PRICE: \$730,000

PARCEL 3

2.35 acres

City of Apopka Commercial PUD zoning

Up to 26,000 sf of retail/office entitlements

PRICE: \$870,000

DESCRIPTION

The listed parcels are at the nearest commercial intersection to the new SR429/SR414 beltway exit ramp.

Offering subject to errors, omission, prior sale or withdrawal without notice.

PARCELS FOR SALE

— Commercial Real Estate Investments | Management | Brokerage | Development | Land —

Maury L. Carter & Associates, Inc.

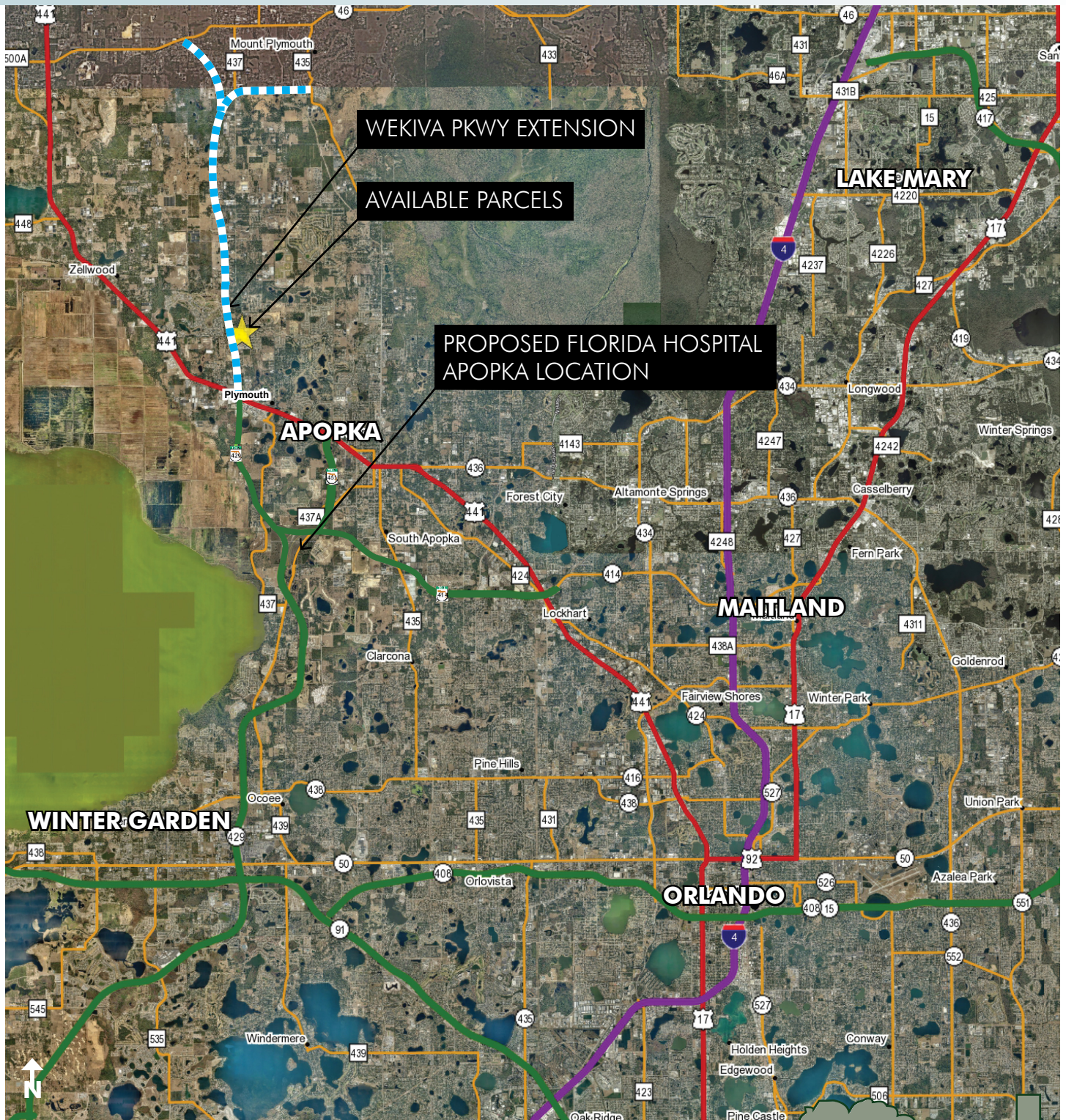
407-422-3144 | www.maurycarter.com



CITY OF APOPKA COMMERCIAL PARCELS

8.95±/1.67±/2.35± acres

Apopka, FL



LOCATION MAP

— Commercial Real Estate Investments | Management | Brokerage | Development | Land

Maury L. Carter & Associates, Inc.

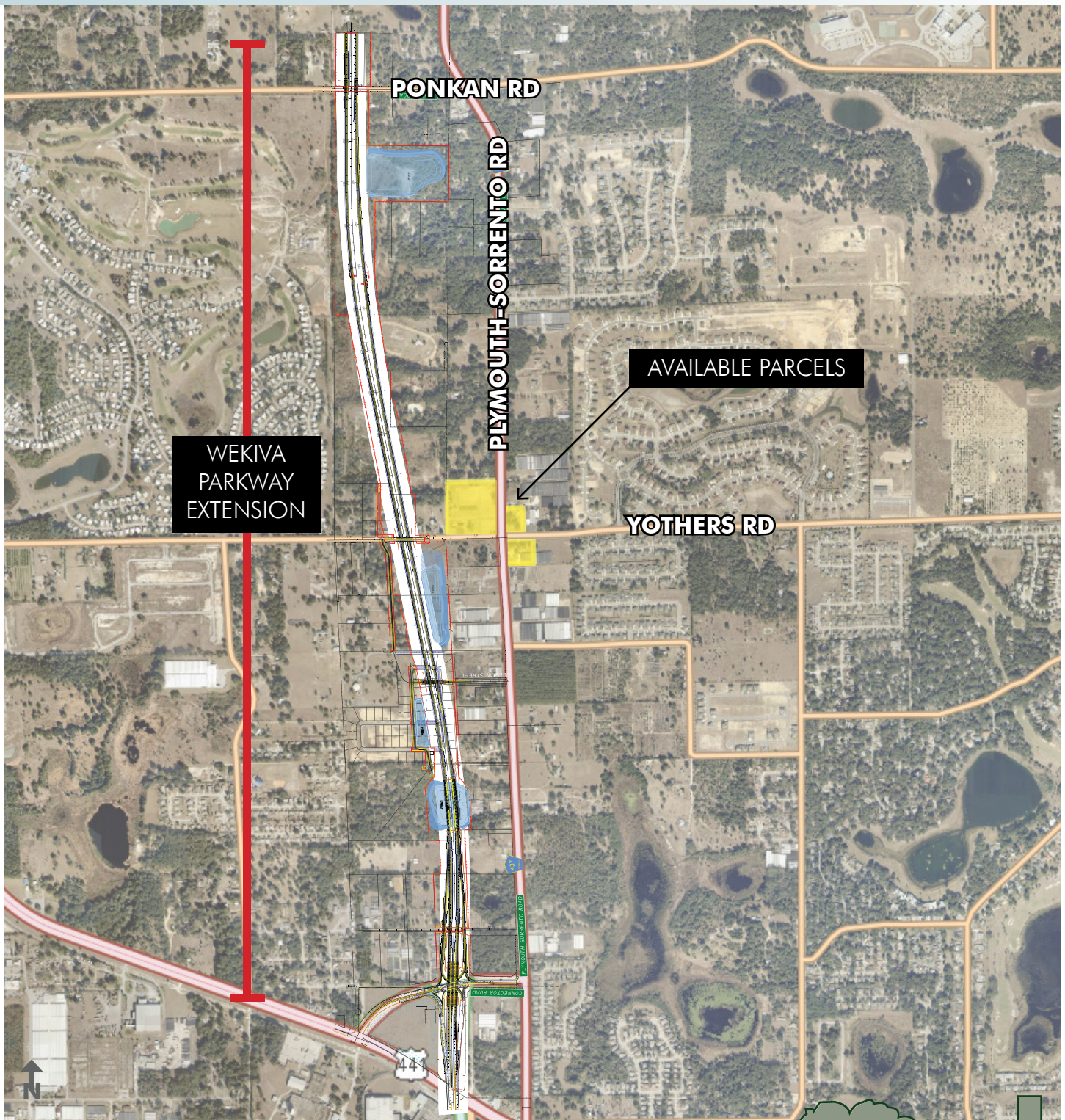
407-422-3144 | www.maurycarter.com



CITY OF APOPKA COMMERCIAL PARCELS

8.95±/1.67±/2.35± acres

Apopka, FL



VICINITY MAP

— Commercial Real Estate Investments | Management | Brokerage | Development | Land

Maury L. Carter & Associates, Inc.
407-422-3144 | www.maurycarter.com

