

**19.3± ACRES  
KEENE ROAD  
ORANGE COUNTY, FLORIDA**

**SIZE:** 19.3± acres

**PRICE:** \$1,746,408.00 ——— (~~\$2.08 per square foot~~)  
**\$1,256,216.00** (**\$1.49 per square foot**)

**LOCATION:** The property is located in the City of Apopka in northwest Orange County at the intersection of Ocoee-Apopka Road (CR 437) and Keene Road, east of the new Western Beltway (SR 429).

**ROAD FRONTAGE:** 1,425± feet on east side of Ocoee-Apopka Road (CR 437)  
485± feet on south side of Keene Road.

**UTILITIES:** City of Apopka

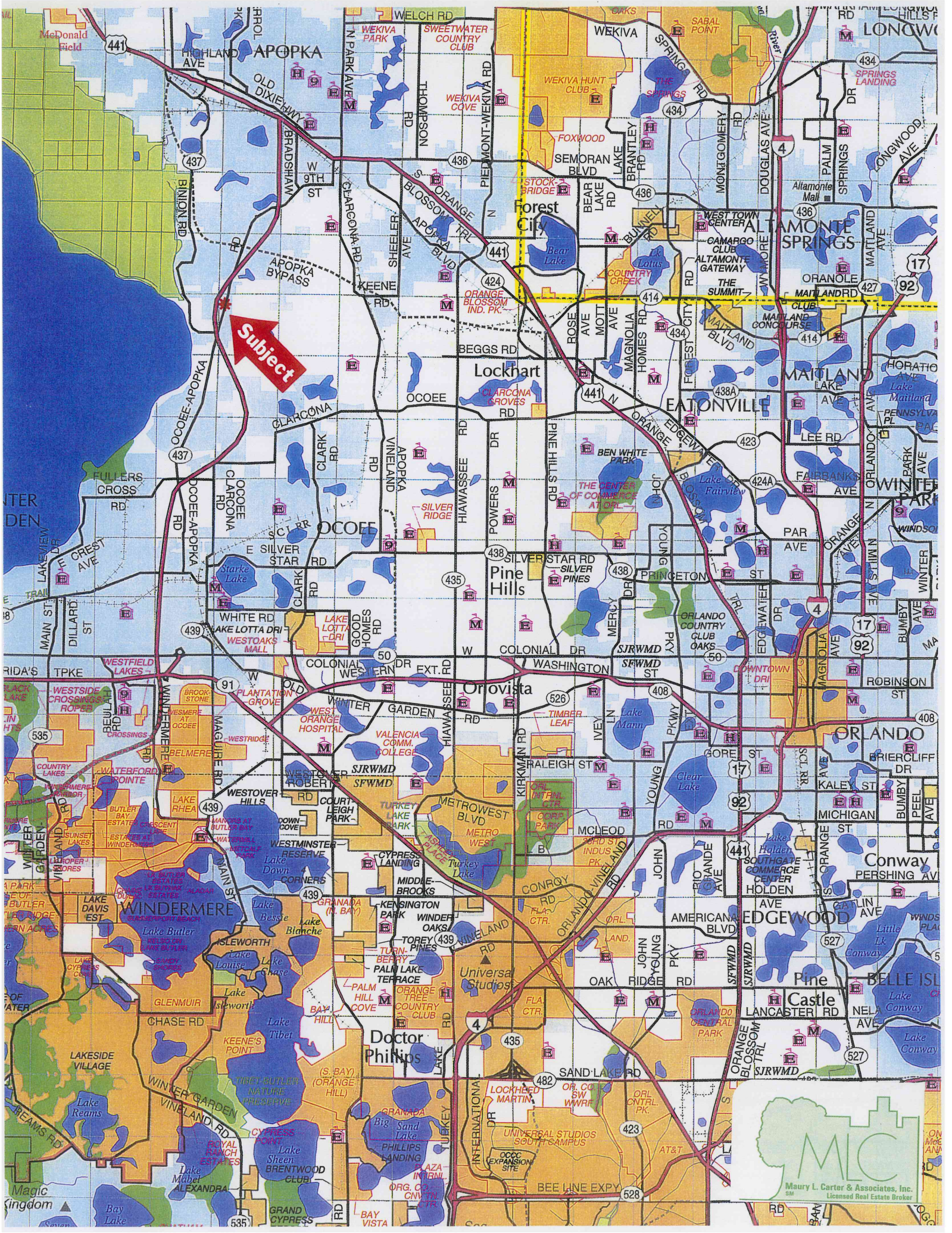
**ZONING/FUTURE  
LAND USE:** Property is currently zoned Professional Office, City of Apopka.

**NOTE:** Offering subject to errors, omission, prior sale or withdrawal without notice.

3333 S. Orange Avenue, Suite 200 • Orlando, Florida 32806-8500  
Post Office Box 568821 • Orlando, Florida 32856-8821  
Telephone (407) 422-3144  
Fax (407) 422-3155  
[www.maurycarter.com](http://www.maurycarter.com)



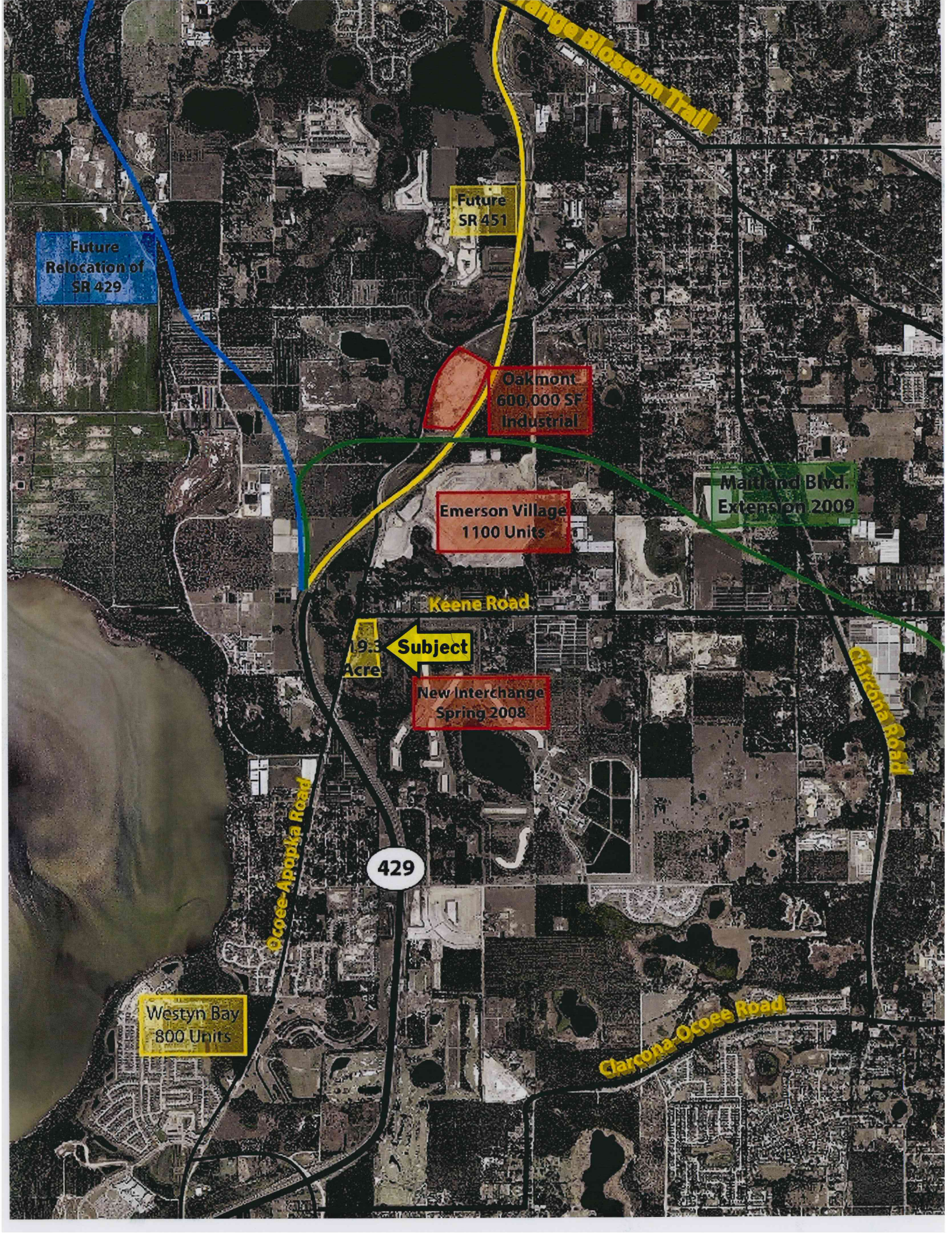




**Subject**

**Maury L. Carter & Associates, Inc.**  
SM  
Licensed Real Estate Broker





Future Relocation of SR 429

Future SR 451

Oakmont 600,000 SF Industrial

Emerson Village 1100 Units

Maitland Blvd. Extension 2009

Keene Road

19.3 Acre Subject

New Interchange Spring 2008

Westyn Bay 800 Units

429

Range Blossom Trail

Ocoee Appopka Road

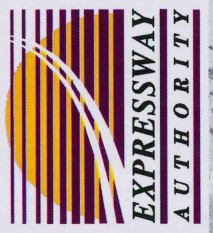
Garconna Road

Garconna Ocoee Road





**S.R. 414 (MAITLAND BLVD. EXTENSION)**  
**S.R. 429/C.R. 437A Interchange**  
**Contract 429- 200A**  
**SUBJECT TO CHANGE**



**END PROJECT**  
**429-200A**

**BEGIN PROJECT**  
**429-200A**

**LEGEND**

- L.A. RIGHT-OF-WAY
- R.E. WALLS
- BRIDGES
- MEDIAN BARRIER WALL
- PONDS

