

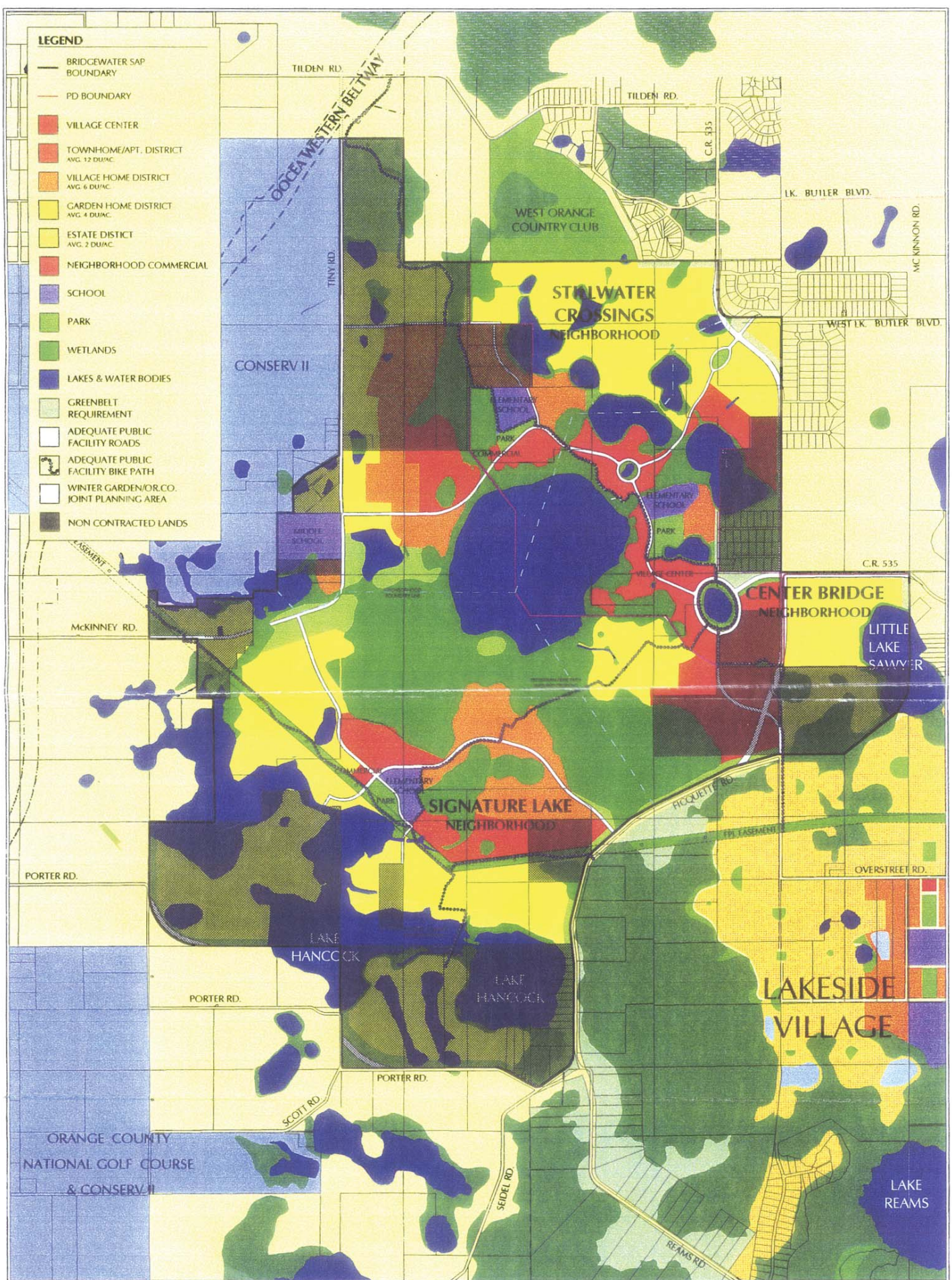
**SUMMERPORT BOULEVARD
HIGHWAY 535 AND FICQUETTE HANCOCK ROAD
PUBLIX ANCHORED SHOPPING CENTER
ORANGE COUNTY**

- SIZE:** 1 outparcel
1.3 acres (Lot 2)
- PRICE:** Ground lease available.
\$95,000 per year
- LOCATION:** Located at southwest corner of Summerport
Boulevard (Highway 535) and Ficquette Hancock
Road in Publix anchored shopping center.
- ZONING:** Village Center, Stillwater Crossings/Centerbridge
PD.
- ROAD FRONTAGE:** 188± feet on Summerport Village Parkway and
200± feet on Ficquette Hancock Road. (main entry
into Publix)
- UTILITIES:** Utilities to site, Orange County
- NOTE:** Offering subject to errors, omissions, prior sale or
withdrawal without notice.

3333 S. Orange Avenue, Suite 200 • Orlando, Florida 32806-8500
Post Office Box 568821 • Orlando, Florida 32856-8821
Telephone: (407) 422-3144
Fax: (407) 422-3155
www.maurycarter.com







APPROVED PD WITHIN APPROVED SAP

BRIDGEWATER

A VILLAGE IN HORIZON WEST, ORANGE COUNTY, FLORIDA

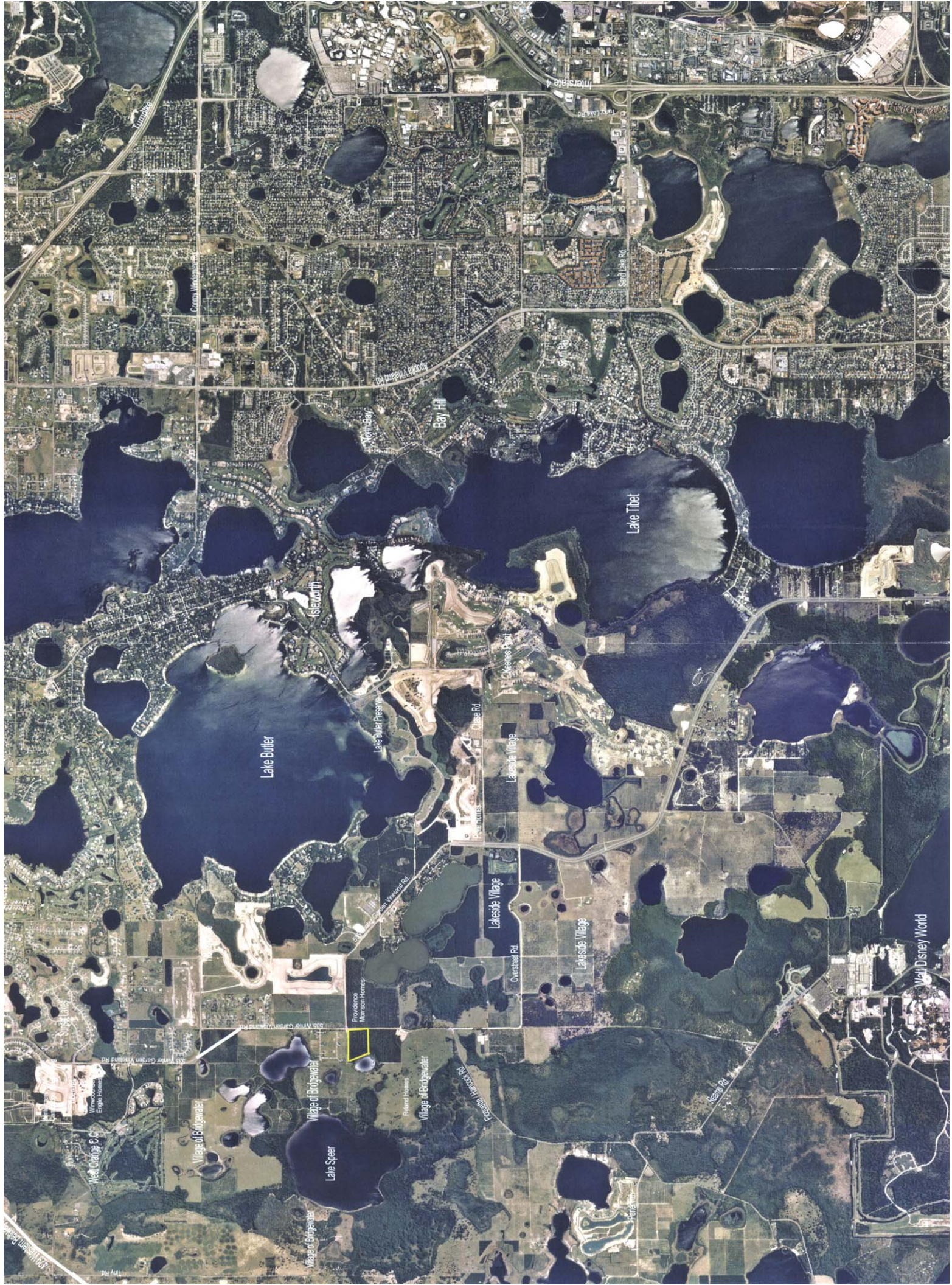
MILLER SELLEN CONNER & WALSH

Community Planners, Designers & Engineers, 214 East Lucerne Circle, Orlando, Florida 32801 Telephone: (407) 422-3330 Fax: (407) 422-3329 E-mail: mail@miller-sellen.com

1/16 Bridgewater SAP with PD 6.5-99.mxd
ASDW # 5803C.252

DATE: 6 August, 1999





Future
Towncenter

Future Orange
County Highschool

CR 535

CR 535

SUMMIT BLVD.

FIGUETTE HANCOCK ROAD

