

SOUTHMEADOW

S ORANGE AVE/N of TOWN CENTER BLVD

8.5± acres (Tract 39) • Orlando, FL



LOCATION

Located just 1/4 mile north of the signaled intersection major roadways Town Center Blvd. and South Orange Ave. Join Wawa and Whirlpool in this superior location between Hunter's Creek and Southchase.

SIZE

8.5± acres

PRICE

WAS \$1M - NOW \$839,323 (\$2.27/sf)

ZONING

Southchase DRI. Industrial - approved for 40,000sf of building area.

ROAD FRONTAGE

1,084'± on Orange Avenue

UTILITIES

Orange County

Offering subject to errors, omission, prior sale or withdrawal without notice.

OUTPARCEL FOR SALE

— Commercial Real Estate Investments | Management | Brokerage | Development | Land —

Maury L. Carter & Associates, Inc.

407-422-3144 | www.maurycarter.com



SOUTHMEADOW

S ORANGE AVE/N of TOWN CENTER BLVD

8.5± acres (Tract 39) • Orlando, FL



REGIONAL MAP

— Commercial Real Estate Investments | Management | Brokerage | Development | Land

Maury L. Carter & Associates, Inc.

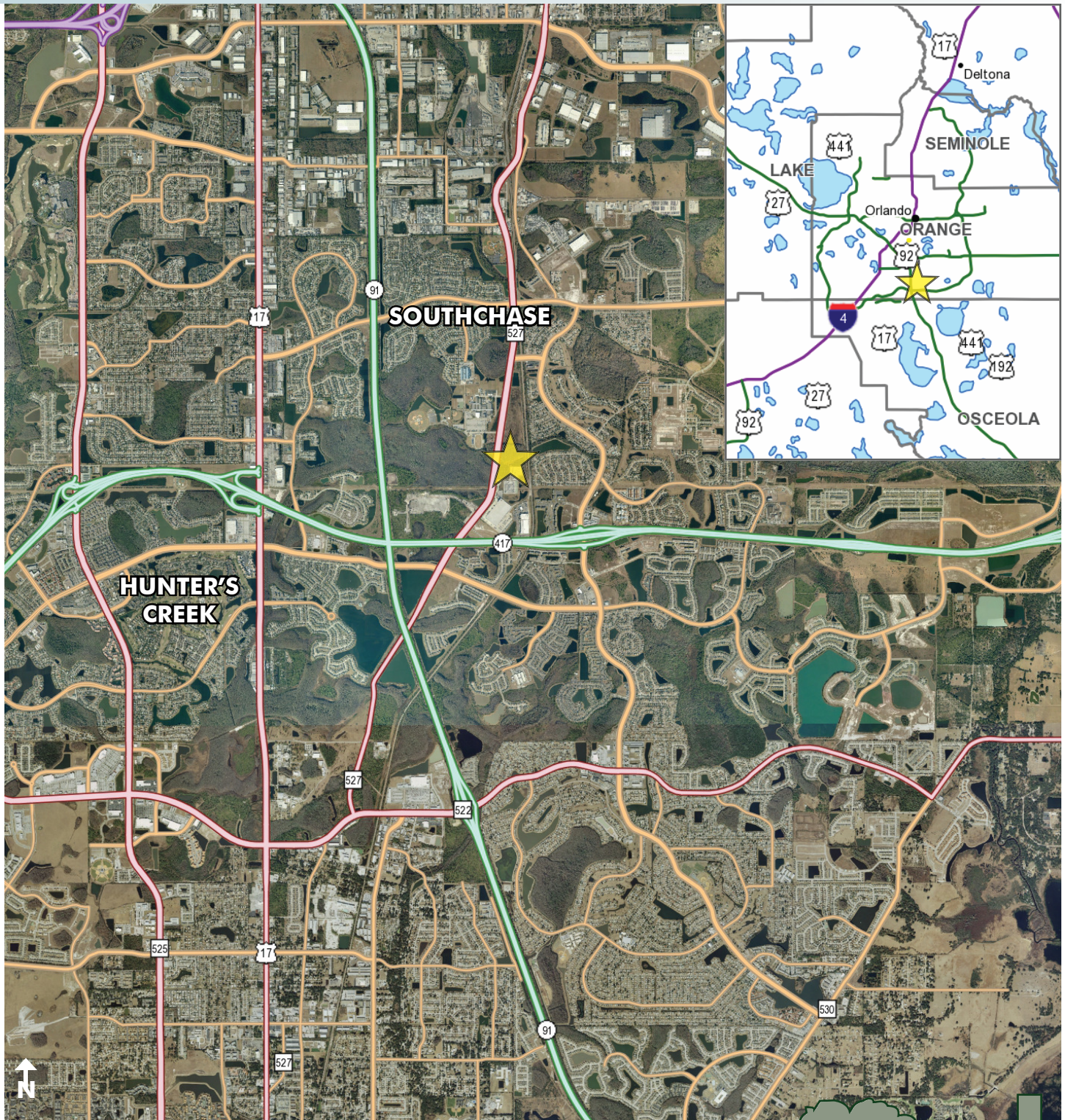
407-422-3144 | www.maurycarter.com



SOUTHMEADOW

S ORANGE AVE/N of TOWN CENTER BLVD

8.5± acres (Tract 39) • Orlando, FL



LOCATION MAP

— Commercial Real Estate Investments | Management | Brokerage | Development | Land

Maury L. Carter & Associates, Inc.

407-422-3144 | www.maurycarter.com



8.5± acres (Tract 39) • Orlando, FL

