

HWY 441 NEAR HWY 436

0.96± acre

Orange County, FL



LOCATION/DESCRIPTION

Commercial lot on the north side of US Hwy 441 (N Orange Blossom Trail) at Century Lane, approx. $\frac{3}{4}$ miles east of US Hwy 441 and Hwy 436 intersection, in the City of Apopka, Orange County. Billboard lease and easement are not included.

SIZE

0.96± acre

PRICE

REDUCED TO \$195,000 (was \$225,000)

ZONING/FUTURE LAND USE

Zoned C-1 (City of Apopka); FLU: Commercial

ROAD FRONTAGE

99'± on N side of US Hwy 441

PARCEL ID

14-21-28-1305-00-050

Offering subject to errors, omission, prior sale or withdrawal without notice.

LAND FOR SALE

— Commercial Real Estate Investments | Management | Brokerage | Development | Land

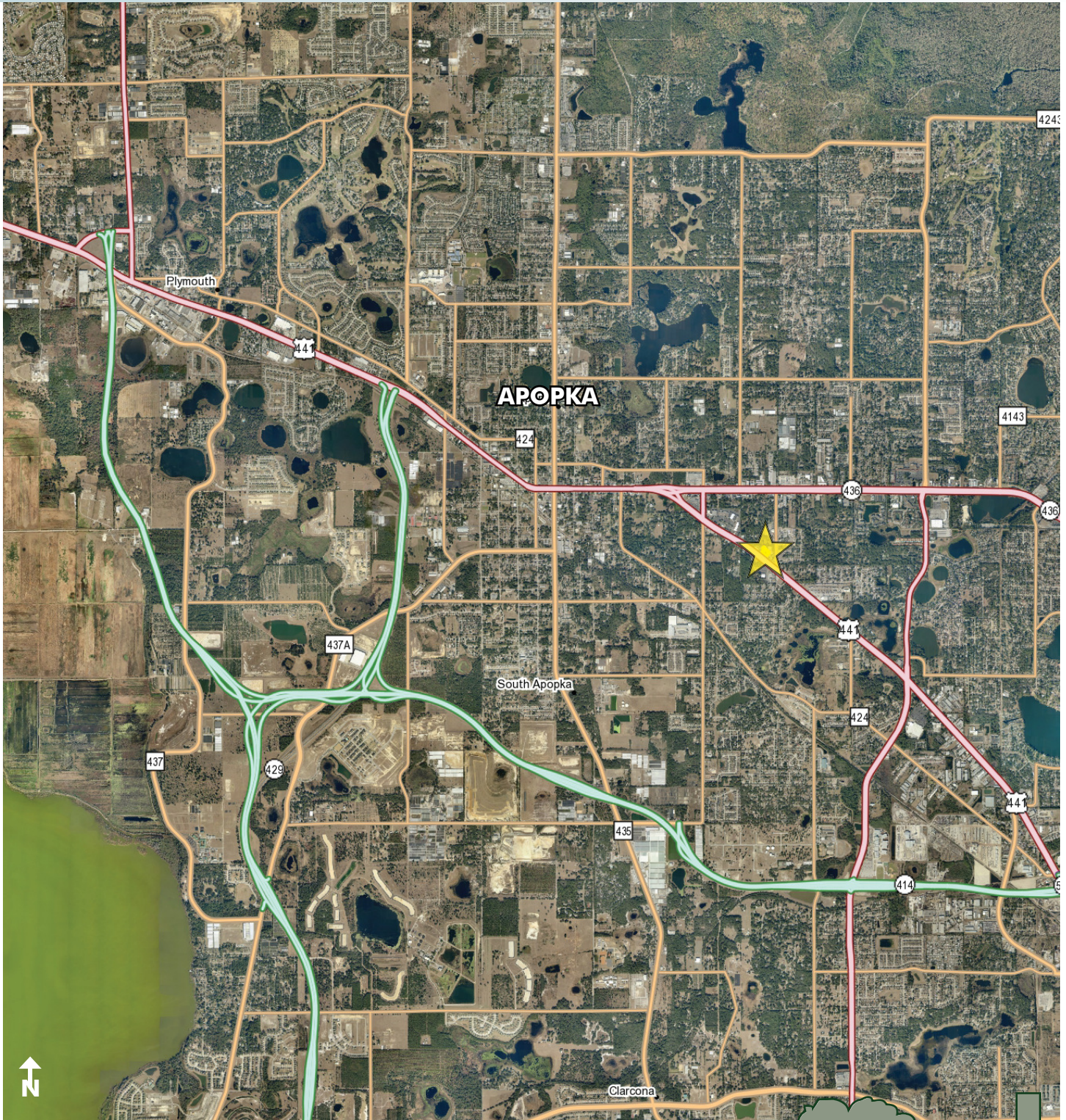
Maury L. Carter & Associates, Inc.
407-422-3144 | www.maurycarter.com



HWY 441 NEAR HWY 436

0.96± acre

Orange County, FL



LOCATION MAP

— Commercial Real Estate Investments | Management | Brokerage | Development | Land

Maury L. Carter & Associates, Inc.
407-422-3144 | www.maurycarter.com

