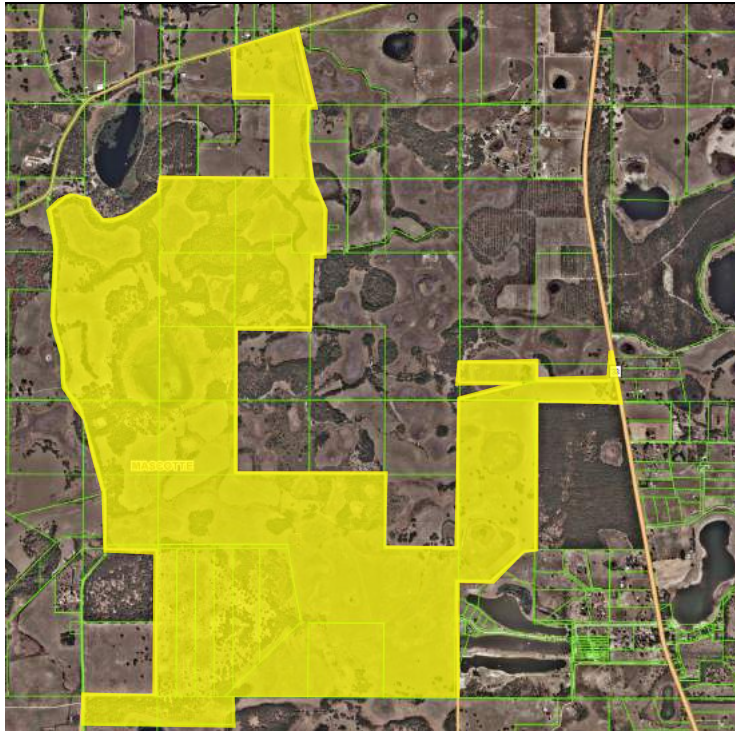


# VALENTINE RANCH

1,082± acres  
Lake County, FL



## LOCATION

Located west of State Road 33, south of Austin Merritt Road, and east of Honeycut Road in Northwest Lake County, FL.

## SIZE

1,082± acres

## PRICE

\$12,984,000 (\$12,000 per acre)

## ZONING/FUTURE LAND USE

The property has a future land use category of Rural Residential which allows 1 unit per acre.

The property still has a zoning of Agriculture as it has not been rezoned within the City of Mascotte.

## ROAD FRONTAGE

837± on west side of SR33

1,110± on south side of Austin Merritt Road

6,737± on east side of Honeycut Road

## UTILITIES

City of Mascotte.

Offering subject to errors, omissions, prior sale or withdrawal without notice.

LAND FOR SALE

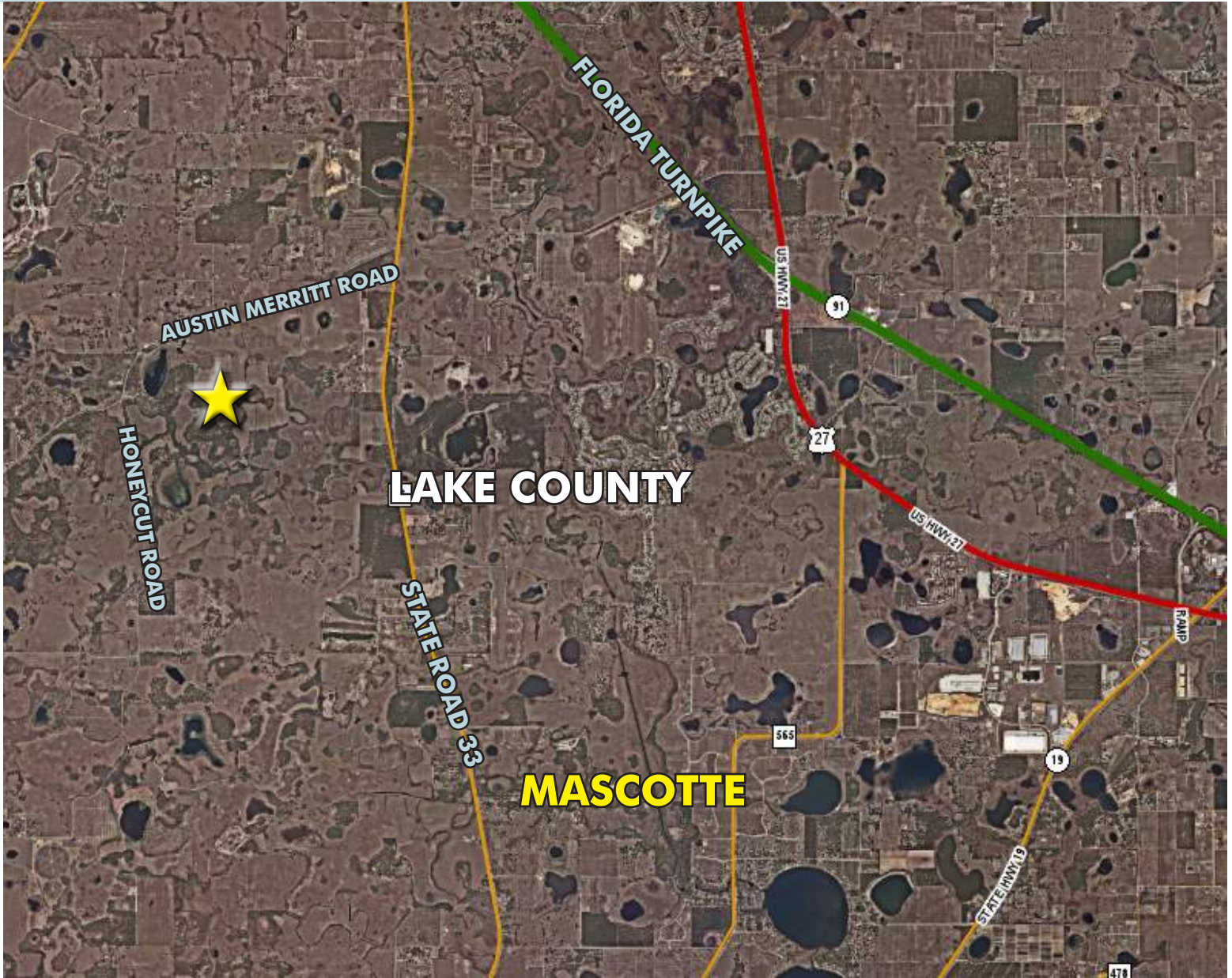
— Commercial Real Estate Investments | Management | Brokerage | Development | Land

Maury L. Carter & Associates, Inc.  
407-422-3144 | [www.maurycarter.com](http://www.maurycarter.com)



# VALENTINE RANCH

1,082± Acres  
Lake County, FL



REGIONAL MAP

— Commercial Real Estate Investments | Management | Brokerage | Development | Land

Maury L. Carter & Associates, Inc.  
407-422-3144 | [www.maurycarter.com](http://www.maurycarter.com)





# VALENTINE RANCH

1,082± Acres  
Lake County, FL



— Commercial Real Estate Investments | Management | Brokerage | Development | Land

Maury L. Carter & Associates, Inc.  
407-422-3144 | [www.maurycarter.com](http://www.maurycarter.com)

