

PRIME DEVELOPMENT 35 ± ACRES

Hwys 561 & 455
Lake County, FL



LOCATION

Located in the rapidly-growing South Lake County, at the southwest corner of Highway 561 and Highway 455.

SIZE

35 ± acres

PRICE

\$800,000 (\$22,857/acre)

ZONING/FUTURE LAND USE

Zoning: Agricultural
Future Land Use Map Designation: Rural
Commercial Potential!

ROAD FRONTAGE

1,585' ± on County Hwy 561
932' ± on County Hwy 455

Offering subject to errors, omission, prior sale or withdrawal without notice.

LAND FOR SALE

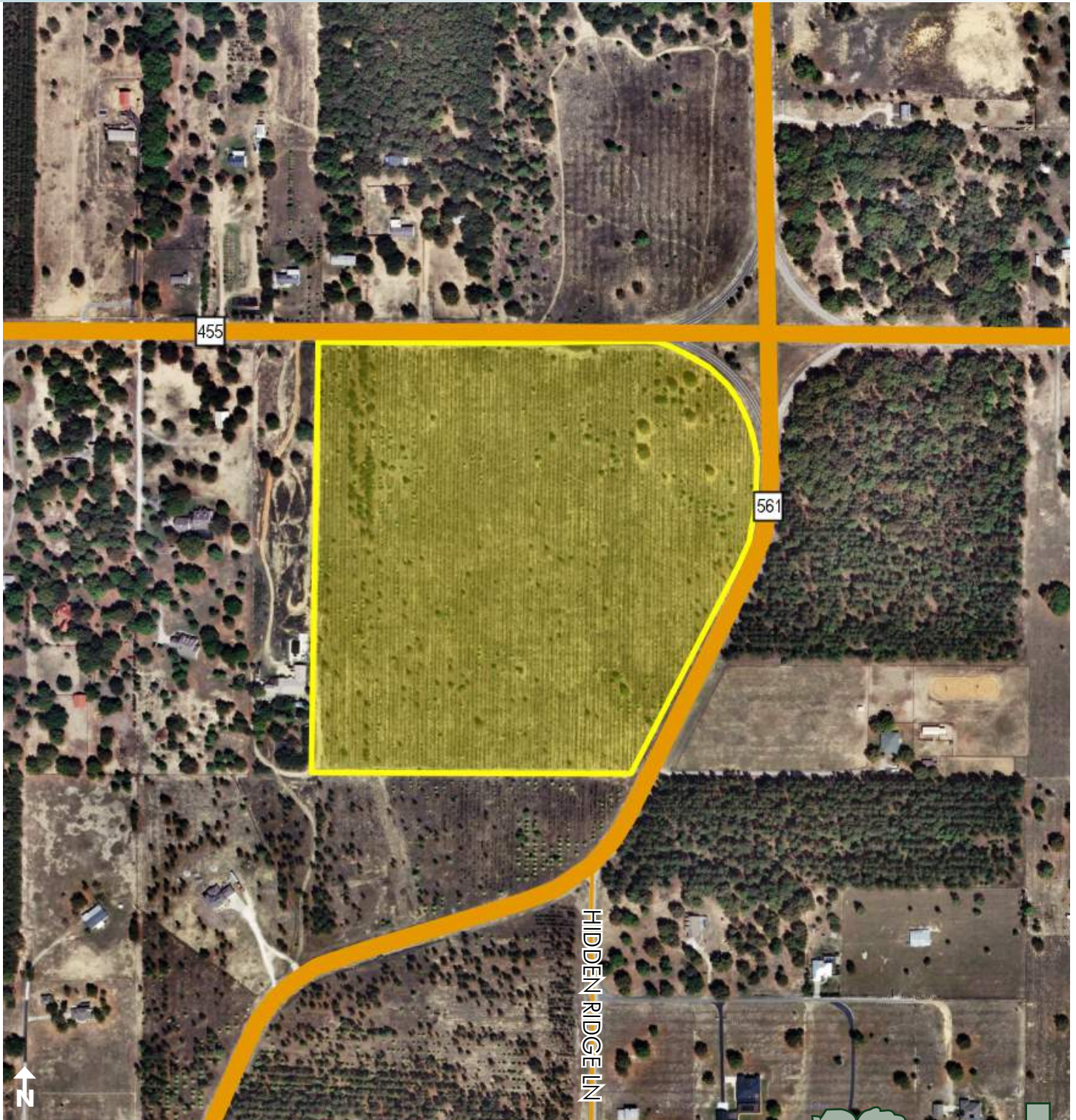
— Commercial Real Estate Investments | Management | Brokerage | Development | Land

Maury L. Carter & Associates, Inc.
407-422-3144 | www.maurycarter.com



PRIME DEVELOPMENT 35 ± ACRES

Hwys 561 & 455
Lake County, FL



PROPERTY MAP

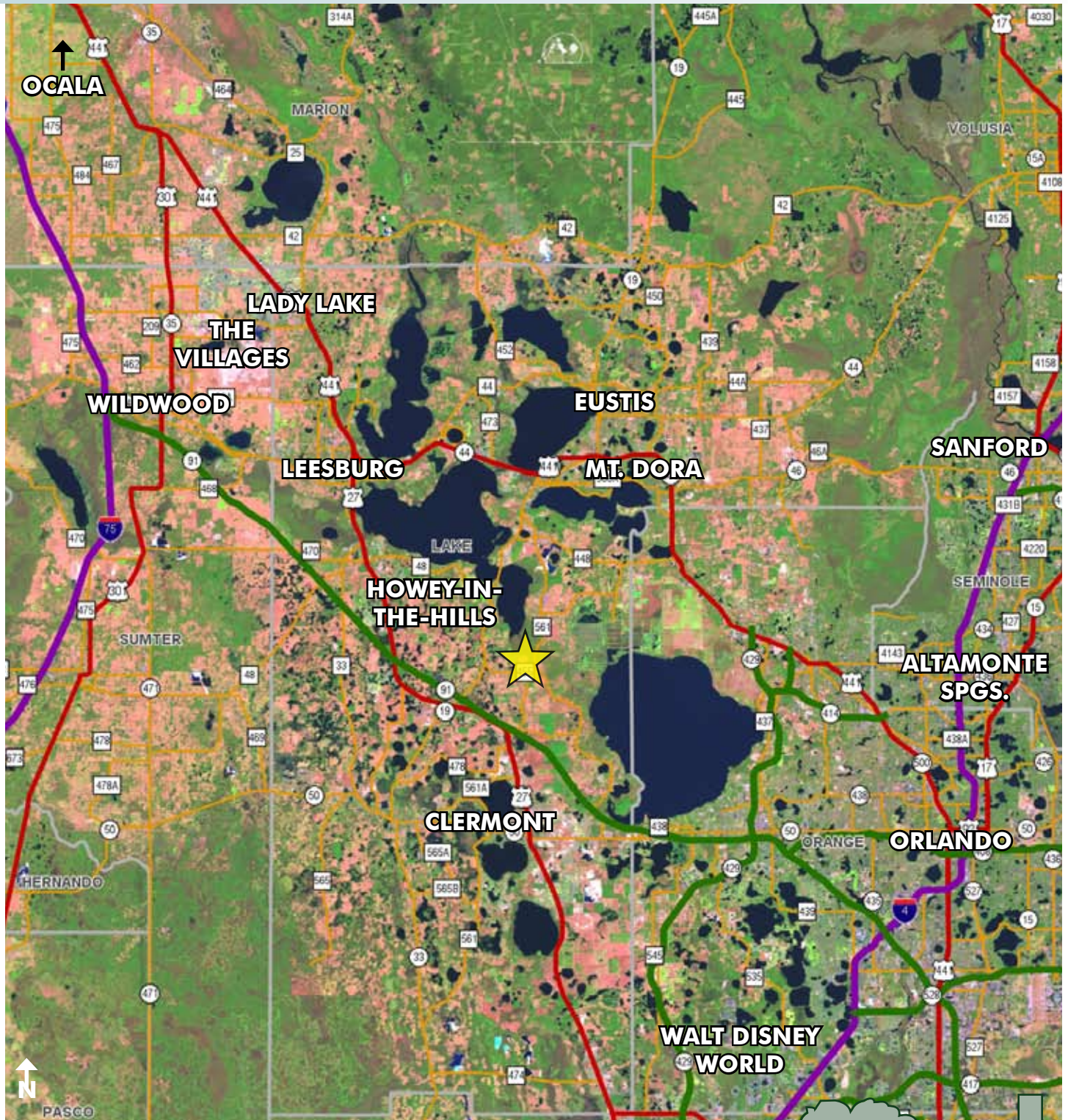
— Commercial Real Estate Investments | Management | Brokerage | Development | Land

Maury L. Carter & Associates, Inc.
407-422-3144 | www.maurycarter.com



PRIME DEVELOPMENT 35 ± ACRES

Hwys 561 & 455
Lake County, FL



LOCATION MAP

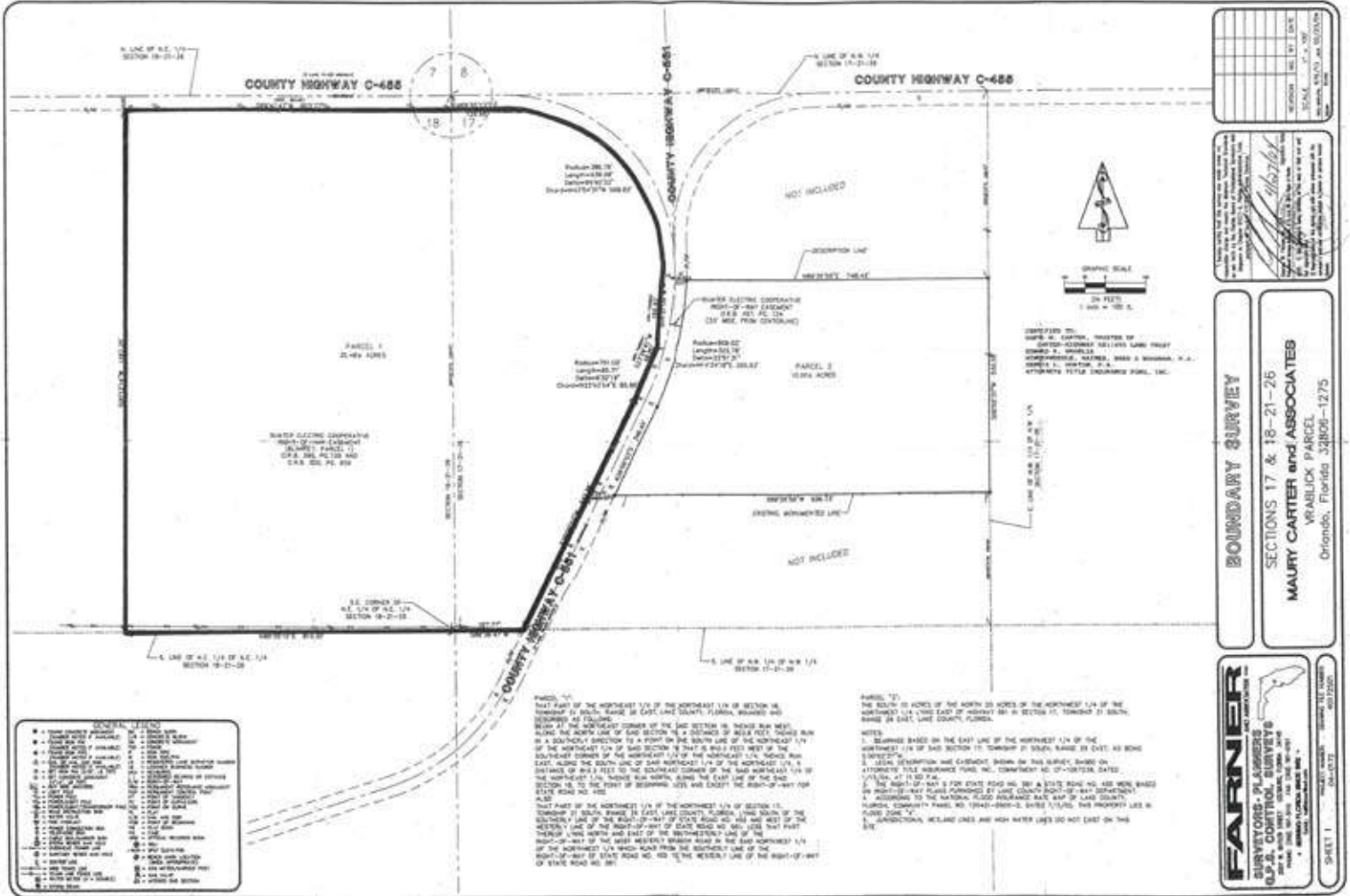
— Commercial Real Estate Investments | Management | Brokerage | Development | Land

Maury L. Carter & Associates, Inc.
407-422-3144 | www.maurycarter.com



PRIME DEVELOPMENT 35 ± ACRES

Hwys 561 & 455
Lake County, FL



— Commercial Real Estate Investments | Management | Brokerage | Development | Land

Maury L. Carter & Associates, Inc.
407-422-3144 | www.maurycarter.com

