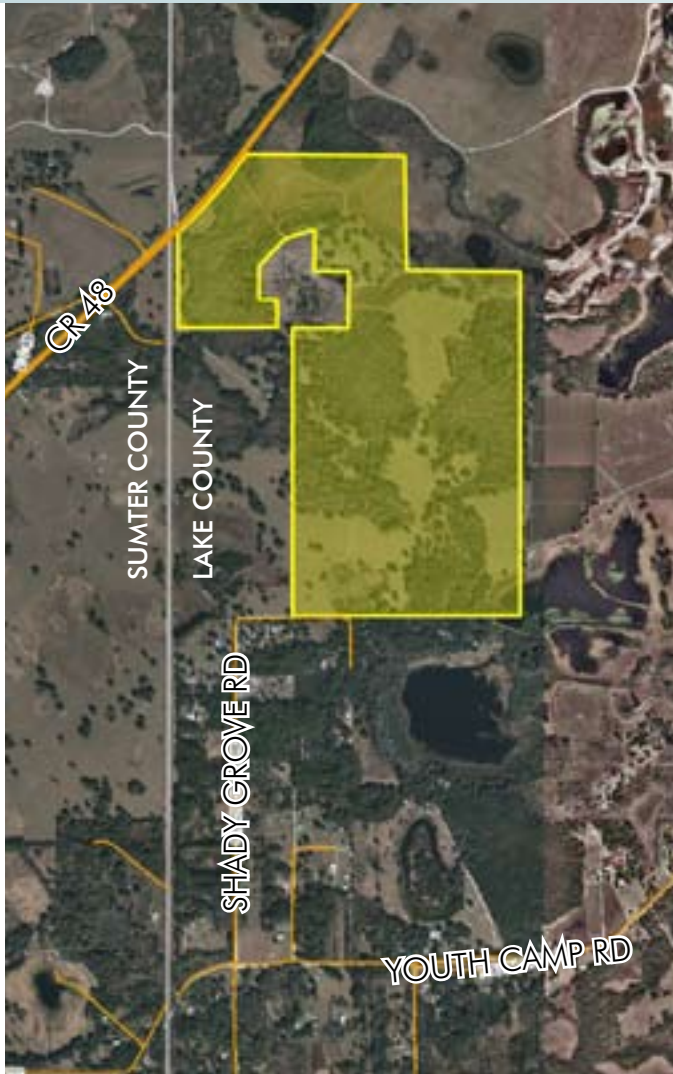


# LAND FOR SALE ON CR 48

314± acres

Leesburg, Lake County, FL



## LOCATION

Located on the south side of County Road 48, approximately one mile north of N. Austin Merritt Road, in the City of Leesburg. The western most boundary of the property is the Lake-Sumter County line.

## SIZE

314± acres

## PRICE

\$3,000,000 (\$9,554.14/acre)

## ZONING

AG - 1 unit per 5 gross acres (City of Leesburg)

## FUTURE LAND USE

Rural - 1 unit per 5 gross acres (City of Leesburg)

## ROAD FRONTAGE

1,200'± on County Road 48

Offering subject to errors, omission, prior sale or withdrawal without notice.

LAND FOR SALE

— Commercial Real Estate Investments | Management | Brokerage | Development | Land

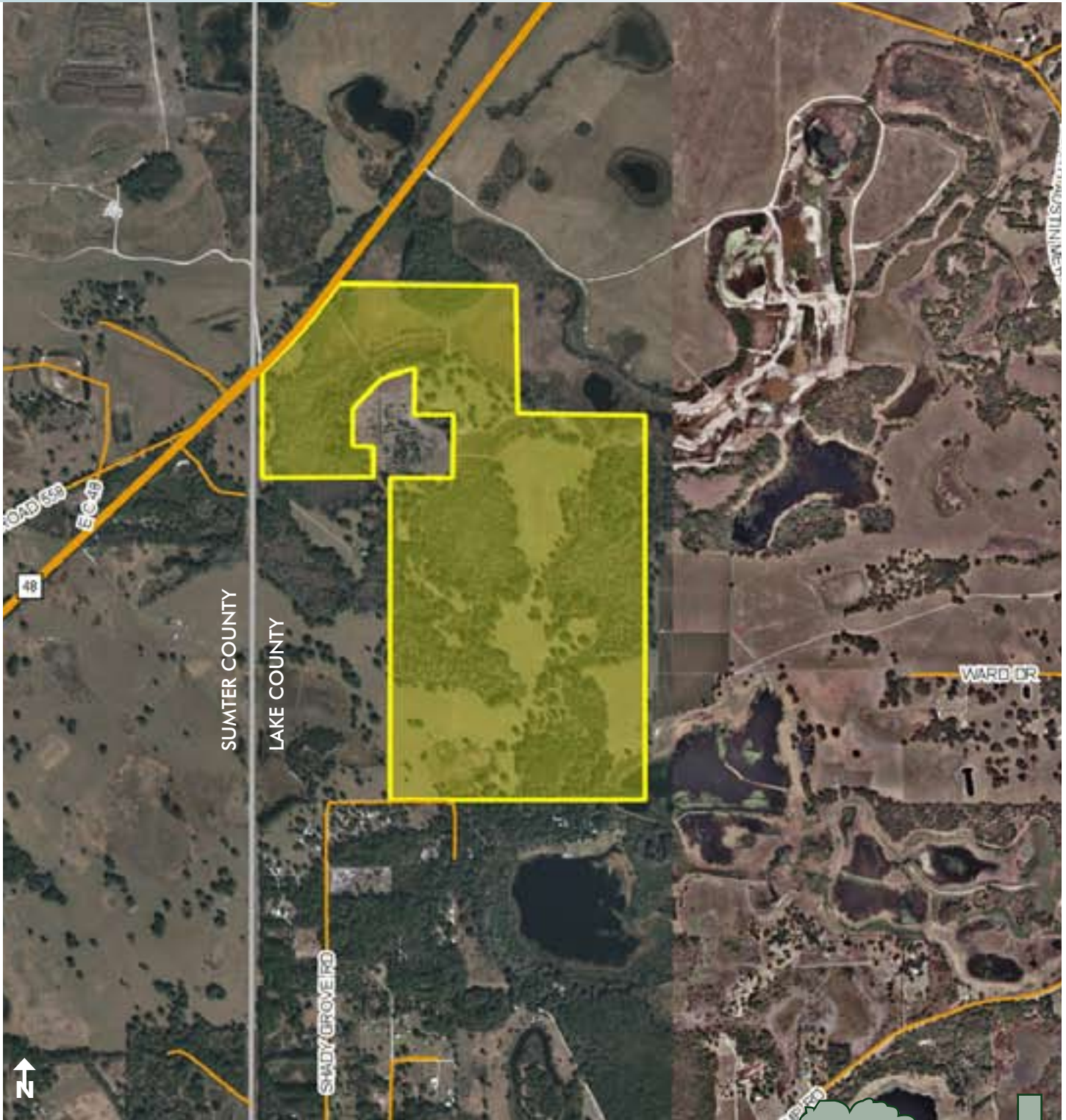
Maury L. Carter & Associates, Inc.  
407-422-3144 | [www.maurycarter.com](http://www.maurycarter.com)



# LAND FOR SALE ON CR 48

314± acres

Leesburg, Lake County, FL



PROPERTY MAP

— Commercial Real Estate Investments | Management | Brokerage | Development | Land

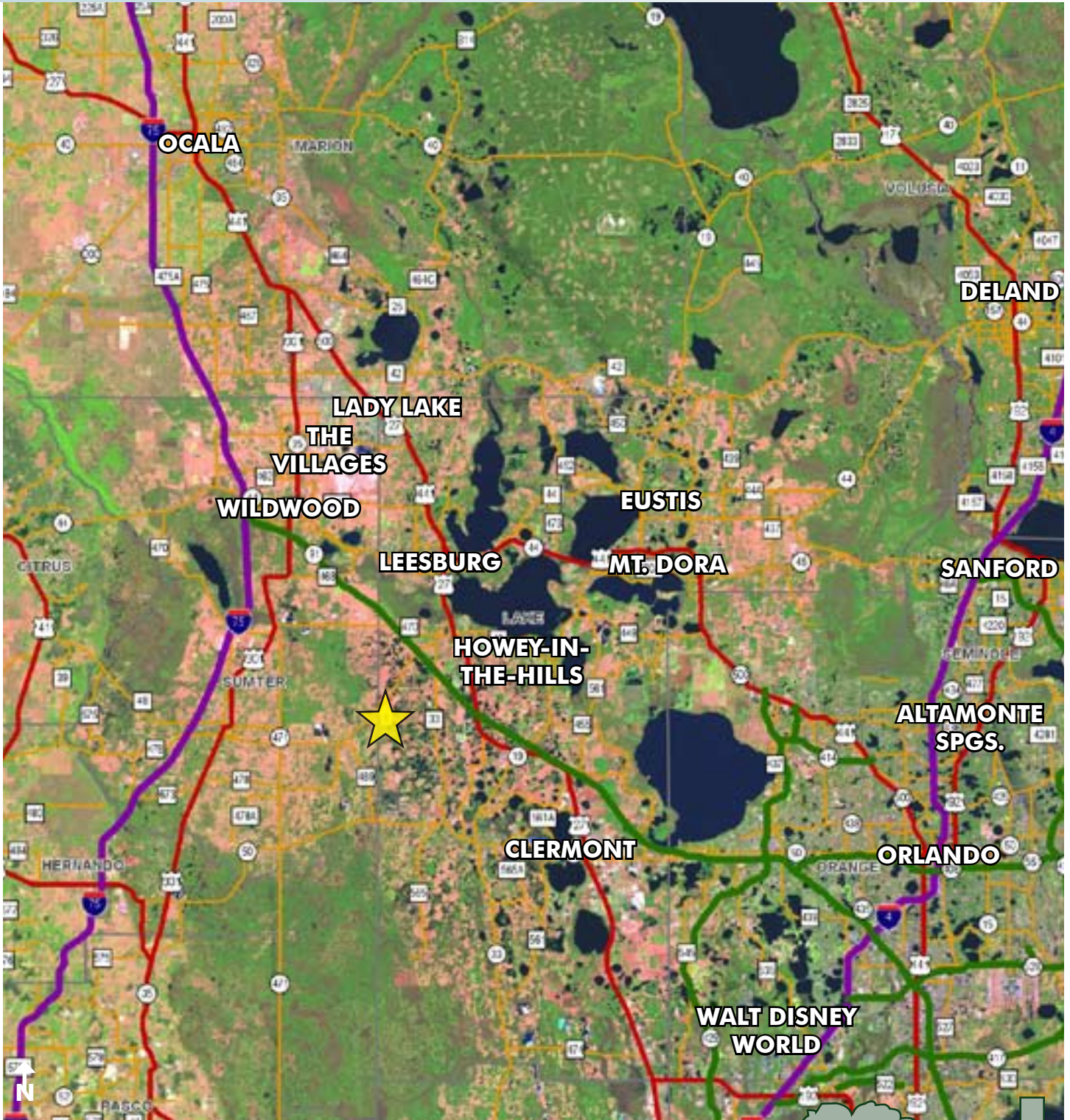
Maury L. Carter & Associates, Inc.  
407-422-3144 | [www.maurycarter.com](http://www.maurycarter.com)



# LAND FOR SALE ON CR 48

314± acres

Leesburg, Lake County, FL



LOCATION MAP

— Commercial Real Estate Investments | Management | Brokerage | Development | Land

Maury L. Carter & Associates, Inc.  
407-422-3144 | [www.maurycarter.com](http://www.maurycarter.com)



# LAND FOR SALE ON CR 48

314± acres

Leesburg, Lake County, FL



— Commercial Real Estate Investments | Management | Brokerage | Development | Land

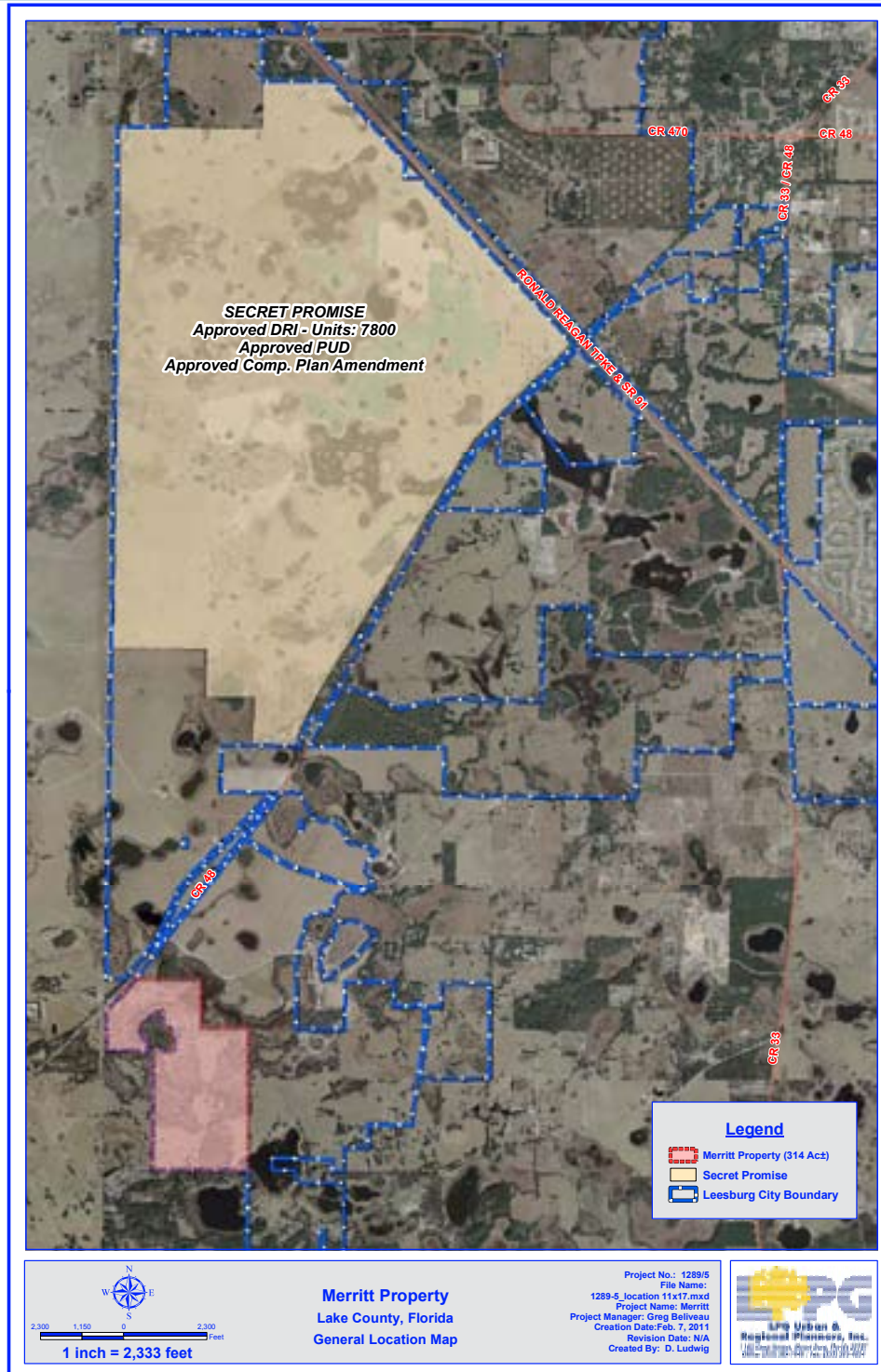
Maury L. Carter & Associates, Inc.  
407-422-3144 | [www.maurycarter.com](http://www.maurycarter.com)



# LAND FOR SALE ON CR 48

314± acres

Leesburg, Lake County, FL



— Commercial Real Estate Investments | Management | Brokerage | Development | Land

Maury L. Carter & Associates, Inc.  
407-422-3144 | [www.maurycarter.com](http://www.maurycarter.com)

