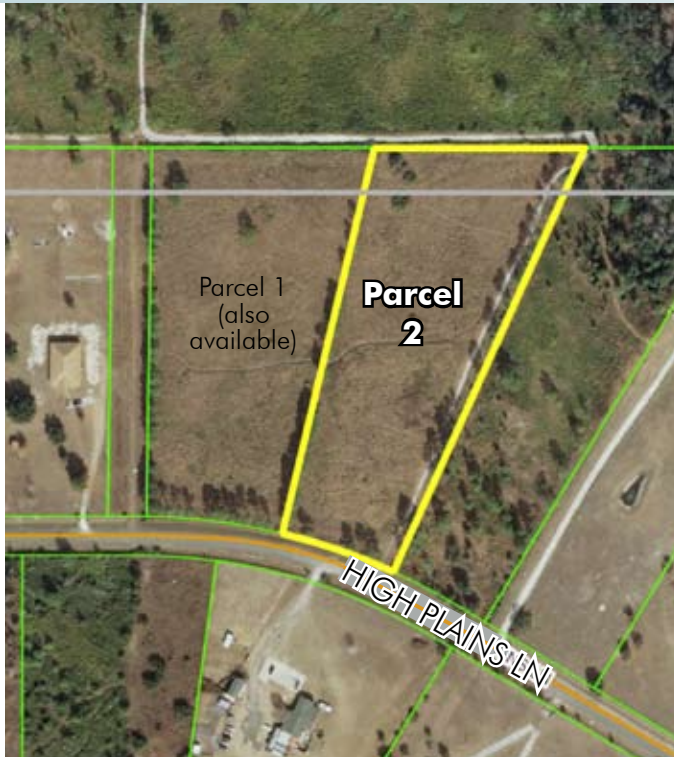


MEDICAL CITY/LAKE NONA AREA

5± acres (Parcel 2)
Osceola County, FL

LAND FOR SALE



LOCATION/DESCRIPTION

Good access to Medical City and Lake Nona area, just west of Boggy Creek Road in Osceola County. Property recently mowed and has southerly exposure on a hard surface road just off Boggy Creek Road. Adjoining lot also available.

SIZE

5± acres

PRICE

\$299,000

ZONING

AC (1 du/acre). Horses permitted

ROAD FRONTAGE

211'± on High Plains Lane

PARCEL ID

01 25 30 3308 0001 0050

Offering subject to errors, omission, prior sale or withdrawal without notice.



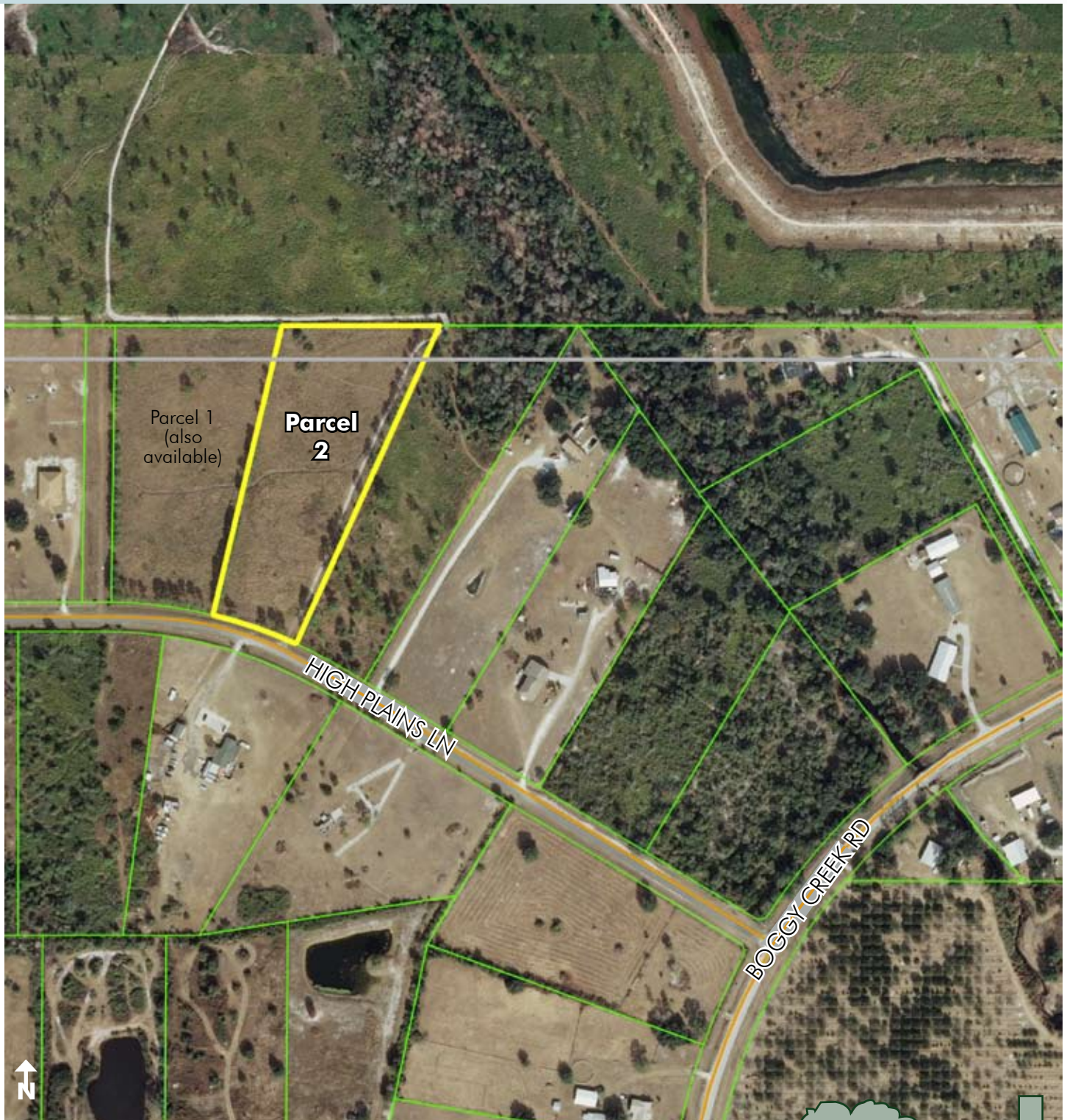
— Commercial Real Estate Investments | Management | Brokerage | Development | Land —

Maury L. Carter & Associates, Inc.
407-422-3144 | www.maurycarter.com



MEDICAL CITY/LAKE NONA AREA

5± acres (Parcel 2)
Osceola County, FL



PROPERTY MAP

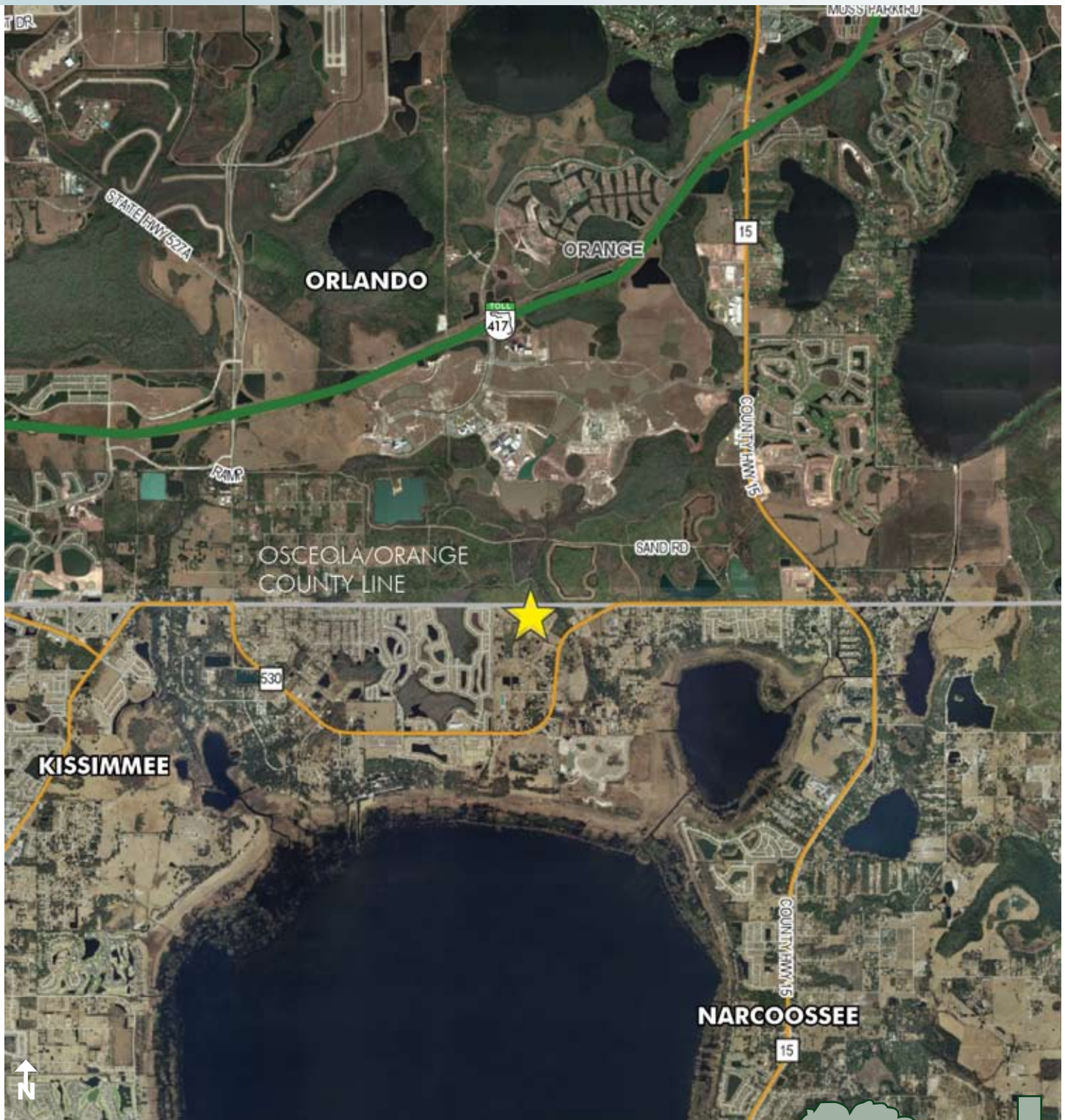
— Commercial Real Estate Investments | Management | Brokerage | Development | Land —

Maury L. Carter & Associates, Inc.
407-422-3144 | www.maurycarter.com



MEDICAL CITY/LAKE NONA AREA

5± acres (Parcel 2)
Osceola County, FL



LOCATION MAP

— Commercial Real Estate Investments | Management | Brokerage | Development | Land

Maury L. Carter & Associates, Inc.
407-422-3144 | www.maurycarter.com

