

HICKORY TREE RD

7.4± acres

Osceola County, FL



LOCATION/DESCRIPTION

The site is located the west side of Hickory Tree Road approx. ½ mile south of US 192 within unincorporated Osceola County. This area is within the epicenter of growth in Osceola County with the recent approval of major Low Density Residential projects totalling a potential of 5,000 to 15,000 units just to the south.

SIZE

7.4± acres

PRICE

\$1,000,000

ZONING

I-G, Industrial. FLU is Low Density Residential.

ROAD FRONTAGE

675 +/- feet on the west side of Hickory Tree Road.

UTILITIES

City of St. Cloud.

Offering subject to errors, omission, prior sale or withdrawal without notice.

LAND FOR SALE

— Commercial Real Estate Investments | Management | Brokerage | Development | Land

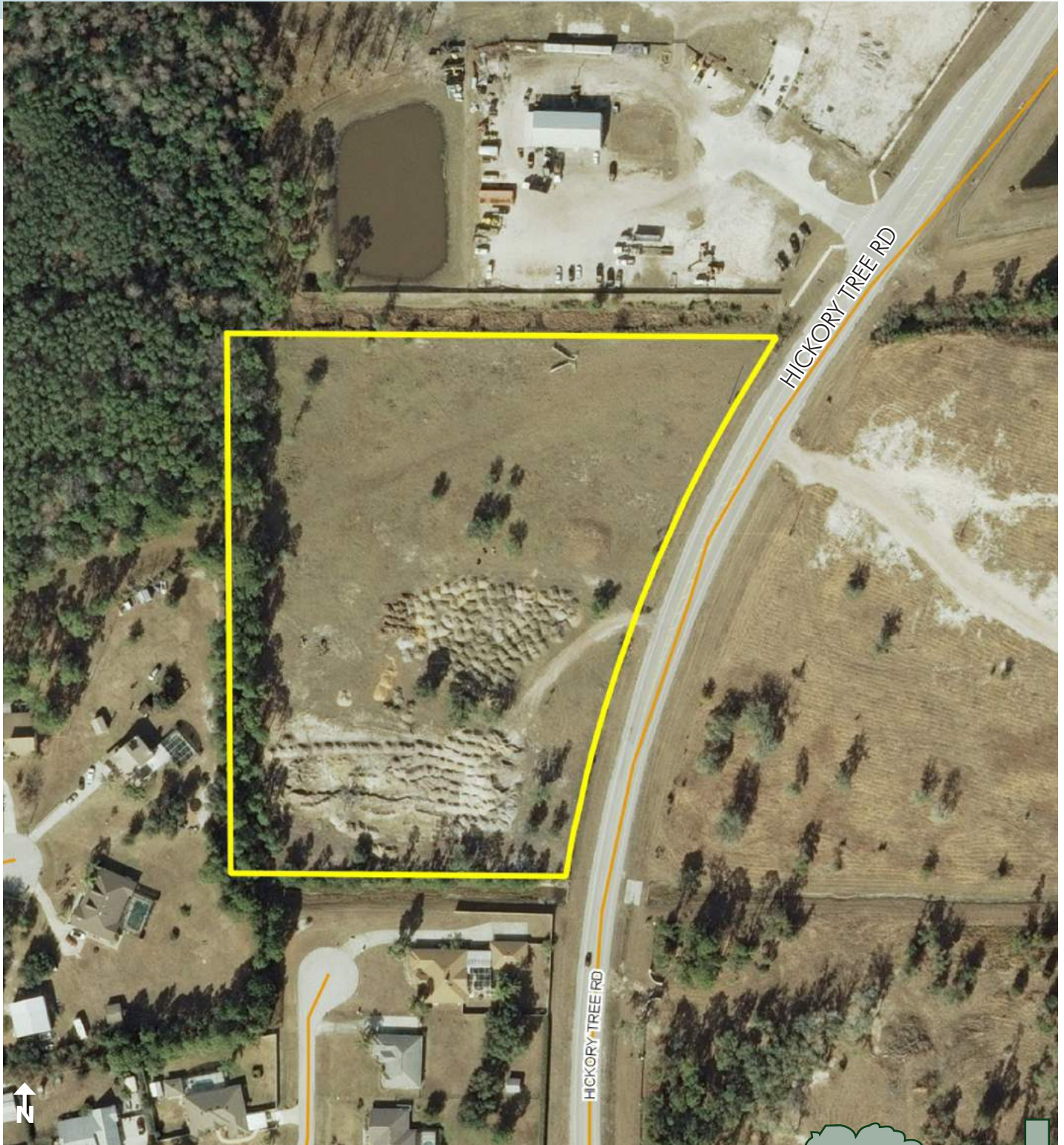
Maury L. Carter & Associates, Inc.
407-422-3144 | www.maurycarter.com



HICKORY TREE RD

7.4± acres

Osceola County, FL



PROPERTY MAP

— Commercial Real Estate Investments | Management | Brokerage | Development | Land —

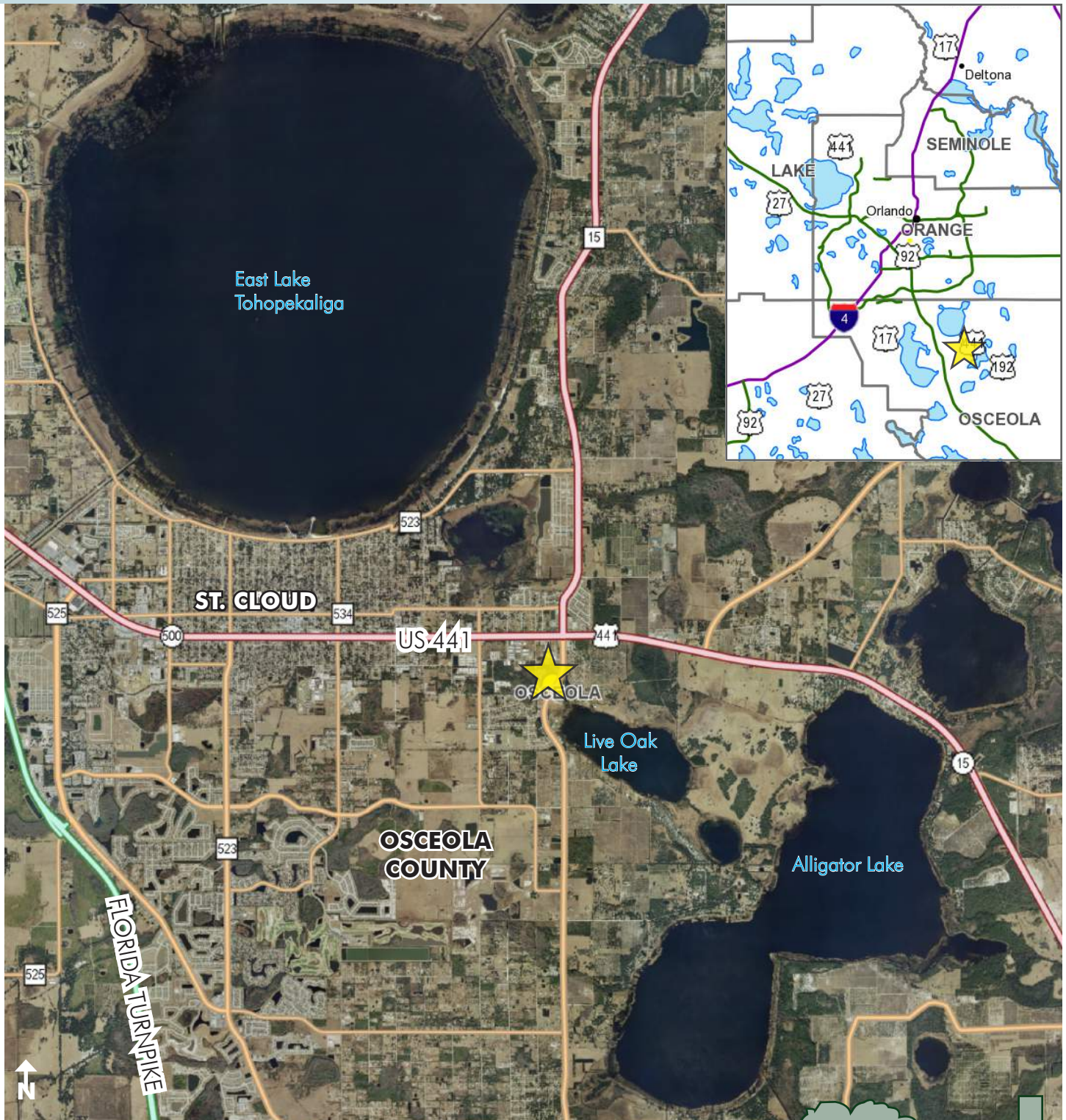
Maury L. Carter & Associates, Inc.
407-422-3144 | www.maurycarter.com



HICKORY TREE RD

7.4± acres

Osceola County, FL



LOCATION MAP

— Commercial Real Estate Investments | Management | Brokerage | Development | Land

Maury L. Carter & Associates, Inc.
407-422-3144 | www.maurycarter.com



Hickory Tree Road Projects

I:\Project\Warehouse\SIC_Narcoossee_Varehouse\Location\Hickory Tree Development\Hickory Tree Development\Applications.mxd

