

BUCKHEAD FARMS

211.57± acres
Hamilton County, FL



TURN-KEY FARMING/HUNTING OPERATION

Live, hunt, farm, ranch, manage wildlife, relax and enjoy beautiful open spaces at Buckhead Farms. This is a great opportunity for those looking to make incredible memories. This property was designed and laid out in a perfect manner, with a home/lodge, barn, deer handling facilities, guest cabin, shooting houses and more.

LICENSED GAME PRESERVE & IMPROVED PASTURE

The current owner bought, designed, built and managed this property as a game preserve. Nearly 160± herd of trophy whitetail currently live within the fences of the preserve. More than just a licensed hunting preserve, the current owner also operates this farm as a cattle ranch/hay operation. High quality cross fencing has been recently installed throughout the interior of the property. The current owner also runs a black angus herd inside the farm, with Perennial Peanut and Coastal Bermuda grasses available for feed.



— Commercial Real Estate Investments | Management | Brokerage | Development | Land

Maury L. Carter & Associates, Inc.
407-422-3144 | www.maurycarter.com



BUCKHEAD FARMS

211.57± acres
Hamilton County, FL



LOCATION

Located in Hamilton County, Florida at 3208 NW 29th Lane, Jennings, FL 32053. Easy access from I-75 (only 7± miles west of I-75 interchange).

SIZE

211.57± acres

PRICE

\$1,200,000 – This opportunity won't last long, bring offers! Deer herd included based upon offer.

ZONING/FUTURE LAND USE

AG-4

FENCING

3.2 miles of 8' high "game fence" border fencing

WELLS

1 - 4" well located on the property

DESCRIPTION

Deer, cattle, timber and hay - Buckhead Farms is a diverse and supremely managed farm. This property is perfect for an outdoorsman/woman who wants to have an abundant amount of wildlife on their farm. Nearly 160± head of trophy quality whitetail call Buckhead Farms home. The owner has operated this farm as a licensed hunting preserve, with the entire perimeter high fenced. At times this property has had whitetail, stag, axis deer and other exotics. Call this property home, or use it as a hunting getaway. This property is scattered with oak hammocks and pine stands.

Offering subject to errors, omission, prior sale or withdrawal without notice.

LAND FOR SALE

— Commercial Real Estate Investments | Management | Brokerage | Development | Land

Maury L. Carter & Associates, Inc.
407-422-3144 | www.maurycarter.com



Maury L. Carter & Associates, Inc.SM
Licensed Real Estate Broker

BUCKHEAD FARMS

211.57± acres
Hamilton County, FL

HIGH FENCED LICENSED HUNTING PRESERVE

The current owner of Buckhead Farms bought, designed, built and managed this property as a licensed high fence game preserve. Currently nearly 160± head of trophy whitetail live within the fences of this preserve. In addition to those 160± head of whitetail, there are 6± Axis deer on the farm. Owner has bought, bred, and managed this herd for well over ten years. Paying hunters come from all over the United States to participate in the harvest. Monster bucks live on this property. See pictures included on this page to view the quality of deer available on the property. Whitetail season on game preserves last from September to March.

TIMBER/BLEUBERRIES

The property was recently "plantation cut". The property is a Certified Tree Farm. Owner has a small blueberry patch on site.



All deer shown here were harvested on Buckhead Farms



— Commercial Real Estate Investments | Management | Brokerage | Development | Land

Maury L. Carter & Associates, Inc.
407-422-3144 | www.maurycarter.com



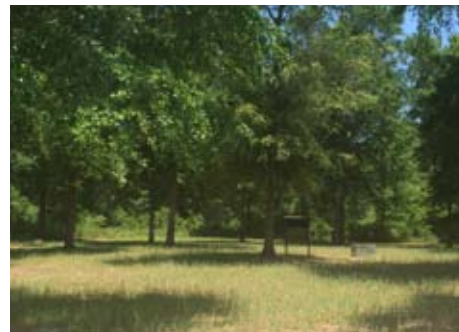
BUCKHEAD FARMS

211.57± acres
Hamilton County, FL

STRUCTURES:

There are multiple structures on the property including:

- 3 bed/3 full bath home/lodge with full kitchen, large living room
- Large barn/shop with drive-thru bays
- Deer handling facilities: breeding house, pens (6), chutes, etc.
- Guest cabin
- 6 shooting houses – 4 large shooting houses, 2 tower houses



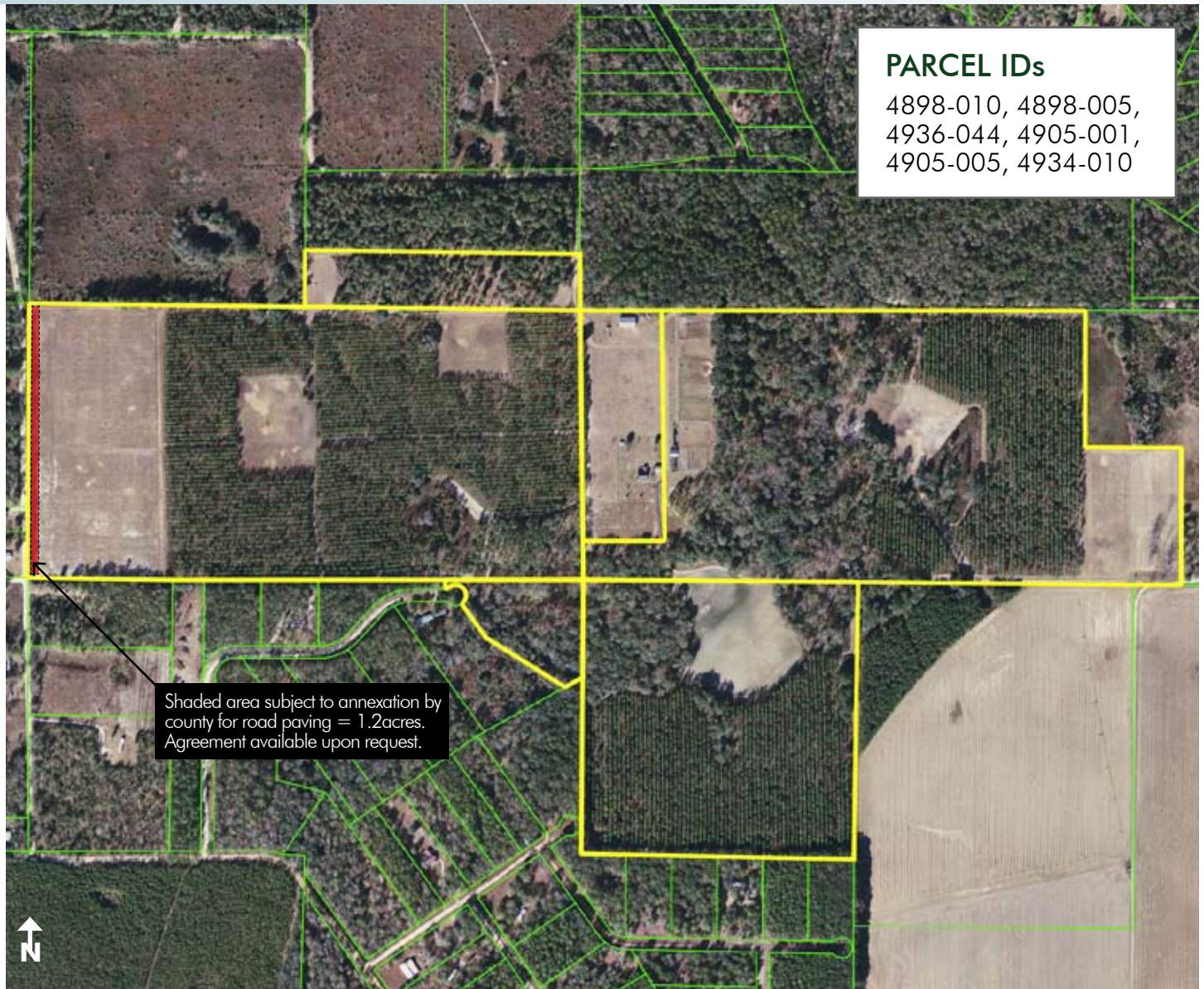
— Commercial Real Estate Investments | Management | Brokerage | Development | Land

Maury L. Carter & Associates, Inc.
407-422-3144 | www.maurycarter.com



BUCKHEAD FARMS

211.57± acres
Hamilton County, FL



PROPERTY MAP

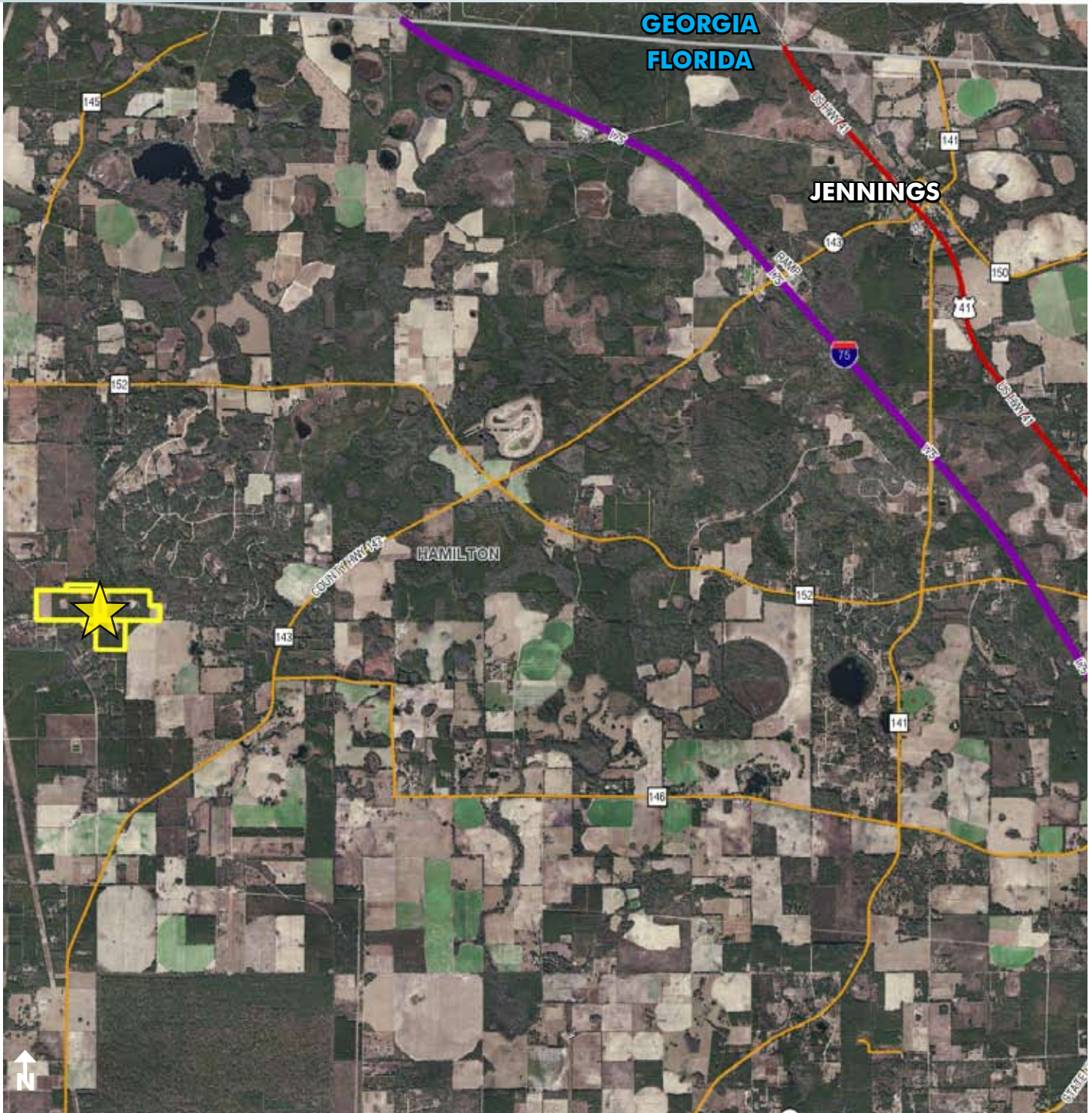
— Commercial Real Estate Investments | Management | Brokerage | Development | Land

Maury L. Carter & Associates, Inc.
407-422-3144 | www.maurycarter.com



BUCKHEAD FARMS

211.57± acres
Hamilton County, FL



REGIONAL MAP

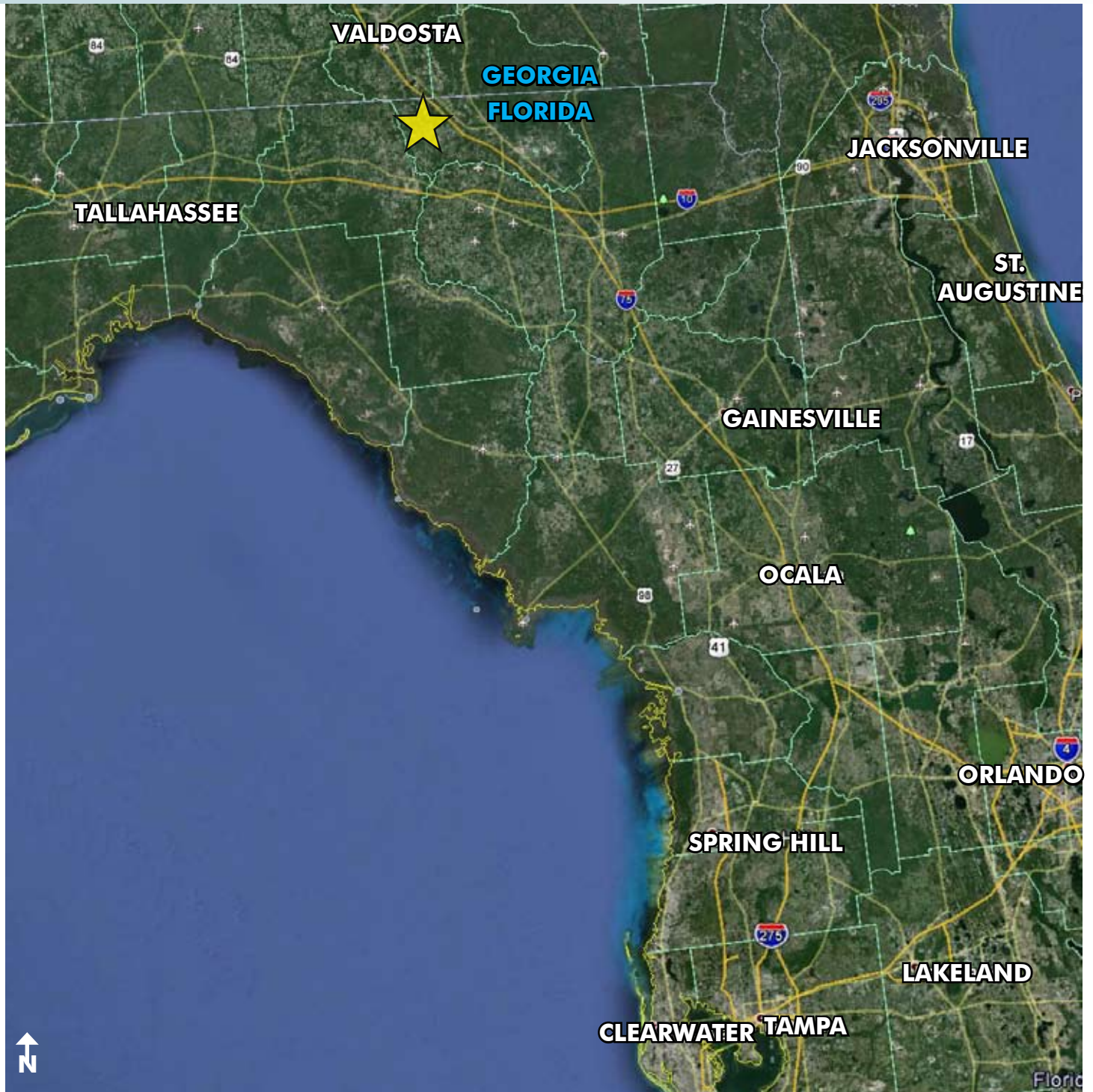
— Commercial Real Estate Investments | Management | Brokerage | Development | Land

Maury L. Carter & Associates, Inc.
407-422-3144 | www.maurycarter.com



BUCKHEAD FARMS

211.57± acres
Hamilton County, FL



LOCATION MAP

— Commercial Real Estate Investments | Management | Brokerage | Development | Land

Maury L. Carter & Associates, Inc.
407-422-3144 | www.maurycarter.com

