

# HWY 561 & HWY 455

10± acres

Lake County, FL

**SOLD!**

LAND FOR SALE



## LOCATION

The property is located on the east side of Highway 561 approximately 400 ft ± south of Highway 455.

## SIZE

10± acres

## PRICE

\$150,000 or \$15,000 per acre

## ZONING

Agricultural/ Future Land Use is Rural

## ROAD FRONTAGE

569'± on County Highway 561

## DESCRIPTION

Zoned Agricultural. Fast growing area near the busy intersection of County Hwy 455. Located on the east side of Hwy 561, approximately 400 ft ± south of Hwy 455.

Offering subject to errors, omission, prior sale or withdrawal without notice.

— Commercial Real Estate Investments | Management | Brokerage | Development | Land —

Maury L. Carter & Associates, Inc.  
407-422-3144 | [www.maurycarter.com](http://www.maurycarter.com)



# HWY 561 & HWY 455

10± acres

Lake County, FL

**SOLD!**



PROPERTY MAP

— Commercial Real Estate Investments | Management | Brokerage | Development | Land —

Maury L. Carter & Associates, Inc.

407-422-3144 | [www.maurycarter.com](http://www.maurycarter.com)

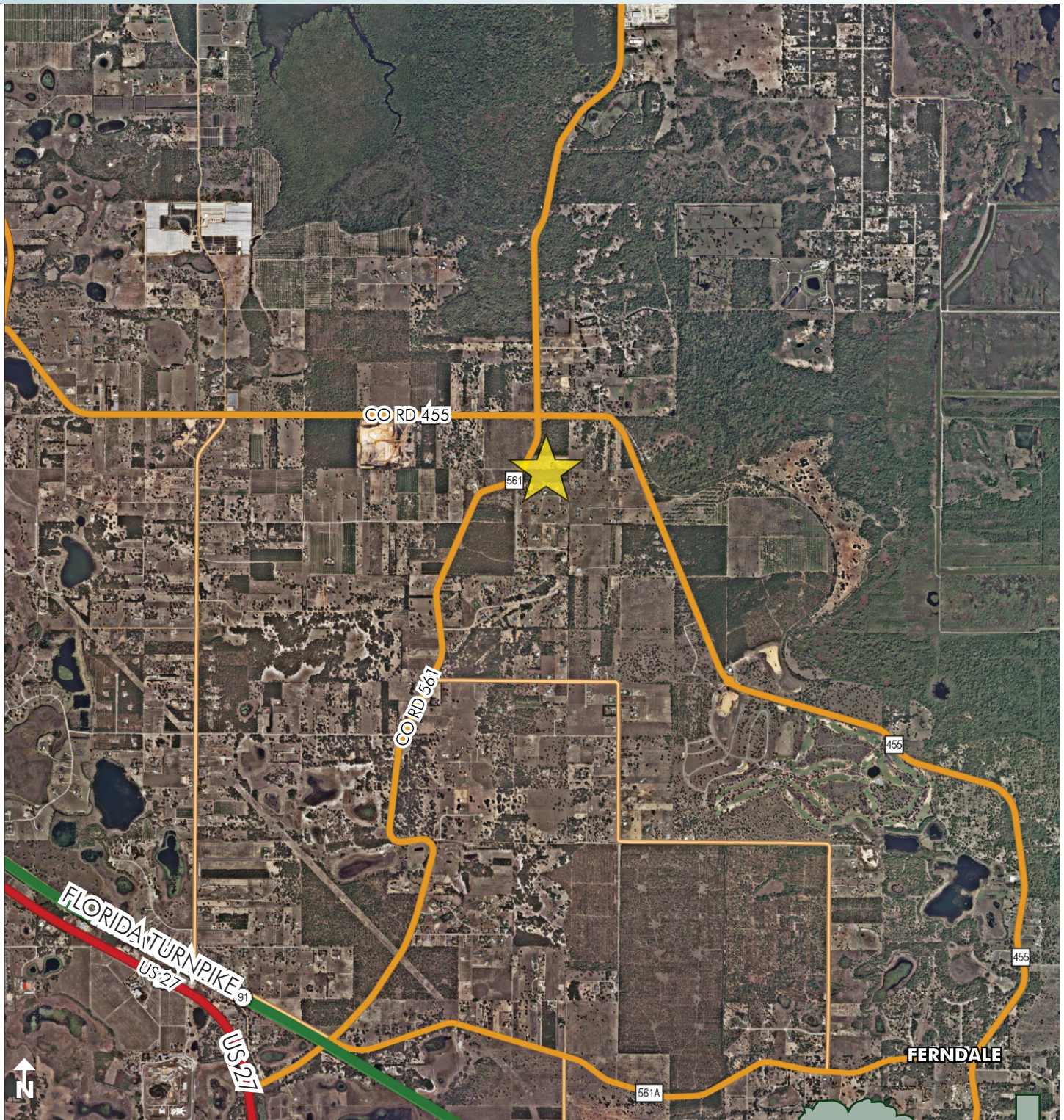


# HWY 561 & HWY 455

10± acres

Lake County, FL

**SOLD!**



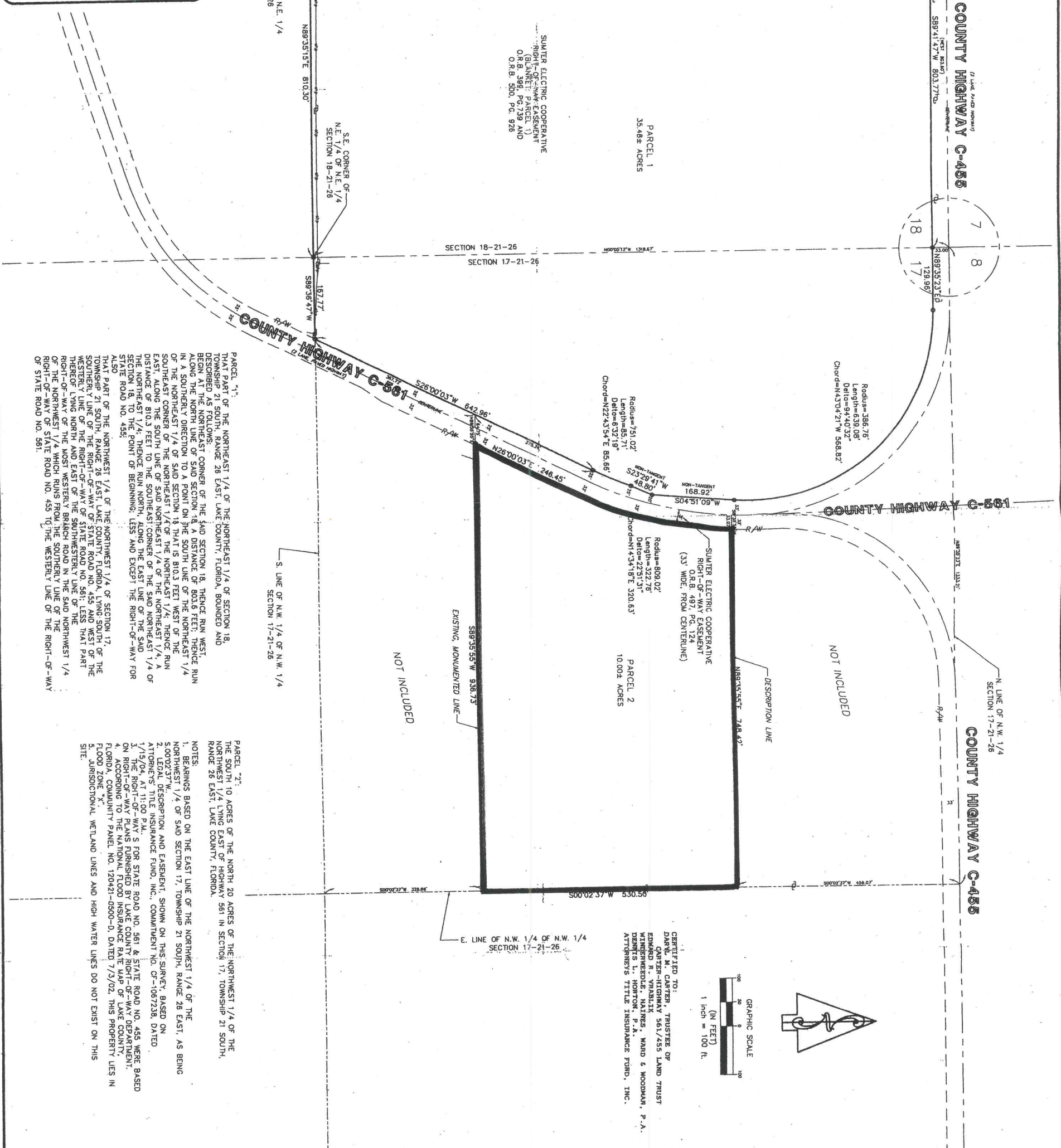
REGIONAL MAP

— Commercial Real Estate Investments | Management | Brokerage | Development | Land —

Maury L. Carter & Associates, Inc.

407-422-3144 | [www.maurycarter.com](http://www.maurycarter.com)





SHEET 1

PROJECT NUMBER: 04-0172      DRAWING FILE NUMBER: 40172S01

SECTIONS 17 & 18-21-26  
MAURY CARTER and ASSOCIATES

VRABLICK PARCEL  
Orlando, Florida 32806-1275

George W. Farnsworth  
Professional Surveyor & Engineer, P.S., E.N.G., No. 3811, State of Florida

4157604

Signature Date

NOTE: 1) This platting is being certified to the date of field work and not signature date.  
2) Reproductions of this sketch not valid unless embossed with the surveyor's seal and certification limited to person or persons named hereon.

REVISION	NO.	BY	DATE
SCALE		1" = 100'	
FIELD BOOK/PL	876/13	DATE	02/23/04
DRAWN	KHN		