

ORLANDO INT'L AIRPORT/MEDICAL CITY AREA

10.1 ± acres
Orlando, FL

LAND FOR SALE



LOCATION

South Orlando, north of Lake Nona/
Medical City and 2 miles
north of Orlando International Airport
which welcomed approx. 35.71 million
air passengers in 2014.
Located on the west side of Narcoossee
Rd, just over 5 min from SR 417 and SR
528.

SIZE

10.1 ± acres

PRICE

\$1,850,000

ZONING

Commercial.

MARKET OVERVIEW

Tremendous economic growth can be
expected for this region as Lake Nona/
Medical City continues to develop and
generate jobs.

- Four major medical/research facilities
have been built in the last 5 years, with a
VA Medical Center expected for 2015.
- 47,500 new jobs in Orlando in 2014,
a 4.3% increase in employment from the
previous year.
- Unemployment rate down to 5% at the
end of 2014, lowest in over 6 years.
- Residential sales for Orlando 10%
higher in Jan 2015 than Jan 2014.

Offering subject to errors, omission, prior sale or
withdrawal without notice.

ROAD FRONTAGE

512' ± on Narcoossee Rd.

UTILITIES

City of Orlando.

PARCEL ID

23-23-30-6396-09-000

— Commercial Real Estate Investments | Management | Brokerage | Development | Land —

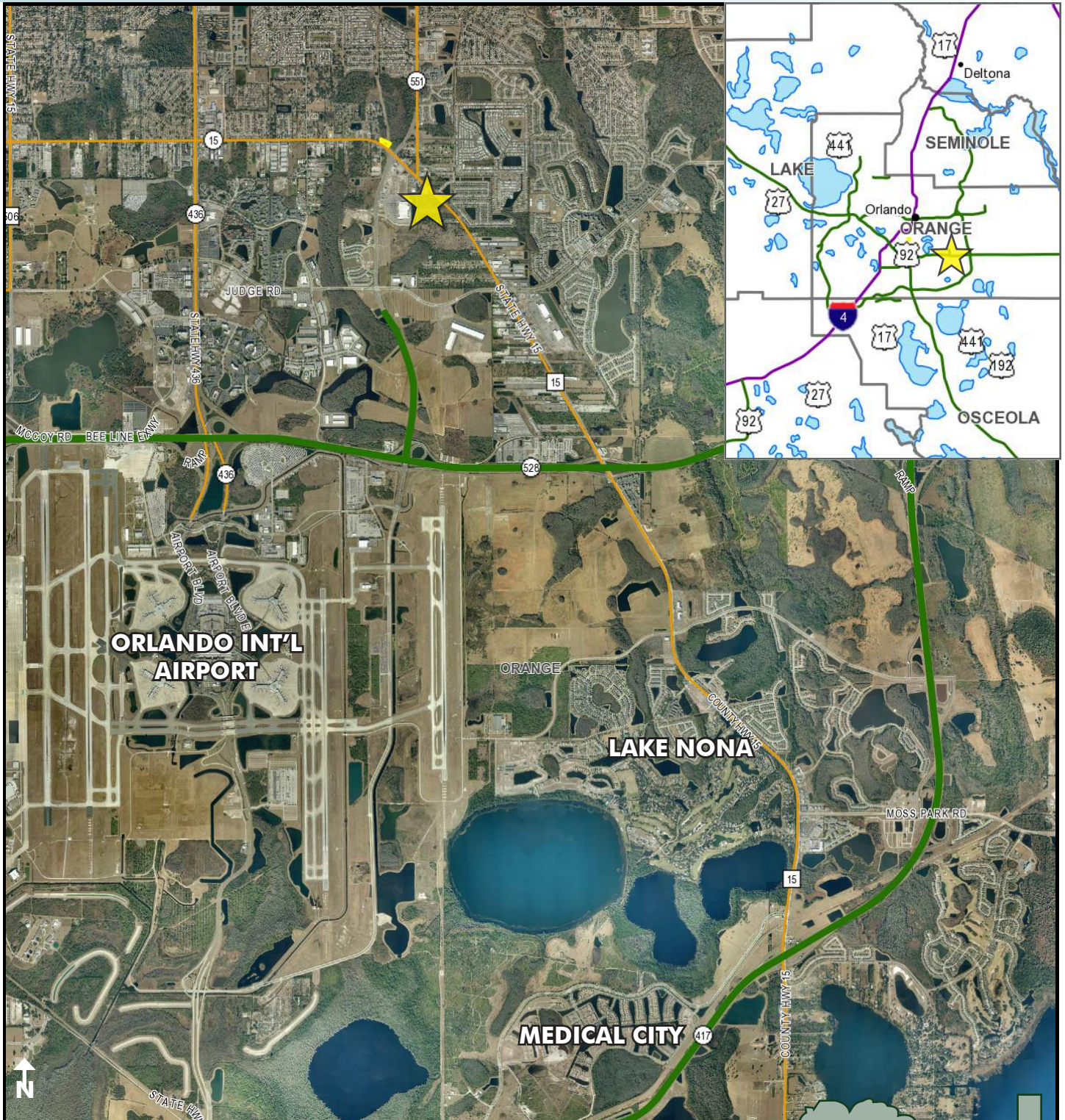
Maury L. Carter & Associates, Inc.
407-422-3144 | www.maurycarter.com



ORLANDO INT'L AIRPORT/MEDICAL CITY AREA

10.1 ± acres

Orange County, FL



PROPERTY MAP

— Commercial Real Estate Investments | Management | Brokerage | Development | Land

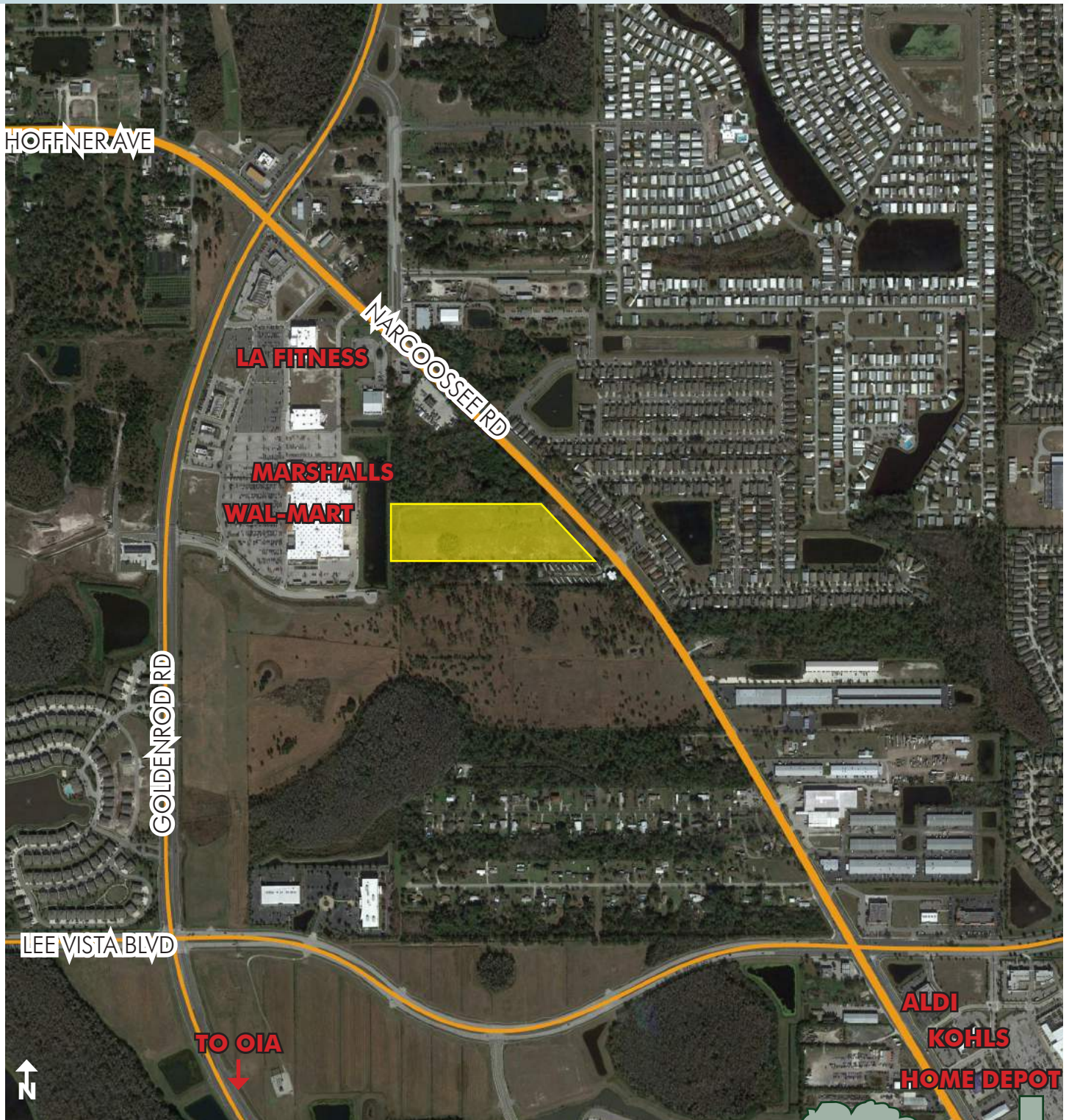
Maury L. Carter & Associates, Inc.
407-422-3144 | www.maurycarter.com



ORLANDO INT'L AIRPORT/MEDICAL CITY AREA

10.1 ± acres

Orange County, FL



LOCATION MAP

— Commercial Real Estate Investments | Management | Brokerage | Development | Land

Maury L. Carter & Associates, Inc.
407-422-3144 | www.maurycarter.com

