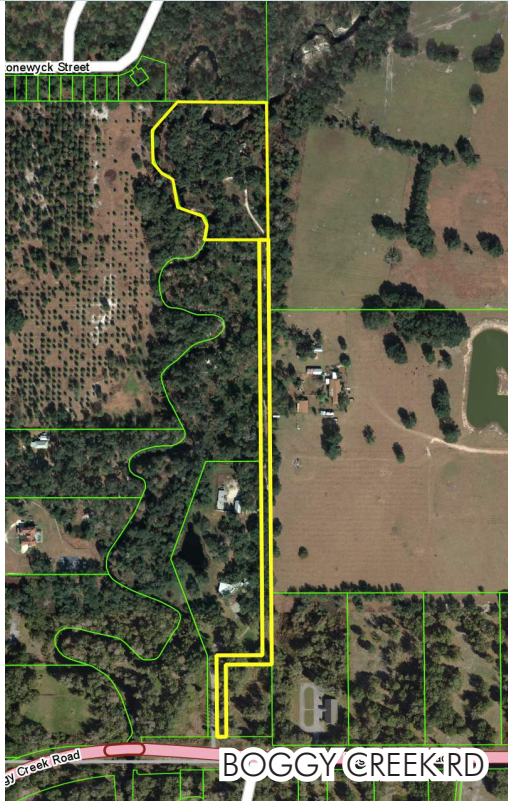


# BOGGY CREEK RD

7.81 ± acres

Orange County, FL



## LOCATION

Located on the north side of Simpson Rd (Boggy Creek Rd), in southeast Orange County. Immediate access to major roadways: Just 2 miles south of SR 417 (Central Florida Greenway) and 4 miles east of Florida's Turnpike.

## SIZE

7.81 ± acres

## PRICE

\$399,000

## ZONING

Agriculture.

## ROAD FRONTAGE

Access at Boggy Creek Rd.

## UTILITIES

Well and septic.

## DESCRIPTION

Quiet, secluded lot with single-family residence. Access to Boggy Creek on northern end of property and adjacent to Florida Hospital land on the eastern side. Located within 10 min of booming Lake Nona/ Medical City/ Orlando Int'l Airport area.

Offering subject to errors, omission, prior sale or withdrawal without notice.

LAND FOR SALE

— Commercial Real Estate Investments | Management | Brokerage | Development | Land —

Maury L. Carter & Associates, Inc.  
407-422-3144 | [www.maurycarter.com](http://www.maurycarter.com)

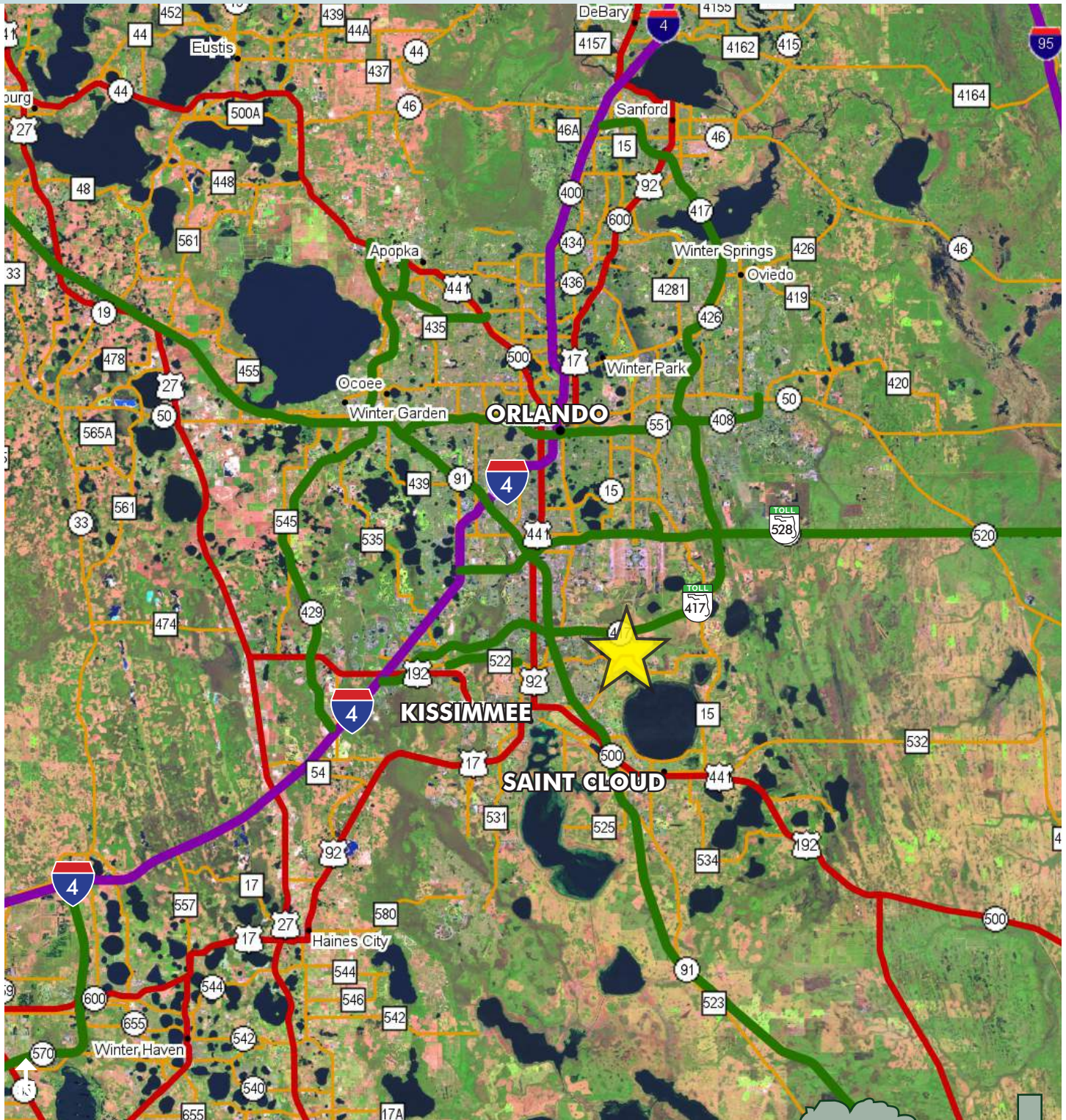


Maury L. Carter & Associates, Inc.<sup>SM</sup>  
Licensed Real Estate Broker

# BOGGY CREEK RD

7.81± acres

Orange County, FL



LOCATION MAP

— Commercial Real Estate Investments | Management | Brokerage | Development | Land

Maury L. Carter & Associates, Inc.

407-422-3144 | [www.maurycarter.com](http://www.maurycarter.com)



# BOGGY CREEK RD

7.81 ± acres

Orange County, FL



REGIONAL MAP

— Commercial Real Estate Investments | Management | Brokerage | Development | Land

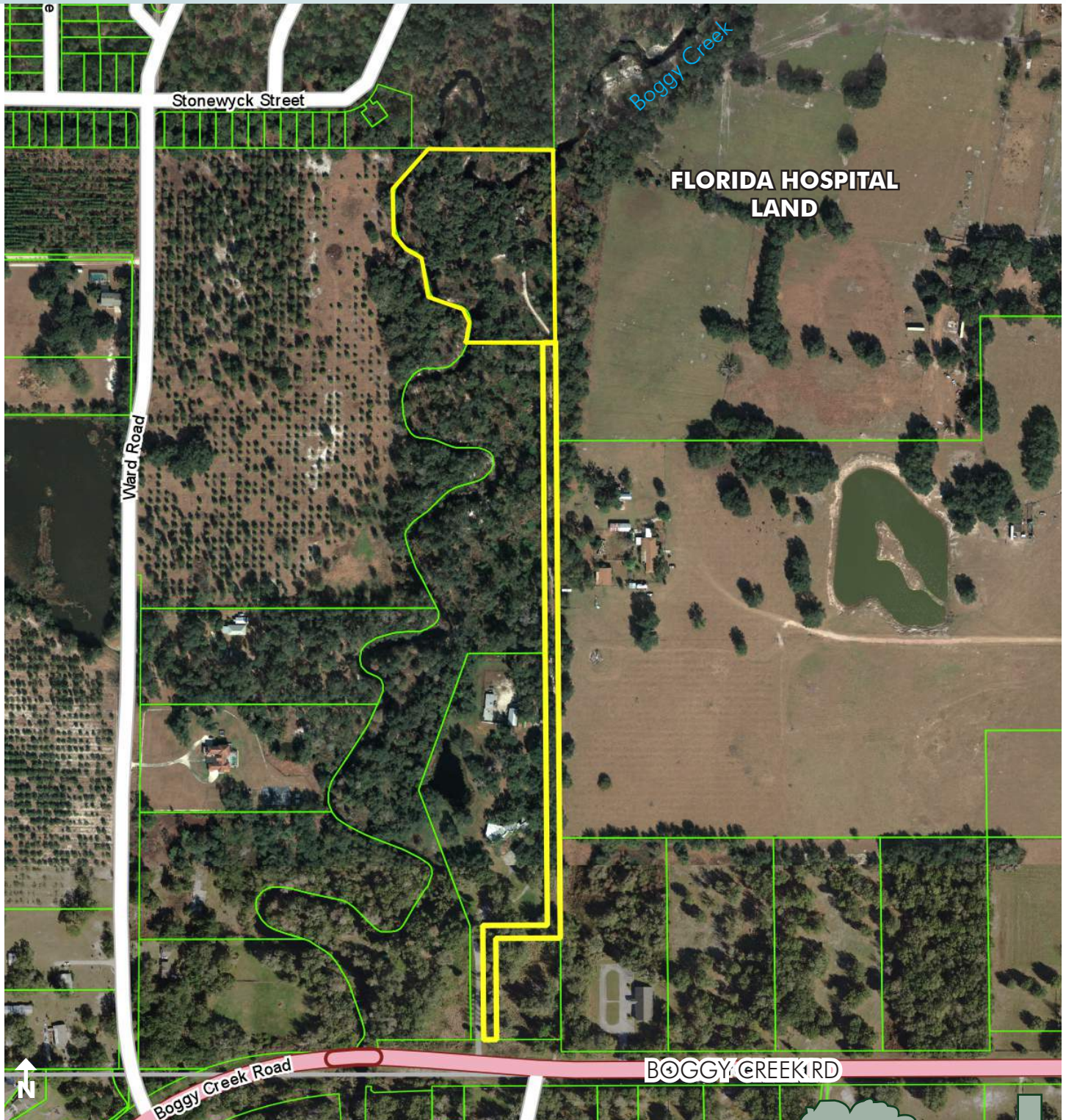
Maury L. Carter & Associates, Inc.  
407-422-3144 | [www.maurycarter.com](http://www.maurycarter.com)



# BOGGY CREEK RD

7.81 ± acres

Orange County, FL



PARCEL MAP

— Commercial Real Estate Investments | Management | Brokerage | Development | Land

Maury L. Carter & Associates, Inc.  
407-422-3144 | [www.maurycarter.com](http://www.maurycarter.com)

