

I-75 INTERCHANGE LAND

146± acres

Sumter County, FL



LOCATION

Located at the interchange at the NE corner of I-75 and Hwy 478 (CR 673).

SIZE

146± acres

PRICE

\$2,625,000 (\$17,500/ac)

REDUCED TO \$2,250,000 (\$15,410/ac)

ZONING/FUTURE LAND USE

10± acres along east side of I-75 at Hwy 478 (CR 673) zoned Commercial with FLU of Commercial. Remaining 136± acres zoned Agricultural with FLU of Agricultural.

ROAD FRONTAGE

1,600'± on Hwy 478 (CR 673)

2,345'± on I-75

Offering subject to errors, omission, prior sale or withdrawal without notice.

LAND FOR SALE

— Commercial Real Estate Investments | Management | Brokerage | Development | Land

Maury L. Carter & Associates, Inc.

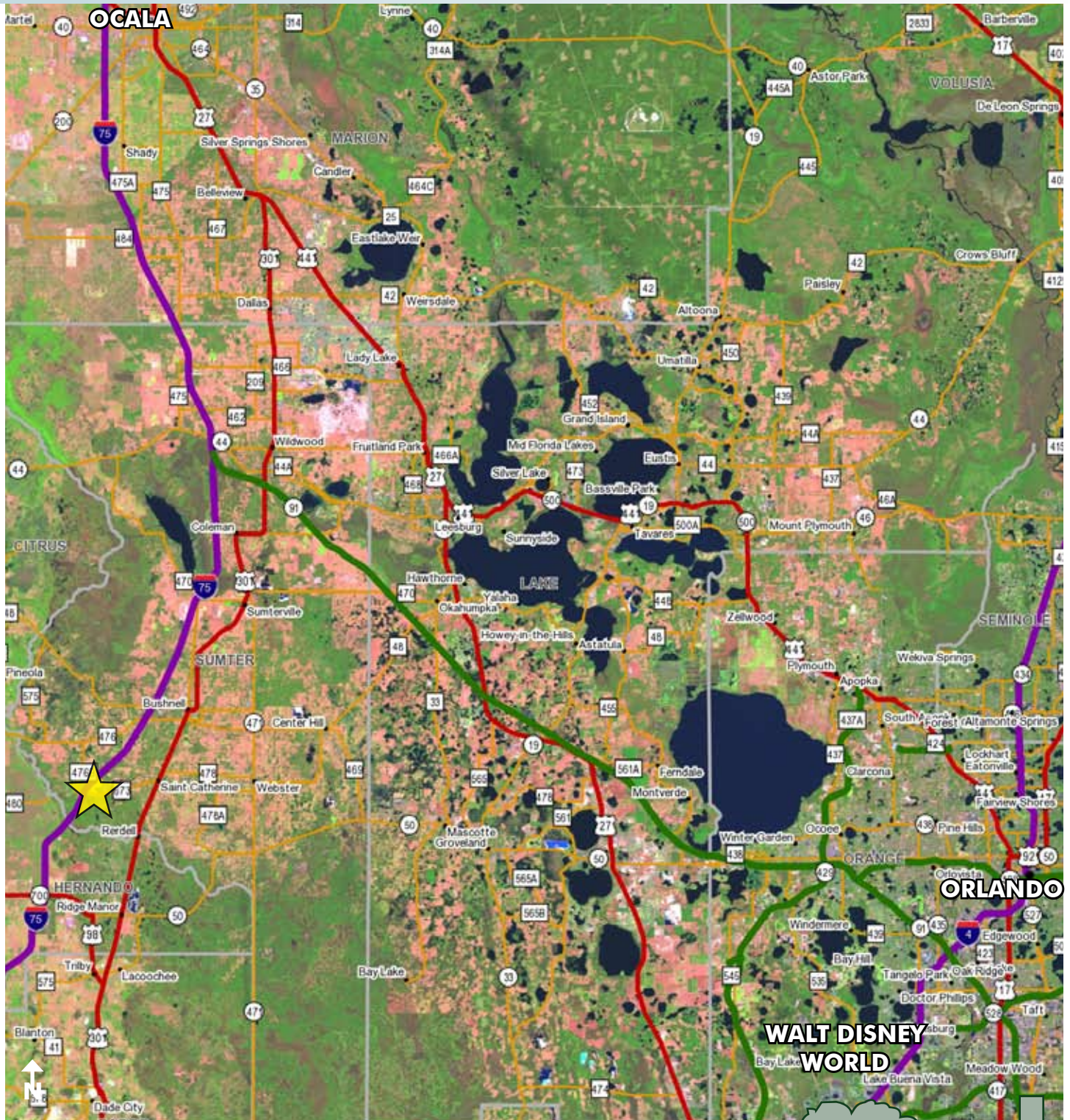
407-422-3144 | www.maurycarter.com



I-75 INTERCHANGE LAND

146± acres

Sumter County, FL



LOCATION MAP

— Commercial Real Estate Investments | Management | Brokerage | Development | Land

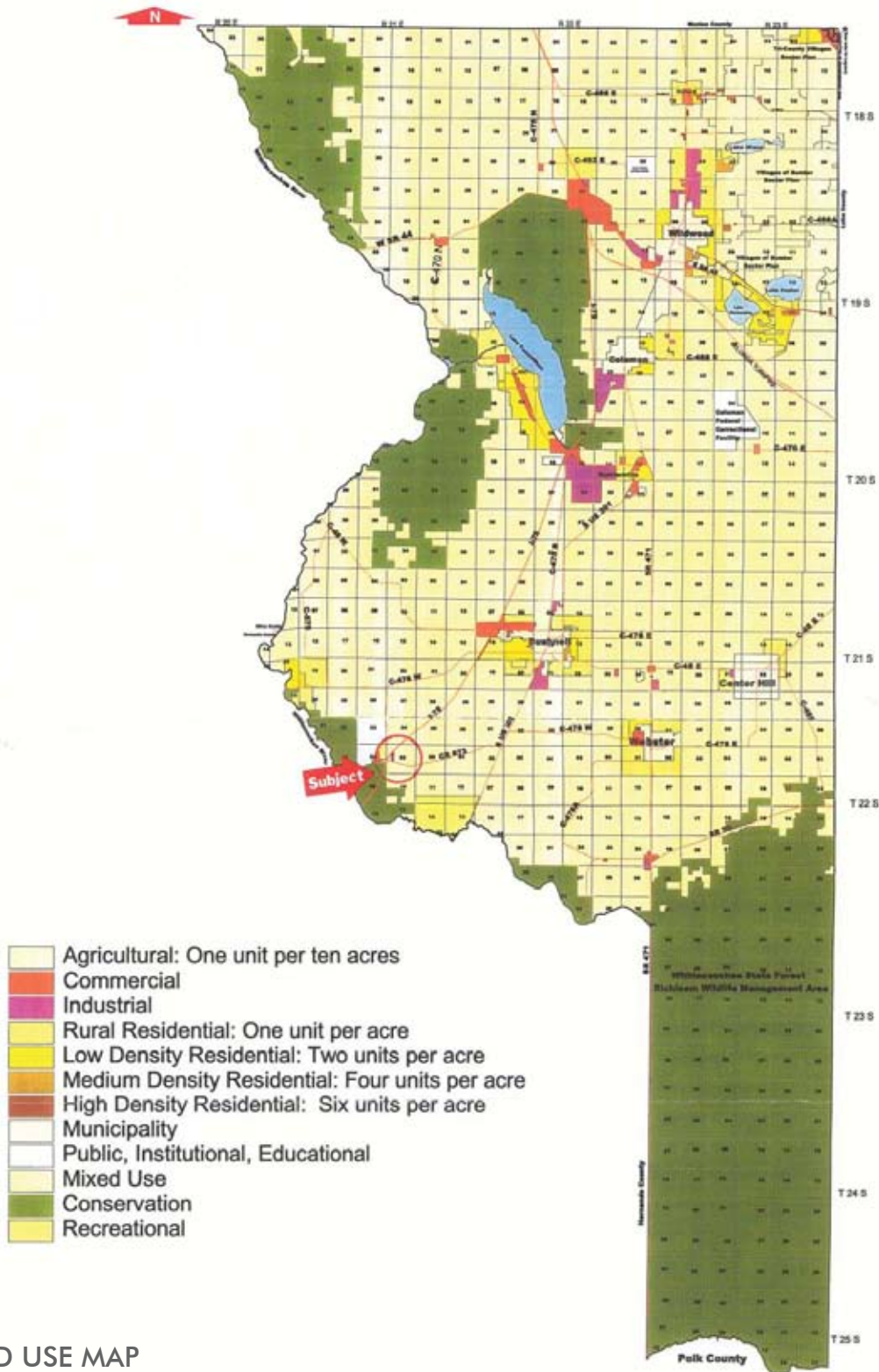
Maury L. Carter & Associates, Inc.
407-422-3144 | www.maurycarter.com



I-75 INTERCHANGE LAND

146± acres

Sumter County, FL



LAND USE MAP

— Commercial Real Estate Investments | Management | Brokerage | Development | Land

Maury L. Carter & Associates, Inc.
407-422-3144 | www.maurycarter.com



