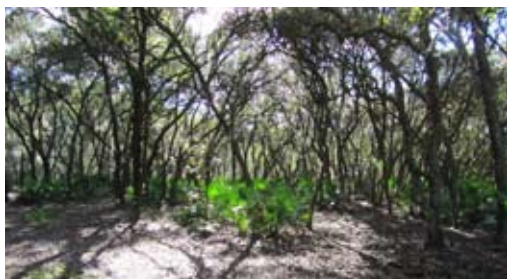


CENTER HILL RANCH

37.72± acres available (87.72± total acres)

Sumter County, FL



LOCATION

Located north of CR 558 and east of CR 577 in Center Hill, Sumter County, FL

SIZE

87.72± acres

PRICE OPTIONS

Option 1: 50± acres = **SOLD (9/10/15)**

Option 2: 37.72± acres = \$199,000

ZONING/FLU

Agricultural

STRUCTURES

Cattle pens (in good condition); border fenced and cross fenced

WATER

Two small watering ponds for livestock and two watering tanks in pastures

UTILITIES

Single phase, underground power available to site and well (1-4" well); septic would be required for home

DESCRIPTION

This property is perfect for a hobby farmer or rancher. Build a dream home overlooking wide open pastures. Gorgeous pine stands and oaks hammocks are located throughout the property.

PARCEL ID

Q12=075

Offering subject to errors, omission, prior sale or withdrawal without notice.

LAND FOR SALE

— Commercial Real Estate Investments | Management | Brokerage | Development | Land

Maury L. Carter & Associates, Inc.

407-422-3144 | www.maurycarter.com



Maury L. Carter & Associates, Inc.SM
Licensed Real Estate Broker

CENTER HILL RANCH

37.72± acres available (87.72± total acres)

Sumter County, FL



PROPERTY MAP

— Commercial Real Estate Investments | Management | Brokerage | Development | Land

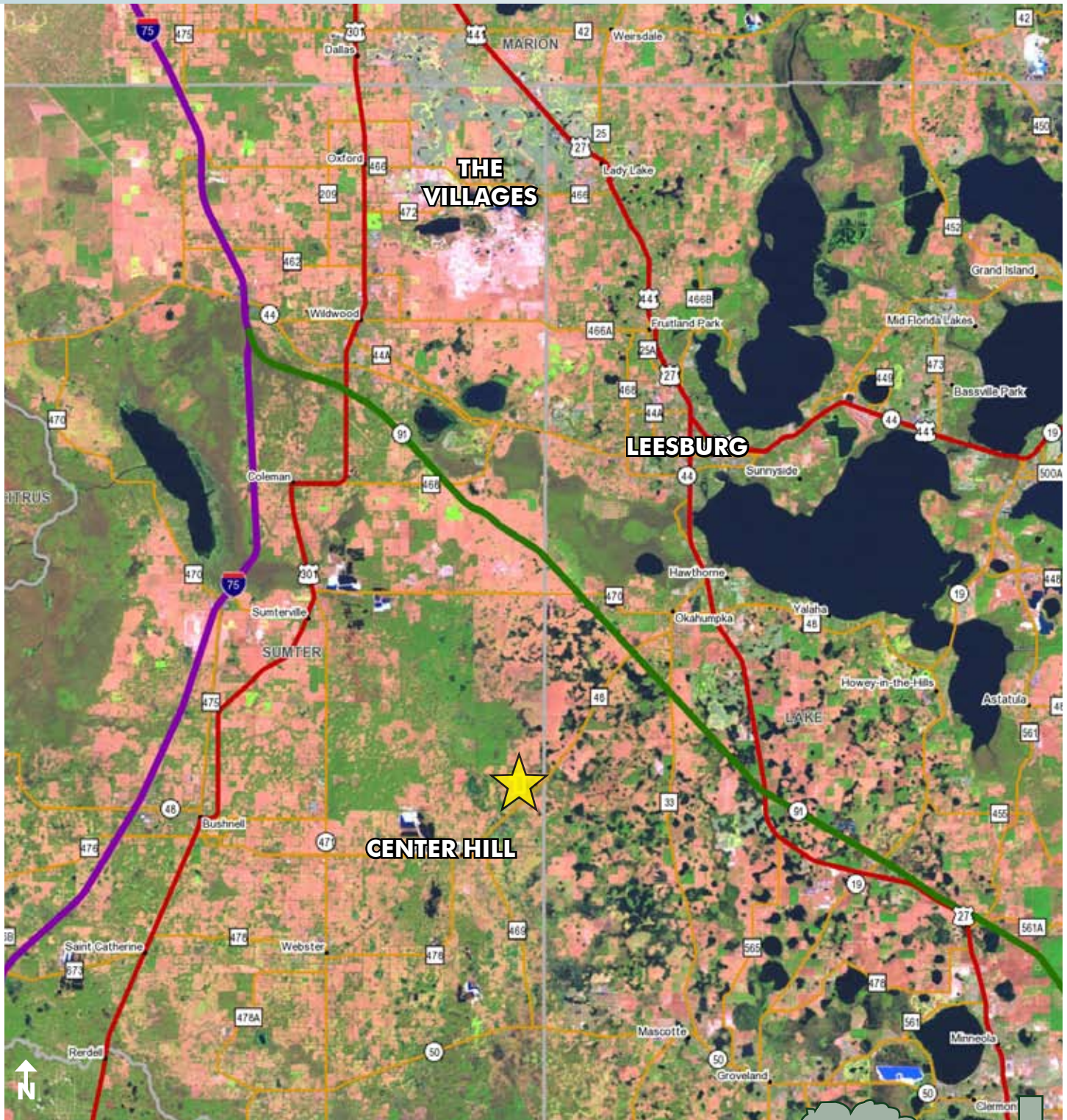
Maury L. Carter & Associates, Inc.
407-422-3144 | www.maurycarter.com



CENTER HILL RANCH

37.72± acres available (87.72± total acres)

Sumter County, FL



LOCATION MAP

— Commercial Real Estate Investments | Management | Brokerage | Development | Land

Maury L. Carter & Associates, Inc.

407-422-3144 | www.maurycarter.com

