

ANNO AVENUE

0.23± acres

Orange County, FL



LOCATION

Located approximately 1/4 mile west of Orange Avenue, just minutes from downtown Orlando and Sand Lake Rd.

SIZE

0.23± acres

PRICE

\$35,000

ZONING

C-1. Allows for duplex or triplex.

ROAD FRONTAGE

99' ± on Anno Ave. and 72' ± on Fairlane Ave.

UTILITIES

On site.

DESCRIPTION

Prime location, in close proximity to Orange Avenue and downtown Orlando. Great investment property.

Offering subject to errors, omission, prior sale or withdrawal without notice.

LAND FOR SALE

— Commercial Real Estate Investments | Management | Brokerage | Development | Land

Maury L. Carter & Associates, Inc.
407-422-3144 | www.maurycarter.com



ANNO AVENUE

0.23± acres

Orange County, FL



PROPERTY MAP

— Commercial Real Estate Investments | Management | Brokerage | Development | Land

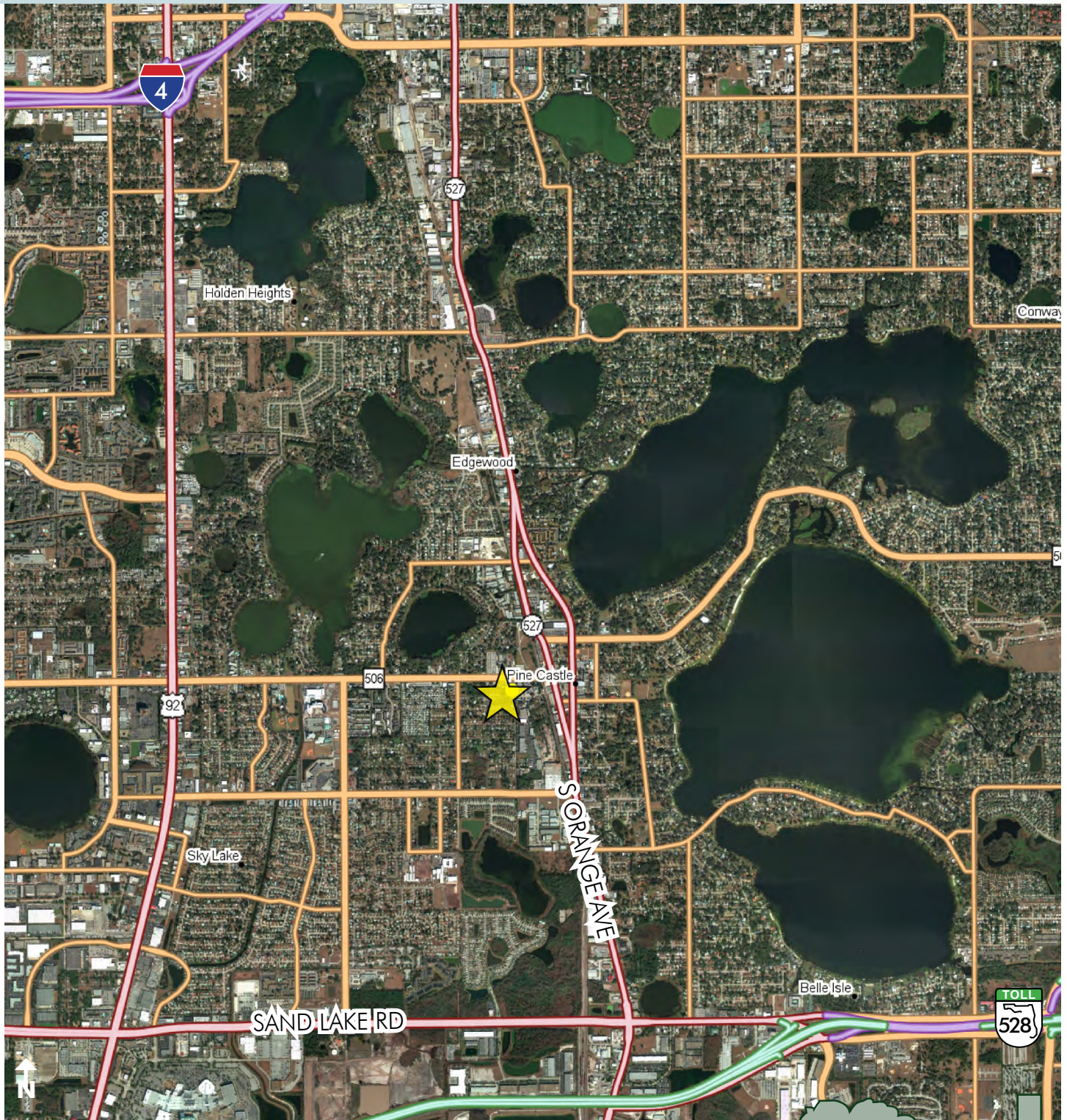
Maury L. Carter & Associates, Inc.
407-422-3144 | www.maurycarter.com



ANNO AVENUE

0.23± acres

Orange County, FL



REGIONAL MAP

— Commercial Real Estate Investments | Management | Brokerage | Development | Land

Maury L. Carter & Associates, Inc.
407-422-3144 | www.maurycarter.com



Maury L. Carter & Associates, Inc.SM
Licensed Real Estate Broker