

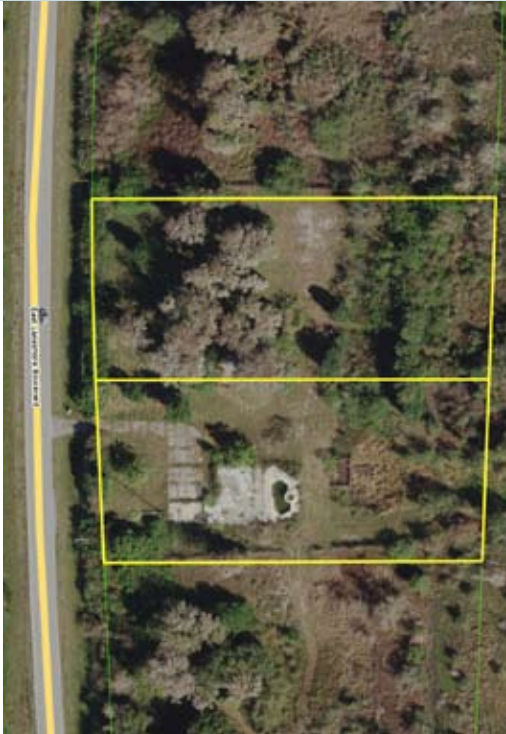
LAKEFRONT NEAR KISSIMMEE

2.34± acres

Osceola County, FL

**UNDER
CONTRACT**

LAND FOR SALE



LOCATION

Located on East Lake Shore Blvd, on the west side of East Lake Tohopekaliga in Osceola County. Immediate access to major roadways: 4± miles to Florida's Turnpike and just over 5 miles to Central Florida GreeneWay (SR 417).

SIZE

2.34± acres

PRICE

\$390,000 *UNDER CONTRACT*

ZONING/FUTURE LAND USE

RS-1 (Residential Single-Family). FLU: LDR

DESCRIPTION

Gorgeous lakefront property with large, majestic oak trees and palm trees. Property previously had an estate home with pool, dock and iron fence surrounding it. The house has been removed with some flat structure and the pool remaining. This property has a canal out to the lake with a partial dock onsite. Current permitting restriction make this property a gem with the direct access to East Lake and some of Florida's best bass fishing. An outstanding piece of Florida that is very rare to find.

This property is one of the most desirable lakefront properties in Osceola County. Frontage on Lakeshore Boulevard. Conveniently located between Kissimmee and St. Cloud and less than a mile to Kissimmee Bay and Remington Golf Courses. Within close proximity to the fast-growing Orlando Int'l Airport/Lake Nona/Medical City Area. Travel time is approximately 20 min.

If you are looking for the perfect location to build your estate home with plenty of open space, access to East Lake with your own private dock and golf within walking distances - this is your opportunity. Don't miss out on this awesome opportunity to own this prime piece of real estate.

Offering subject to errors, omission, prior sale or withdrawal without notice.

ROAD FRONTAGE

330'± on Lakeshore Boulevard
328'± on East Lake Tohopekaliga

UTILITIES

Buyer will need to install well and septic systems.

— Commercial Real Estate Investments | Management | Brokerage | Development | Land

Maury L. Carter & Associates, Inc.
407-422-3144 | www.maurycarter.com

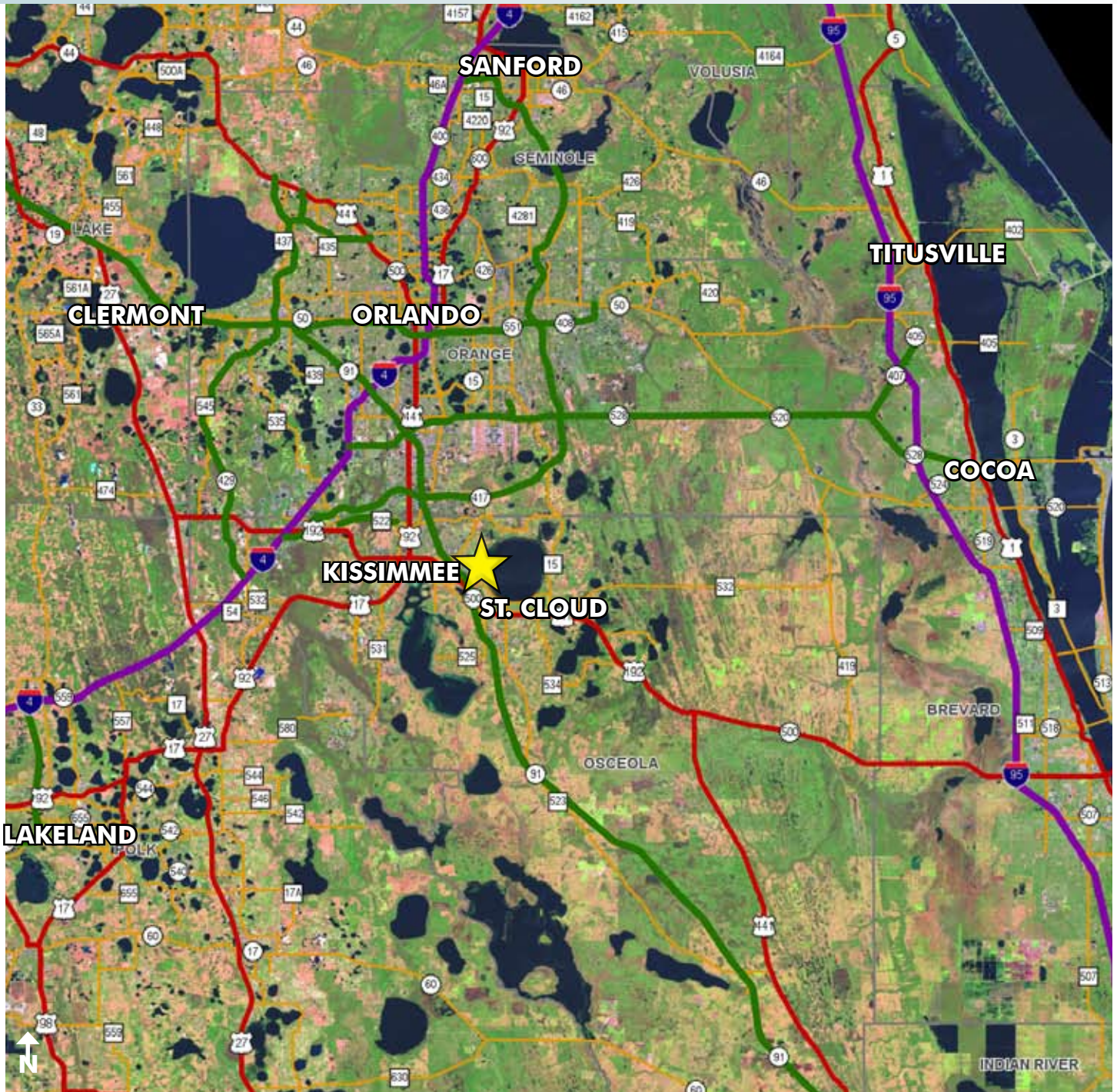


LAKEFRONT NEAR KISSIMMEE

2.34± acres

Osceola County, FL

**UNDER
CONTRACT**



LOCATION MAP

— Commercial Real Estate Investments | Management | Brokerage | Development | Land

Maury L. Carter & Associates, Inc.
407-422-3144 | www.maurycarter.com

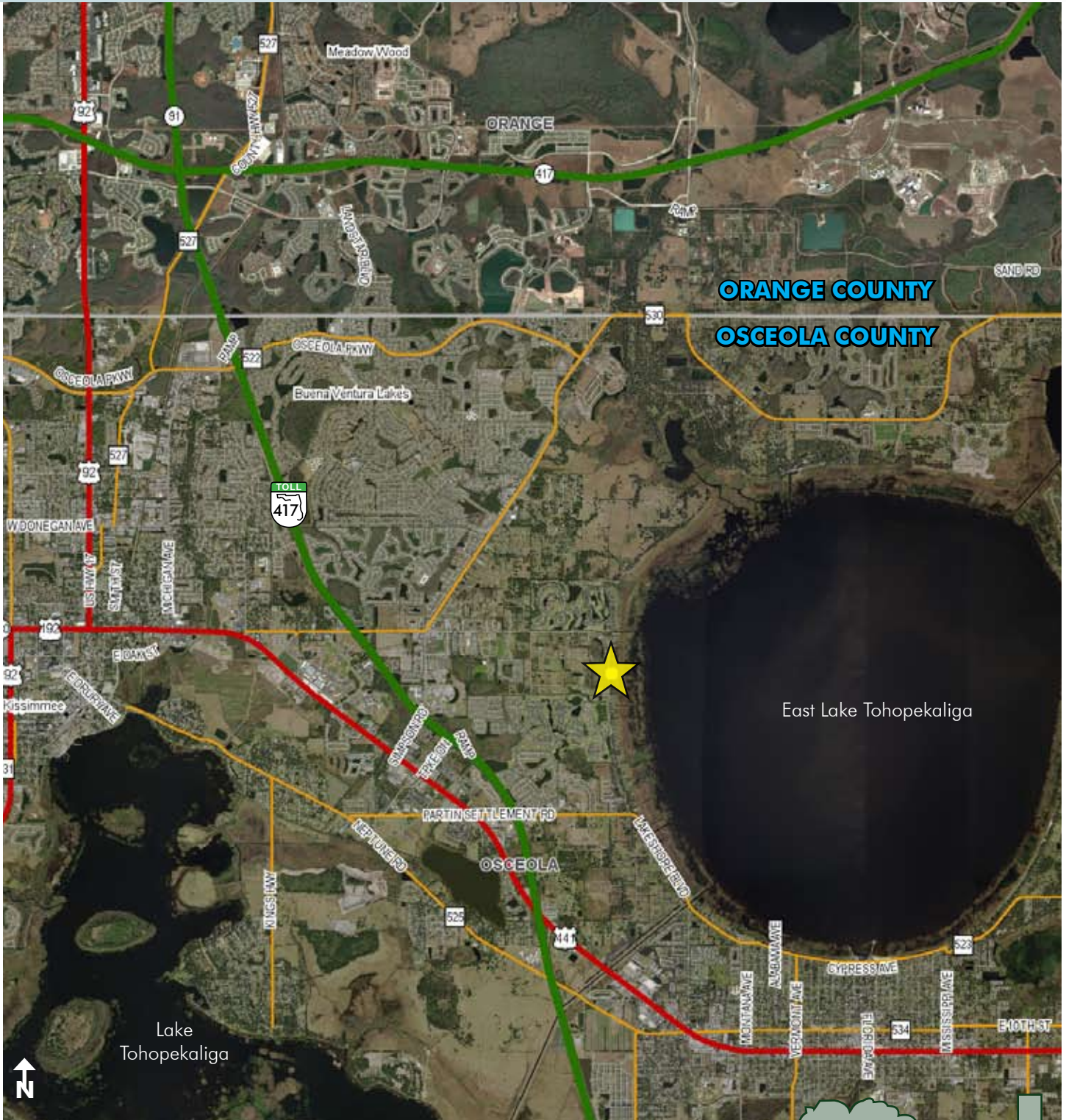


LAKEFRONT NEAR KISSIMMEE

2.34± acres

Osceola County, FL

**UNDER
CONTRACT**



REGIONAL MAP

— Commercial Real Estate Investments | Management | Brokerage | Development | Land

Maury L. Carter & Associates, Inc.
407-422-3144 | www.maurycarter.com

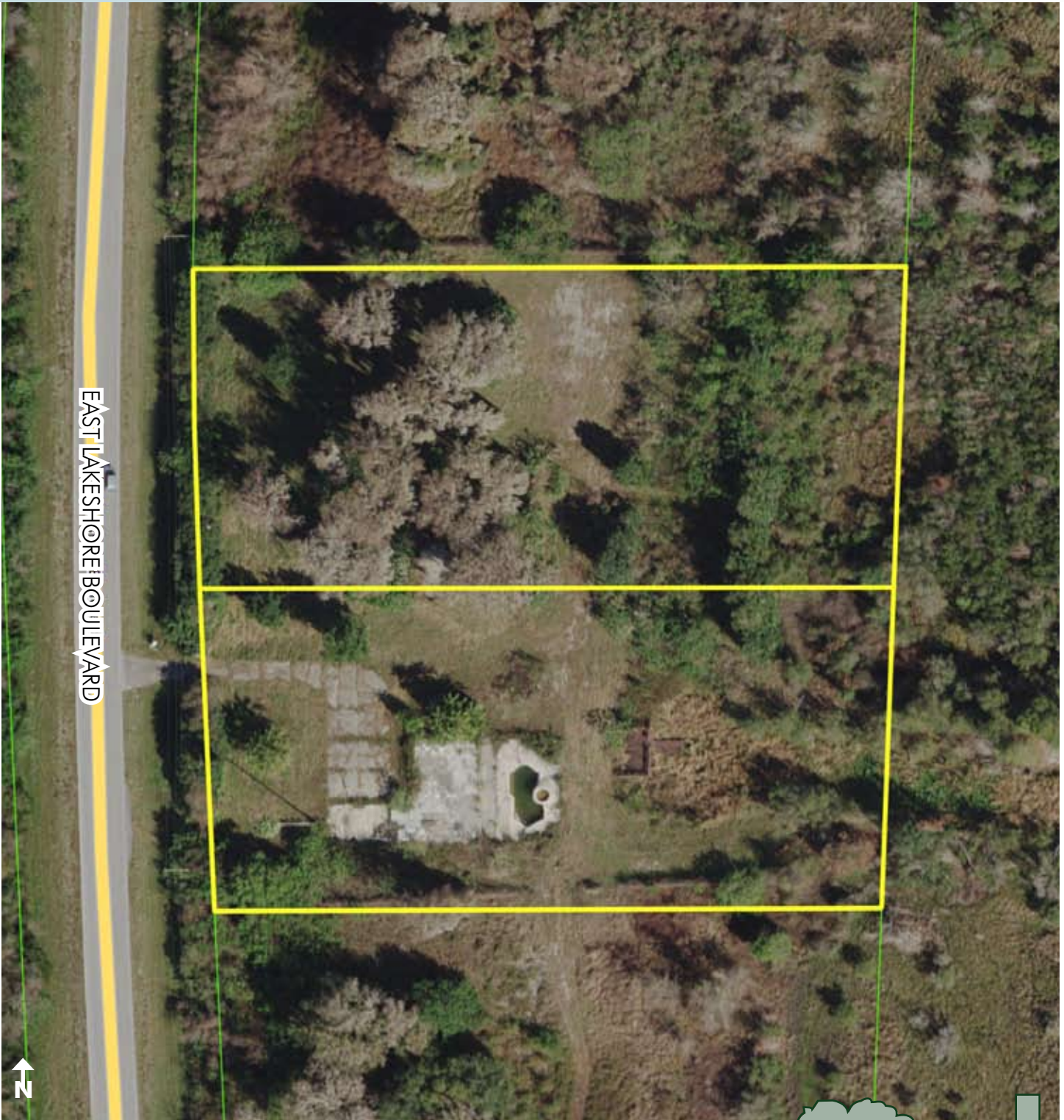


LAKEFRONT NEAR KISSIMMEE

2.34± acres

Osceola County, FL

**UNDER
CONTRACT**



EAST LAKESHORE BOULEVARD



PROPERTY MAP

— Commercial Real Estate Investments | Management | Brokerage | Development | Land

Maury L. Carter & Associates, Inc.
407-422-3144 | www.maurycarter.com

