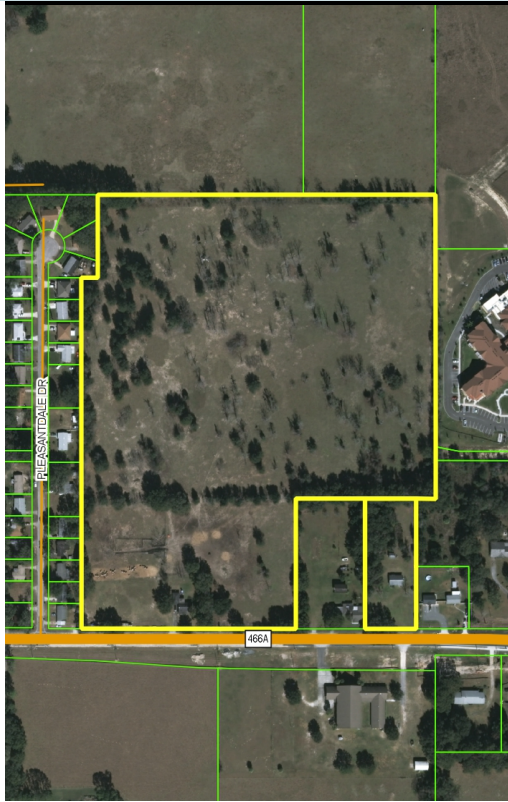


# RESIDENTIAL DEVELOPMENT LAND NEAR CITY OF WILDWOOD/ THE VILLAGES

30± acres • Sumter County, FL



## LOCATION/ DESCRIPTION

On the north side of State Road 466A within the city limits of Wildwood, Sumter County, Florida. This places the property just west of the explosive growth that has occurred over the past 20 years in The Villages and just west of the Providence Independent Living facility.

## SIZE

The property is irregular in shape with frontage at two locations along 466A and contains 30± acres.

## PRICE

\$3,000,000

## ZONING/FLU

R-1/ Low Density Residential. The City of Wildwood is very receptive to a land use change to a medium density planned development.

## ROAD FRONTAGE

650± feet along the western frontage and 150± feet along the eastern frontage of 466A.

## UTILITIES

Sewer is stubbed out to the site from Inspiration Drive (Providence Independent Living). Water is located along SR 466A.

Offering subject to errors, omission, prior sale or withdrawal without notice.

LAND FOR SALE

— Commercial Real Estate Investments | Management | Brokerage | Development | Land —

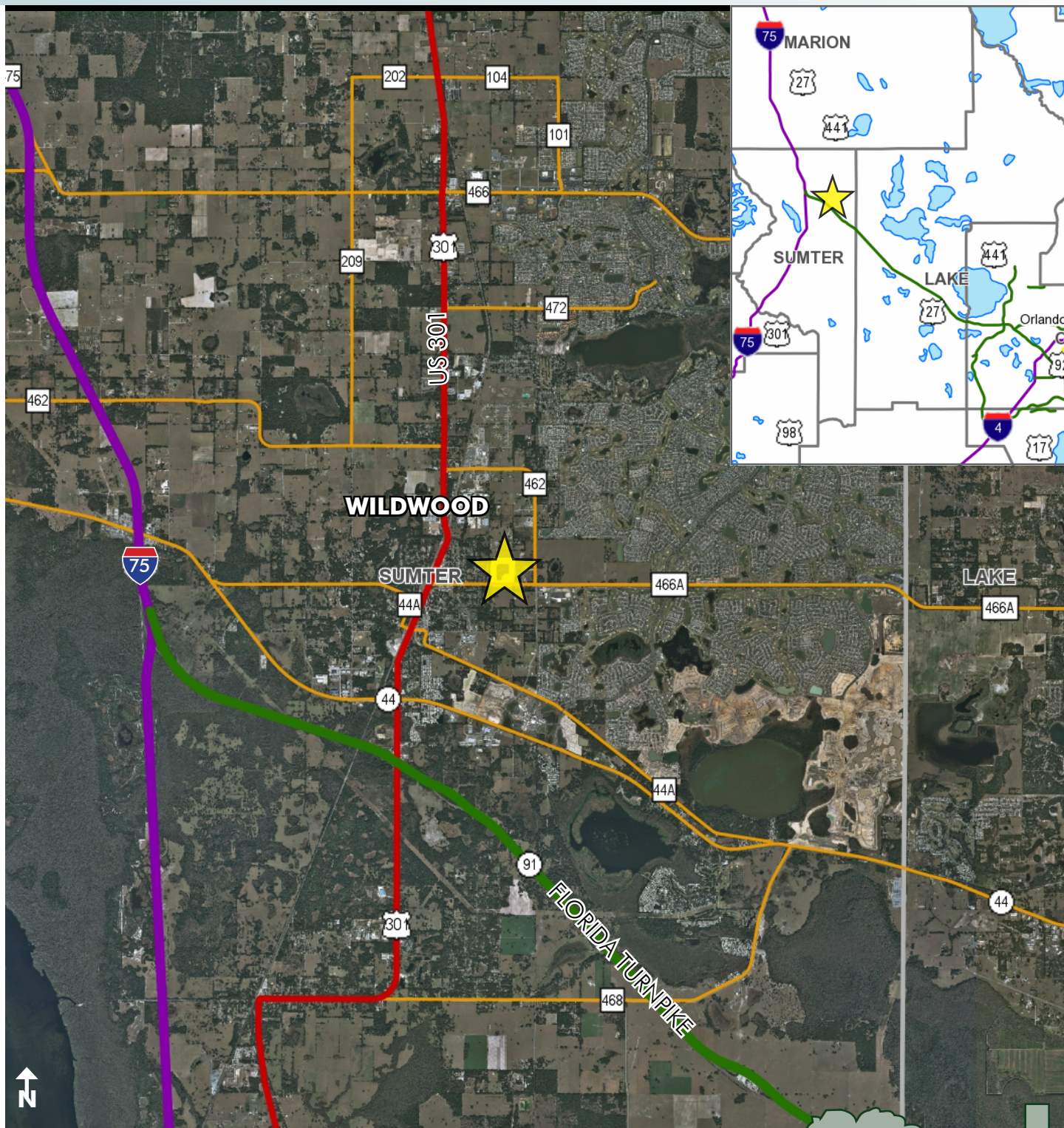
Maury L. Carter & Associates, Inc.  
407-422-3144 | [www.maurycarter.com](http://www.maurycarter.com)





# RESIDENTIAL DEVELOPMENT LAND NEAR CITY OF WILDWOOD/ THE VILLAGES

30± acres • Sumter County, FL



LOCATION MAP

— Commercial Real Estate Investments | Management | Brokerage | Development | Land

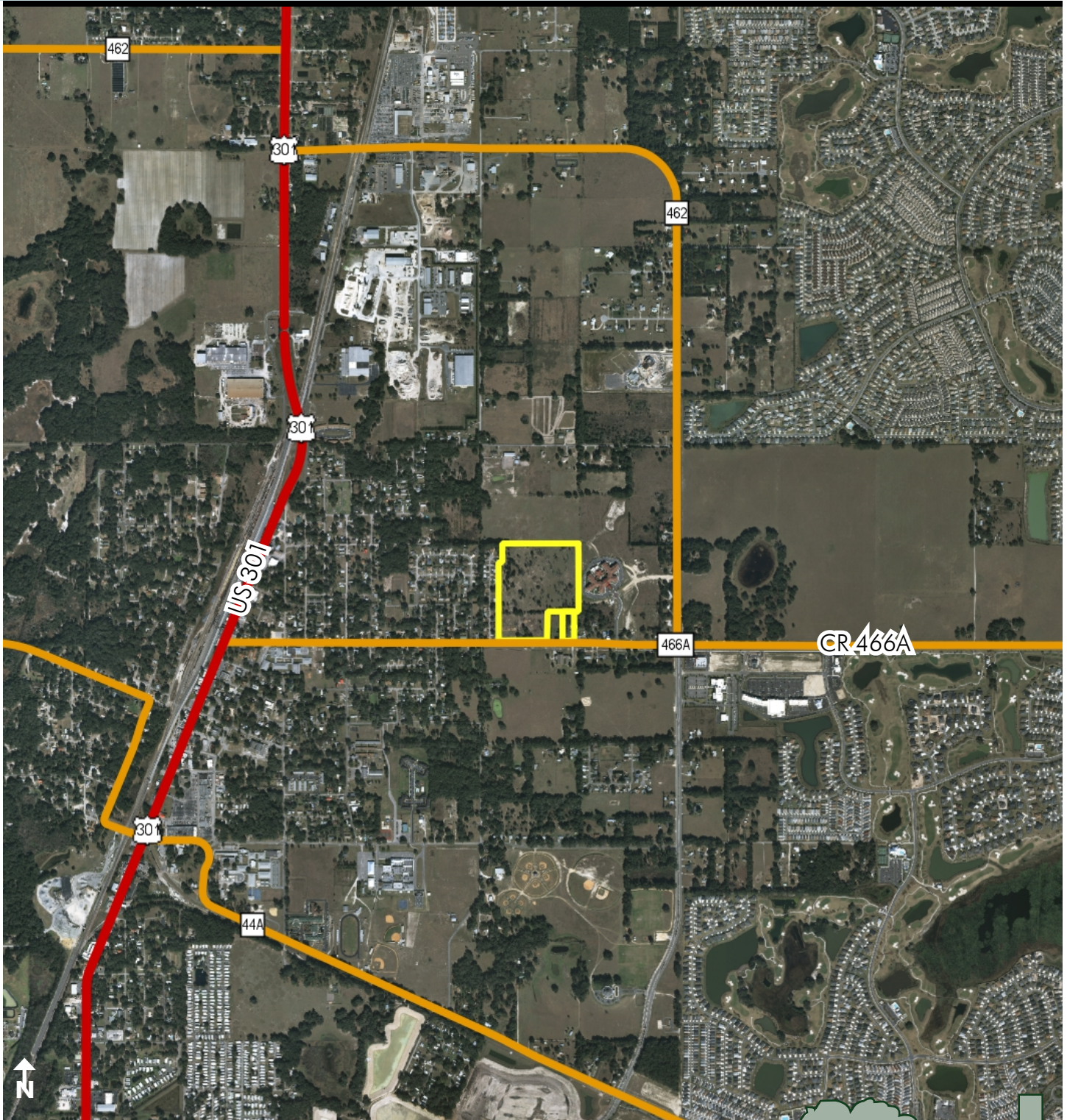
Maury L. Carter & Associates, Inc.  
407-422-3144 | [www.maurycarter.com](http://www.maurycarter.com)





# RESIDENTIAL DEVELOPMENT LAND NEAR CITY OF WILDWOOD/ THE VILLAGES

30± acres • Sumter County, FL



REGIONAL MAP

— Commercial Real Estate Investments | Management | Brokerage | Development | Land

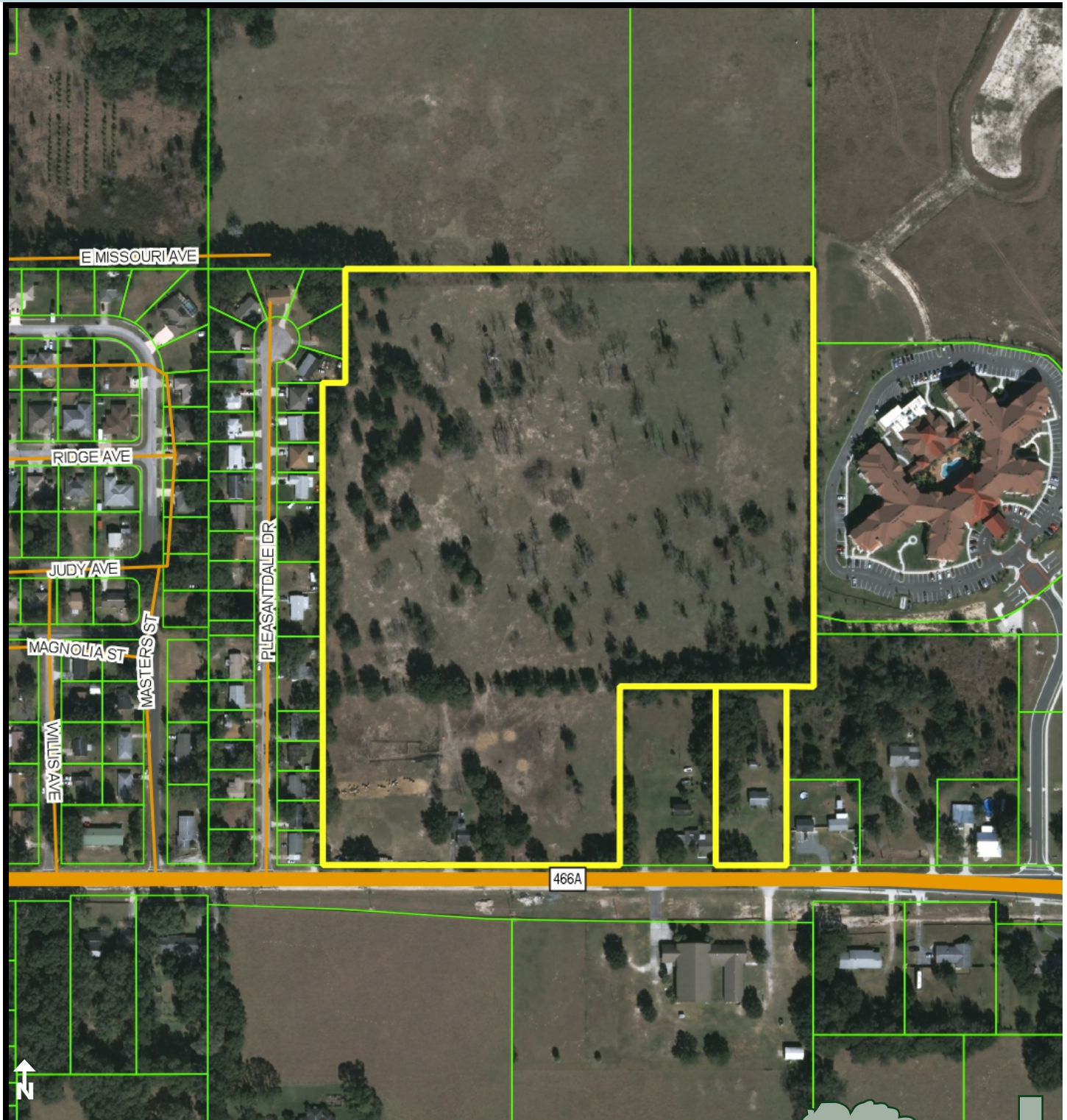
Maury L. Carter & Associates, Inc.  
407-422-3144 | [www.maurycarter.com](http://www.maurycarter.com)





# RESIDENTIAL DEVELOPMENT LAND NEAR CITY OF WILDWOOD/ THE VILLAGES

30± acres • Sumter County, FL



PARCEL MAP

— Commercial Real Estate Investments | Management | Brokerage | Development | Land

Maury L. Carter & Associates, Inc.  
407-422-3144 | [www.maurycarter.com](http://www.maurycarter.com)

