

# GROVELAND SECLUDED LOT

5± acres

Lake County, FL

LAND FOR SALE



## LOCATION

2135 Todd Rd, Groveland, FL 34736.

## SIZE

5± acres

## PRICE

\$149,900

## ZONING

Ag

## UTILITIES

Well and septic. Electric also on site.

## DESCRIPTION

Quiet, secluded lot in southwest Lake County. This property is ideal for SF residential uses. Double-wide mobile home, two car garage, and barn are all on site.

Offering subject to errors, omission, prior sale or withdrawal without notice.



— Commercial Real Estate Investments | Management | Brokerage | Development | Land

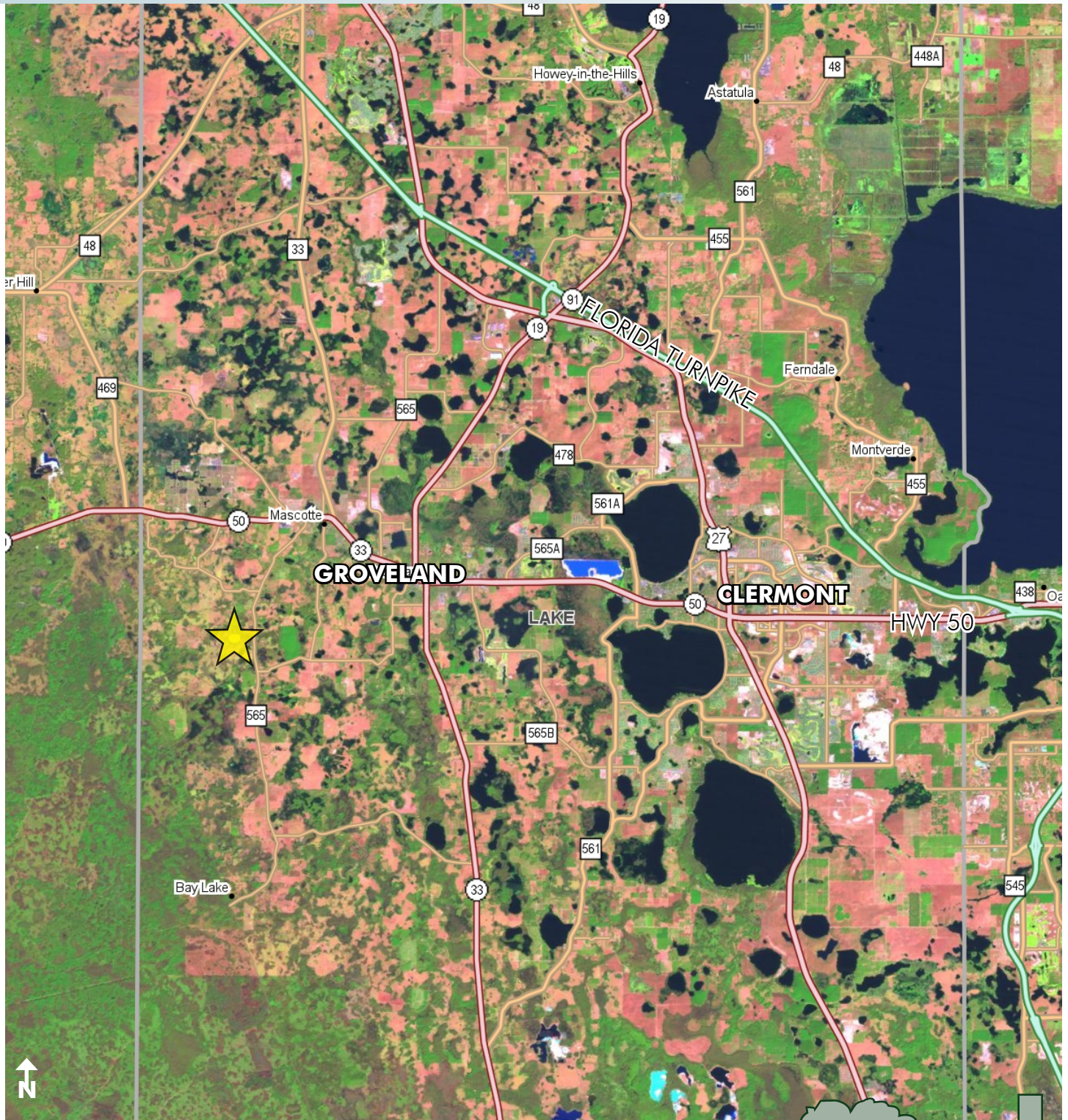
Maury L. Carter & Associates, Inc.  
407-422-3144 | [www.maurycarter.com](http://www.maurycarter.com)



# GROVELAND SECLUDED LOT

5± acres

Lake County, FL



LOCATION MAP

— Commercial Real Estate Investments | Management | Brokerage | Development | Land

Maury L. Carter & Associates, Inc.  
407-422-3144 | [www.maurycarter.com](http://www.maurycarter.com)



# GROVELAND SECLUDED LOT

5± acres

Lake County, FL



PROPERTY MAP

— Commercial Real Estate Investments | Management | Brokerage | Development | Land

Maury L. Carter & Associates, Inc.  
407-422-3144 | [www.maurycarter.com](http://www.maurycarter.com)

