

SOUTHMEADOW

S ORANGE AVE/TOWN CENTER BLVD

17.3± acres (Tract 29A) • Orlando, FL



LOCATION

Located at signaled intersection of major roadways, Town Center Blvd. and South Orange Ave. Join Wawa in this superior location between Hunter's Creek and Southchase.

SIZE

17.3± acres

PRICE

~~WAS \$4,521,528~~

NOW \$3,795,174 (\$5.04/sf)

ZONING

Southchase DRI. Commercial - approved for 95,000sf

ROAD FRONTAGE

1,000'± on Orange Avenue

725'± on Town Center Boulevard

UTILITIES

Orange County

Offering subject to errors, omission, prior sale or withdrawal without notice.

COMMERCIAL LAND FOR SALE

— Commercial Real Estate Investments | Management | Brokerage | Development | Land —

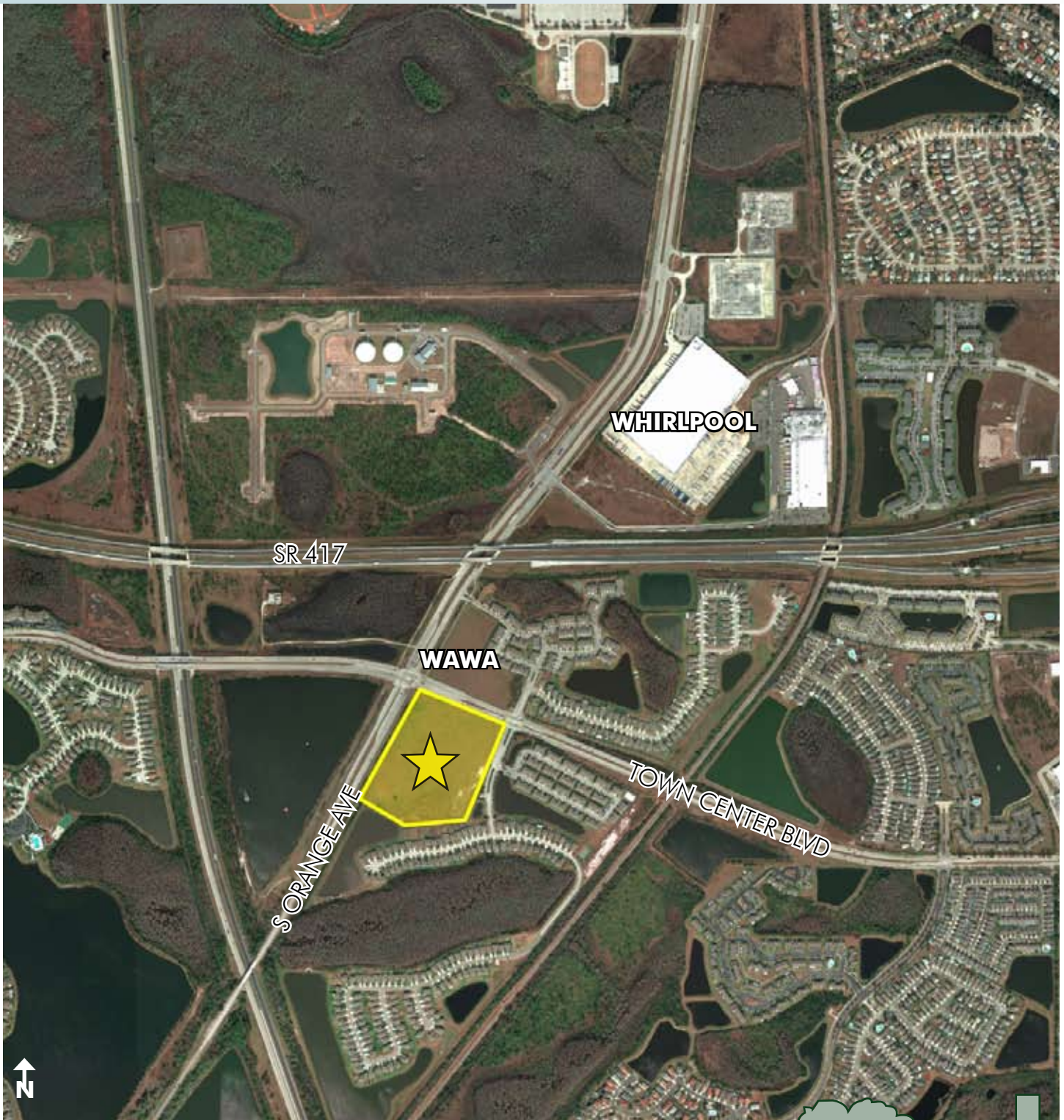
Maury L. Carter & Associates, Inc.
407-422-3144 | www.maurycarter.com



SOUTHMEADOW

S ORANGE AVE/TOWN CENTER BLVD

17.3± acres (Tract 29A) • Orlando, FL



REGIONAL MAP

— Commercial Real Estate Investments | Management | Brokerage | Development | Land

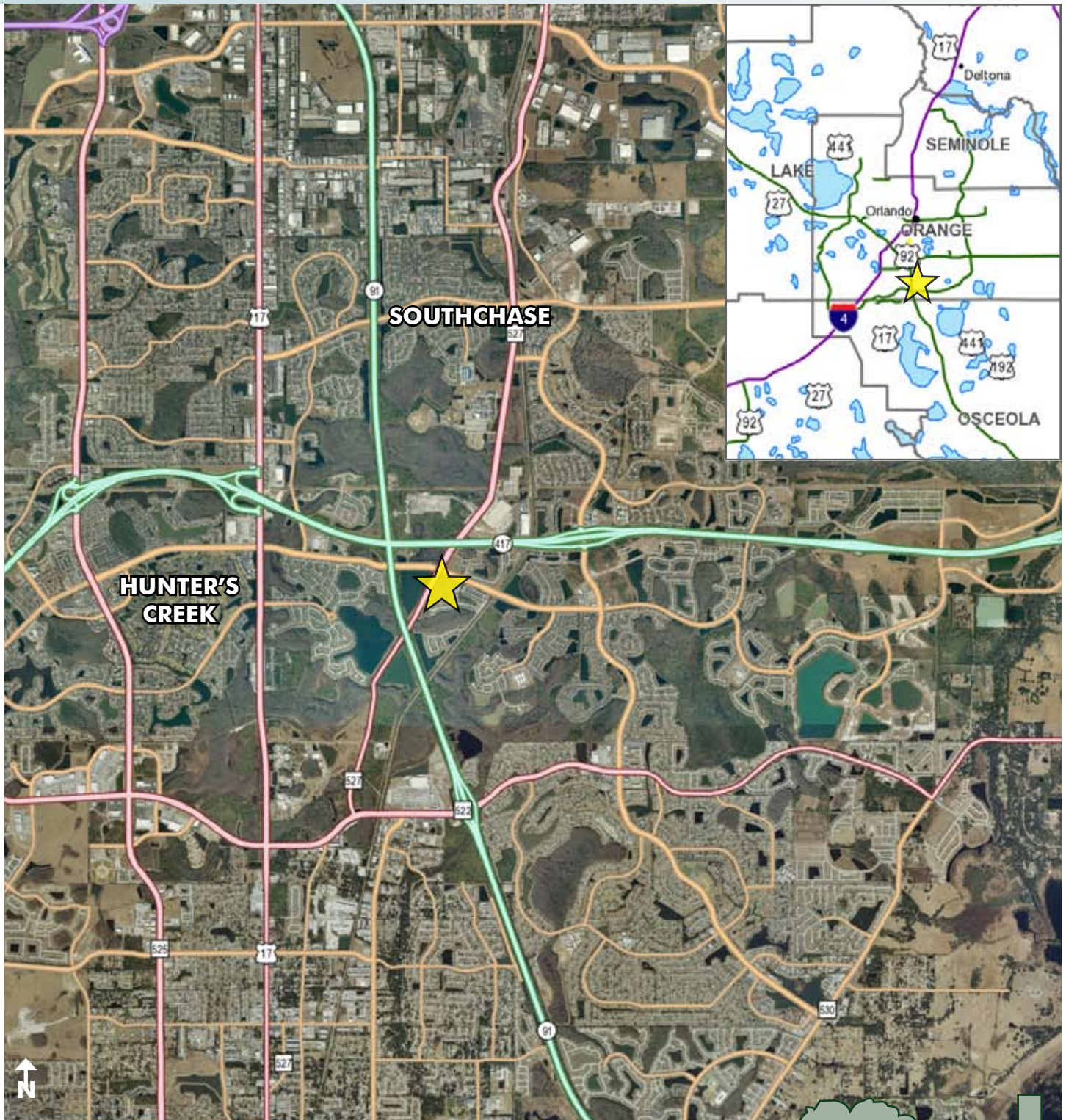
Maury L. Carter & Associates, Inc.
407-422-3144 | www.maurycarter.com



SOUTHMEADOW

S ORANGE AVE/TOWN CENTER BLVD

17.3± acres (Tract 29A) • Orlando, FL



LOCATION MAP

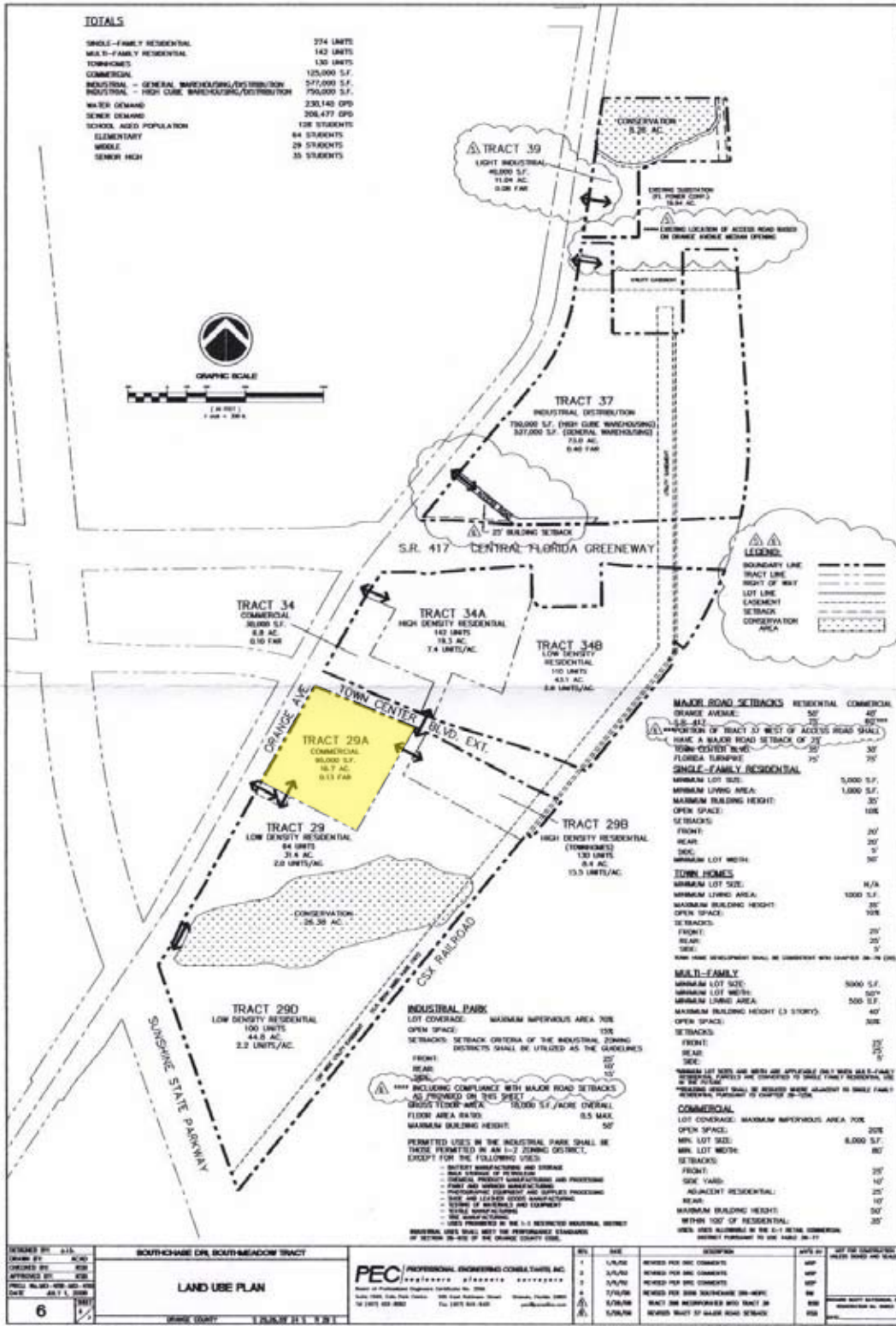
— Commercial Real Estate Investments | Management | Brokerage | Development | Land

Maury L. Carter & Associates, Inc.

407-422-3144 | www.maurycarter.com



SOUTHMEADOW
S ORANGE AVE/TOWN CENTER BLVD
17.3± acres (Tract 29A) • Orlando, FL



— Commercial Real Estate Investments | Management | Brokerage | Development | Land

Maury L. Carter & Associates, Inc.
407-422-3144 | www.maurycarter.com

