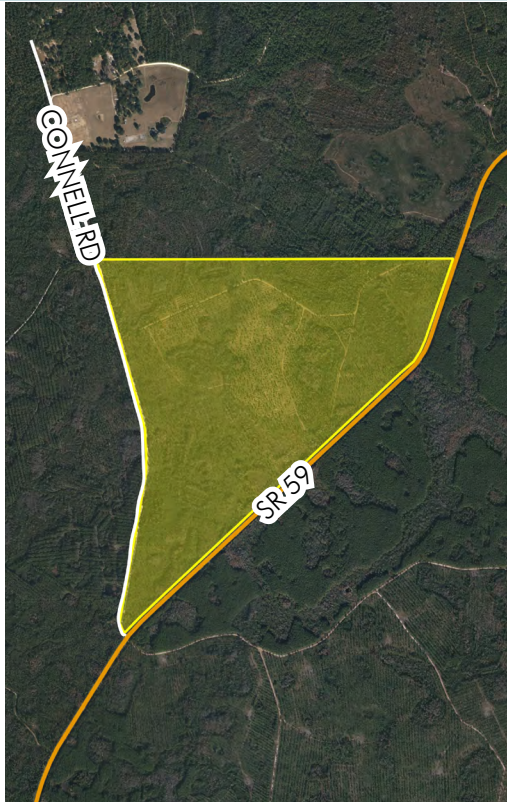


STATE ROAD 59

371± acres

Jefferson County, FL



LOCATION/DESCRIPTION

Property is located on west side of SR 59 and on east side of Connell Tram Road. Minutes from Highway 27, I-10 and Tallahassee.

SIZE

371± acres

PRICE

\$1,500,000 or \$4,043 per acre

ZONING

Agricultural, 1 unit per 20 acres allowed.

ROAD FRONTAGE

1.5± miles on State Road 59

1.1± miles on Connell Tram Road

UTILITIES

Septic and well.

Offering subject to errors, omission, prior sale or withdrawal without notice.

LAND FOR SALE

— Commercial Real Estate Investments | Management | Brokerage | Development | Land —

Maury L. Carter & Associates, Inc.

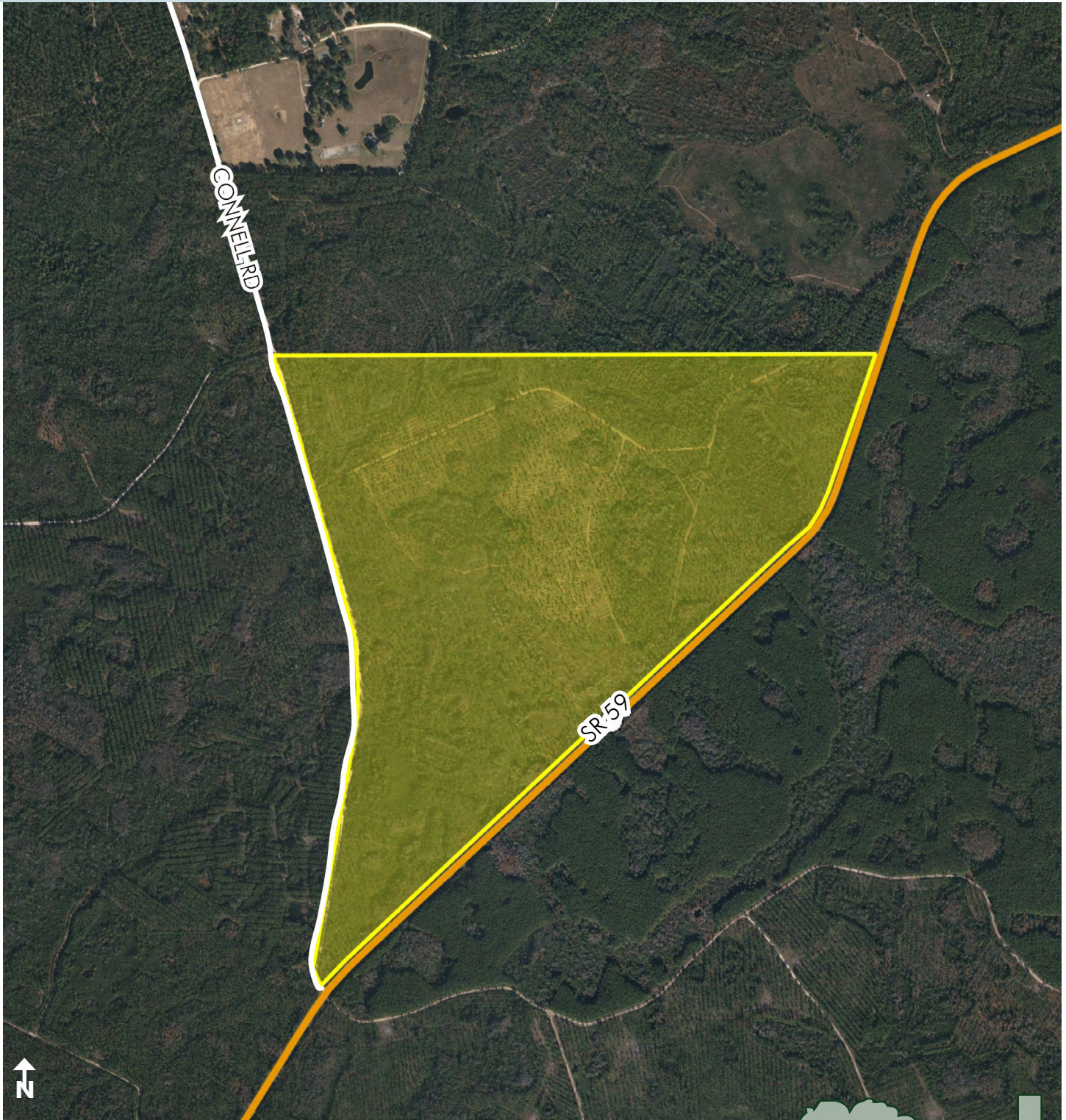
407-422-3144 | www.maurycarter.com



STATE ROAD 59

371 ± acres

Jefferson County, FL



PROPERTY MAP

— Commercial Real Estate Investments | Management | Brokerage | Development | Land —

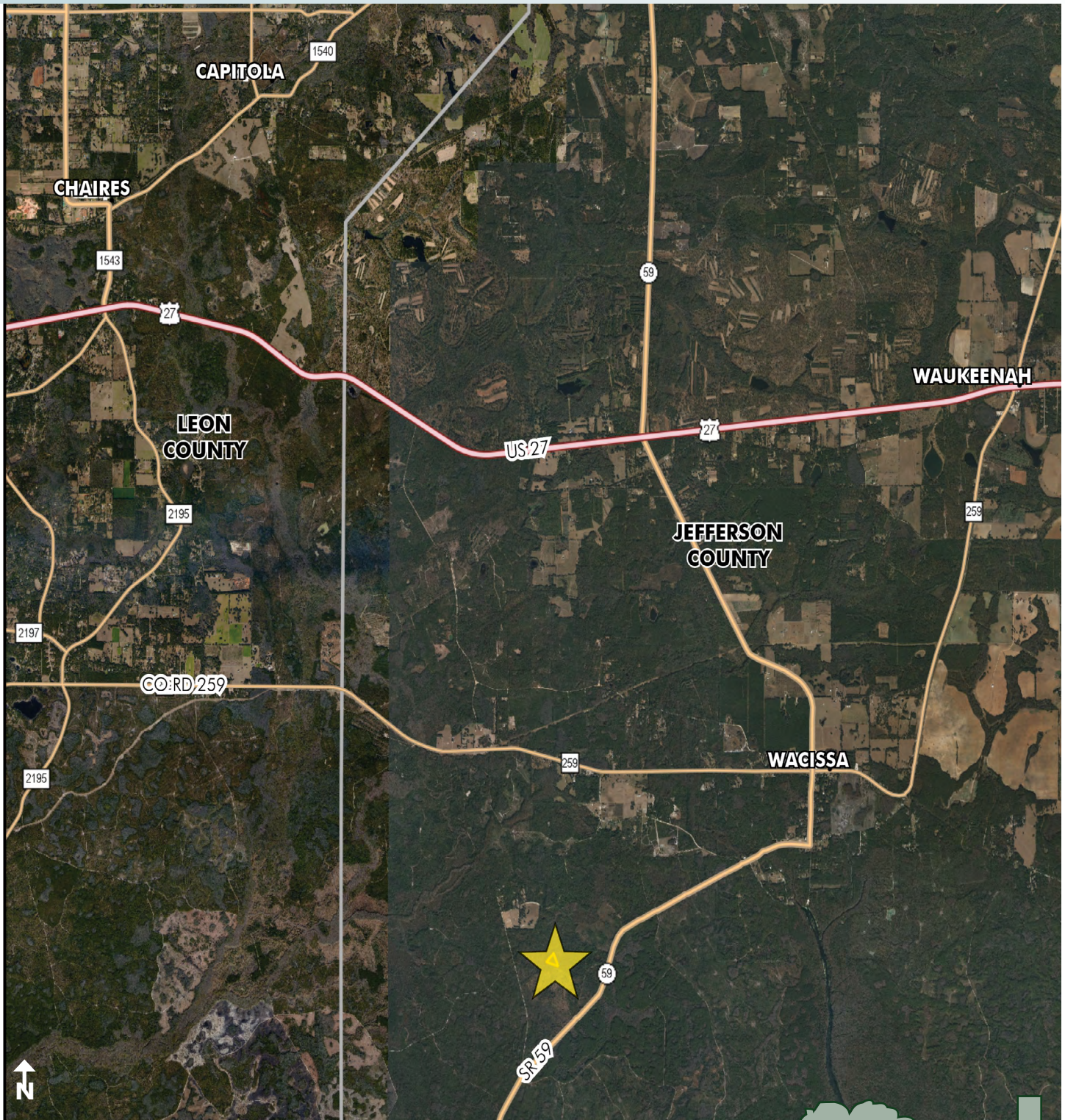
Maury L. Carter & Associates, Inc.
407-422-3144 | www.maurycarter.com



STATE ROAD 59

371 ± acres

Jefferson County, FL



REGIONAL MAP

— Commercial Real Estate Investments | Management | Brokerage | Development | Land

Maury L. Carter & Associates, Inc.
407-422-3144 | www.maurycarter.com

