

# GROVELAND, FL LAND ON BAY LAKE RD

39± acres

Lake County, FL

**PRICE  
REDUCED**

LAND FOR SALE



## LOCATION

13920 Bay Lake Road, on the east side of Bay Lake Road and the south side of Carter Jones Road in Groveland, Florida.

## SIZE

39± acres

## PRICE

WAS \$375,000 (\$9,615/acre)

PRICE REDUCED! NOW \$350,000 (\$8,975/acre)

## ZONING

Agricultural (1 du/10 acres)

## FUTURE LAND USE

Green Swamp Rural Conservation (1du/10 net acres)

## ROAD FRONTAGE

235'± on Bay Lake Road (CR 565)

1,230'± on S side of Carter Jones Road

## UTILITIES

Well and septic

## RESIDENCES

Property includes 1,915sf, 4 bed/2 bath house and 3 bed/2 bath manufactured home. Both residences are tenant occupied.

## PARCEL ID

28-22-24-0001-000-00200 (Alt Key: 1756421)

Offering subject to errors, omission, prior sale or withdrawal without notice.

— Commercial Real Estate Investments | Management | Brokerage | Development | Land —

Maury L. Carter & Associates, Inc.  
407-422-3144 | [www.maurycarter.com](http://www.maurycarter.com)



# GROVELAND, FL LAND ON BAY LAKE RD

39± acres

Lake County, FL

**PRICE  
REDUCED**



PROPERTY MAP

— Commercial Real Estate Investments | Management | Brokerage | Development | Land —

Maury L. Carter & Associates, Inc.  
407-422-3144 | [www.maurycarter.com](http://www.maurycarter.com)



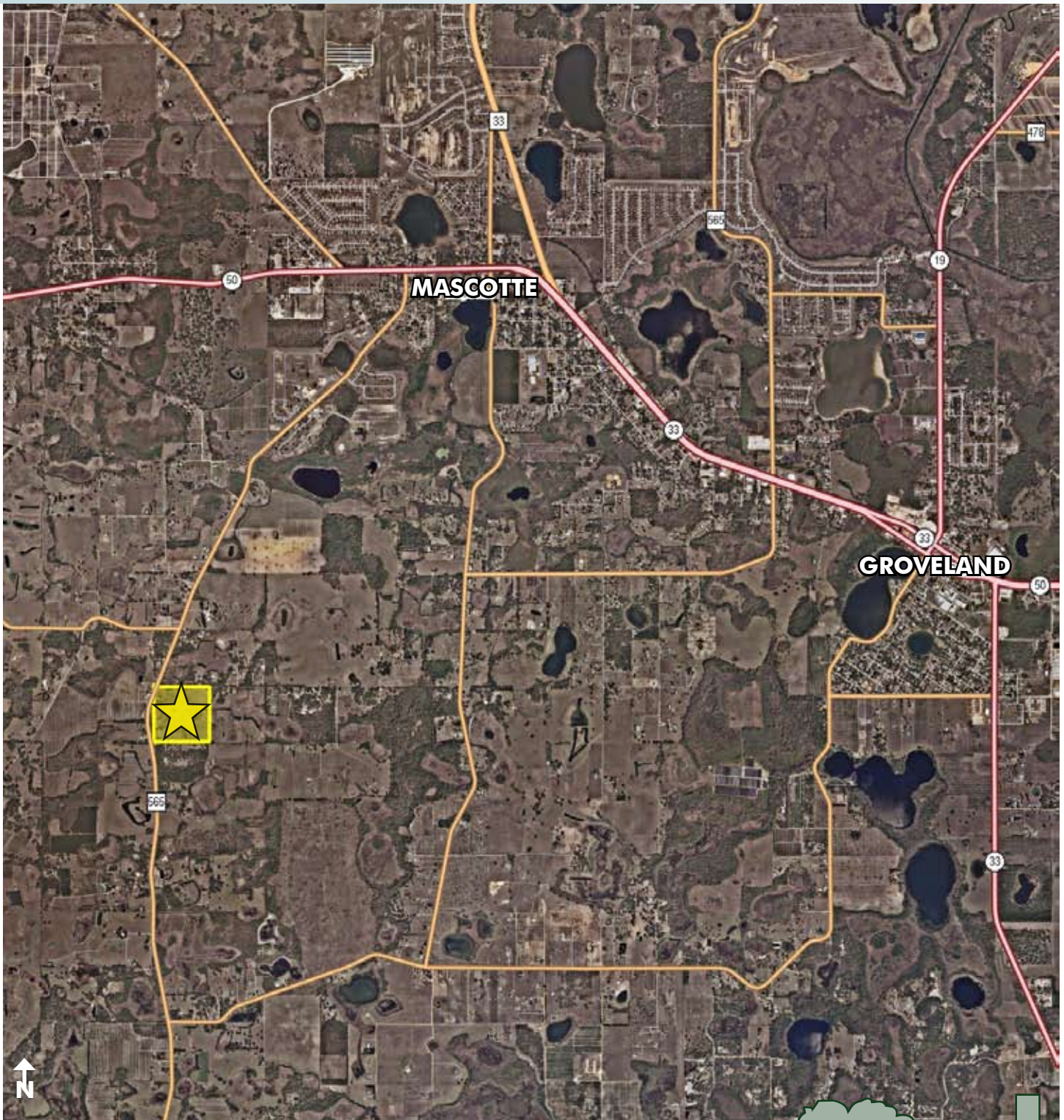


# GROVELAND, FL LAND ON BAY LAKE RD

39± acres

Lake County, FL

**PRICE  
REDUCED**



REGIONAL MAP

— Commercial Real Estate Investments | Management | Brokerage | Development | Land —

Maury L. Carter & Associates, Inc.  
407-422-3144 | [www.maurycarter.com](http://www.maurycarter.com)



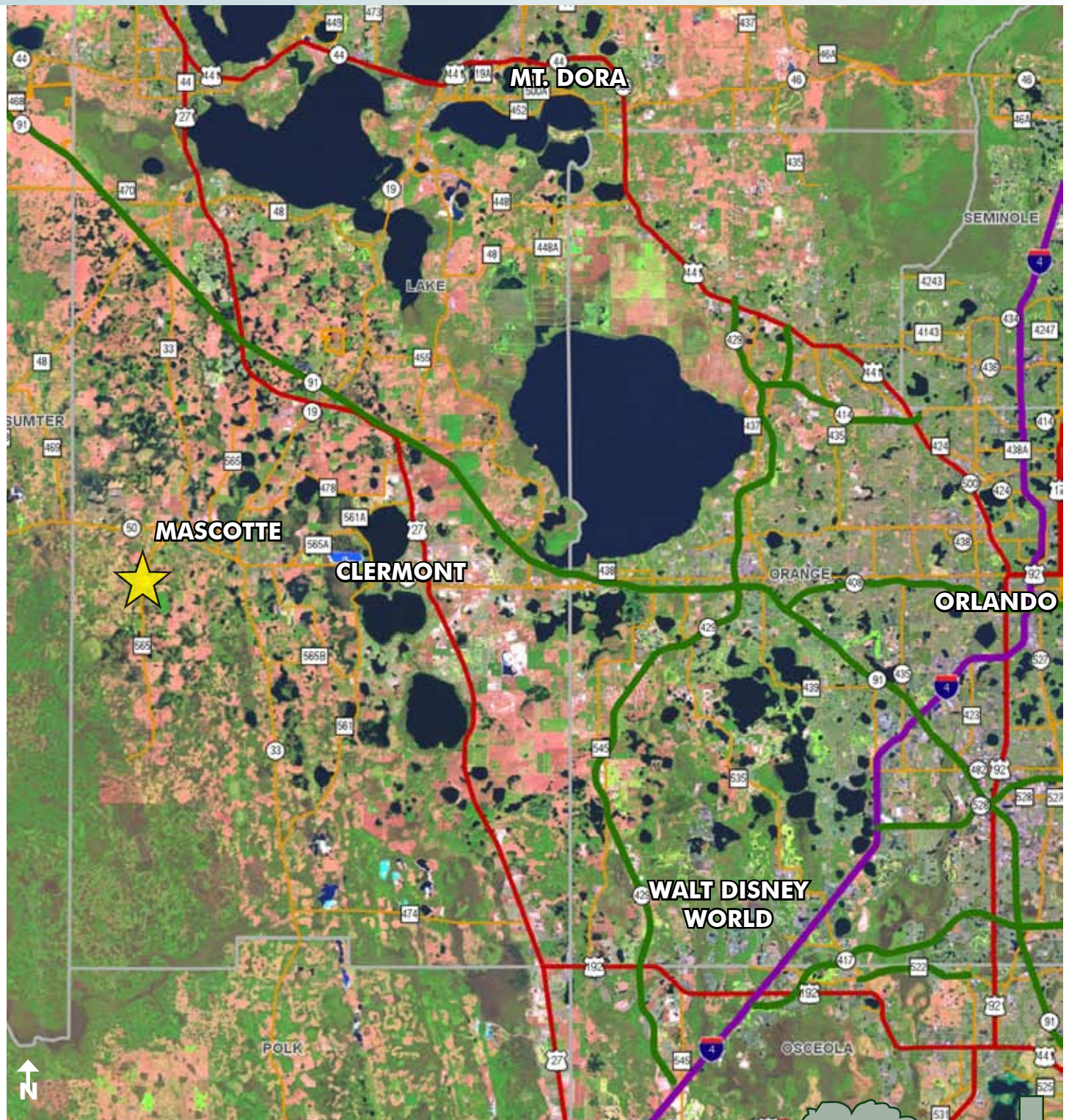


# GROVELAND, FL LAND ON BAY LAKE RD

39± acres

Lake County, FL

**PRICE  
REDUCED**



LOCATION MAP

— Commercial Real Estate Investments | Management | Brokerage | Development | Land

Maury L. Carter & Associates, Inc.  
407-422-3144 | [www.maurycarter.com](http://www.maurycarter.com)

