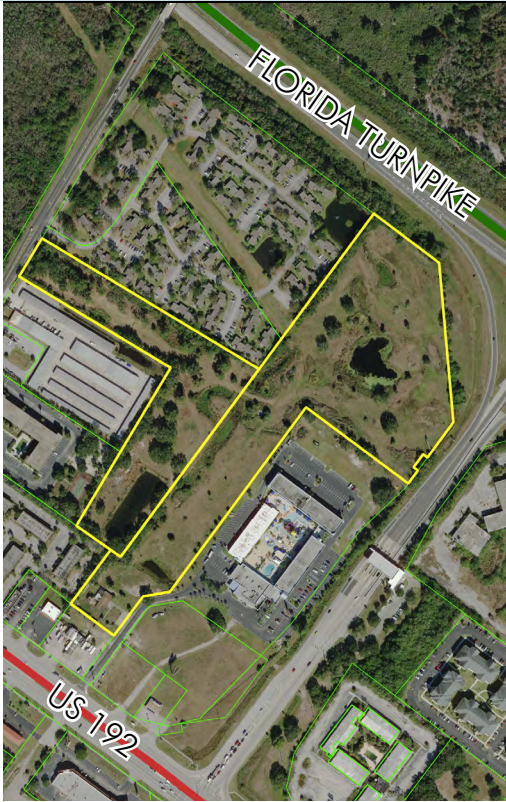


ORLANDO INT'L AIRPORT/MEDICAL CITY AREA COMMERCIAL TOURIST PROPERTY

22.5± acres • Osceola County, FL

**UNDER
CONTRACT**



LOCATION

Centrally located between Kissimmee and St. Cloud at the Exit 244 interchange of the Florida Turnpike.

SIZE

22.5± acres

PRICE

\$2,250,000

UNDER CONTRACT

ROAD FRONTAGE

900'± along the Florida Turnpike

281'± along Simpson Rd

UTILITIES

Water and sewer available.

ZONING

Commercial Tourist. Potential uses include: hotel, multi-family apartment and townhomes or office building complex. Multiple possibilities for this property!

DESCRIPTION

This property is at the heart of the tourist sector and within the East 192 Community Redevelopment Area. Located just minutes from the booming Lake Nona/Medical City area and the Orlando Int'l Airport which had approx. 35.71 million air passengers in 2014.

Offering subject to errors, omission, prior sale or withdrawal without notice.

DRIVE TIMES

- 1 mile from the Florida Advanced Manufacturing Research Center
- 15 min to Medical City and Orlando Int'l Airport
- 30 min to Downtown Orlando, Disney World, Sea World and Universal Studios
- 1 hr to Florida East Coast Beaches

LAND FOR SALE

— Commercial Real Estate Investments | Management | Brokerage | Development | Land

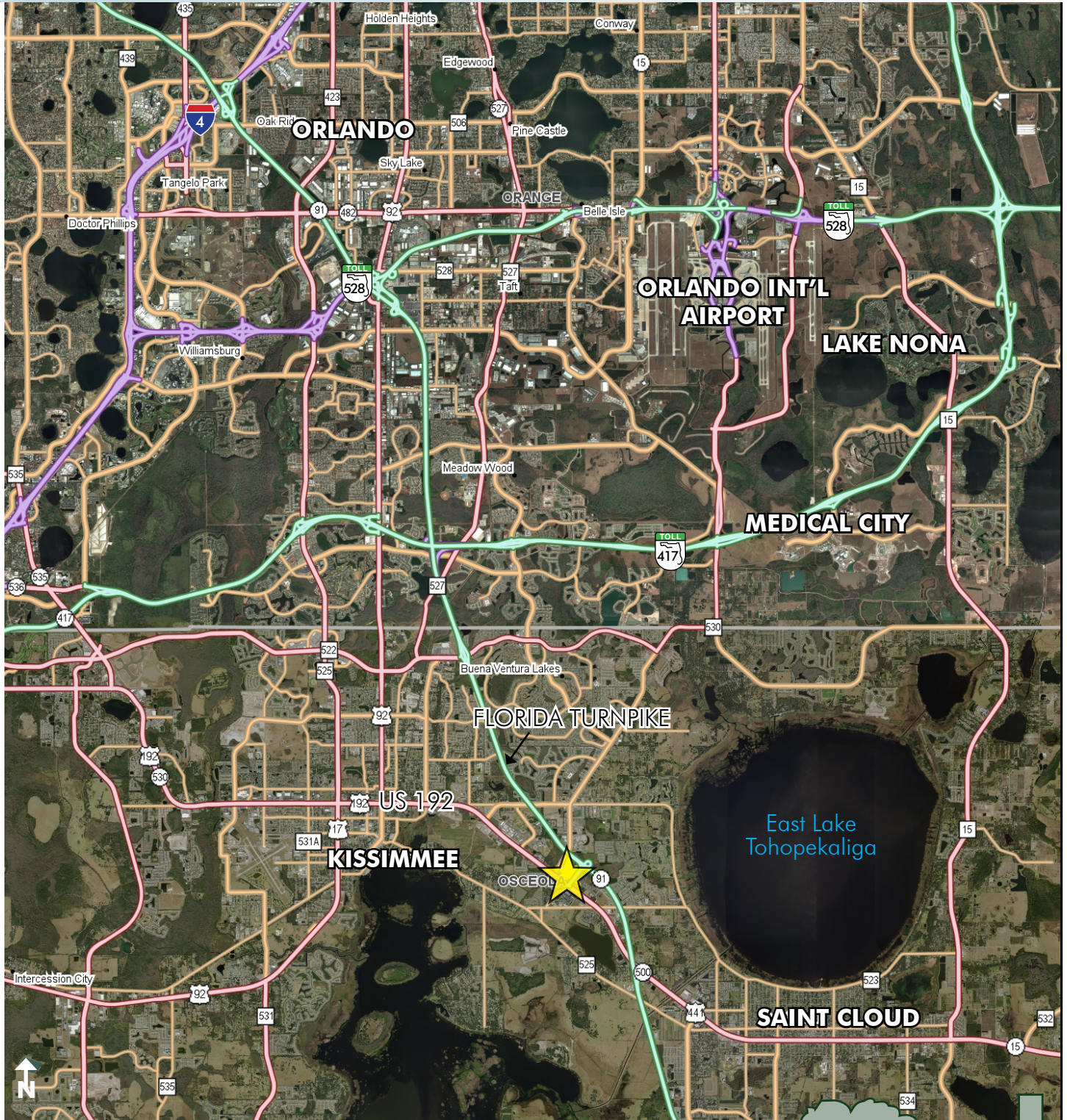
Maury L. Carter & Associates, Inc.
407-422-3144 | www.maurycarter.com



ORLANDO INT'L AIRPORT/MEDICAL CITY AREA COMMERCIAL TOURIST PROPERTY

22.5± acres • Osceola County, FL

**UNDER
CONTRACT**



LOCATION MAP

— Commercial Real Estate Investments | Management | Brokerage | Development | Land

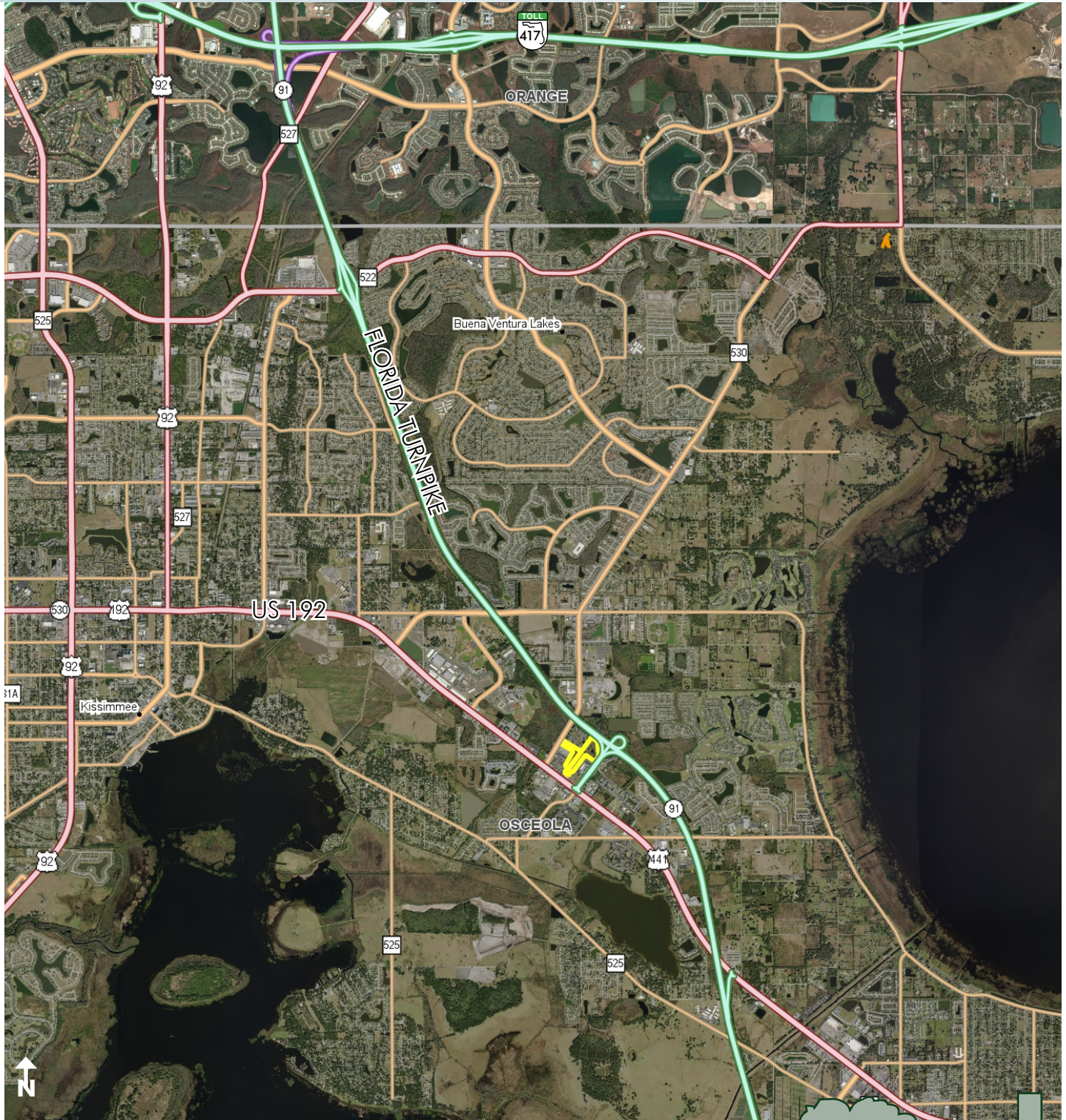
Maury L. Carter & Associates, Inc.
407-422-3144 | www.maurycarter.com



ORLANDO INT'L AIRPORT/MEDICAL CITY AREA COMMERCIAL TOURIST PROPERTY

22.5± acres • Osceola County, FL

**UNDER
CONTRACT**



REGIONAL MAP

— Commercial Real Estate Investments | Management | Brokerage | Development | Land

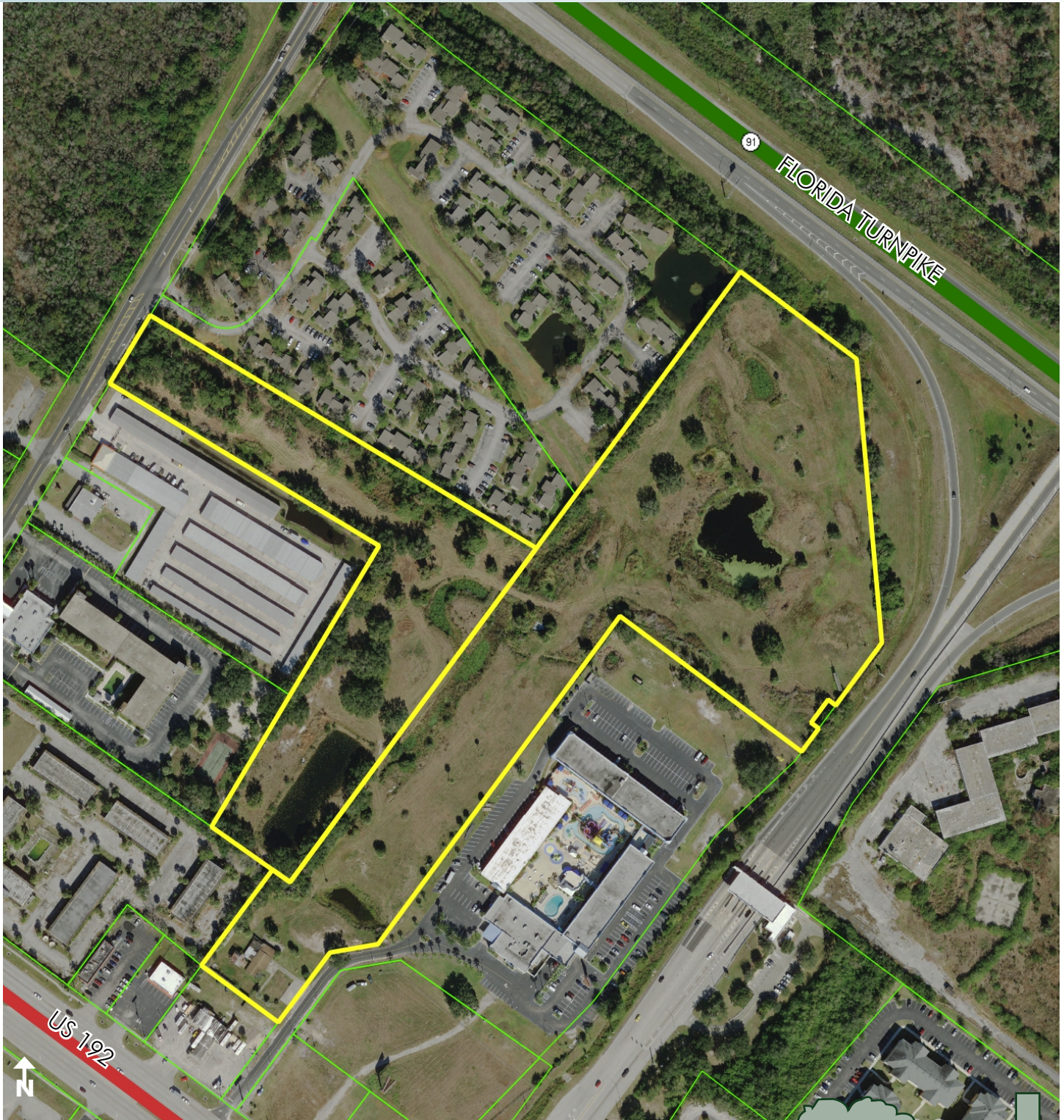
Maury L. Carter & Associates, Inc.
407-422-3144 | www.maurycarter.com



ORLANDO INT'L AIRPORT/MEDICAL CITY AREA COMMERCIAL TOURIST PROPERTY

22.5± acres • Osceola County, FL

**UNDER
CONTRACT**



PROPERTY MAP

— Commercial Real Estate Investments | Management | Brokerage | Development | Land

Maury L. Carter & Associates, Inc.
407-422-3144 | www.maurycarter.com



ORLANDO INT'L AIRPORT/MEDICAL CITY AREA COMMERCIAL TOURIST PROPERTY

22.5± acres • Osceola County, FL

**UNDER
CONTRACT**



Map 2: East U.S. 192 2014 Aerial

E 192 COMMUNITY REDEVELOPMENT AREA MAP

— Commercial Real Estate Investments | Management | Brokerage | Development | Land

Maury L. Carter & Associates, Inc.
407-422-3144 | www.maurycarter.com

