

WINONA RANCH

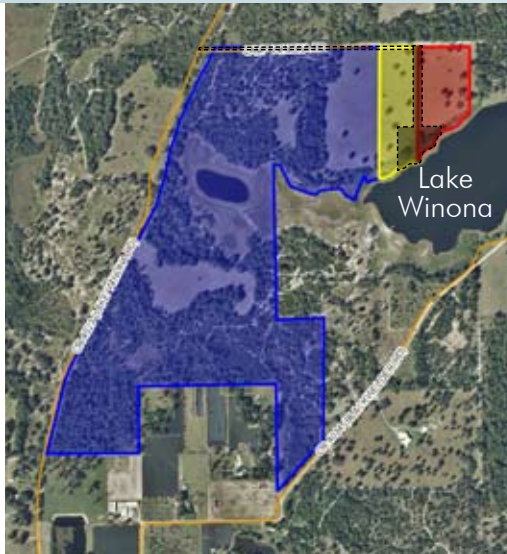
161-181± ACRES AVAILABLE

Part of Deep Creek Ranch (750± acres total) • Volusia County, FL

**PORTION
SOLD!**

**PORTION UNDER
CONTRACT**

LAND FOR SALE



LOCATION

Main entrance located on Lake Winona Road. Property is located in north Volusia County, just two miles SW of the intersection of Hwy 11 and Hwy 40. 1 hour to Orlando, 2 hours to Tampa, 35 minutes to Daytona, 55 minutes to New Smyrna Beach, 1 hour to Ocala.

SIZE/PURCHASE OPTIONS

Tract A: 161± acres = \$739,795 or \$4,595/acre
(104± ACRES SOLD, REMAINDER OF PROPERTY UNDER CONTRACT)

Tract B: 8.25± acre lakefront residential lot (SOLD)

Tract C: 8.05± acre lakefront residential lot = \$95,000
(UNDER CONTRACT)

Tract D: purchase entire 181± acres = \$850,000 or \$4,696/acre (was \$1.1M, then \$1M, now reduced to current price) (TRACT B AND PORTION OF TRACT A SOLD, REMAINDER OF PROPERTY UNDER CONTRACT)

ZONING

A-1 (1 unit/10 acres)

LAKE FRONTAGE/ACCESS

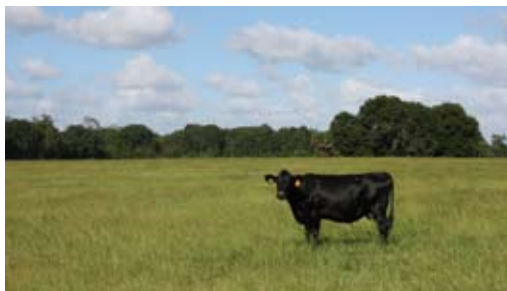
1,050'± of lake frontage on Lake Winona. Lake Winona, 100± acres in size, is spring-fed, sand bottom, and is "walk off into the water" high banked frontage.

DESCRIPTION

Winona Ranch is one of the most desirable ranches currently offered in the State of Florida. Hunters, fishermen, outdoor enthusiasts, ranchers, farmers, agricultural users and others, take notice! This property offers opportunities for all!

Enjoy exclusion, peacefulness and quiet surroundings on your private acreage consisting of ancient oak hammocks, pine stands and improved pasture land. Build your dream home overlooking the waters of Lake Winona. Water ski, wake board, or fish on pristine Lake Winona.

Offering subject to errors, omission, prior sale or withdrawal without notice.



— Commercial Real Estate Investments | Management | Brokerage | Development | Land

Maury L. Carter & Associates, Inc.
407-422-3144 | www.maurycarter.com



Maury L. Carter & Associates, Inc.SM
Licensed Real Estate Broker

WINONA RANCH

161-181± ACRES AVAILABLE

Part of Deep Creek Ranch (750± acres total) • Volusia County, FL

**PORTION
SOLD!**

**PORTION UNDER
CONTRACT**

UPLANDS/WETLANDS

Property has a high ratio of uplands. This ranch has high elevations that provide great views of Lake Winona.

LOTS

These 181± acres have been approved and divided into 10± acre lots. This will allow future buyer of property flexibility and potential future income from sale of 10± acre lot sales. Please ask for more information.

NEIGHBORING PROPERTIES

Neighboring properties consist of YMCA Lake Winona Camp, farms, ranches, groves and hunting land. In addition, Volusia County and St. Johns River Water Management District owns approximately 5,000± acres immediately west of the property.



— Commercial Real Estate Investments | Management | Brokerage | Development | Land —

Maury L. Carter & Associates, Inc.
407-422-3144 | www.maurycarter.com



WINONA RANCH

161-181± ACRES AVAILABLE

Part of Deep Creek Ranch (750± acres total) • Volusia County, FL

**PORTION
SOLD!**

**PORTION UNDER
CONTRACT**

Option A: 161± acres (104AC SOLD/REMAINDER UNDER CONTRACT)

Option B: 8.25± acres (SOLD)

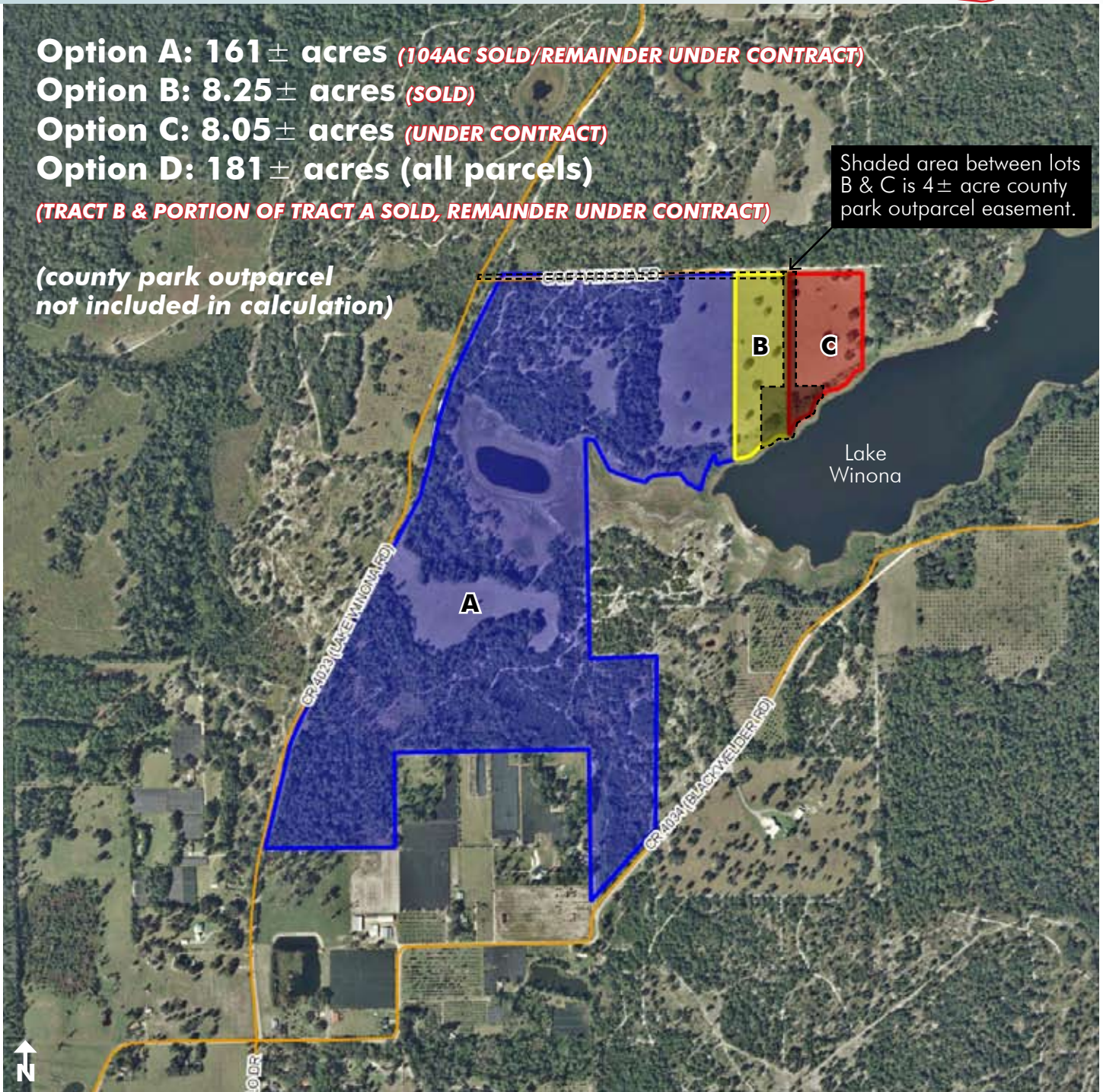
Option C: 8.05± acres (UNDER CONTRACT)

Option D: 181± acres (all parcels)

(TRACT B & PORTION OF TRACT A SOLD, REMAINDER UNDER CONTRACT)

(county park outparcel
not included in calculation)

Shaded area between lots
B & C is 4± acre county
park outparcel easement.



PARCELS/EASEMENT MAP

— Commercial Real Estate Investments | Management | Brokerage | Development | Land

Maury L. Carter & Associates, Inc.

407-422-3144 | www.maurycarter.com



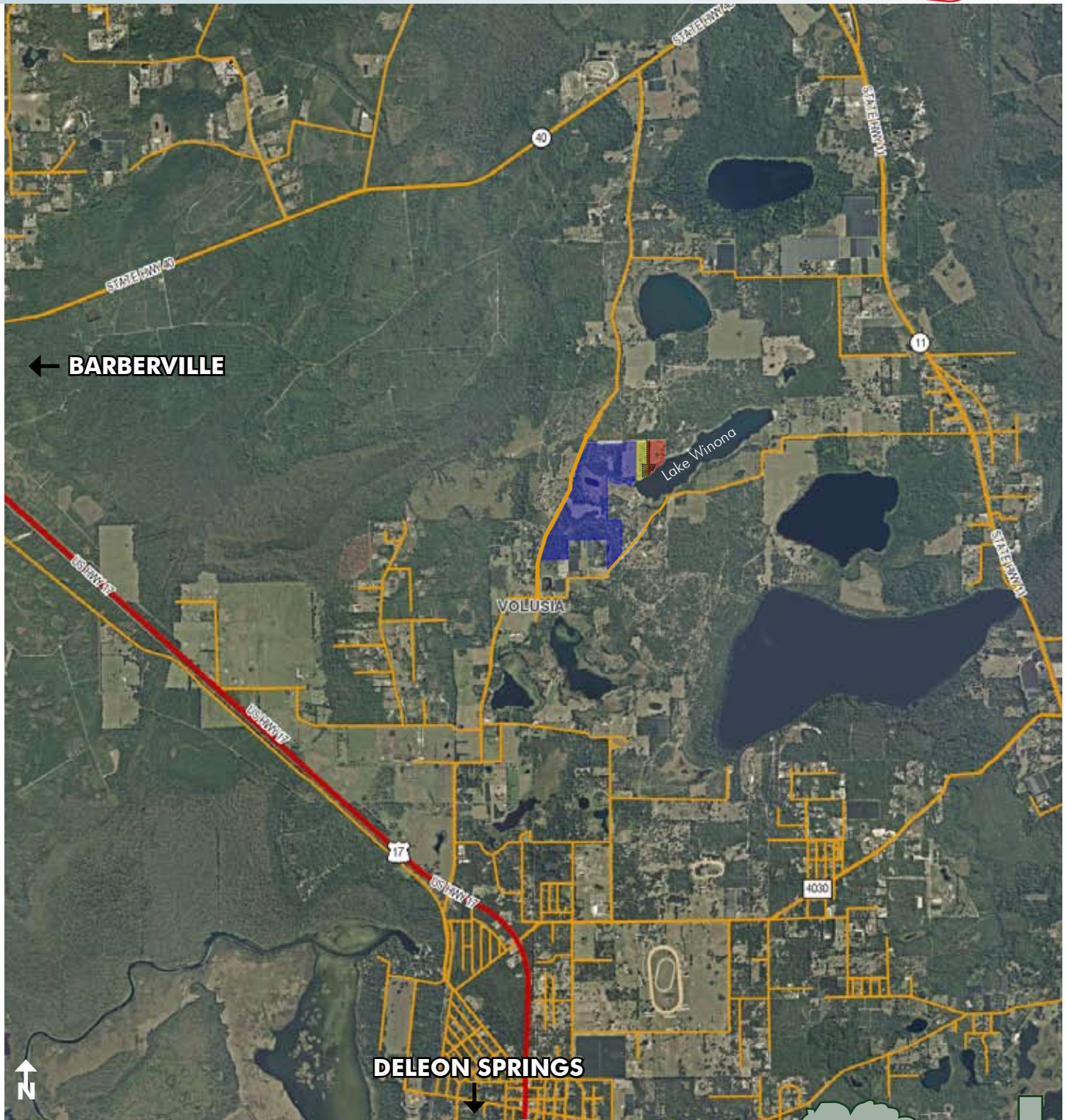
WINONA RANCH

161-181± ACRES AVAILABLE

Part of Deep Creek Ranch (750± acres total) • Volusia County, FL

**PORTION
SOLD!**

**PORTION UNDER
CONTRACT**



REGIONAL MAP

— Commercial Real Estate Investments | Management | Brokerage | Development | Land

Maury L. Carter & Associates, Inc.
407-422-3144 | www.maurycarter.com



WINONA RANCH

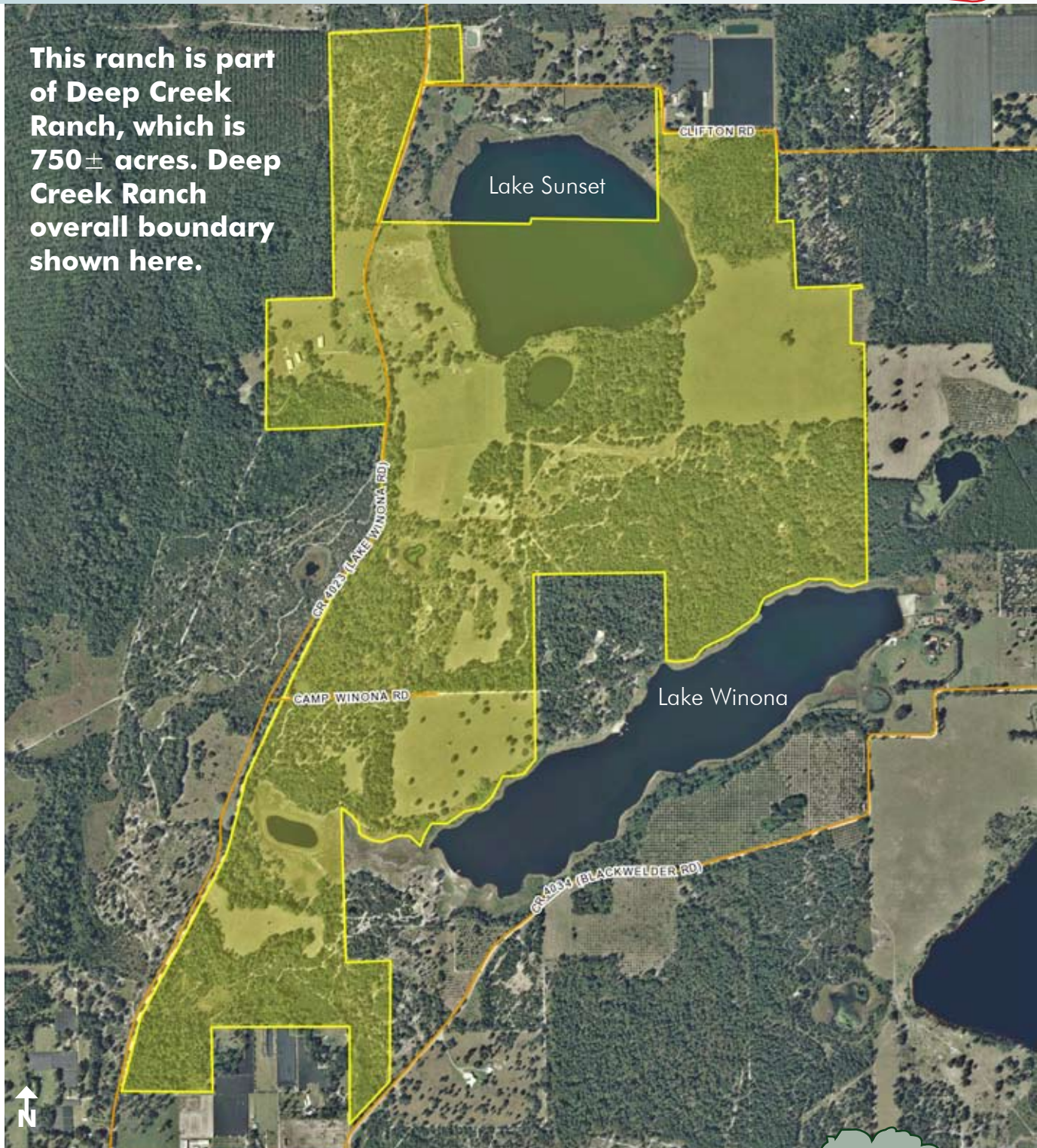
161-181± ACRES AVAILABLE

Part of Deep Creek Ranch (750± acres total) • Volusia County, FL

**PORTION
SOLD!**

**PORTION UNDER
CONTRACT**

**This ranch is part
of Deep Creek
Ranch, which is
750± acres. Deep
Creek Ranch
overall boundary
shown here.**



DEEP CREEK RANCH PARCEL MAP

— Commercial Real Estate Investments | Management | Brokerage | Development | Land —

Maury L. Carter & Associates, Inc.
407-422-3144 | www.maurycarter.com



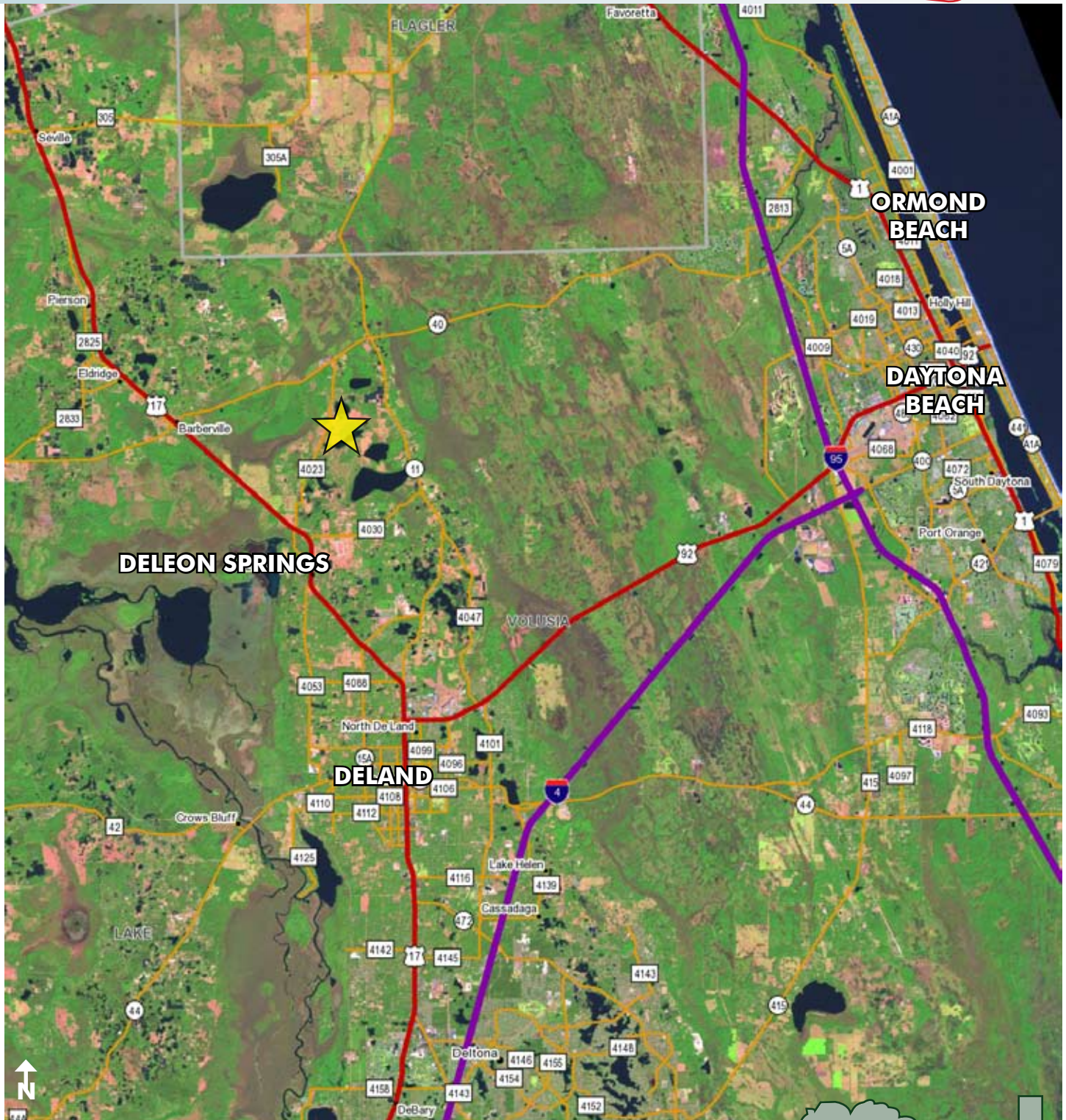
WINONA RANCH

161-181± ACRES AVAILABLE

Part of Deep Creek Ranch (750± acres total) • Volusia County, FL

**PORTION
SOLD!**

**PORTION UNDER
CONTRACT**



LOCATION MAP

— Commercial Real Estate Investments | Management | Brokerage | Development | Land

Maury L. Carter & Associates, Inc.
407-422-3144 | www.maurycarter.com

