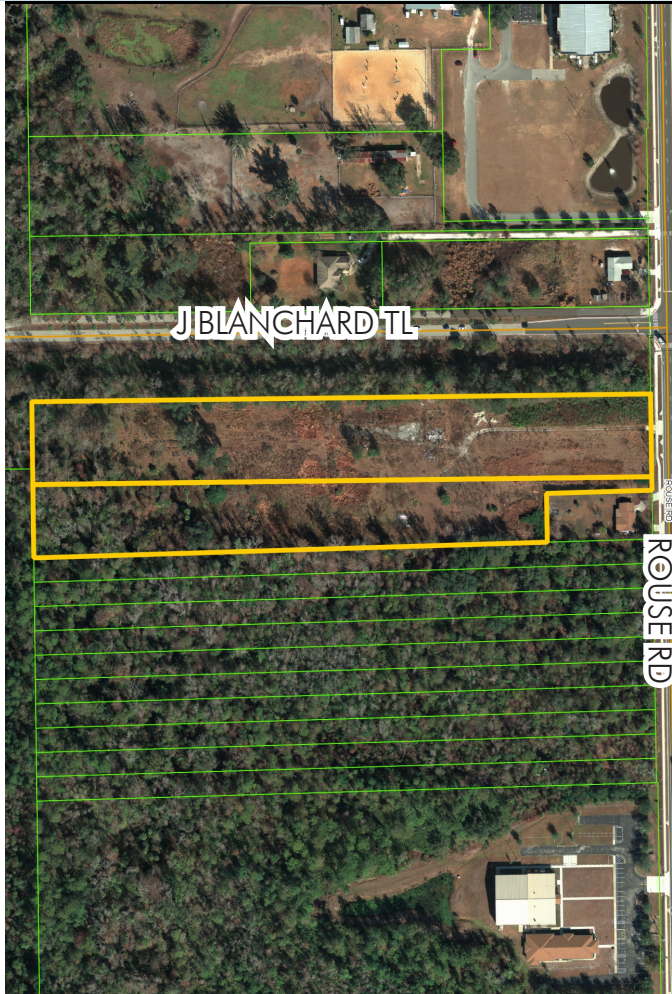


RESIDENTIAL LAND ROUSE RD

8.58± acres (gross)

Orlando, FL



LOCATION

Located at the southwest corner of Rouse Road and Jay Blanchard Trail.

PARCEL IDs

16-22-31-8972-00-080

16-22-31-8972-00-090

SIZE

8.58± gross acres

(7.32± net acres)

PRICE

\$750,000

ZONING/FLU

North 4.99± acres: R-2/ Low to medium Residential

South 3.59± acres: R-1/ Low to medium Residential

ROAD FRONTAGE

200± feet on west side of Rouse Road

UTILITIES

Orange County Utilities

DESCRIPTION

Irregularly shaped 8.58 acres. At present zoning allows 56 residential units, however FLU allows 73 units. Zoned for University High School (B), Union Park Middle School (C), and Riverdale Elementary (A).

Offering subject to errors, omission, prior sale or withdrawal without notice.

LAND FOR SALE

— Commercial Real Estate Investments | Management | Brokerage | Development | Land

Maury L. Carter & Associates, Inc.

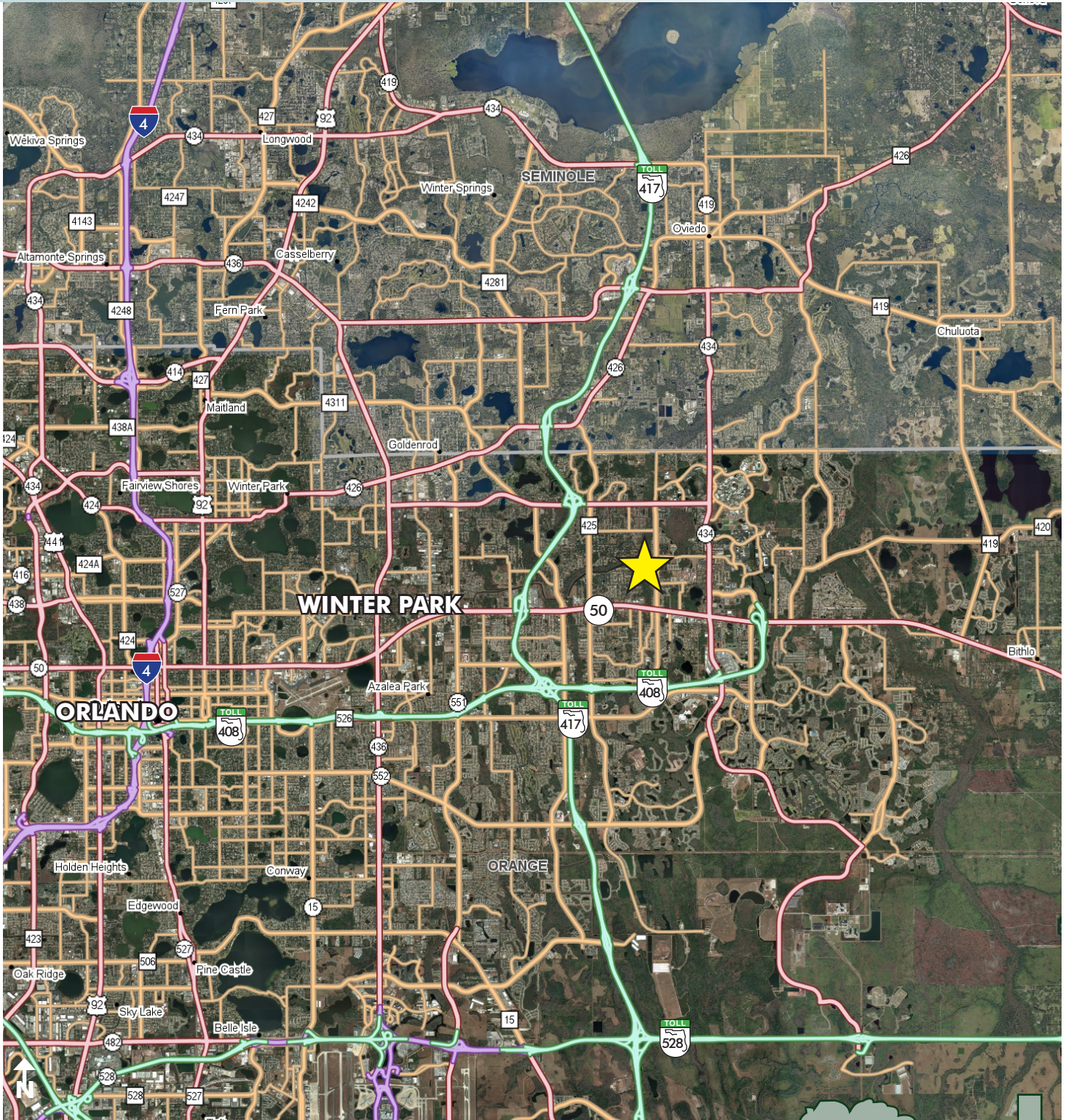
407-422-3144 | www.maurycarter.com



RESIDENTIAL LAND ROUSE RD

8.58± acres (gross)

Orlando, FL



LOCATION MAP

— Commercial Real Estate Investments | Management | Brokerage | Development | Land

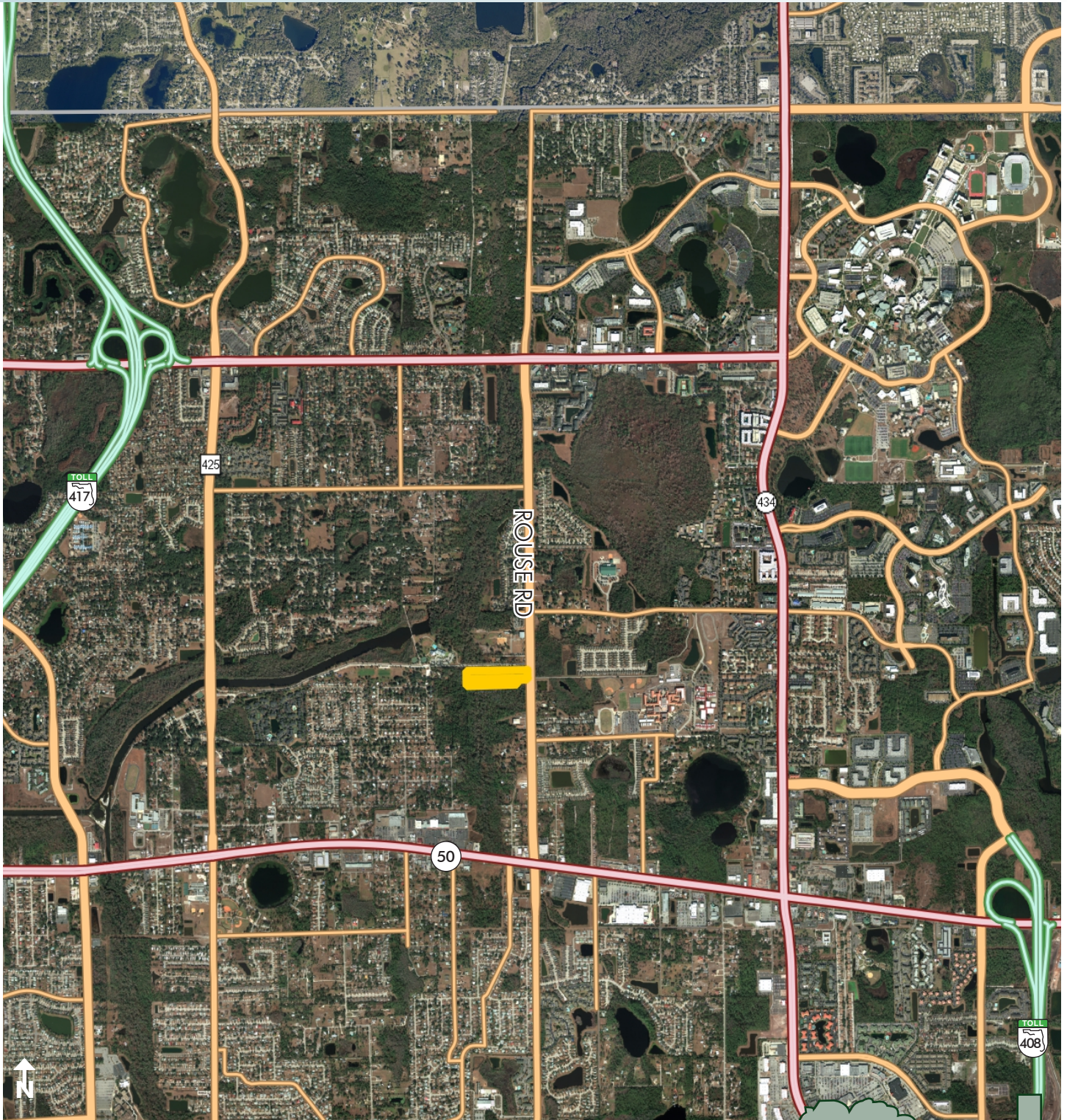
Maury L. Carter & Associates, Inc.
407-422-3144 | www.maurycarter.com



RESIDENTIAL LAND ROUSE RD

8.58± acres (gross)

Orlando, FL



REGIONAL MAP

— Commercial Real Estate Investments | Management | Brokerage | Development | Land

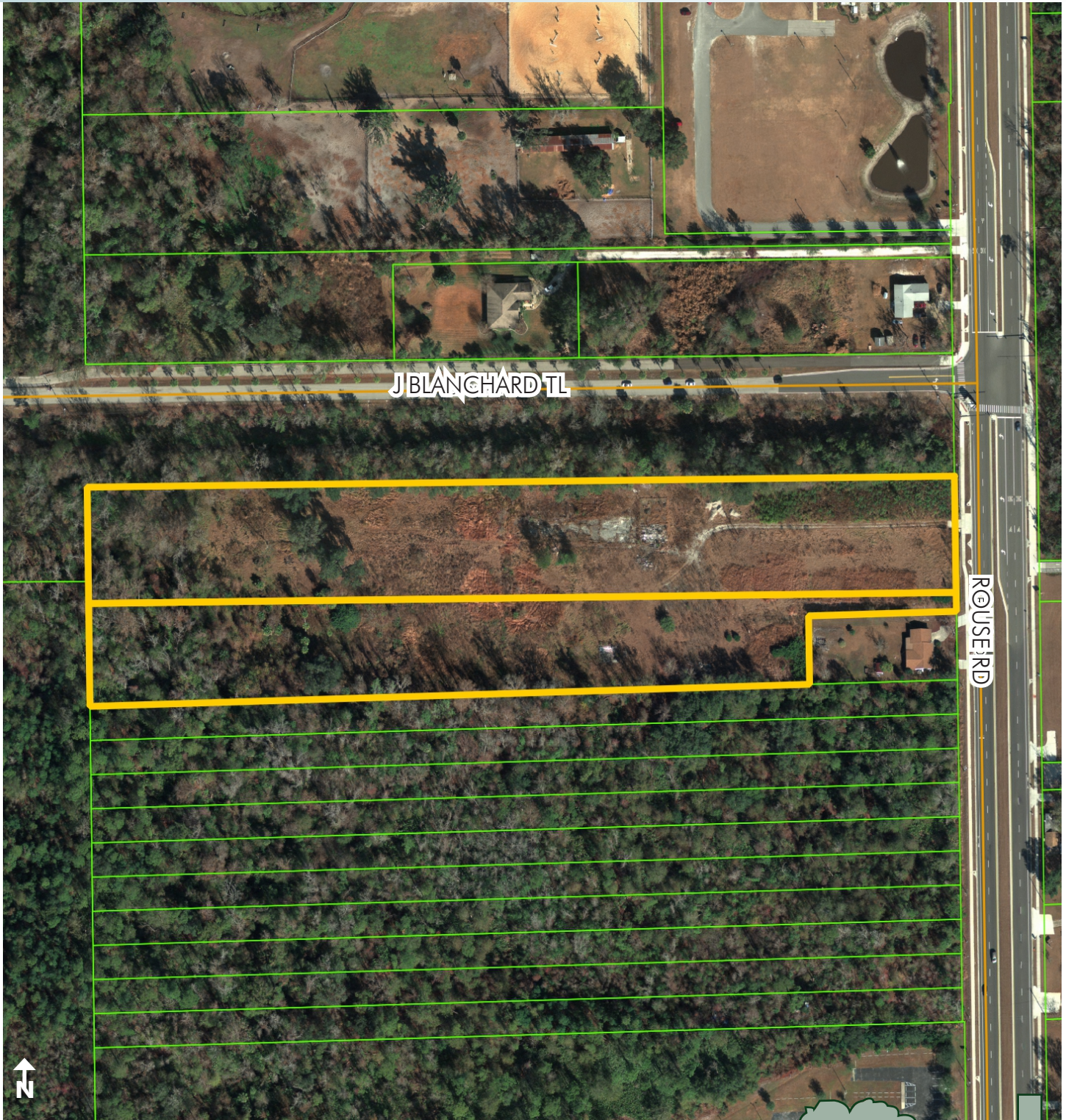
Maury L. Carter & Associates, Inc.
407-422-3144 | www.maurycarter.com



RESIDENTIAL LAND ROUSE RD

8.58± acres (gross)

Orlando, FL



PROPERTY MAP

— Commercial Real Estate Investments | Management | Brokerage | Development | Land

Maury L. Carter & Associates, Inc.
407-422-3144 | www.maurycarter.com

