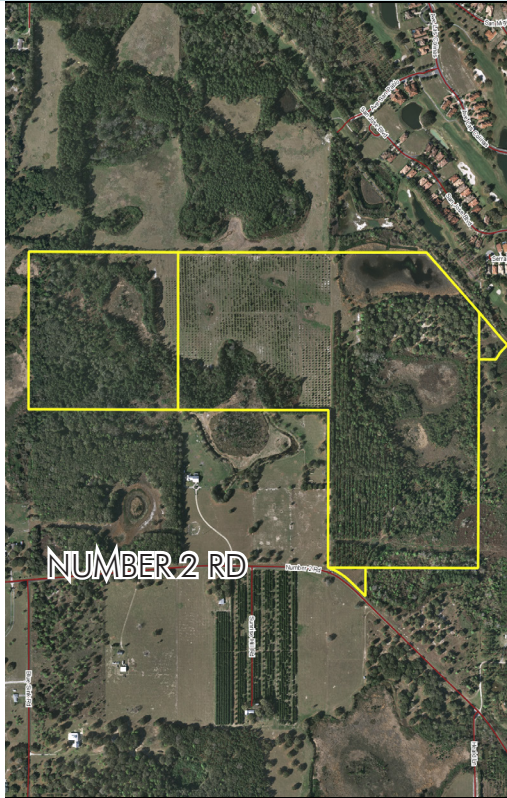


# RESIDENTIAL DEVELOPMENT LAND

160± acres

Lake County, FL



## LOCATION/DESCRIPTION

Located on the north side of Number 2 Road in Yalaha, FL, just north of the City of Clermont and 4 miles north of Florida's Turnpike.

Single Family Residential Development opportunity in the heart of Lake County! The subject is directly adjacent to the Mission Inn Resort and Club, which features two golf courses and several single family subdivisions. The Lake County market continues to improve, with exceptional activity in the area surrounding the resort. Excellent location and physical features give this site great single family residential potential!

## SIZE

160± acres

## PRICE

\$1,800,000 or \$11,250/acre

## ZONING/ FLU

Agriculture, PUD

FLU: Rural, Rural Transition, Urban Low

## ROAD FRONTAGE

415± feet along Number 2 Road

## PARCEL ID's

272025000300003100; 272025000200000200;  
282025000100000100; 272025000200003200

Offering subject to errors, omission, prior sale or withdrawal without notice.

DEVELOPMENT LAND FOR SALE

— Commercial Real Estate Investments | Management | Brokerage | Development | Land —

Maury L. Carter & Associates, Inc.  
407-422-3144 | [www.maurycarter.com](http://www.maurycarter.com)

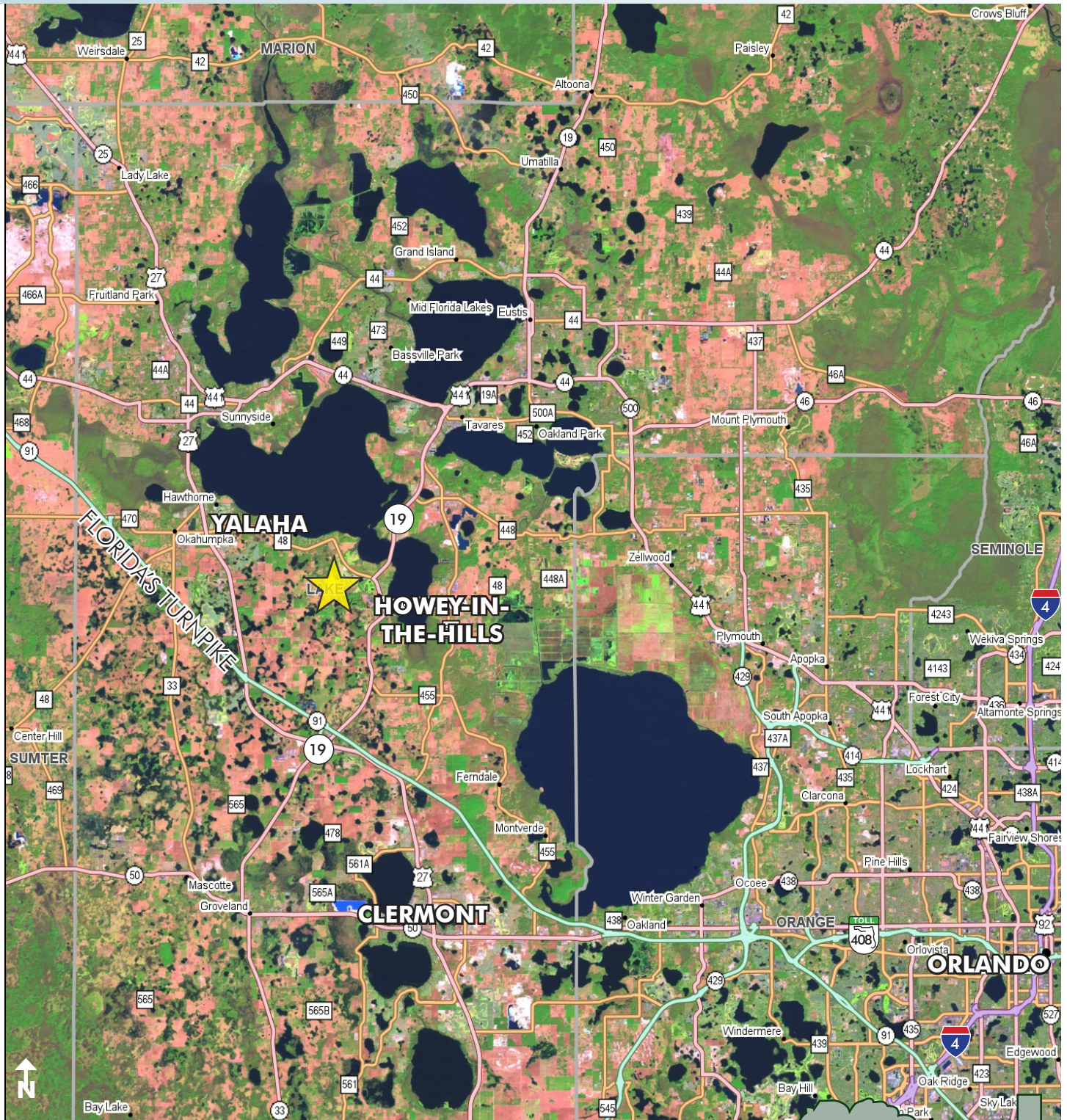




# RESIDENTIAL DEVELOPMENT LAND

160± acres

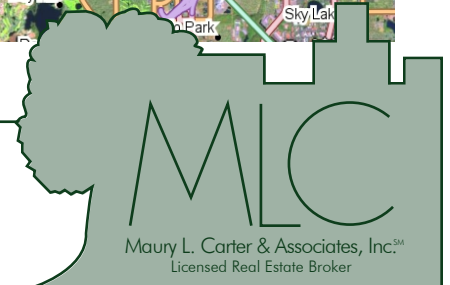
Lake County, FL



LOCATION MAP

— Commercial Real Estate Investments | Management | Brokerage | Development | Land

Maury L. Carter & Associates, Inc.  
407-422-3144 | [www.maurycarter.com](http://www.maurycarter.com)

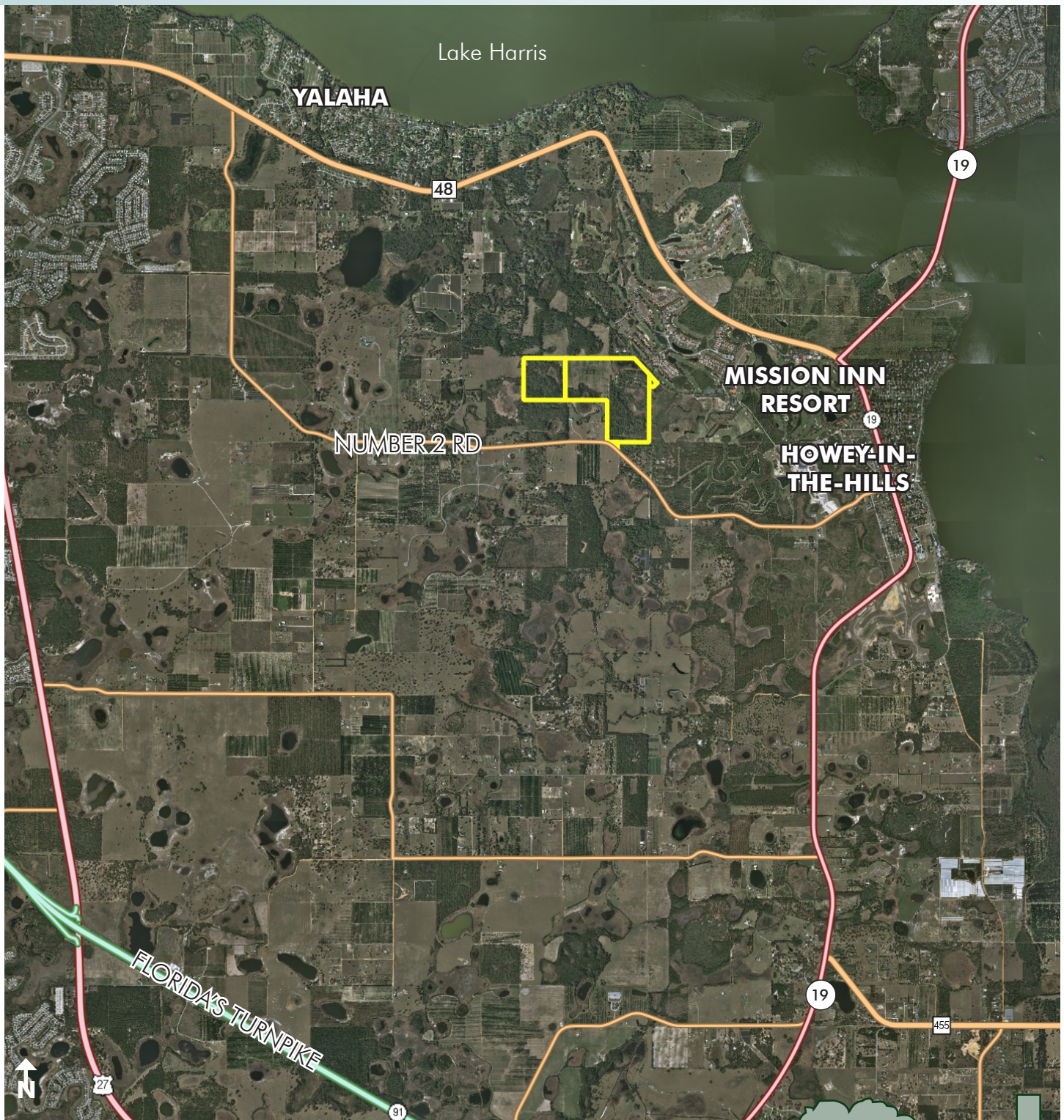




# RESIDENTIAL DEVELOPMENT LAND

160± acres

Lake County, FL



REGIONAL MAP

— Commercial Real Estate Investments | Management | Brokerage | Development | Land —

Maury L. Carter & Associates, Inc.  
407-422-3144 | [www.maurycarter.com](http://www.maurycarter.com)

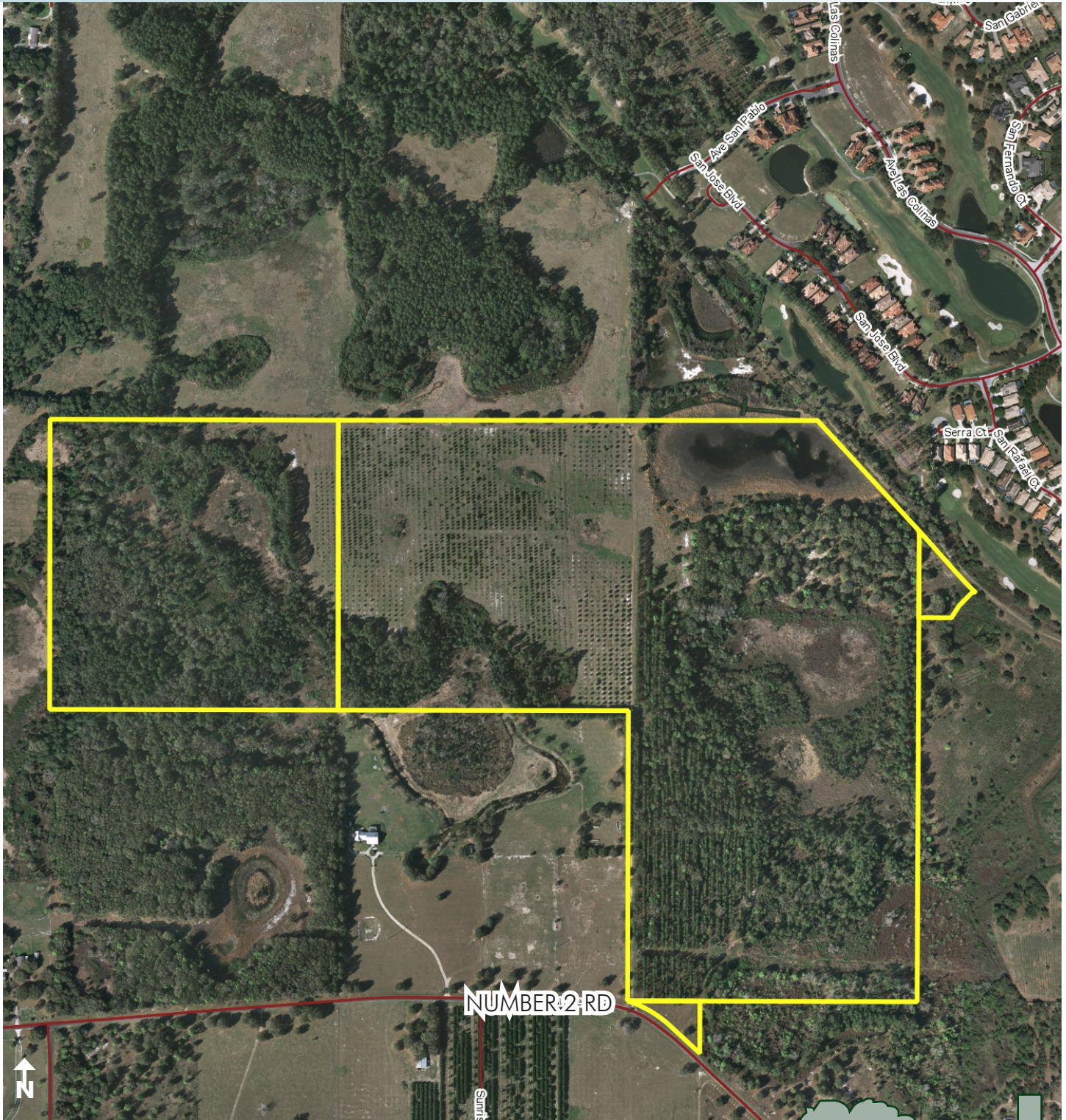




# RESIDENTIAL DEVELOPMENT LAND

160± acres

Lake County, FL



PARCEL MAP

— Commercial Real Estate Investments | Management | Brokerage | Development | Land —

Maury L. Carter & Associates, Inc.  
407-422-3144 | [www.maurycarter.com](http://www.maurycarter.com)

