

PRIME DEVELOPMENT LAND

OSCEOLA COUNTY, 102± acres
St. Cloud, FL



LOCATION

Located between St. Cloud and Harmony on Hwy 192-441

SIZE

102± acres

PRICE

\$3,500,000

ZONING

Mixed Use

ROAD FRONTAGE

2000' ± frontage on Hwy 192

UTILITIES

Off site utility information is available.

DESCRIPTION

Prime development property priced to sell. This property is high and dry with great potential for a mixed use development. Located conveniently between St. Cloud and Harmony with Orlando Int'l. Airport, beaches and theme parks all within a 30 minute drive.

Offering subject to errors, omission, prior sale or withdrawal without notice.

LAND FOR SALE

— Commercial Real Estate Investments | Management | Brokerage | Development | Land —

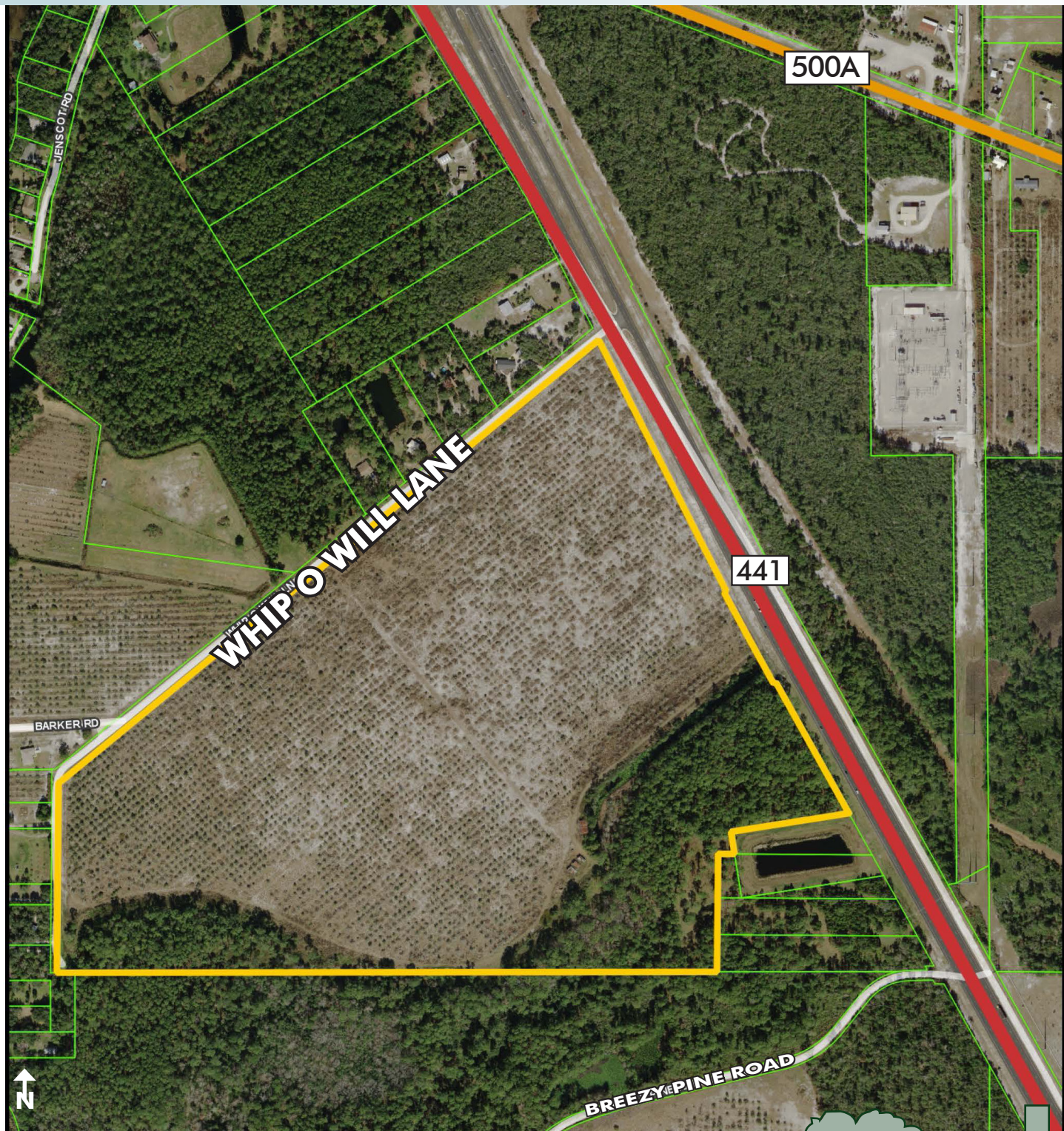
Maury L. Carter & Associates, Inc.
407-422-3144 | www.maurycarter.com



PRIME DEVELOPMENT LAND

OSCEOLA COUNTY, 102± acres

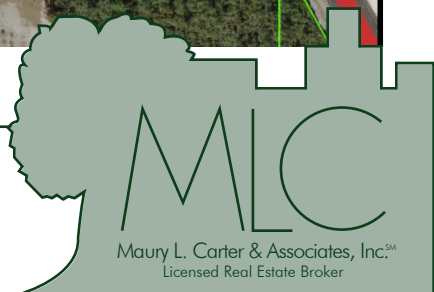
St. Cloud, FL



PROPERTY MAP

— Commercial Real Estate Investments | Management | Brokerage | Development | Land

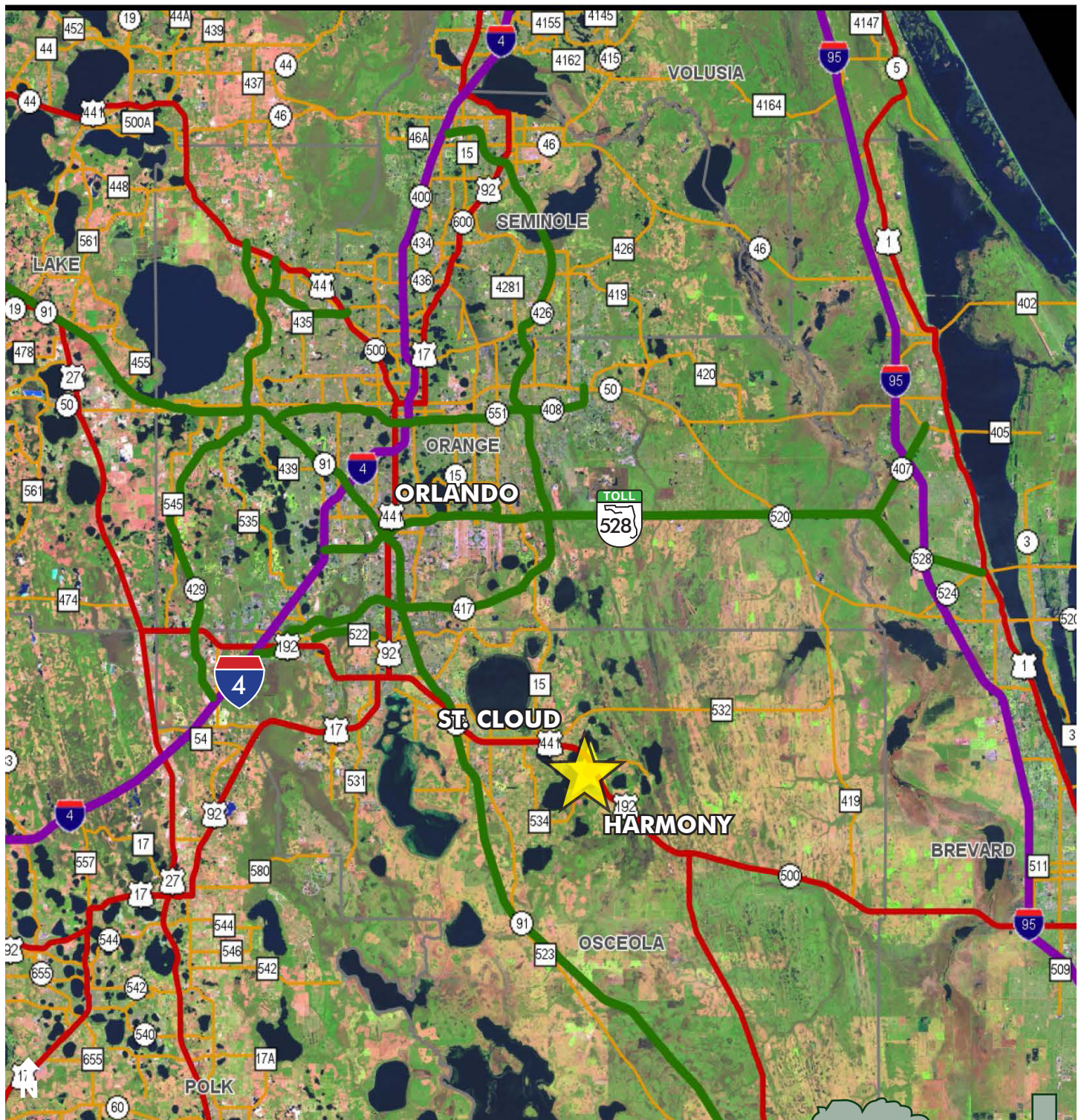
Maury L. Carter & Associates, Inc.
407-422-3144 | www.maurycarter.com



PRIME DEVELOPMENT LAND

OSCEOLA COUNTY, 102± acres

St. Cloud, FL



LOCATION MAP

— Commercial Real Estate Investments | Management | Brokerage | Development | Land

Maury L. Carter & Associates, Inc.

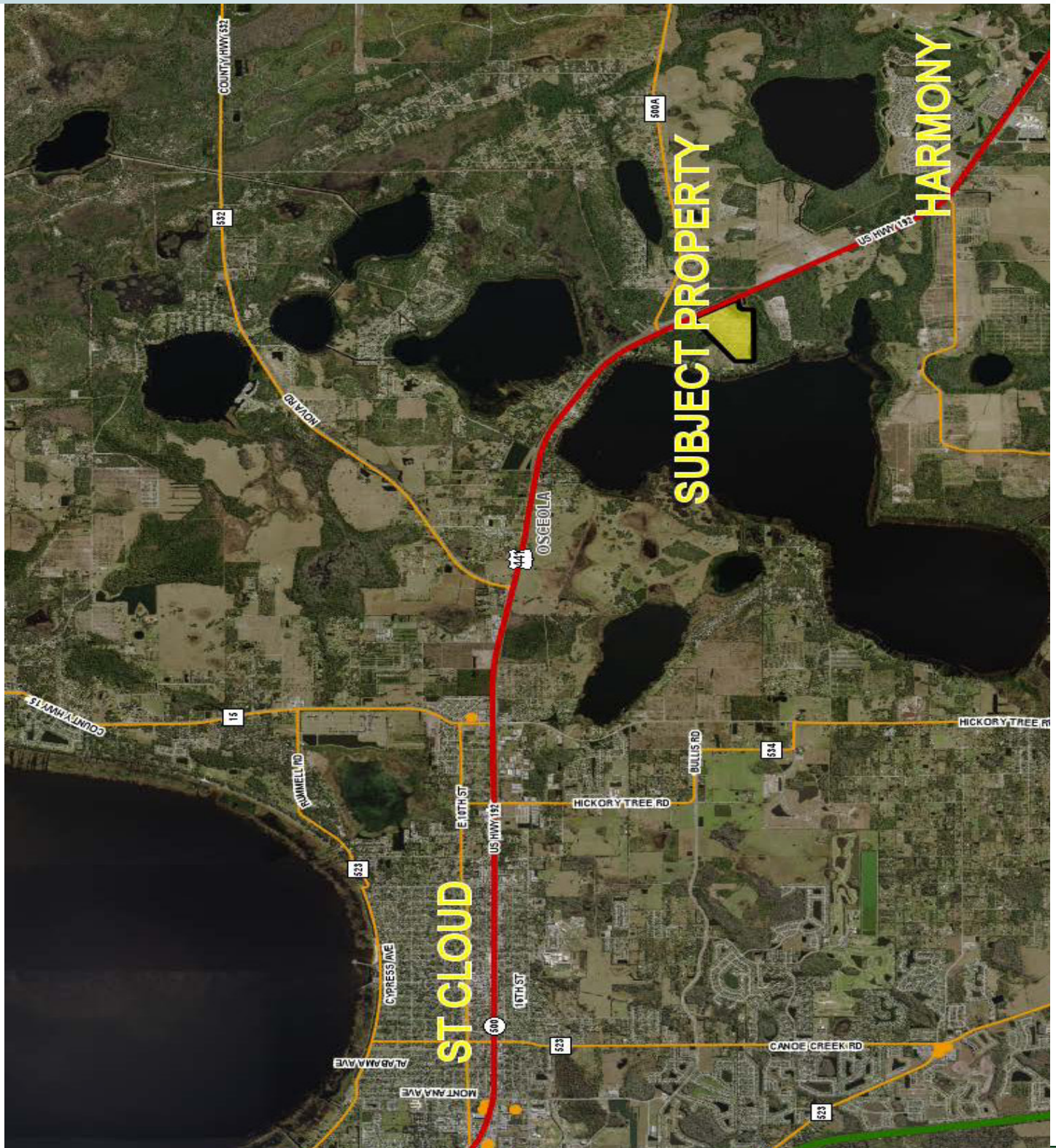
407-422-3144 | www.maurycarter.com



PRIME DEVELOPMENT LAND

OSCEOLA COUNTY, 102± acres

St. Cloud, FL



— Commercial Real Estate Investments | Management | Brokerage | Development | Land

Maury L. Carter & Associates, Inc.
407-422-3144 | www.maurycarter.com

