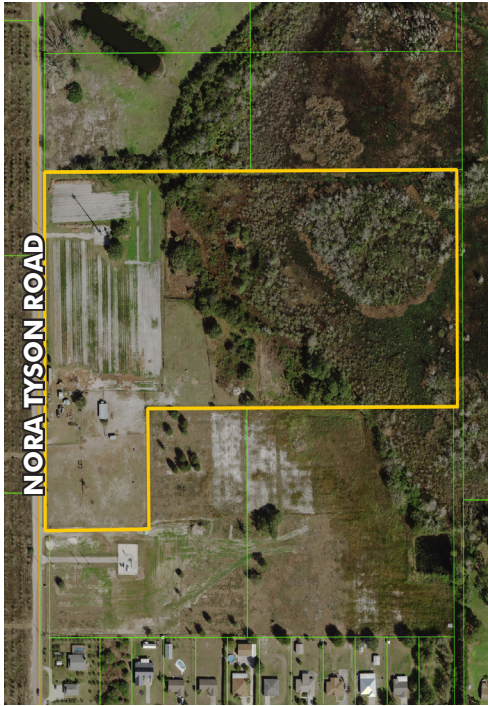


RESIDENTIAL DEVELOPMENT LAND

22± acres on Nora Tyson Road
OSCEOLA COUNTY, St. Cloud, FL



LOCATION

Located on Nora Tyson Road in St. Cloud.

SIZE

22.11 ± acres

PRICE

\$700,000

ZONING/FLU

Low Density Residential - Up to 8 units per acre.

ROAD FRONTAGE

Property front 1,000' ± on Nora Tyson Road and is less than 800' ± from Hwy 192

UTILITIES

Water and sewer available on property

DESCRIPTION

22.11 ± acres with frontage on Nora Tyson Road.
12 acres are high and dry at the front of the property.
Great opportunity in a choice location.

Offering subject to errors, omission, prior sale or withdrawal without notice.

LAND FOR SALE

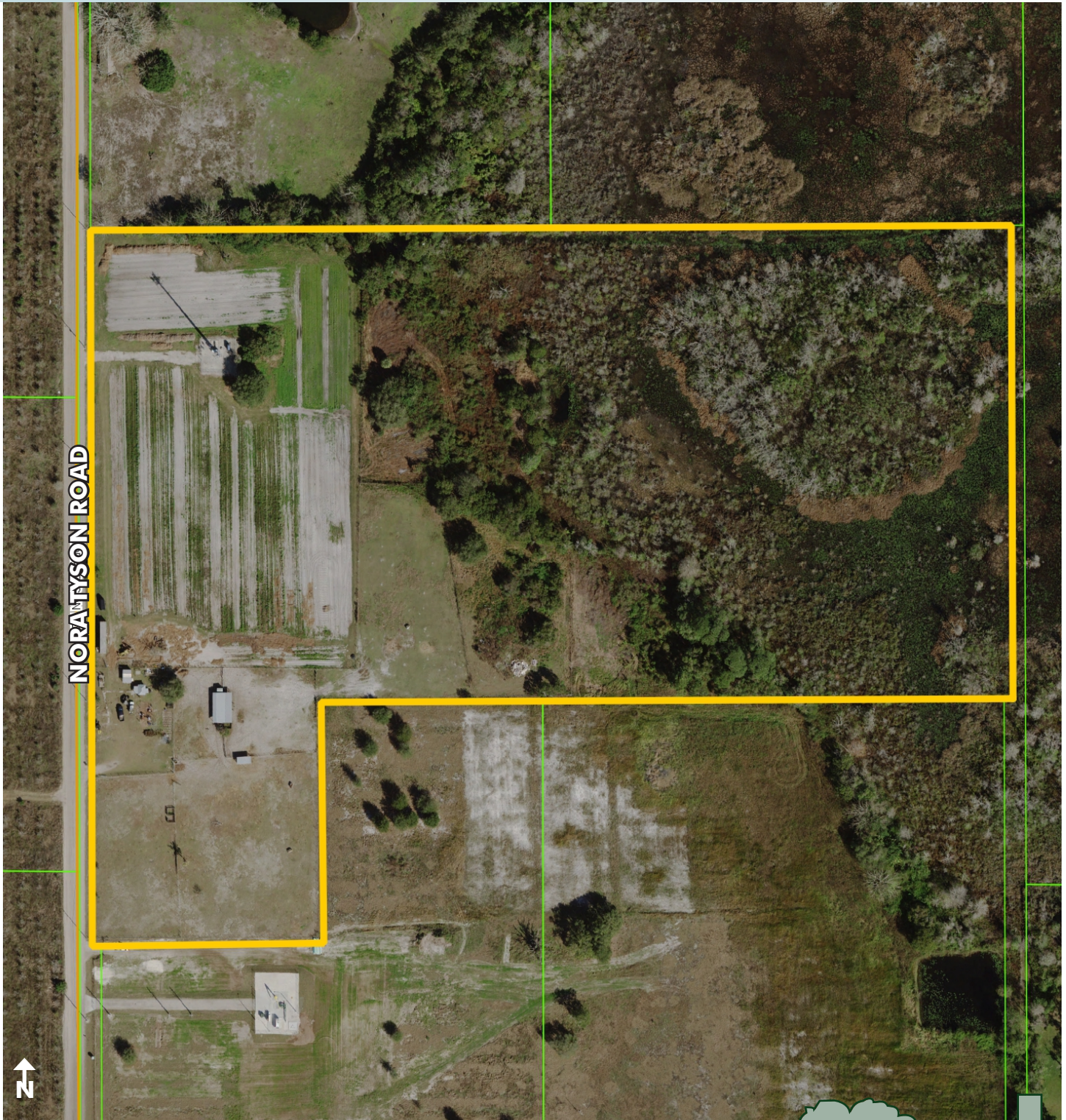
— Commercial Real Estate Investments | Management | Brokerage | Development | Land

Maury L. Carter & Associates, Inc.
407-422-3144 | www.maurycarter.com



RESIDENTIAL DEVELOPMENT LAND

22± acres on Nora Tyson Road
OSCEOLA COUNTY, St. Cloud, FL



PROPERTY MAP

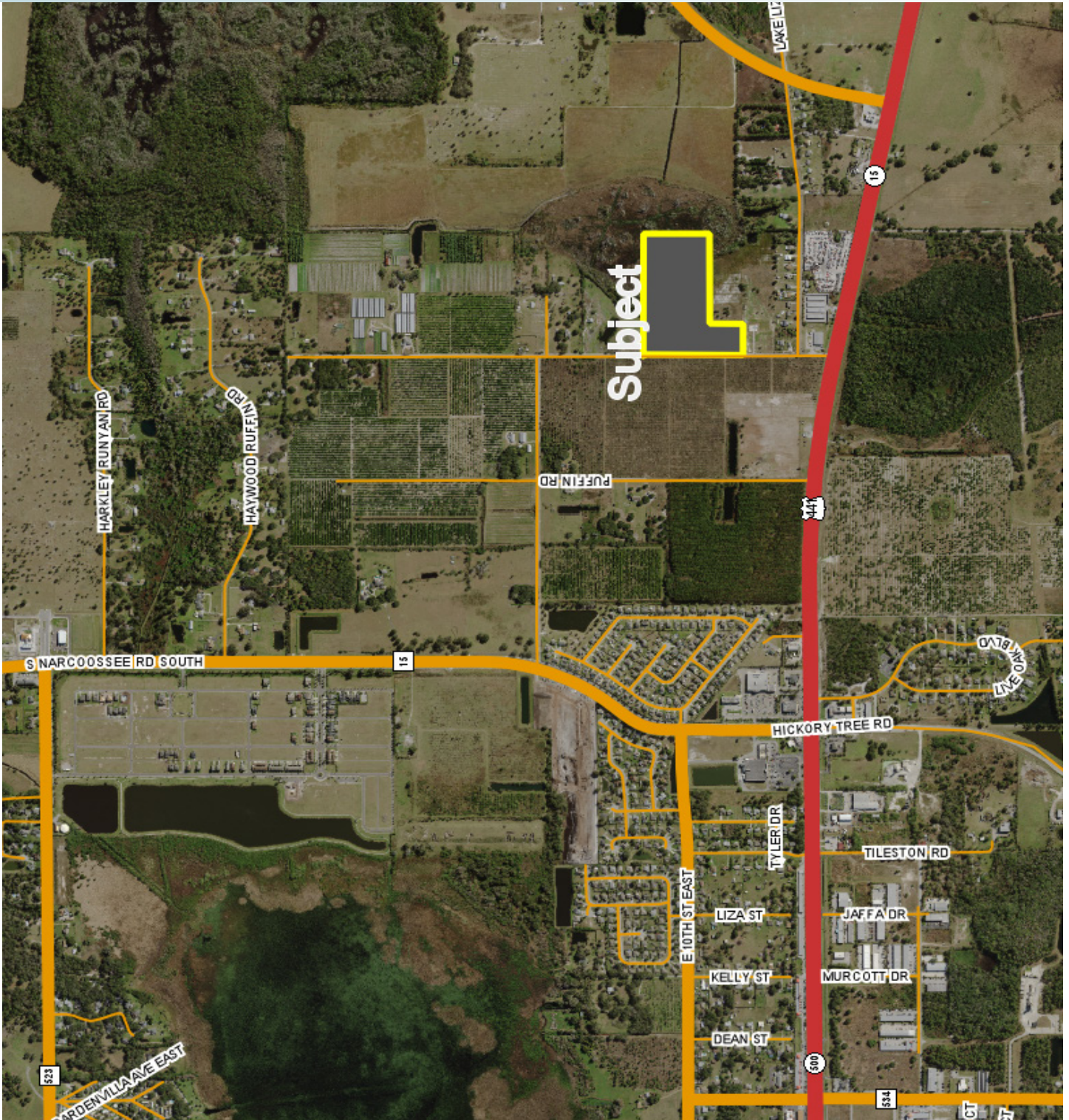
— Commercial Real Estate Investments | Management | Brokerage | Development | Land

Maury L. Carter & Associates, Inc.
407-422-3144 | www.maurycarter.com



RESIDENTIAL DEVELOPMENT LAND

22± acres on Nora Tyson Road
OSCEOLA COUNTY, St. Cloud, FL



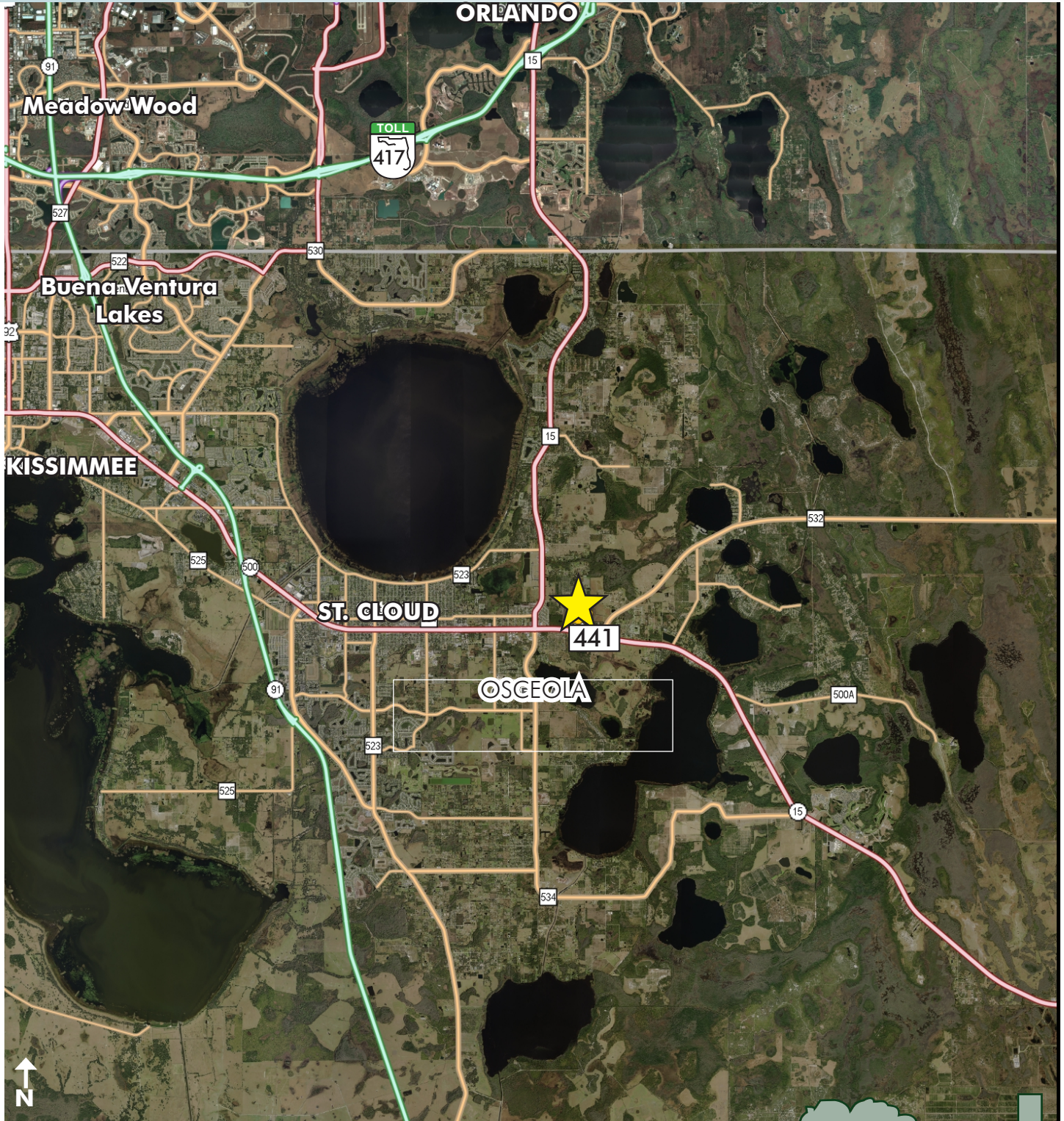
— Commercial Real Estate Investments | Management | Brokerage | Development | Land

Maury L. Carter & Associates, Inc.
407-422-3144 | www.maurycarter.com



RESIDENTIAL DEVELOPMENT LAND

22± acres on Nora Tyson Road
OSCEOLA COUNTY, St. Cloud, FL



LOCATION MAP

— Commercial Real Estate Investments | Management | Brokerage | Development | Land

Maury L. Carter & Associates, Inc.
407-422-3144 | www.maurycarter.com

