

# RESIDENTIAL DEVELOPMENT LAND

19.45± acres

2218 Grayson Drive, Orlando, FL 32817



## SIZE

19.45± acres

## PRICE

\$1,650,000

## ZONING

R-1, Residential

## UTILITIES

Water, Sewer, Septic available

## DESCRIPTION/LOCATION

Residential land for an infill subdivision. Majority of land is high and dry. Adjacent to the south of J. Blanchard park and close proximity to UCF. Located near the intersection of Rouse Road and Colonial Drive. Excellent location for a residential subdivision.

Offering subject to errors, omission, prior sale or withdrawal without notice.

LAND FOR SALE

— Commercial Real Estate Investments | Management | Brokerage | Development | Land —

Maury L. Carter & Associates, Inc.  
407-422-3144 | [www.maurycarter.com](http://www.maurycarter.com)

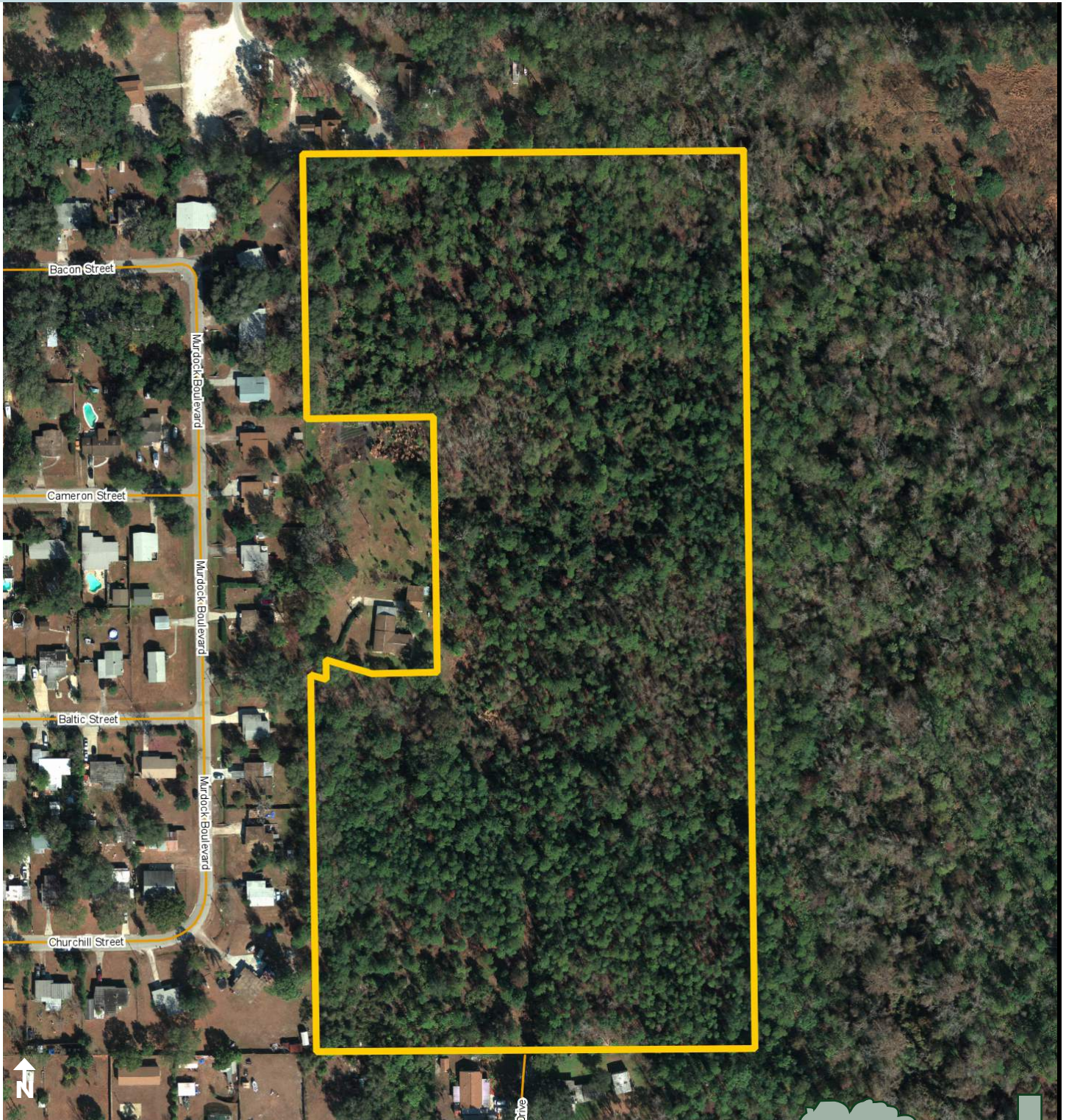




# RESIDENTIAL DEVELOPMENT LAND

19.45± acres

Orlando, FL



PROPERTY MAP

— Commercial Real Estate Investments | Management | Brokerage | Development | Land

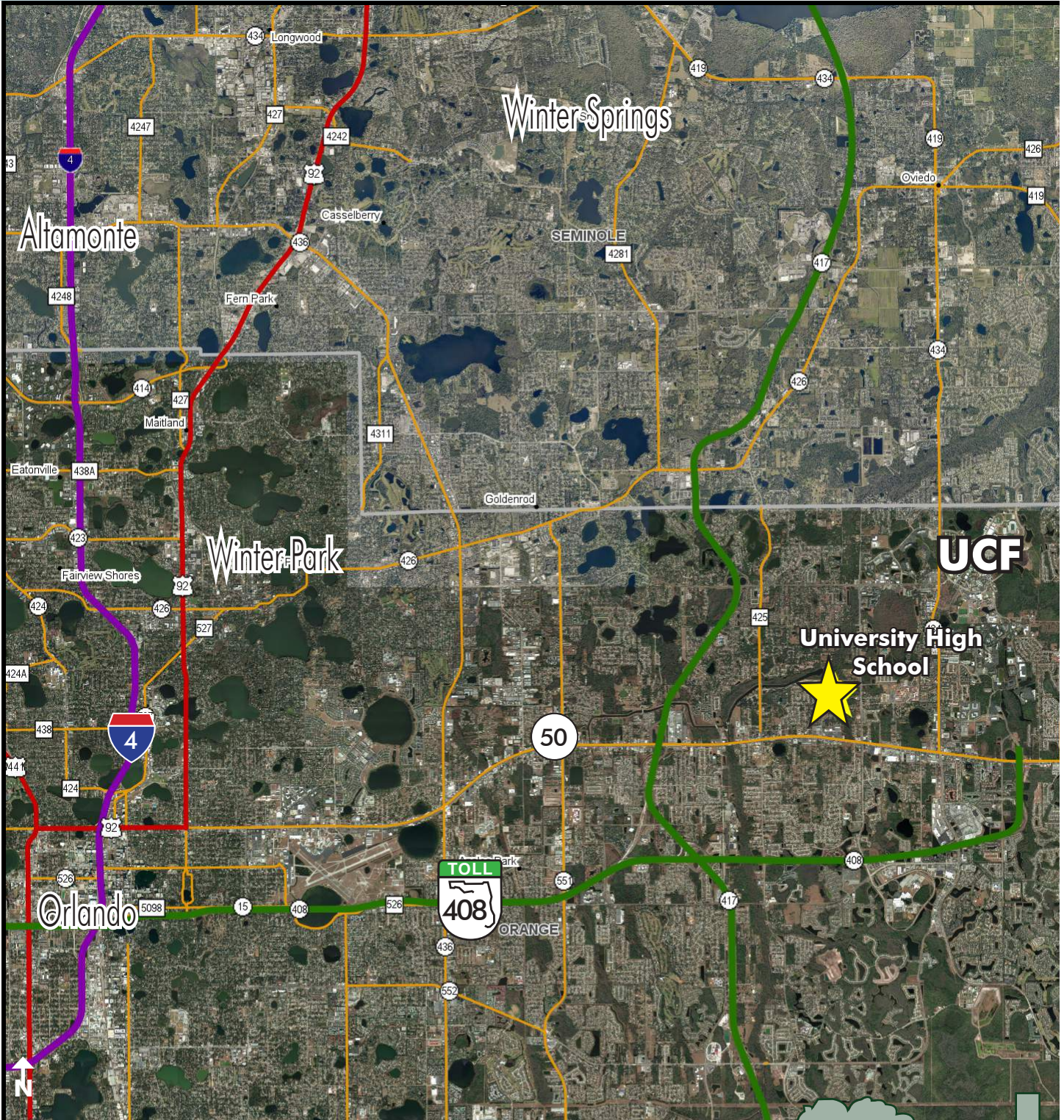
Maury L. Carter & Associates, Inc.  
407-422-3144 | [www.maurycarter.com](http://www.maurycarter.com)





# RESIDENTIAL DEVELOPMENT LAND

19.45± acres  
Orlando, FL



REGIONAL MAP

— Commercial Real Estate Investments | Management | Brokerage | Development | Land

Maury L. Carter & Associates, Inc.  
407-422-3144 | [www.maurycarter.com](http://www.maurycarter.com)

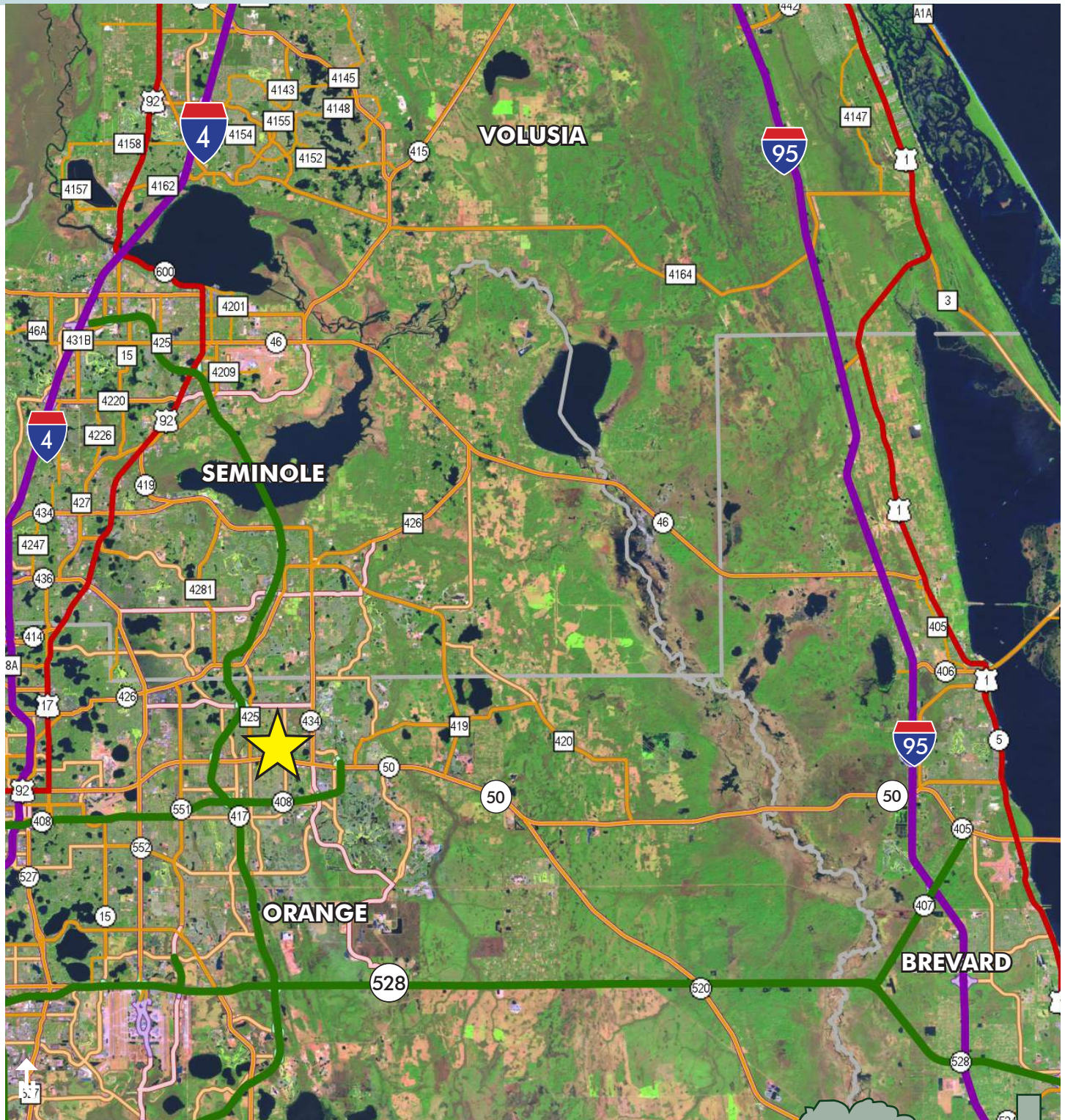




# RESIDENTIAL DEVELOPMENT LAND

19.45± acres

Orlando, FL



LOCATION MAP

— Commercial Real Estate Investments | Management | Brokerage | Development | Land

Maury L. Carter & Associates, Inc.  
407-422-3144 | [www.maurycarter.com](http://www.maurycarter.com)

