

# MULTI-FAMILY DEVELOPMENT LAND

1.95± acres

Winter Spring, FL - Seminole County



## LOCATION

The property is located on the north side of Excelsior Parkway and east of Moss Road within the City Limits of Winter Springs, Florida.

## SIZE

1.95± acres

The buildable land totals 1.95± acres however, the sellers also own the .62± acre ROW (Excelsior Parkway).

## PRICE

\$360,000

## ZONING

The zoning of this property is R-3 Multi-family. The Future Land Use is medium density residential which allows up to 9 units per acre. Applying the density to the 1.95± acres results in 17.55 developable units.

## UTILITIES

An 8" PVC water line is located along the north side of Excelsior Parkway and an 8" sewer main is located along the north property line.

## DESCRIPTION

The property was originally developed as a business park however, the land use was changed to medium density residential. The neighborhood is primarily developed with medium residential use.

Offering subject to errors, omission, prior sale or withdrawal without notice.

LAND FOR SALE

— Commercial Real Estate Investments | Management | Brokerage | Development | Land

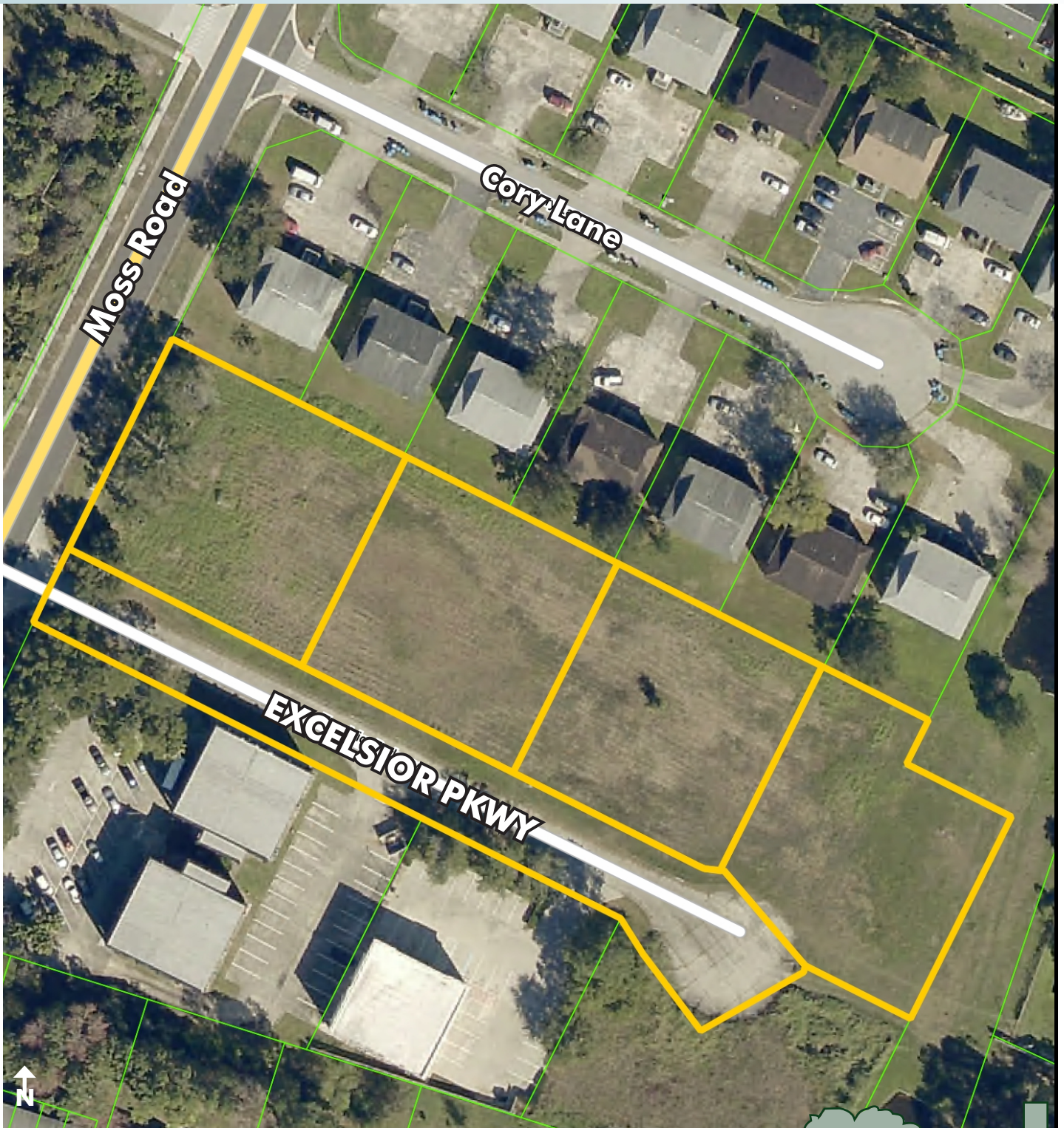
Maury L. Carter & Associates, Inc.  
407-422-3144 | [www.maurycarter.com](http://www.maurycarter.com)



# MULTI-FAMILY DEVELOPMENT LAND

1.95± acres

Winter Spring, FL - Seminole County



PROPERTY MAP

— Commercial Real Estate Investments | Management | Brokerage | Development | Land

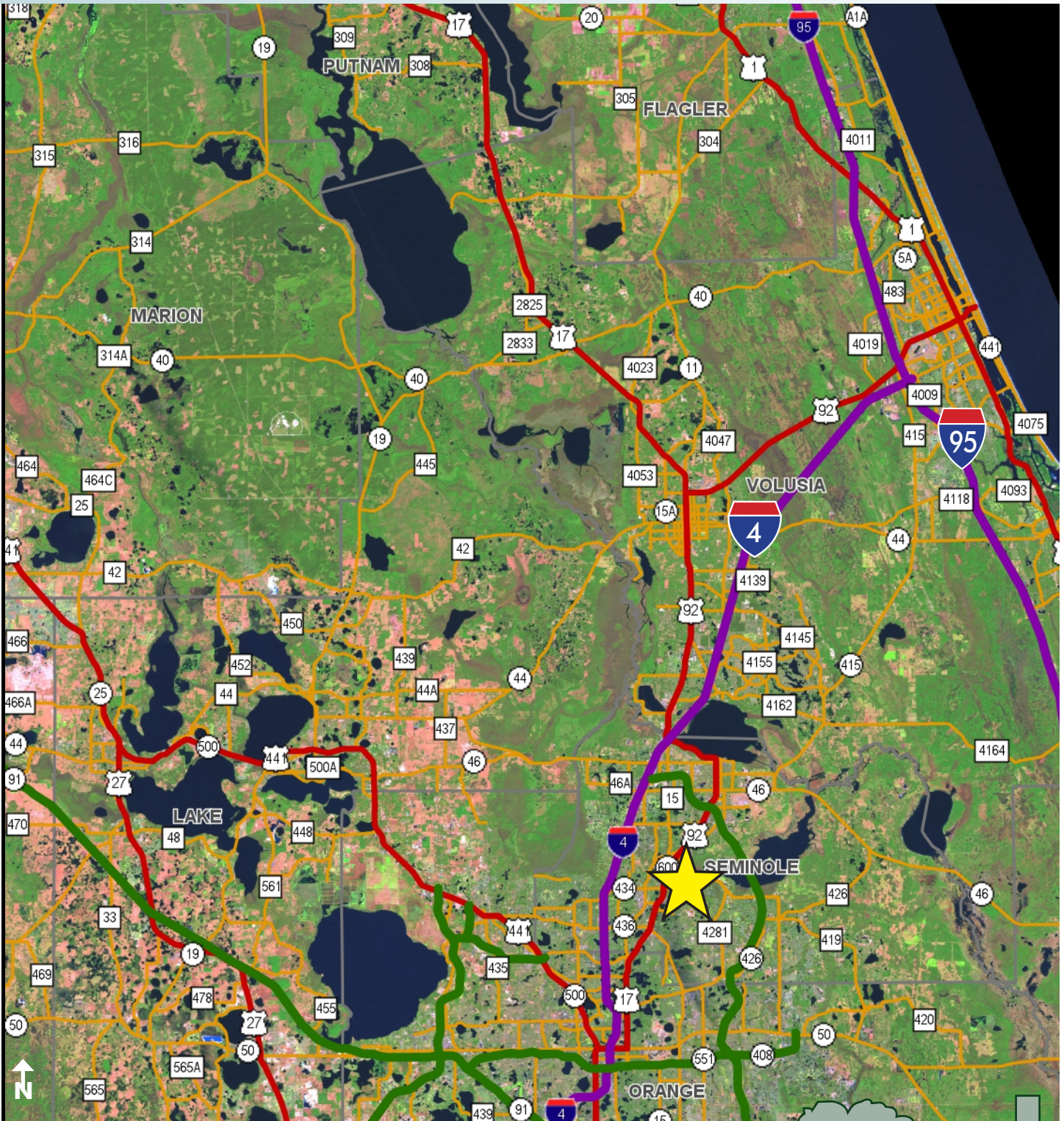
Maury L. Carter & Associates, Inc.  
407-422-3144 | [www.maurycarter.com](http://www.maurycarter.com)



# MULTI-FAMILY DEVELOPMENT LAND

1.95± acres

Winter Spring, FL - Seminole County



LOCATION MAP

— Commercial Real Estate Investments | Management | Brokerage | Development | Land

Maury L. Carter & Associates, Inc.  
407-422-3144 | [www.maurycarter.com](http://www.maurycarter.com)

