

WINONA RANCH 8.05 ± ACRES

Part of 75± acre Winona Ranch Tract
Volusia County, FL

**UNDER
CONTRACT**

LAND FOR SALE



LOCATION

Main entrance located on Camp Winona Road. Property is located in north Volusia County, just two miles SW of the intersection of Hwy 11 and Hwy 40. 1 hour to Orlando, 2 hours to Tampa, 35 minutes to Daytona, 55 minutes to New Smyrna Beach, 1 hour to Ocala.

SIZE

8.05± acre lakefront residential lot

Under Contract

(Lot actually 10.1 ± acres, but marketed as 8.05± acres due to county easement)

PRICE

\$95,000

ZONING

A-1 (1 unit/10 acres)

LAKE FRONTAGE/ACCESS

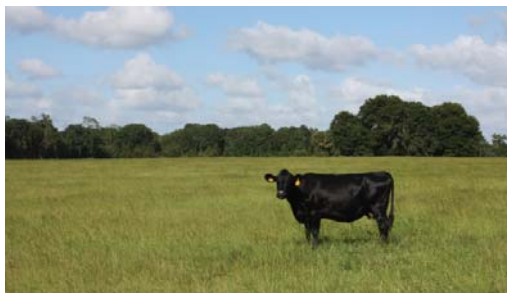
350'± of lake frontage on Lake Winona. Lake Winona, 100± acres in size, is spring-fed, sand bottom, and is "walk off into the water" high banked frontage.

DESCRIPTION

The Winona 8.05± acre lot is one of the most desirable lakefront properties currently offered in the State of Florida. Hobby farmers or ranchers, fishermen, outdoor enthusiasts, agricultural users and others, take notice! This property offers opportunities for all!

Enjoy exclusion, peacefulness and quiet surroundings on your private acreage consisting of improved pasture land, oaks and waterfront. Build your dream home overlooking the waters of Lake Winona. Water ski, wake board, or fish on pristine Lake Winona.

Offering subject to errors, omission, prior sale or withdrawal without notice.



— Commercial Real Estate Investments | Management | Brokerage | Development | Land

Maury L. Carter & Associates, Inc.
407-422-3144 | www.maurycarter.com



Maury L. Carter & Associates, Inc.TM
Licensed Real Estate Broker

WINONA RANCH 8.05 ± ACRES

Part of 75± acre Winona Ranch Tract
Volusia County, FL

**UNDER
CONTRACT**



PARCEL MAP

— Commercial Real Estate Investments | Management | Brokerage | Development | Land

Maury L. Carter & Associates, Inc.
407-422-3144 | www.maurycarter.com



WINONA RANCH 8.05 ± ACRES

Part of 75± acre Winona Ranch Tract
Volusia County, FL

**UNDER
CONTRACT**



LOCATION MAP

— Commercial Real Estate Investments | Management | Brokerage | Development | Land

Maury L. Carter & Associates, Inc.
407-422-3144 | www.maurycarter.com

