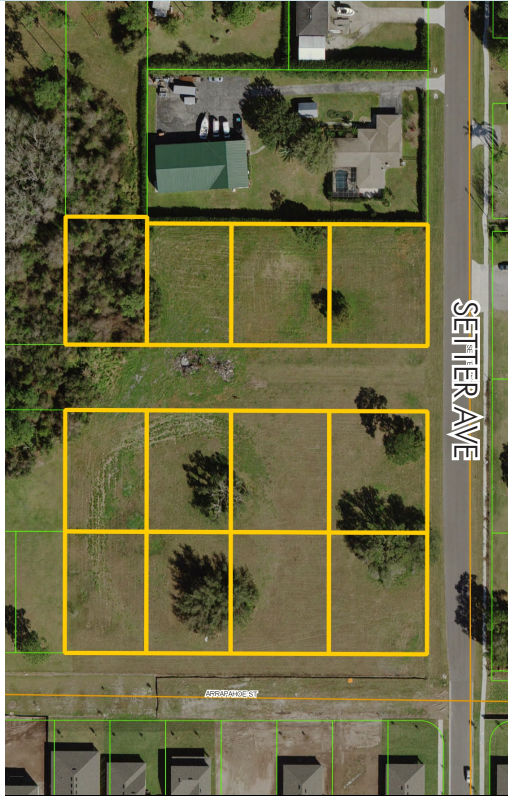


# RESIDENTIAL DEVELOPMENT LAND WITHIN MINUTES OF MEDICAL CITY

4.5± acres • Osceola County, FL



## LOCATION/DESCRIPTION

Located on Setter Ave, approx. 1/2 mile east of Narcoossee Rd. Immediate access to major roadways: 7 miles to FL 417 with access to SR 528, Florida's Turnpike, I-4 and US 441. 20 min to Orlando Int'l Airport, 30 min to Downtown Orlando and the tourist corridor.

Within close proximity of the booming Orlando Int'l Airport/Medical City/ Lake Nona Area. Lake Nona/Medical City has already generated approx. 5,000 jobs, with 25,000 more expected by 2029.

## SIZE

4.5± total acres

In the approval process for 18 lots

## PRICE

\$500,000

## ZONING

Residential

## UTILITIES

At site.

Offering subject to errors, omission, prior sale or withdrawal without notice.

LAND FOR SALE

— Commercial Real Estate Investments | Management | Brokerage | Development | Land —

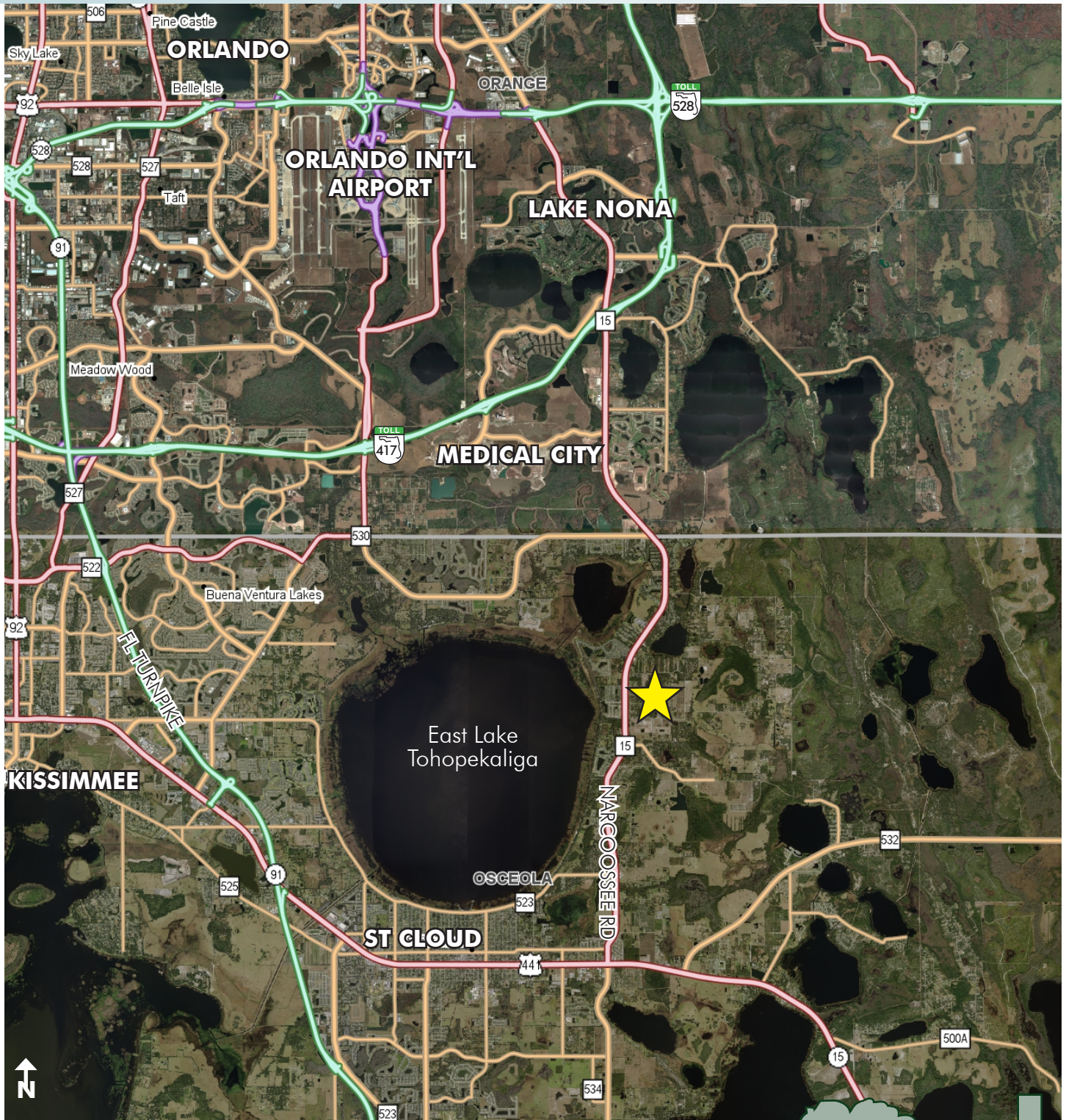
Maury L. Carter & Associates, Inc.  
407-422-3144 | [www.maurycarter.com](http://www.maurycarter.com)





# RESIDENTIAL DEVELOPMENT LAND WITHIN MINUTES OF MEDICAL CITY

4.5± acres • Osceola County, FL



LOCATION MAP

— Commercial Real Estate Investments | Management | Brokerage | Development | Land —

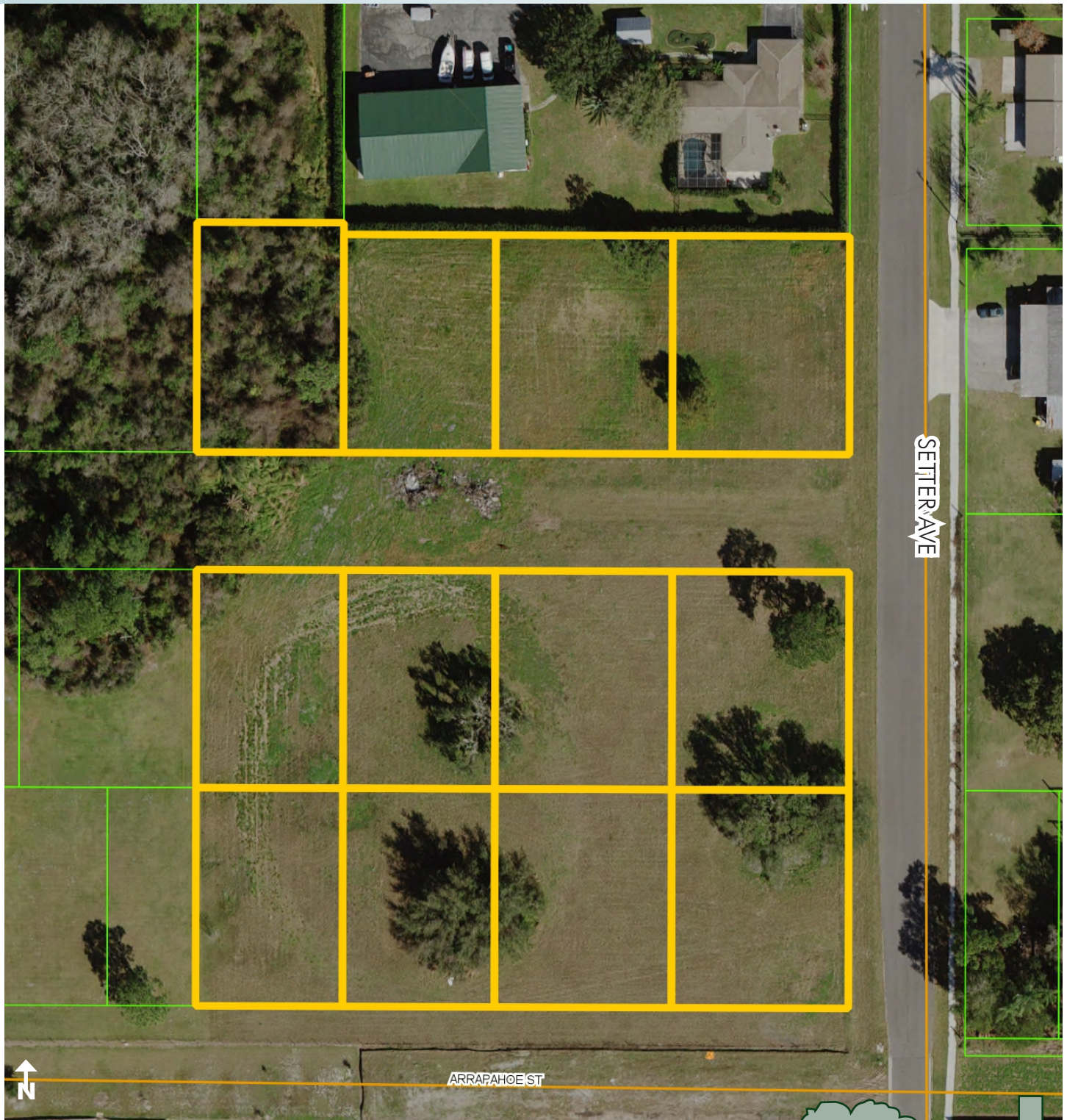
Maury L. Carter & Associates, Inc.  
407-422-3144 | [www.maurycarter.com](http://www.maurycarter.com)





# RESIDENTIAL DEVELOPMENT LAND WITHIN MINUTES OF MEDICAL CITY

4.5± acres • Osceola County, FL



PROPERTY MAP

— Commercial Real Estate Investments | Management | Brokerage | Development | Land

Maury L. Carter & Associates, Inc.  
407-422-3144 | [www.maurycarter.com](http://www.maurycarter.com)

