

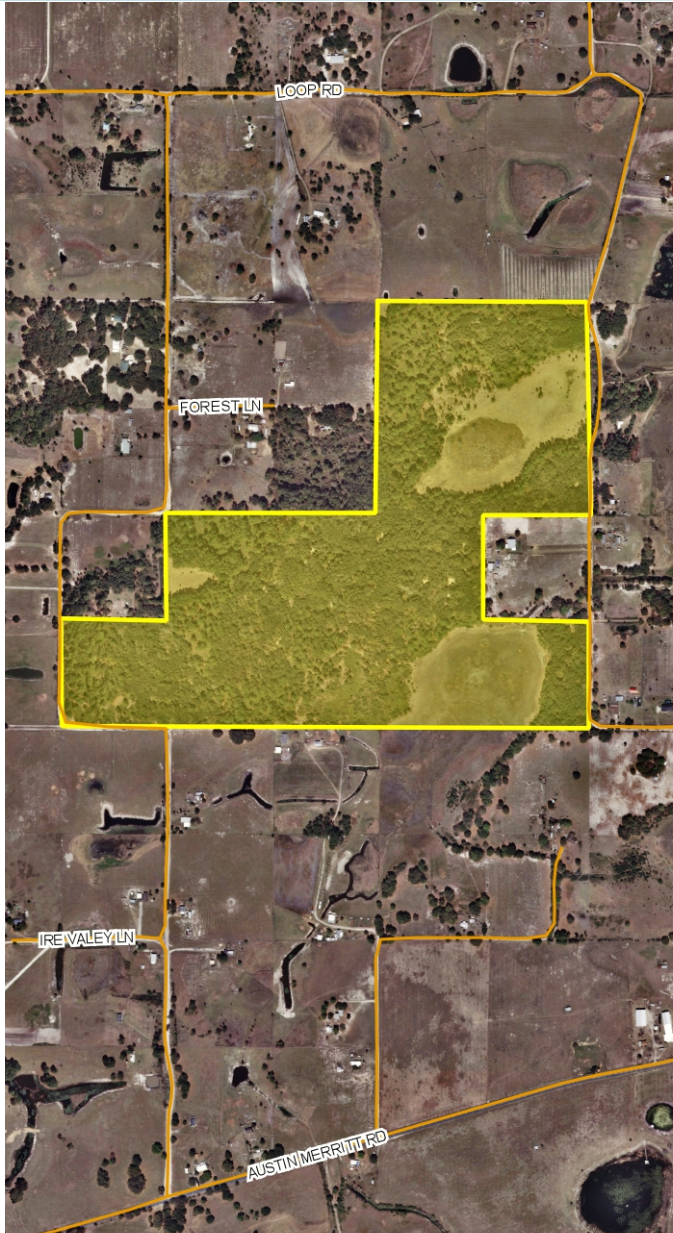
# LAKE COUNTY LOOP ROAD

120± acres

Lake County, FL

**MAJOR PRICE  
REDUCTION**

LAND FOR SALE



## LOCATION

One mile west of Highway 33 and  
1/2 mile north of Austin Merritt Road.  
Bounded on the east and west by Loop  
Road.

## SIZE

120± acres

## PRICE

**NOW \$660,000 (\$5,500/acre)**

*54% Reduction in price!*

**WAS \$1,440,000 (\$12,000/acre)**

## ZONING/FUTURE LAND USE

Zoning: Agricultural (1du/5 acres)

FLU: Rural (1du/5 acres)

## ROAD FRONTAGE

1,800'± on Loop Road

1,200'± on East Loop Road

Offering subject to errors, omission, prior sale or  
withdrawal without notice.

— Commercial Real Estate Investments | Management | Brokerage | Development | Land —

**Maury L. Carter & Associates, Inc.**

407-422-3144 | [www.maurycarter.com](http://www.maurycarter.com)



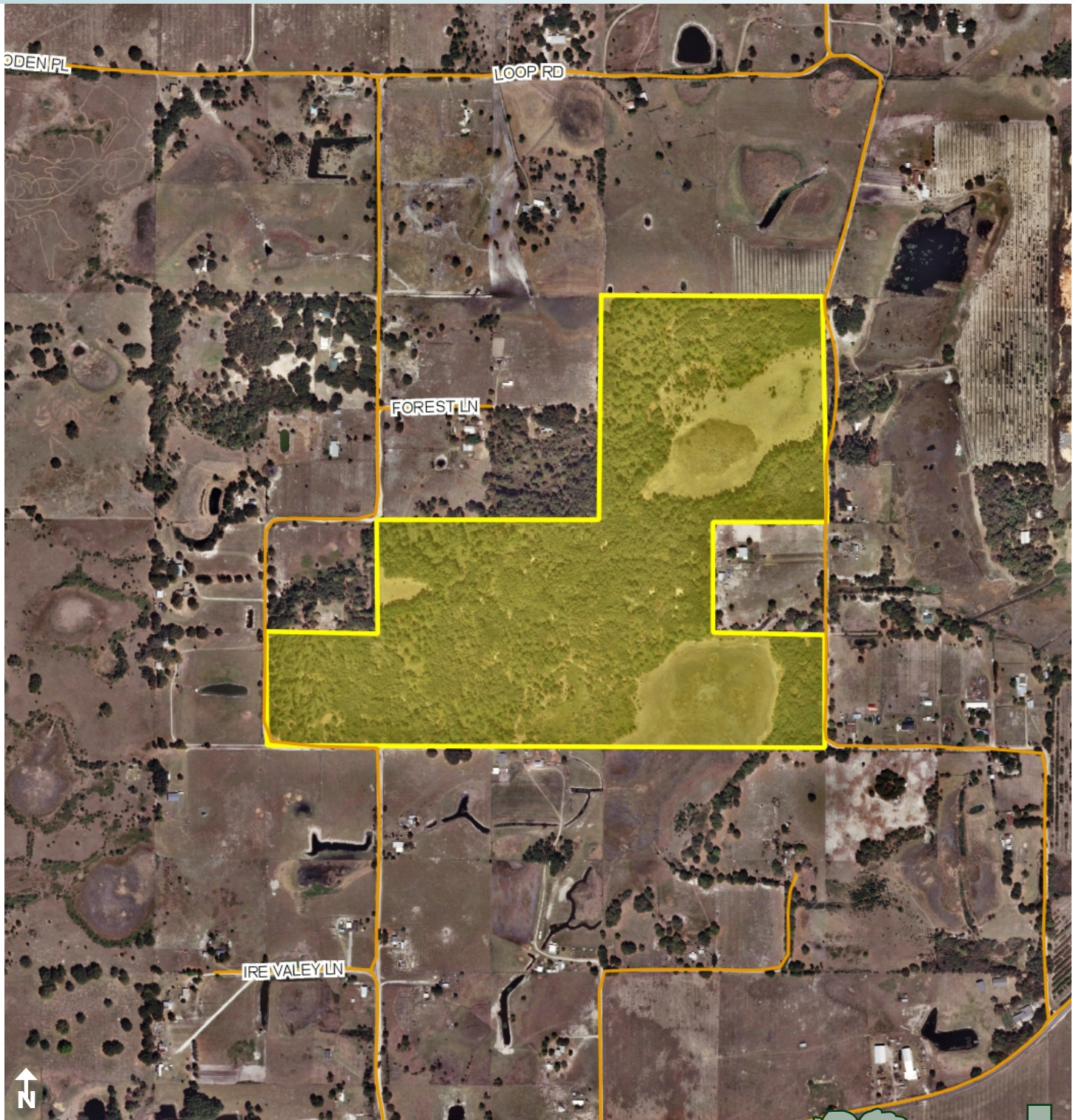


# LAKE COUNTY LOOP ROAD

120± acres

Lake County, FL

**MAJOR PRICE  
REDUCTION**



PROPERTY MAP

— Commercial Real Estate Investments | Management | Brokerage | Development | Land —

Maury L. Carter & Associates, Inc.  
407-422-3144 | [www.maurycarter.com](http://www.maurycarter.com)





# LAKE COUNTY LOOP ROAD

120± acres

Lake County, FL

**MAJOR PRICE  
REDUCTION**



LOCATION MAP

— Commercial Real Estate Investments | Management | Brokerage | Development | Land

**Maury L. Carter & Associates, Inc.**  
407-422-3144 | [www.maurycarter.com](http://www.maurycarter.com)

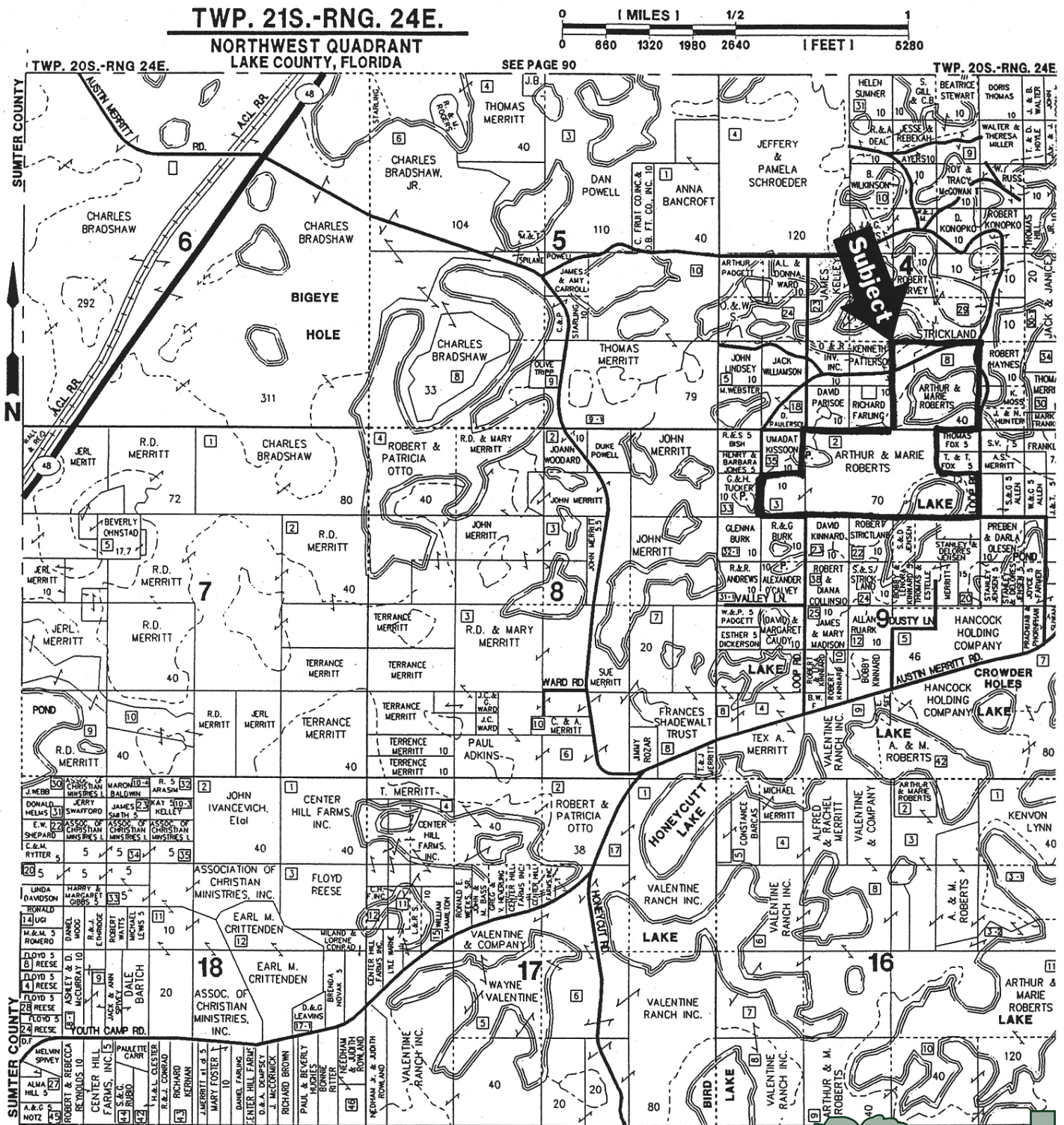




# LAKE COUNTY LOOP ROAD

120± acres  
Lake County, FL

**MAJOR PRICE  
REDUCTION**



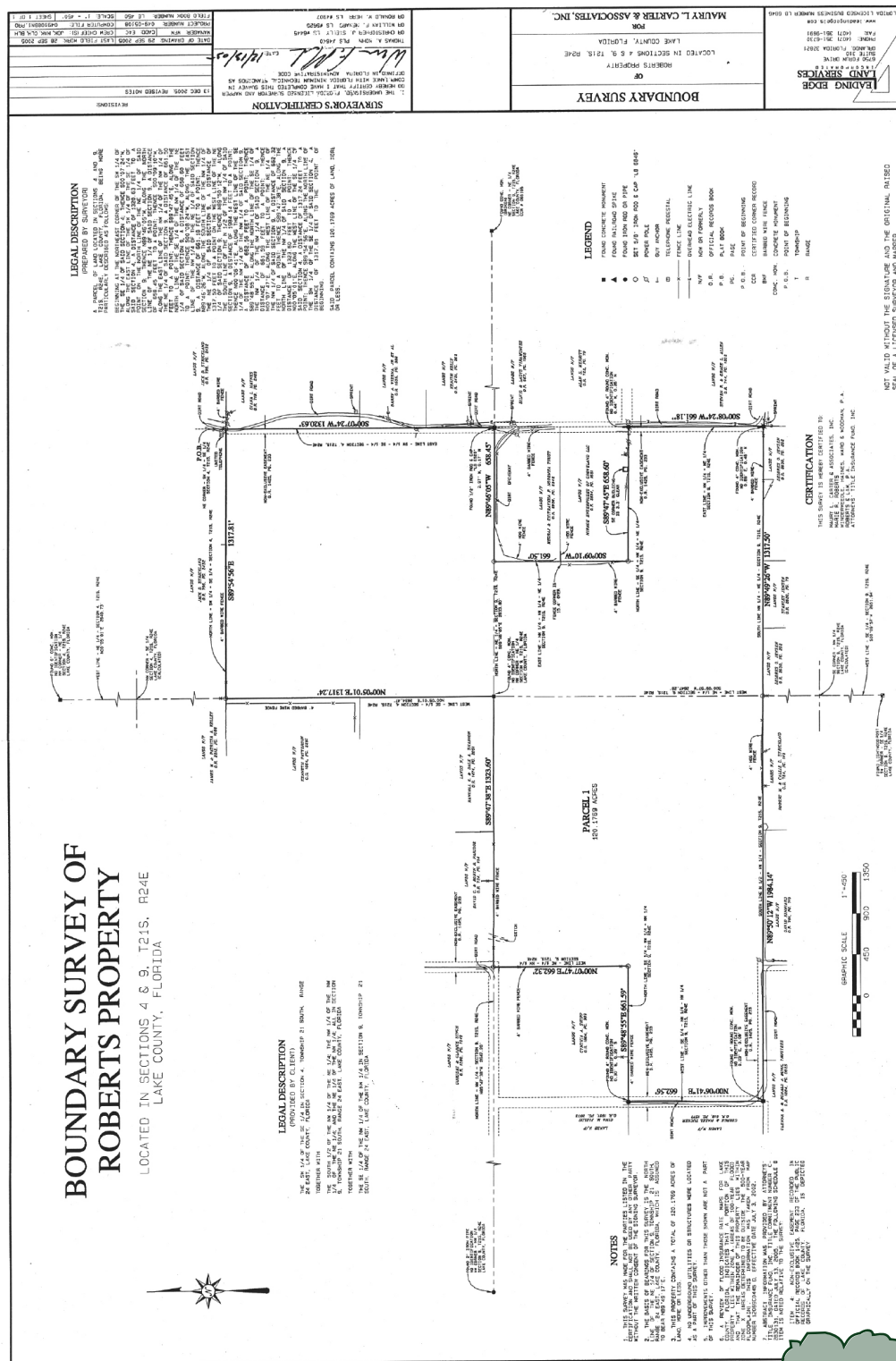
— Commercial Real Estate Investments | Management | Brokerage | Development | Land —

**Maury L. Carter & Associates, Inc.**  
407-422-3144 | [www.maurycarter.com](http://www.maurycarter.com)



120± acres  
Lake County, FL

**MAJOR PRICE  
REDUCTION**



Maury L. Carter & Associates, Inc.  
407-422-3144 | [www.maurycarter.com](http://www.maurycarter.com)

