

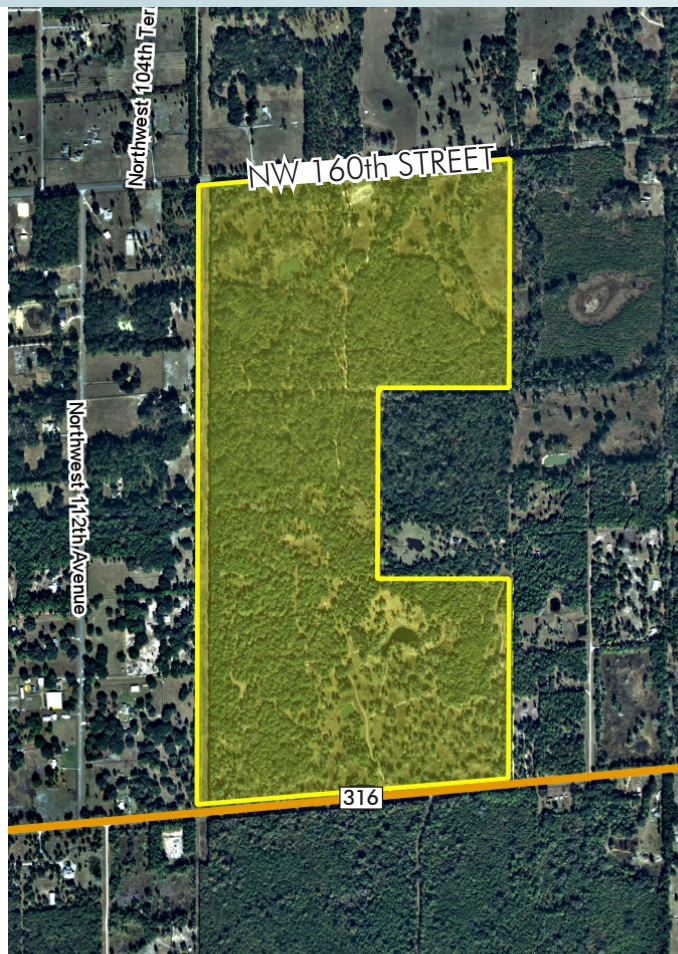
AGRICULTURAL LAND ON CR 316

275± acres

Marion County, FL

**MAJOR PRICE
REDUCTION**

LAND FOR SALE



LOCATION

Located on the north side of County Road 316 and on the south side of NW 160th Street, approximately 2 miles west of County Road 329 and 4 miles west of Interstate 75.

SIZE

275± acres (will consider subdividing)

PRICE

Was: \$2,750,000 (\$10,000/acre)

Reduced to \$1,643,125 (\$5,975/acre)

NOW \$1,506,000 (\$5,475/acre)

45% Total reduction in price!

ZONING

A-1 - General Agriculture. Lot size: minimum of 10 acres, minimum width of 150'.

FUTURE LAND USE

Rural (1 du/10 acres)

ROAD FRONTAGE

2,633'± on CR 316

2,616'± on NW 160th St.

NOTE

2, Deed restricted to prohibit hunting.

Offering subject to errors, omission, prior sale or withdrawal without notice.

— Commercial Real Estate Investments | Management | Brokerage | Development | Land

Maury L. Carter & Associates, Inc.

407-422-3144 | www.maurycarter.com

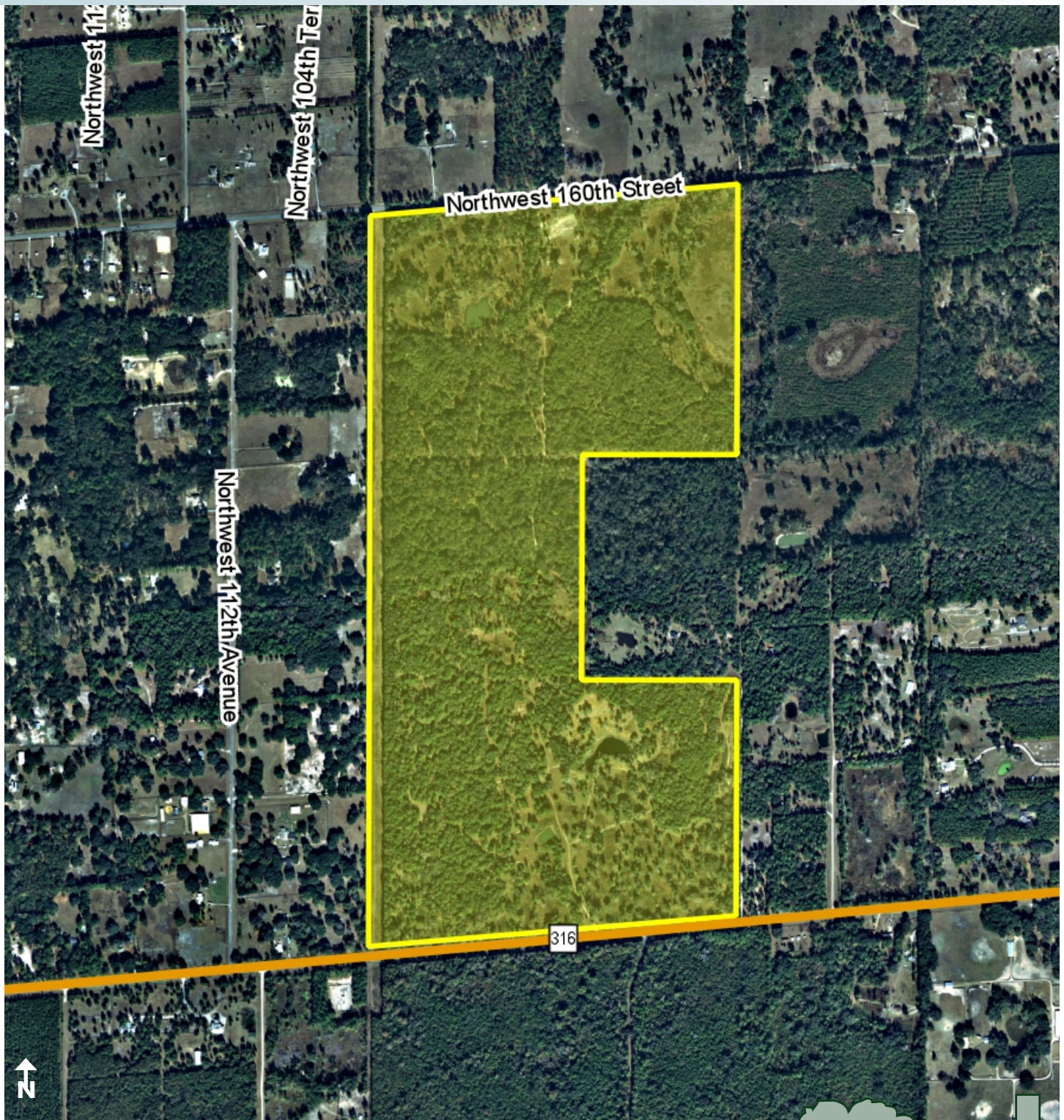


AGRICULTURAL LAND ON CR 316

275± acres

Marion County, FL

**MAJOR PRICE
REDUCTION**



PROPERTY MAP

— Commercial Real Estate Investments | Management | Brokerage | Development | Land

Maury L. Carter & Associates, Inc.
407-422-3144 | www.maurycarter.com

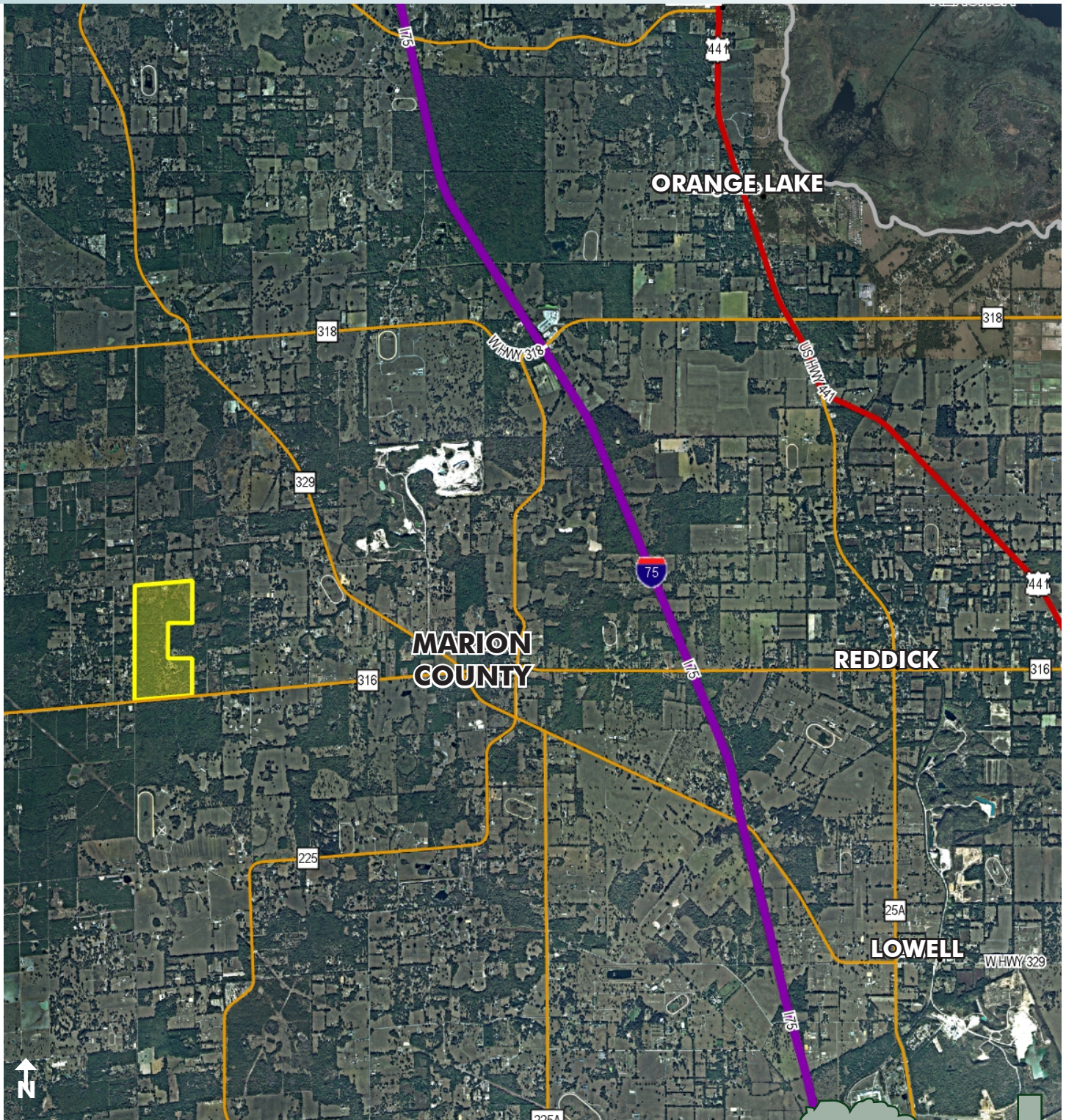


AGRICULTURAL LAND ON CR 316

275± acres

Marion County, FL

**MAJOR PRICE
REDUCTION**



REGIONAL MAP

— Commercial Real Estate Investments | Management | Brokerage | Development | Land —

Maury L. Carter & Associates, Inc.

407-422-3144 | www.maurycarter.com

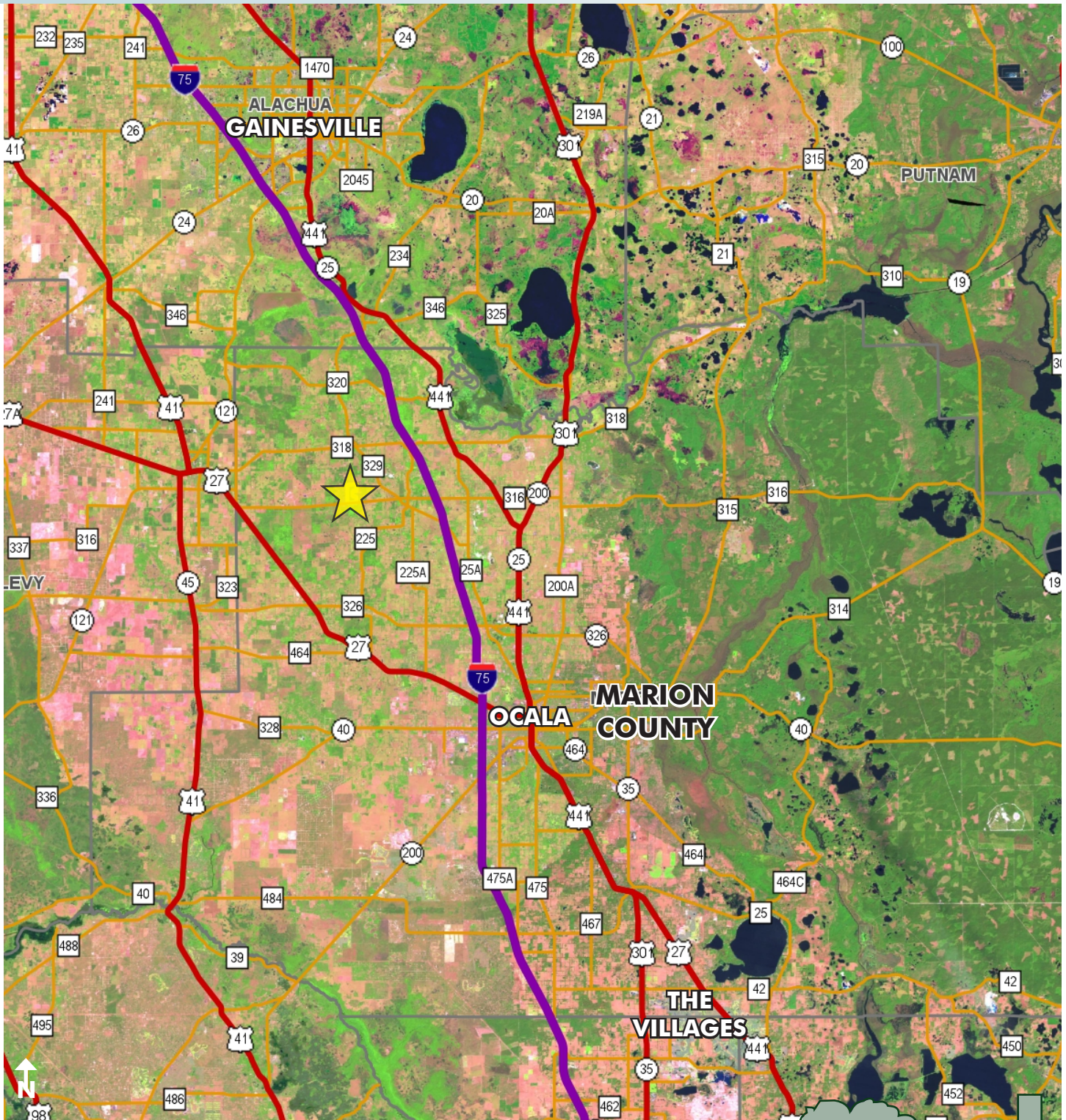


AGRICULTURAL LAND ON CR 316

275± acres

Marion County, FL

**MAJOR PRICE
REDUCTION**



LOCATION MAP

— Commercial Real Estate Investments | Management | Brokerage | Development | Land

Maury L. Carter & Associates, Inc.
407-422-3144 | www.maurycarter.com



